

# Exhibitors Asked To Get Ready For Fair

PHILADELPHIA — "Be a winner in the 1998 Pennsylvania Fair home grown and home made competition," urges Beverly Gruber, CFE, chairman of the competitive exhibits for the upcoming fair to be held at the Philadelphia Park Race Track on May 14 - 25.


Potential exhibitors may enter their creative work in a wide variety of classes outlined in the 1998 exhibitors handbook. All home grown and homemade products produced by the exhibitors are welcome at the fair. Categories of entries include home baked products, canned products, needlecraft, arts, crafts and photography, hay and grain, vegetables, nut, fruits and berries, Christmas trees, floral exhibits, as well as homemade wine. The 68-page guide lists possible cash prizes and rules for entry, display and removal of exhibits. First, second and third place cash prizes as well as ribbons will be awarded to each class. A "Best of Show" ribbon will also be given in each general category. For your official 1998 exhibitors guide, write to P.O. Box 5, New Tripoli, PA 18066 or call 610-767-5026.

Entrants are reminded that they can enter only one item in each class, and are encouraged to pre-enter their items to avoid the last minute rush. By submitting your entries ahead of time, the processing becomes quicker and easier for both participants and the Fair officials, but it is not mandatory. Actual entries must be brought to the Philadelphia Park Race Track building on Wednesday, May 13 between the hours of 1 and 7.

Four special classes will also be held in conjunction with the Pennsylvania Fair. Nearly \$1,600 in premiums will be paid out in the "Blue Ribbon Apple Pie Contest," the "Land O Lakes Butter Best Cookie Contest," the "Cheesecake Contest" and the "Decorated Wreath Contest."

(Turn to Page A41)

**INTRODUCING**  
More Power. More Features.  
More Performance.



Compare the new 2900 Series Commercial Garden Tractor vs John Deere, Cub Cadet and Kubota

www.masseyjohn.com  
MASSEY FERGUSON  
LAWN & GARDEN EQUIPMENT

**Lawn Care Equipment**  
Center, LLP  
Martindale, PA  
(717) 445-4541

# Alpaca Jubilee Scheduled In New Jersey

AUGUSTA, N.Y. —What comes in 22 different colors, produces one of the world's finest fleeces, and hums? You'll find the answers to these questions at the second annual Alpaca Jubilee, being held Saturday and Sunday, April 18 & 19, at the Sussex County Fairgrounds in Augusta, N.J. Almost 200 alpacas will be on display, brought by breeders from 14 states.

Alpacas, and their cousins, the llama, have been domesticated for over 5,000 years in South America. Yet the alpaca has only been in the United States since 1984. These animals produce a fine cashmere-like fleece, once reserved for Inca royalty. Alpacas have a loveable disposition and are gentle enough to be handled by children. They communicate with each other through body posture, tail and ear movements, and a soft, humming sound.

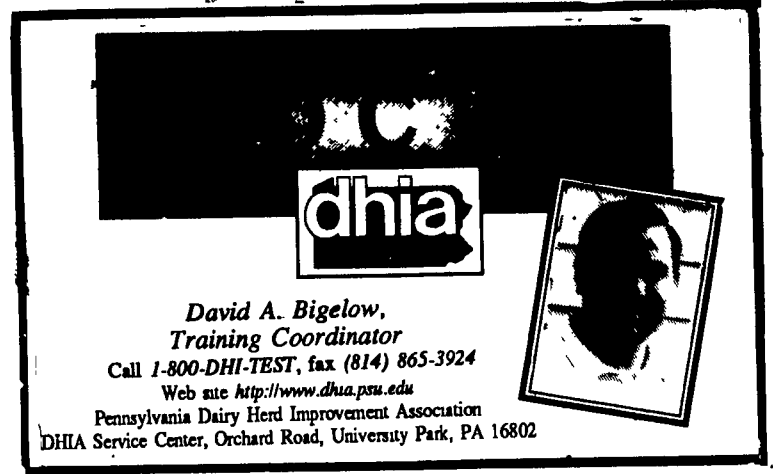
The Jubilee provides an opportunity to see both the suri and huacaya breeds of alpacas, and learn more about them at the many free seminars being offered to the public. Topics include uses of alpaca fiber, barn and pasture requirements, start-up strategies and showmanship classes. There will be hands-on demonstrations of spinning and weaving, as well as fleece shearing. Fleece judg-

ing will take place on Saturday, April 18. The Performance Classes will also occur on that day. These consist of obstacle courses, which require the alpacas to maneuver bridges, ramps and jumps. In the Youth Class, the alpaca handlers must be 18 years of age or under. It's a joy to see how the children interact with their animals and are able to lead them through the various obstacles.

A highlight for the breeders, as well as the public, will be the Halter Class Show held on Sunday, April 19, from 9:00 to 4:00. Ribbons will be awarded to the highest placing alpacas in classes divided by breed, age and color. A number of free seminars are also being offered on Sunday.

Both days you will have the opportunity to see the alpacas and talk to the breeders, who will be more than happy to tell you about the pleasures of raising alpacas and answer your questions. Many breeders will also have animals for sale. Bring your checkbook. Alpaca prices range from \$10,000 to over \$40,000.

Admission to the Fairgrounds is free, as is parking. Food will be available and vendors will be on the Fairgrounds with various alpaca-related products. Hours are 9:00-5:00 on both Saturday and Sunday. Plan



**dhia**

David A. Bigelow,  
Training Coordinator  
Call 1-800-DHI-TEST, fax (814) 865-3924  
Web site <http://www.dhia.psu.edu>  
Pennsylvania Dairy Herd Improvement Association  
DHIA Service Center, Orchard Road, University Park, PA 16802

## Average Farm Feed Costs For Handy Reference

To help farmers across the state to have handy reference of commodity input costs in their feeding operations for DHIA record sheets or to develop livestock feed cost data, here's last week's average costs of various ingredients as compiled from regional reports across the state of Pennsylvania.

Remember, these are averages, so you will need to adjust your figures up or down according to your location and the quality of your crop.

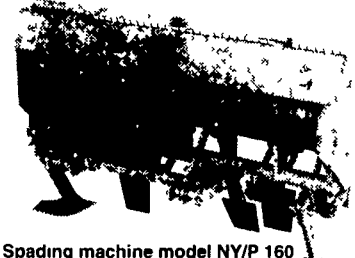
Corn, No.2y — 2.70 bu., 4.82 cwt.
Wheat, No. 2 — 3.03 bu., 5.06 cwt.
Barley, No. 3 — 2.24 bu., 4.78 cwt.
Oats, No. 2 — 1.70 bu., 5.29 cwt.
Soybeans, No. 1 — 6.24 bu., 10.42 cwt.
Ear Corn — 86.32 ton, 4.32 cwt.
Alfalfa Hay — 164.50 ton, 8.23 cwt.
Mixed Hay — 148.00 ton, 7.4 cwt.
Timothy Hay — 134.25 ton, 6.71 cwt.

a trip to the Eastern Alpaca Jubilee and bring the family, but leave your pets at home as they are not allowed on the Fairgrounds. The Jubilee is wonderful way to spend a Spring

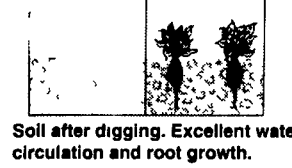
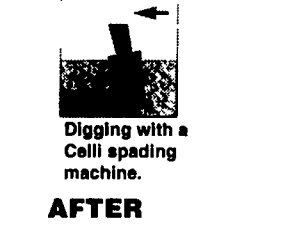
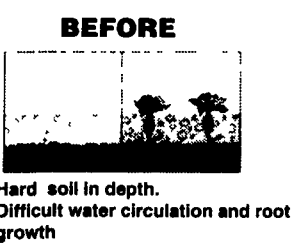
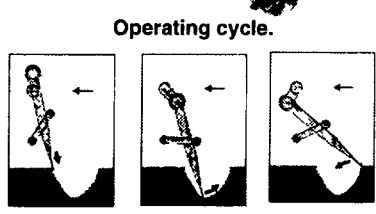
day. When you leave you'll understand why alpacas are known as "The Treasure of the Andes," and why they are ideal investment animals for small Eastern farms.

## CELLI SPADE CULTIVATORS

Spade Cultivators Are An Innovative Alternative To Conventional Plowing They Work On The Principle Of A PTO Driven Crankshaft Connected To Steel Spades Which Vertically Penetrate The Soil One At A Time The Operation Is Very Similar To A Person Digging With A Spade Shovel



- ADVANTAGES:**
- Low HP Requirement Compared to Mold Board Plows
  - Greatly Reduced Compaction And Eliminates Creation Of Plow Pan
  - Allows For Working Wetter Ground For Earlier Preparation
  - Works Equally Well In Hard, Dry Conditions
  - Produces Small, Porous Clods For Better Water Absorption
  - Ideal for Incorporating Compost, Crop Residue & Fertilizer At Proper Depths
  - Leaves Topsoil On Top And Does Not Bring Sour Subsoil Or Rocks To Surface
  - Will Fracture Hard Pan Left By Conventional Tillage



- FEATURES:**
- Machines Available For Tractors For 20 to 190 HP
  - Tillage Widths From 32" to 144"
  - Depths Up To 16"
  - Top Quality Components For Long Life In Hostile Conditions
  - Over 8000 Machines Sold Worldwide

For More Information Please Contact:

**ASK US ABOUT  
EZ FLEX FINANCING**

**CUMMINGS and BRICKER, Inc.**  
WHOLESALE DISTRIBUTORS

100 Stover Drive  
Carlisle, PA 17013  
717/249-6720

100-120 Lehigh Ave - P.O. Box 928  
Batavia, New York 14021-0928  
716/343-5411

**1-800-222-8969**      **1-800-252-1552**

Serving Farmers Through Farm Equipment Dealers Since 1961



I Love John Deere

Old Mac Wilmer Had a Farm

And on that farm he had a

JOHN DEERE

Lapp's Family Restaurants Sponsor:

# JOHN DEERE BREAKFAST

Drive A John Deere Tractor, Combine, Lawn Tractor, Bike, Pedal Tractor !  
To Our Restaurants And Get  
**50% OFF BREAKFAST**  
**SATURDAY, MAY 2 - 7 AM - 9 AM**  
Please - No Manure Spreaders!  
John Deere Toys, Shirts, Suspenders  
For Sale

**Lapp's**  
FAMILY RESTAURANTS

1525 Manheim Pike  
Lancaster, PA 717-560-9302

2270 Lincoln Highway East  
Lancaster, PA 717-394-1606