

Reading = 4 Alfalfa in the 60 percent to 80 percent range. These stands should produce normal yields. Yet, when grazing, the holes in the stand should be filled with grass to prevent weed and wild grass invasion. This will also help considerably with treading quality.

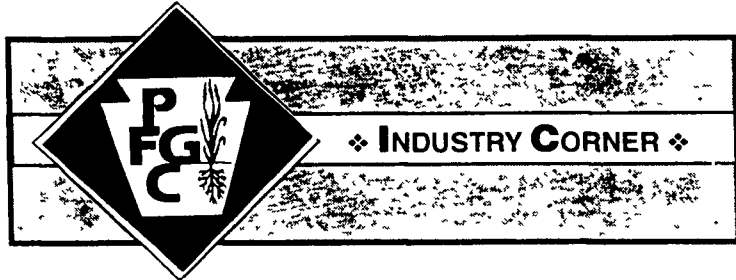


Reading = 5 Stands of 80 percent to 100 percent. This terrific stand is what we all strive for, especially as the stands age. The only production restrictions here are soil quality, fertility, weather, variety potential, harvest systems, and sufficient moisture during the production season.

Note: Autumn and real early spring are the best times in most sections of the country for over-

(Turn to Page 23)

uation system allows you to spot problems before they become paramount and to develop strategies to deal with them.



(Continued from Page 21)

have adequately covered the field, average the number of your readings and multiply by 20. That's your percent stand!

With practice, this visual evaluation system can become both reliable and practical. Alfalfa is so important to all growers, it just makes good sense to make frequent walks through all fields. This eval-



CR Rotary Tedder Rake

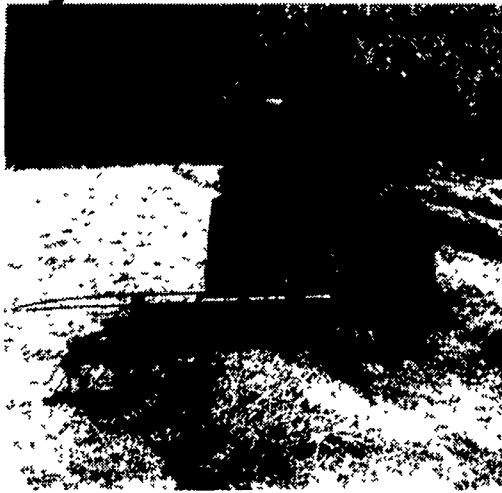
100% good clean raking

The CR Rotary Tedder Rake provides effective windrowing of two swaths up to 7'. It also windrows spread crop into one well-shaped and stable swath.

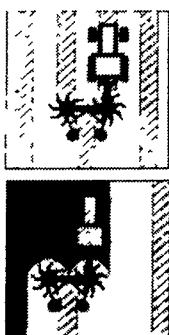
Unique swath rollers

JF's patented swath rollers form a perfect swath for baler or forage harvesters.

Adjusting from spreading to ranking is quick & easy - simply change the position of the rake tines by using a spring loaded pin.



Working width, raking	9'10"
Working width, spreading	10'6"
Transport width	8'10"
Working speed, max.	10 MPH
Power consumption	16 HP
Weight	715 lbs.
Tire Dimension	400x8-4
Number of rake tines	2x8



Sold and Serviced By The Following J-F Dealers

BINKLEY & HURST BROTHERS
Lititz, PA
717-626-4705

CARLISLE FARM SERVICE
Carlisle, PA
717-243-4419

CARLYLE & ANDERSON, INC.
Hamilton, VA
540-338-4177

CARLYLE & ANDERSON, INC.
Winchester, VA
540-722-6638

CARLYLE & MARTIN, INC.
Hagerstown, MD
301-733-1873

CHAMBERSBURG FARM SERVICE
Chambersburg, PA
717-264-3533

GLADHILL BROTHERS
Damascus, MD
301-253-2141

GEORGE N. GROSS, INC.
Dover, PA
717-292-1673

GRUMELLI FARM SERVICE
Quarryville, PA
717-786-7318

PIKEVILLE EQUIPMENT, INC.
Oley, PA
610-987-6277

D.W. OGG EQUIPMENT CO.
Frederick, MD
301-473-4250

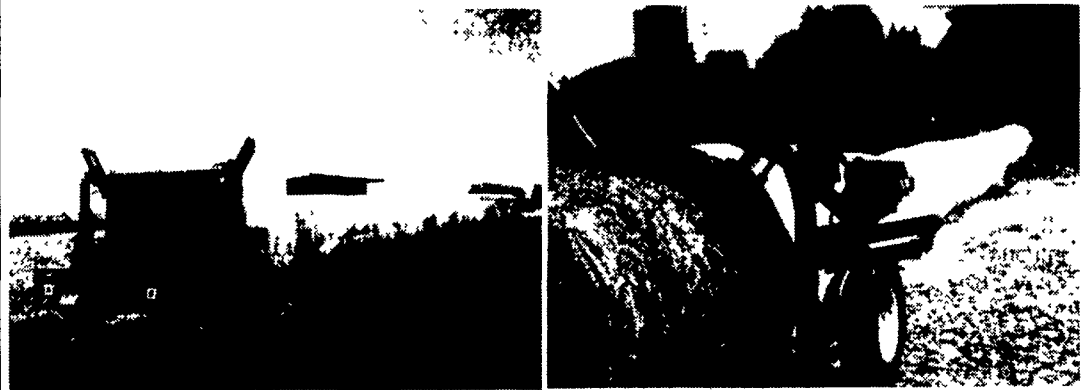
D.W. OGG EQUIPMENT CO.
Westminster, MD
410-848-4585

TOBIAS EQUIPMENT CO.
Halifax, PA
717-362-3132

WERTZ FARM EQUIPMENT
Glen Rock, PA
717-235-0111

HAY STORAGE SOLUTIONS

OG-BAG FLEX-A-TUBER™



SQUARE BALE TUBER

ROUND BALE TUBER

- FASTER THAN WRAPPING
- 1 MAN OPERATION
- HEAVIER PLASTIC THAN WRAP
- HIGH MOISTURE STORAGE

- MOTORIZED MACHINES
- REMOTE CONTROL
- EXCELLENT FOR DRY STORAGE
- CALL FOR CUSTOM RATES

INTERSTATE DAIRY EQUIPMENT

THURMONT, MD

1-800-332-6559 301-271-7344

Now Serving Western MD. Call John Sines 301-387-6980

SPECIALIZING IN CUSTOM MANUFACTURED AGRICULTURAL EQUIPMENT



MODEL 55/55-N

The Model 55 is the most versatile of all models matching up to a wide variety of bale patterns. It can carry up to 12 two tie bales, 8 three tie or 3 midsize bales at one time. It can also be connected to a 90 degree rotator, a powered vertical tilt, or any of a variety of loader units.

Innovative Hay Handling Solutions For Today's Hay Producers.



MODEL 200/400

The model 200 is a highly maneuverable vehicle built from the ground up specifically for handling hay. It can be mated with all bale rack models to handle all sizes of square bales, large or small. Its extremely rugged design easily handles up to 2000 lbs. to 21' high or in the Model 400 version 4000 lbs. up to 25' high.



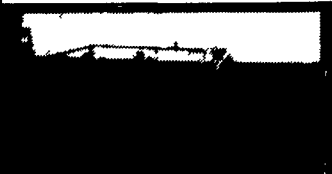
MODEL 65/65-N

The Model 65 is specifically built to match up with all New Holland 3 bale wide stack wagons. It can carry 12, 15 or 18 bales flat or on edge depending on model. It is ideal for topping stacks or loading and unloading trucks.



MODEL 84/85

These models are extra heavy duty for the demanding application of carrying up to 2 big bales or 3 midsize bales at a time. They have additional bearings and extra large teeth that dig deep into the bales to insure a firm grip even with soft or wet tops.



MODEL N/950

The model 950 is specifically made for packaging 10 bales together to form a tie package measuring approximately 6'-1/2 x 8' ready to load directly onto a truck. This completely eliminates the need for someone to turn bales on the truck to get a full load. Also, it eliminates the need to hand stack at the barn. This is truly the only system that eliminates all hand labor.

STEFFEN SYSTEMS

HAY HANDLING EQUIPMENT

8045 STATE STREET • SALEM, OREGON 97301 • (503) 399-9941

FAX (503) 371-4779 • TOLL FREE 1-888-STEFFEN (783-3336)

E-MAIL hayman@steffensystems.com

www.steffensystems.com

FOR MORE INFORMATION CALL OR WRITE:

DAVID O. FINK
Germansville, PA 18053
610-767-1408
Fax 610-767-1312

- Harvest Tech Equip.
- Twine
- Drying Agents
- Plastic Bale Wrap
- Preservatives