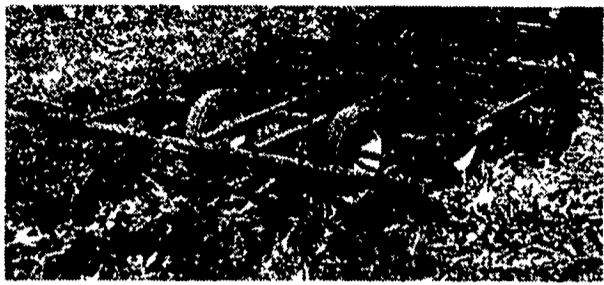


Brillion

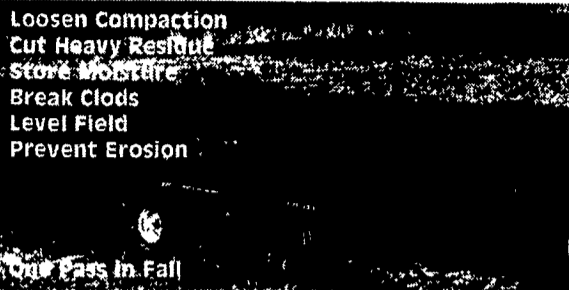
The "Quality Crafted" Line Better Seedbeds... Better Stands!

SOIL BUILDERS 5-7-9-11-13 Shanks



SOIL BUILDERS. Optional - Coulter gang can be hydraulically controlled to save maintenance dollars. Available in 2 & 3 bar.

BRILLION COMMANDER SYSTEM



Loosen Compaction
Cut Heavy Residue
Store Moisture
Break Clods
Level Field
Prevent Erosion

One Pass in Fall

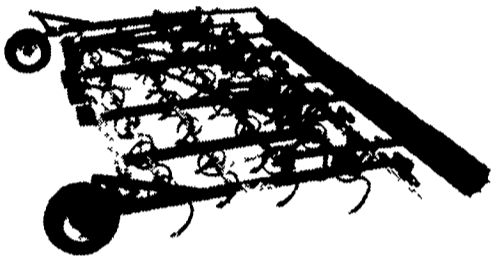
Versatile tillage tools such as Brillion's Soil Commander allows the use of Chisel Shanks or Deep-ripper. Shanks to break up soil compaction Front disk gangs and optional rear leveling disks cut residue, breaks clods, level the field and prepare the field to absorb moisture from melting snow and to reduce soil erosion Brillion's Field Commander combined with a Brillion Pulverizer excels at creating the perfect seedbed for spring planting C-Shanks or S-Tine Shanks leave a uniform mixture of soil and surface residue for the most efficient chemical incorporation The X-Fold Pulverizer (shown below) breaks up clods; firms the soil without compacting, eliminates air pockets in the soil and levels the soil for optimal seed placement For less time in the field and better yields, go Brillion.

AG SURE STAND SEEDERS 5 Ft.-8 Ft.-10 Ft.-12 Ft.

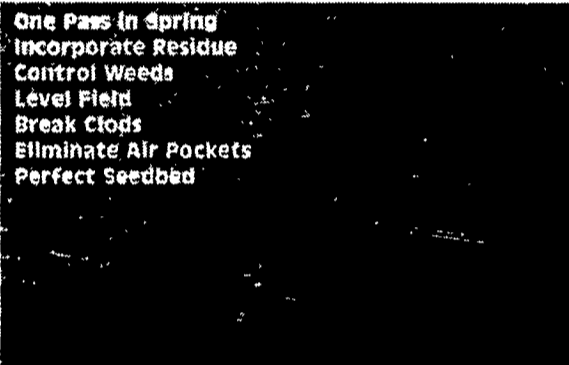


For years Brillion Grass Seeders have proven to be the best machine for planting grasses and legumes... and now they're even better! Larger, heavier boxes, high seeding rates, nylon lined seed meter, heavier frame, new drive system and more. Available in 3-point or pull type. SSPT604, SS8, SS10, SS12

3 PT. BASKET HARROWS 12 Ft., 15 Ft., 18 Ft.



Brillion has designed a 3 pt. S-Tine field cultivator with a larger, aggressively angled 12" diameter rolling basket, a 4-bar frame that allows for either 4" or 6" tooth spacing and an adjustable coil tine leveler bar. Gauge wheels are optional.



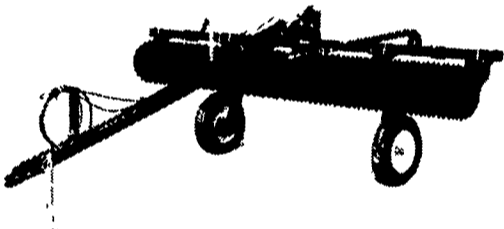
One Pass in Spring
Incorporate Residue
Control Weeds
Level Field
Break Clods
Eliminate Air Pockets
Perfect Seedbed

LANDCOMMANDERS 3-5-7-9-11-13 Shanks



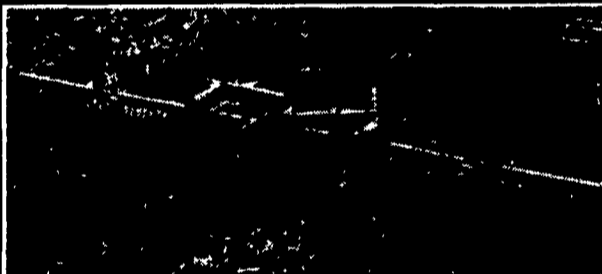
The front disc gang has 22" x 1/4" disc blades on 15" spacings. They are designed to cut residue and work the ground to a depth of 6". The Landcommander has the ability to till from 8" to 20" deep. The rear disc gang has 20" x 7 ga. disc blades on 7.5 spacing. The 6"x4" mainframe is designed to handle the stress from the deep till shanks and disc gangs.

P-SERIES TRANSPORT PULVERIZERS 10 Ft. to 20 Ft.



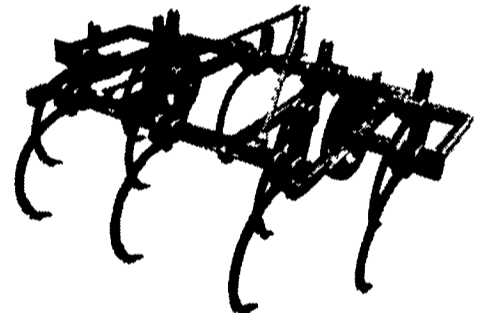
Rotary Frame Pulverizers; PT10 Series Transport Concept. Machine weight is hydraulically rotated over the wheels for transport. This reduces draw bar hitch weight considerably and provides ample clearance for transport. Also Available As Pull Type.

X-FOLD PULVERIZERS 19 Ft. to 46 Ft.



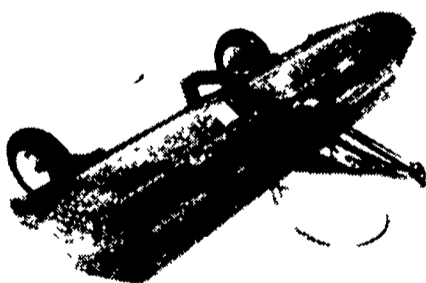
The X-Fold pulverizers are designed to meet the needs of today's larger acreage farmers...and Brillion offers them in two models and 11 sizes from 19' through 46'. Available with 20" Ductile Rollers.

2 or 3 BAR CHISEL PLOWS 5-7-9-11 or 10-12-14-16 Shanks



The CPP series of mounted models enables you to turn short and fast... to transport easily, utilizing your tractor's hydraulic system.

FLAIL SHREDDERS 12 Ft. and 15 Ft.



FLAIL SHREDDERS Heaviest gearbox on the market eliminates the number one cause of downtime. Available in 12' and 15'. Either cup or side slicer knives. 540 or 1000 RPM.

ML SERIES PULVI-MULCHERS 12'6", 13'10", 15'2", 18'9"



- Easy rolling 20" ductile iron notched or crowfoot roller wheels with 5 year limited warranty.
- Longer life external mounted bearings.
- Longer, heavier drawbar for shorter turns.

COMPACTION COMMANDERS NO-TILL RIPPER/DEEP RIPPER - 3-5-7 Shanks

Brillion introduces their new Compaction Commander designed to break up hardpan and compaction as deep as 20"



The standard V-shaped alloy point and wear strip leaves residue on the surface with minimal soil disturbance. Auto-rest shanks with 20" of trip height allows for non-stop tillage. Parabolic shanks lift and fracture the soil 39" of underframe clearance assures trouble free operation even in heavy residue.

FOR MORE INFORMATION... CONTACT YOUR BRILLION DEALER

PENNSYLVANIA

- ADAMSTOWN
Adamstown Equip. Inc.
- ALLENTOWN
Lehigh Ag Equipment
- BECHTELSVILLE
Miller Equip. Co.
- CARLISLE
Gutshalls Inc.

- CENTRE HALL
Dunkle & Grieb, Inc.
- CRESSON & BELLWOOD
Hines Equipment, Inc.
- DOVER
George N. Gross, Inc.
- EASTON
Geo. V. Seiple
- ELIZABETHTOWN
Messick Farm Equipment Co.
- INTERCOURSE
C.B. Hooper & Son

- GREENCASTLE
Meiers Implement
- GREENSBURG
J&M Machinery Inc.
- LEBANON
Umberger's of Fontana
- LOYSVILLE
Gutshalls Inc.
- OAKLAND MILLS
Peoples Sales & Service
- OLEY
Pikeville Equipment, Inc.

- QUARRYVILLE
Grumelli Farm Service
- TAMAQUA
Charles Snyder, Inc.
- WATSONTOWN
Deerfield Ag & Turf Center, Inc.
- MARYLAND**
RISING SUN
Ag Industrial Equipment

NEW JERSEY

- BRIDGETON
Leslie Fogg
- ELMER
Pole Tavern Equip. Sales Corp

VIRGINIA

- HARRISONBURG
Rockingham New Holland, Inc.

