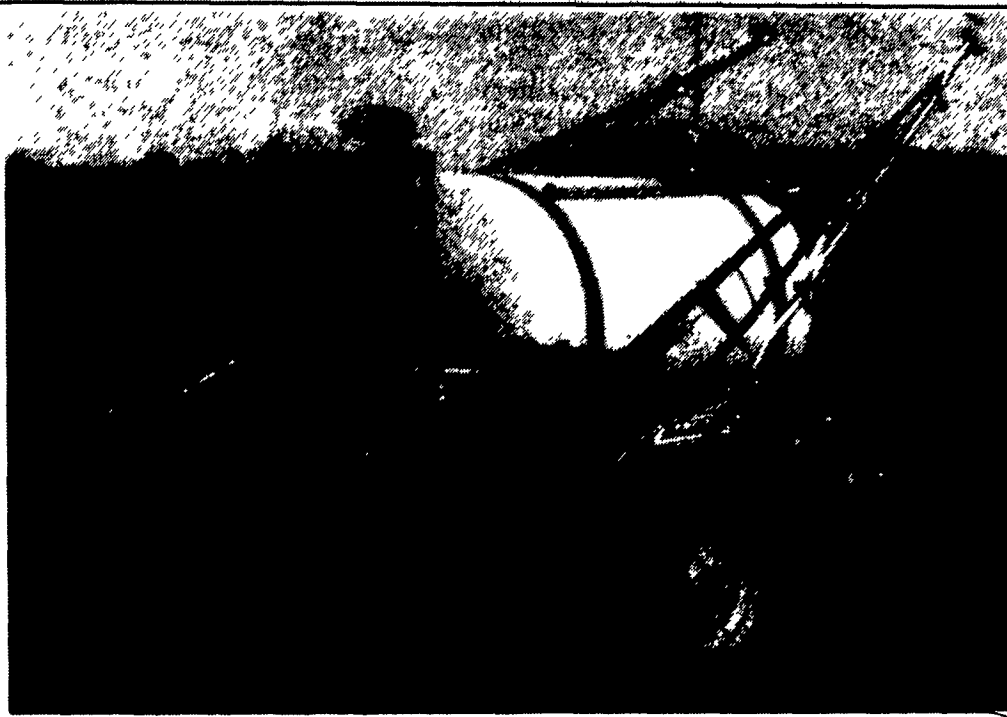




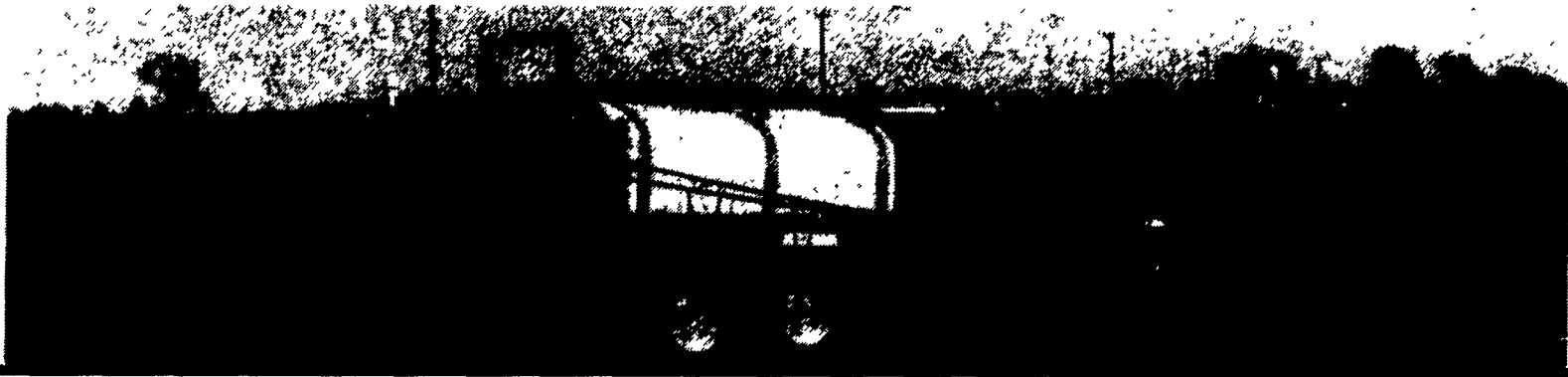
# OPERATING EQUIPMENT



## 200, 300, 500 and 750 GALLONS TRAILER SPRAYERS

### Features on Trailer-Type Sprayer

- All Welded Steel Main Frame
- Poly Tank
- Adj. Boom Height
- Hitch Jack
- Adjustable Width Wheel Spacing
- High Crop Clearance
- Booms 30', 35' & 40' Manual, Fold; 30', 45' & 60' Hyd. Fold
- Low Overall Height
- Teejet Computerized Spray Controls
- Selector Valve
- Chemical Injection System
- Tank Rinsing System



# RAVEN

## POLY TANKS

25 To 3100 Gal. Vertical and Horizontal

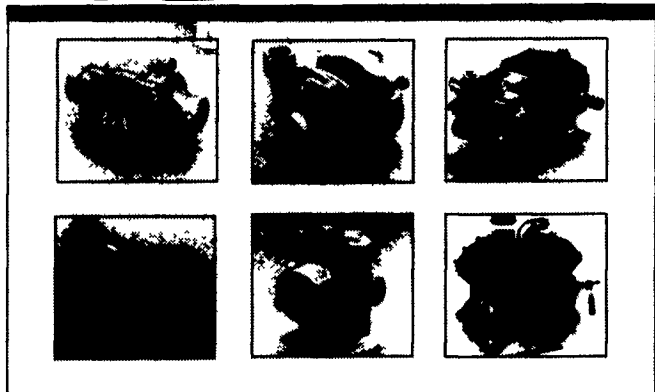


We Stock a Complete Line of

# TeeJet

 Spraying Systems Co.

# Hypro PUMPS

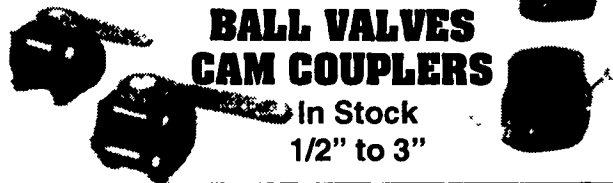


**The Long Blue Line** For roller pumps, centrifugal pumps, diaphragm pumps, piston pumps and plunger pumps, no one offers you more quality choices than Hypro. More types. More models. And most of all, more quality and dependability. For virtually any spraying, fluid handling or pressure cleaning need you have, depend on *The Long Blue Line*™ for genuine value. Genuine Hypro pumps from your quality Hypro dealer.

## NORWESCO

### BALL VALVES CAM COUPLERS

In Stock 1/2" to 3"



## SHURflo

### DIAPHRAGM DEMAND PUMP



Pick up logo

## Self-Priming Centrifugal Pumps For Agriculture

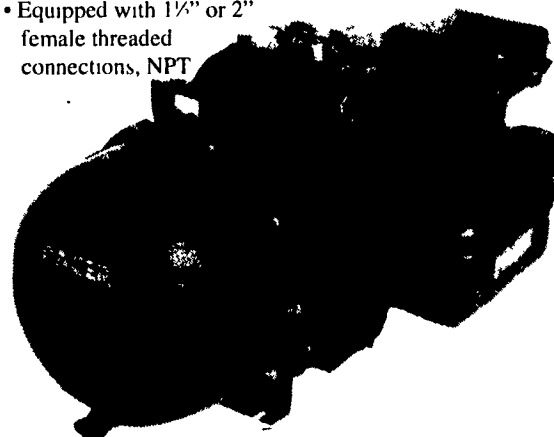
### 'S' Series 3 HP

#### Features:

- Self-priming to 20 feet (6.1 meters)
- Total heads to 120 feet (24.4 meters)
- Capacities to 200 U.S. GPM (628 liters per minute)

### 'S' Series 5 HP

- Built in check valve
- Equipped with 1 1/2" or 2" female threaded connections, NPT



**HOURS:**  
 Mon., Thurs., Fri.  
 7-8:30  
 Tues., Wed. 7-5:30  
 Sat. 7-4:00

# PAUL B. ZIMMERMAN, INC.

Manufacturers - Distributors

50 Woodcorner Rd., Lititz, PA 17543 (717) 738-7350