

OVER 60 YEARS IN BUSINESS!

# WOLF MOTOR CO.

ROUTES 72 & 283, LANCASTER, PA 17601

**CENTRAL PA'S**

**FORD TRUCK DEALER**

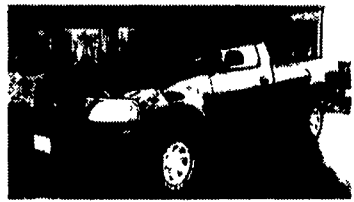
Sales Reps: Charlie Burke, Gary Breneman, Dennis Asel, Mgr.

717-299-4331

Toll Free 800-637-6612



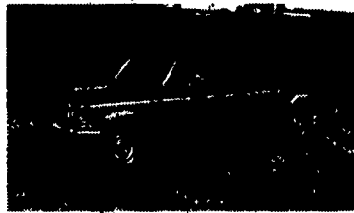
**98 FORD ECONOLINE CARGO VANS**  
E150's, 250's & 350's



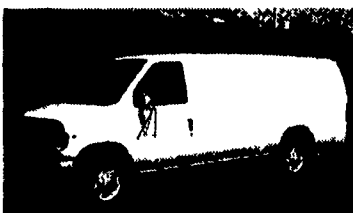
**1997 FORD '97 LEFTOVER F250 4x4**  
5 4 L V-8, Auto, AC, AM-FM, Trailer Towing Pkg.  
**\$20,835**



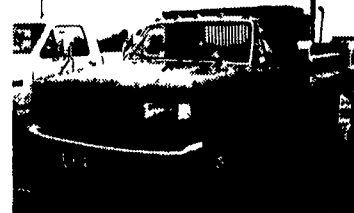
**1989 FORD SUPER DUTY F-450**  
460 V-8, 9' Flat Bed, 5 Speed, 60,000 Miles  
**\$9,900**



**1997 FORD E350 EXT. CARGO VAN**  
V-10, Auto, AC, AM-FM, Only 17,000 Miles  
**\$19,700**



**1989 FORD F250 SUPER CAB**  
XLT Package, 7.3 L Diesel, Auto., 97,000 Miles  
**\$9,800**



**1997 FORD F350**  
w/8' Dump Body, 11,000 GVW, Power Stroke Diesel, Auto  
**\$25,600**

Lancaster Farming, Saturday, April 18, 1998-D39

Tandem axle spreader truck, garage kept since new, 54,000 GVW, 15R22.5 floater tires on front, 18R22.5 Super single floaters on rear, tires new, 1974 Ford w/13 speed, 24,000 miles, 2600 gallon sludge tank truck, nice condition, runs good  
**\$6,500**  
York County  
(717) 382-4881

**WANTED:**  
89-93 Dodge D350 Dually's Cummin Diesel, 5 Spd, A/C, Radio, Prefer With Towing Package.  
**ALSO:** Need Transmissions For The Above Trucks.  
**CALL 540-877-2121**

4294 E. HARRISBURG PIKE  
DEPARTMENT LF CATALOG  
MIDDLETOWN, PA 17057  
(717) 944-0318  
Route 230 Between  
Elizabethtown & Middletown

**SAND BLASTERS & BLAST CABINETS**

**NEW GAS TANKS,**

**NEW RADIATORS**

**SAVE \$\$\$**

**FREE CATALOG CALL OR WRITE NOW!!**

**MOST CLASS III HITCHES**  
**\$79<sup>99</sup> to \$89<sup>99</sup>**

**AUTOBODY PARTS, PAINTS & SUPPLIES**

**BUILD OR REPAIR YOUR TRAILER. WE HAVE PARTS.**

**TOOLS AND EQUIPMENT**

**USED 4x4's Pickup's, Bronco's & Blazer - Call For Our Low Prices**

**NEW UTILITY TRAILERS**  
3,000 GVW, Extra Heavy Frames w/Treated Lumber Deck, Lights, Chains, Etc Included!!!  
5'x10' Deck.....**\$750**  
6'4"x12' Deck.....**\$875**  
Add-On Landscape Ramp/Gate.....**\$145**

**WE BUILD OUR OWN TRAILERS**

**"NEW" 16' Deck Car Hauler**  
Has Two 24" Wide Diamond Steel Runners Tube Steel Frame, 4-Wheel Brakes Safety Breakaway Kit & Full Lighting Beavertail & Ramps Removable Left Fender & More For **\$1,750**

**Hours: Tues.-Fri. 9 AM - 6 PM Saturday 9 AM - 2 PM Closed: Sunday & Monday**

# JONES BEST BUY 4X4'S TRUCKS

Largest Stocking & Selling Extended Cab GMC Dealer in 7 States

**PONTIAC • HONDA GMC TRUCK**  
1335 Manheim Pike, Lancaster  
Prices based on straight sale, Tax & Tags extra. Trades accepted at actual cash value. Must present this ad at time of purchase for sale price.

**JONES**  
**717-394-0711**

<p><b>'94 TOYOTA 4x4</b> 5spd, 4cyl, 43K Miles #7748 Was \$13,900 <b>SALE \$10,880</b></p>	<p><b>'95 GMC C25 SUBURBAN</b> Diesel, 6.5 Turbo, AT, AC, SLE, #7870 Was \$26,400 <b>SALE \$23,750</b></p>	<p><b>'94 FORD F150 4X4</b> AT, AC, 4.9L, Clean #7869 Was \$11,400 <b>SALE \$9,750</b></p>	<p><b>'95 CHEV K25 XCAB 4X4</b> 8600 GVW, Silverado, AT, AC, 350 #7793 Was \$19,900 <b>SALE \$17,400</b></p>	<p><b>'95 CHEV 12 PASS. VAN BEAUVILLE</b> AT, AC, 350, 30K Miles, #7813, Was 19,900 <b>SALE \$17,700</b></p>
<p><b>'93 GMC C3500</b> 6.5 Turbo, AT, AC, SLE, 38,000 Miles #7772 Was \$19,100 <b>SALE \$16,930</b></p>	<p><b>'90 GMC K JIMMY</b> 350, AT, AC, SLX #7867 Was \$9,900 <b>SALE \$7,800</b></p>	<p><b>'97 GMC C15 XCAB</b> AT, AC, V8 8' Bed, Black #7855 Was \$18,100 <b>SALE \$16,100</b></p>	<p><b>'91 FORD RANGER 4X4</b> Auto, AC, V6 #7862 Was \$9,000 <b>SALE \$7,850</b></p>	<p><b>'97 GMC K15 4x4</b> V8, AT, AC, 6' Bed, 7K Miles #7764 Was \$20,750 <b>SALE \$18,100</b></p>
<p><b>'95 TOYOTA 4 RUNNER</b> 4X4 SE, V6, AT, Air, 25K Miles #7787 Was \$25,800 <b>SALE \$21,970</b></p>	<p><b>'94 GMC SUBURBAN 4X4</b> Starcraft Conv, AT, AC, V8, 40K Miles #7786 Was \$26,500 <b>SALE \$22,800</b></p>	<p><b>'93 GMC K25 XCAB 4X4</b> AT, AC, 350, 8' Bed #7822 Was \$15,900 <b>SALE \$12,550</b></p>	<p><b>'94 OLDS BRAVADA</b> AWD, AT, AC, V6, Loaded #7784 Was \$17,700 <b>SALE \$14,800</b></p>	<p><b>'94 CHEV K15 CAB 4X4</b> AT, AC, 350, Silverado, 38K Miles #7783 Was \$21,400 <b>SALE \$18,700</b></p>
<p><b>'98 GMC CREW CAB 4x4</b> 6.5 Turbo, SLE, 10,000 GVW, Loaded, 10K Miles, #19999, Was \$38,400 <b>SALE \$34,480</b></p>	<p><b>'97 GMC 14' CUBE VAN</b> AT, AC, 350, Ramp #7817 Was \$22,800 <b>SALE \$19,700</b></p>	<p><b>'95 GMC YUKON 4X4</b> AC, AT, V8, SLE #7775 Was \$24,995 <b>SALE \$22,350</b></p>	<p><b>'91 CHEVY S10</b> V6, 5 Spd., AC #7851 Was \$5,900 <b>SALE \$3,850</b></p>	<p><b>'94 FORD F150 4X4</b> XLT, AT, AC, V8, 34K Miles #7771 Was \$18,700 <b>SALE \$14,300</b></p>