

PUBLIC AUCTION

The Bliley's Are Retiring From Farming And After 48 Years Are Selling Their High Quality Registered Dairy And Excellent Line of Farm Equipment. Located 3 Miles South of Waterford, PA or 5 Miles North of Union City, PA on Rt. 97, 1/2 Mile North of Rt. 97 on Union Road. Watch For Signs.

SAT., APRIL 18th, 1998 10 A.M.

54 HEAD OF REGISTERED DAIRY CATTLE

35 Adult Dairy Cows, 3 Bred Heifers, 6 Yearlings Ready To Breed, 10 Heifers (4-10 Mos. Old). Sires Include: Duster, Jordache, Imprint, Mark Pappy, Fancy Paul, Nittany, Spacey, Langs, Darkstar, Mica and Emery. This Herd Is Certified And Accredited. Artificial For 48 Years. GMS Mating With ABS Breeding. Tested For Interstate And Inoculated. **Dairy Selling At Approximately 1:00 PM.**

EQUIPMENT - Ford 6710 Diesel (Roll Bar - 1888 Hrs.), Ford 6600 Diesel (Factory Cab - 6500 Hrs.), Farmall Super MTA (WFE), Farmall Super "C"/Hi-Lift, White 3242 3PH 16" Plows, Oliver 360 4x16 3 PH Plows, 10' Pull Type Disc, IH 401 3-Section Drag, Dunham 10' Cultimulcher, IHC 510 Grain Drill (13 Run-Dry Fert.), IHC 449A 4-row Corn Planter, JD 1327 Discbine, NH Rolabar 258 Rake, NH 163 Tedder, IHC 435 Kicker Baler/#15 Thrower, H&S 16' Kicker Wagon, Two Wood Kicker Wagons, Flat Hay Rack, Case 30' Hay or Grain Elevators (2), NH 718 Chopper/Corn & Pickup Heads, Gehl Hi-Throw Blower, Gehl 940 SU Wagon/Roof, IHC 105 SU Wagon, NI 323 Corn Picker, #8 Crop Chopper, NI 361 PTO Spreader, CT 200 Gal. Trailer Sprayer, 3 PH Fertilizer Spreader, Wood Ex. Ladder, Ladder Jacks, Cross Cut Saws, Cant Hook, Gandy Applicator, Feeders, Fogger, Cow Clippers, Silage Cart, Wheel Barrows, Cow BRA's, Bob Sled, 48" Barn Fan, 3 PH Log Splitter, Tractor Chains, Power Hack Saw, Hand Tools, Patz Bed-N-Chopper, M & Parker 1650 Gravity Wagons, 200 Bus. Auger Grain Trailer, 5 Ton Running Gear, 2-Row Cultivators, Front Blade For H or M, IHC Wts. and 15 Ford Wts., Implement Tires (4-11LX15), Stock Tank, 50' 9" Silo Pipe, Wood Picking Box, Wind Breakers For MTA & 6710, Tank Washer, 10' Grain Auger (4"), Honda 200 3-Wheeler, Round Bale Feeders (3), IHC Draw Bar Mower, Elec. Fencers, Several Ton of Good Ear Corn, Old Oak Ice Box, Antique Trunk. Other Misc. Items. **Terms:** Cash or Approved Check. **Equipment 90% Like New!!!**

MR. & MRS. FRITZ BLILEY & WILLIAM BLILEY, Owners

DOUG CHESLEY AUCTIONEER, AU-000146-L
Chesley AUCTIONEERING
9530 RT. 89, NORTH EAST, PA 16428
Ph. 814-725-8238, or 725-1171

Public Auction Register

Closing Date Monday 5:00 P.M.
of each week's publication

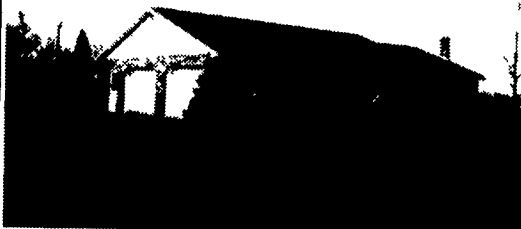
REAL ESTATE - ANTIQUES - GOLD FURNITURE - TOOLS - COINS PUBLIC AUCTION

SAT., MAY 9, 1998

Auction Time 9:00 A.M.

Real Estate 12:00 Noon

Directions: From Route 272 at Ephrata, take Schoeneck Road, go through Schoeneck, road becomes S Cocalico Road 1 1/2 miles north of Schoeneck, West Cocalico Twp., Lancaster Co., PA.



925 S. Cocalico Road, Denver (Near Schoeneck)

3 Bedroom Country Rancher

with modern eat-in kitchen, large living room with built-in book shelves, laundry with 1/2 bath, 3 bedrooms & full bathroom, full finished basement with 2nd kitchen & cold cellar, wood stove hookup, electric heat, large porch, garden area, approx 1360 sq ft. living space plus the basement.

- Well water • On site septic system
- Macadam driveway • Central air conditioning
- 2-car garage • 1.15 acre lot

NOTE: House is a 1 owner home only 11 years old, well constructed with brick & vinyl exterior. Don't miss this country property!

OPEN HOUSE:

Saturday, April 18 1:00 P.M. to 3:00 P.M.
Saturday, April 25 1:00 P.M. to 3:00 P.M.
or by appointment For appointment to see house or help to obtain financing call Aaron E. Martin, Auct. at (717) 733-3511

TERMS: 10% down payment day of auction, balance at final settlement on or before June 25, 1998
ATTORNEY: Michael P. Kane, 299-5251

Auction By
DANIEL B. MARTIN
(717) 336-6563



SAT APR 18 - 9AM Springetts Fire Co Social Hall, 3013 E Market St., York, PA Furniture, antiques, collectibles Jacob A & Brian L. Gilbert Aucts

SAT APR 18 - 9AM Keystone Auto Auction, Exit 28, off Rt. 81 in Grantsville, Pa Auto Auction Keystone Auto Auction

SAT. APR 18 - 9:30AM Ox Bow Rd., 11 mi S of Port Royal, PA off Rt 75 at Leasant View along the Tuscarora Creek Dump truck, tractors, farm machinery & farm related items By Larry Fry Estate Bryan D. Imes, Auct

SAT APR 18 - 9:30AM 408 Mc Farlan Rd., Kennett Square, PA Real estate, antiques, furn, glassware, appl, tools & Hh goods By Earl R Price, Sr John J McGrellis, III, Auct

SAT APR 18 - 9:30AM 7 mi W of Chambersburg, PA, W on Rt. 30 for 4-1/2 mi just past Denny's Auto Center, R onto Coble Rd., 2-1/2 mi to sale Farm machinery, misc, trucks & Hh goods By Garnet H & Catharine Myers Dennis

D Welker & John F Kohler, Aucts

SAT APR 18 - 10AM 1390 John Fitch Blvd., South Windsor, CT Equipment, sanders, gluers, saws/moulders, lathes/shapers, routers, spray/air equip, dust coil material handling & more By Link Wood Equipment Mfg Cambridge Ind Liquidators, inc., 716-685-0406.

SAT APR 18 - 10AM Lenox exit (64) of Rt 81 go S 2 mi on Rt 92, 8 mi N of Nicholson, PA off Rt 92 Farm machinery, industrial, vehicles, tools, bldg. materials & hay By Mrs Alex Kolodinsky Gerak R Pennay & Son, Aucts

SAT APR 18 - 10AM 630 Market St., Oxford, PA Furniture, collectibles & Hh goods By Mrs Ruth Hansen Whyte's Auct Svc., 717-786-7666

SAT APR 18 - 10AM 926 Hope Rd., Centerville, MD Farm equip, machinery, tools, Appaloosa stallion, Hh goods & misc By Donlin F Andrew Estate, 410-759-0839 Louis C Andrew & Sons, Aucts

SAT APR 18 - 10AM Action Auct Co., 43 S Main St., Ashley, PA Computer Auction PC Parts, Inc., 800-666-9373. Jim Chamberlin & Troy Penwick, Aucts

SAT APR 18 - 10AM 391 Medford Lakes Rd., Tabernacle, NJ Alternative Livestock & Bird Sale Harker's Auct. Co., Inc

SAT APR 18 - 10AM Just off Rt 724 along Old River Rd., Gibraltar, Robeson Twp., PA Shop equip & tools By Nevin & Galen Brown Horning Farm Agency, Inc., 610-286-5183

SAT APR 18 - 10AM 3 mi S of Waterford, PA or 5 mi N of Union City, PA on Rt 97 1/2 mi N of Rt 97 on Church Rd 54 Head registered dairy cattle & equipment By Mr & Mrs Fritz Bliley & William Bliley Chesley Auctioneering, 814-725-8238

SAT APR 18 - 10AM Whitcomb Hill Rd., Barton, Tioga Co., NY Hereford cattle, dozer, farm equip, tractors, trucks & trailers, & others By Kemp Poultry Farms, Le Roy, Manon & Milton Kemp Howard W Visscher, Auct

SAT APR 18 - 10AM Danville, Montour Co., PA Danville Auction's Annual Spring Consignment Sale Accepting consignments now, 717-275-2880

SAT APR 18 - 10AM New Holland Sales Stables, Inc., 101 W Fulton St., New Holland, Lanc Co., PA Horse Sale 717-354-4341

SAT APR 18 - 10AM Wheeler Vegetable farm, 1 Central St., North Reading, MA JD 2240, 1520, 530 & 40 wide front end tractors, Yale 3000# forklift, asst of tillage, planting & other equip & tools Phil Jacquier, Inc., Auct 413-569-6421

SAT APR 18 - 10AM Pumping Station Rd., East Waterford, Juniata Co., PA Signs Vehicles, tractors, engines, Hit & Miss Engines, & misc By Josephine Flood, 717-734-3988 Rentzel's Auction Service

SAT APR 18 - 10:30AM South Jersey Expo Center, Rt 73 in Pennsauken, NJ Antique Dolls Auction Sweetbriar, Aucts

SAT APR 18 - 11AM Greggs Rd., W on Rt 12 go to Whiteysburg, cross over into MD go approx 1 mi, L onto Gregg's Rd., 1 mi to sale on L, 1st farm Tractors, trucks, combine & farm equip By Wilson Steward Sam Walters III, Auct., 302-284-4619

SAT APR 18 - 12 Noon Rodger Bankert Farm, Rt 3, Hanover, PA Bankerts Show Pig Sale Harry H Bachman, Auct

SAT APR 18 - 12 Noon Carroll Co Ag Center, Westminster, MD Maryland All Breed Calf Sale By The Maryland Jersey Cattle Assoc For info Mike Birch - 410-557-6450 or Debbie Osburn, 410-775-2320

Consignment Machinery Auction

Sat., Apr. 25, 1998 9:00 A.M.

Located 12 miles north of Lewistown, PA (Mifflin Co) along Rt. 522 at village of Wagner

Early consignments including:

Tractors: JD2520g, narrow front, Farmall Super C, Farmall 300, w/loader, AC WD, MF 50, Oliver 88d, Oliver 77, 8N Ford, Farmall H, Ford 1821 w/loader, Oliver crawler, Bobcat skid steer

JD6600 combine, hydro (2700 hrs), JD216 flex head, JD15' rigid head, IH781 forage harvester with 2-row adjustable cornhead, JD #950 cultimulcher, 3 pt fertilizer spreaders, AC442 baler, AC309 haybine, AC2200 transport disc, Int 40' elevator, Int 3-bottom trail plow, JD 4-bottom trail plow, 5-shank chisel plow, 10-shank chisel plow, NH 256 rake, NH 259 rake, JD 42 combine, AC 60 combine sprayer, JD single disk drill, 3 pt new and used equipment, 2 thrashing machines, riding plow, Int grain binder, Int 2-row corn planters, horse drawn cultivator, NI 36' elevator, Zimmerman 36' elevator, JD 4-row corn planter, Bearcat flail chopper, White 10' disk, Pequea hay tetter, 10' cultipacker, high rack wagons, bin wagons, Int roll bar rake, 12 ton wagon gear, new storage sheds

More equipment being consigned daily.

Machinery and tractors will sell early

FOR CONSIGNMENT CONTACT:

IVAN MACKNAIR, Manager
2305 Vira Road, Lewistown, PA 17044
Phone 717-543-5192

Auctioneer

Blaine N. Rentzel & Assoc. Pa License 761

PUBLIC SALE ESTATE SALE SAT., APRIL 18, 1998 9:00 AM WOOD WORKING TOOLS • HOUSEHOLD • COLLECTIBLES • RIFLES • BOWS

Located at 242 Pangborn Blvd., Hagerstown, MD

From I-81 take I-70 East 6 mi to exit 32-B (Rt 40 west) 2 1/2 miles, turn right onto Eastern Blvd., go 1 mile, turn left onto Route 64 (Jefferson Blvd) 1/4 mile to Pangborn Blvd turn left, 3rd house on left

HOUSEHOLD and COLLECTIBLES

Elect appliances, several dishes, glassware, pots and pans, misc bowls, dining table with 6 chairs, serving trays, vision ware, elect typewriter, meat carving knives, steak knives, misc silverware, several pcs stemware, Russel Wright green dinnerware, complete set Britannica Encyclopedia, sofa bed, 4 pc sectional living room suit, bear rug, two arm rockers, wall mirror, floor lamp, corner table, cutting boards, table with center for flower, RCA color TV, Toshiba VCR, small oak table, Small carved jewelry box, walnut sewing table, several misc chairs, boxes of tapes, binoculars, misc cameras, book ends, Pfaff sewing machine, metal chest, clocks, sun lamp, electrox buffer, 2 chests-of-drawers with mirrors, misc blankets and linens, telephone and answering machine, dollies, costume jewelry, folding chairs, book shelving, floor model color TV, VCR, hand carved wall hanging, fireplace set, several toys most are wind-up, 10-15 yrs old, several baskets, some Longaberger, boxes of dress patterns, boxes of materials, large hair rug, space heater, Electrolux vac cleaner, RCA 12" TV, small cedar chest, several pcs home accent decor, 7 crocks (2 large), step ladders, 20' extension ladders, Hoover vac, 4 drawer file cabinet

Civil War books, several boxes of other old books, shaving mug, approx 30 old wooden wood planes and mallet, several old 33 records, handmade wooden candle holders, bowls; brandy snifters, few hobnail pcs, hand made dining table, few pcs Fostoria, small washbowl and pitcher, other old pieces, small wooden angels, kerosene lamps, autographed Orioles ball and cap

GUNS and BOWS

Excel 12 gauge single shotgun, Winchester model 69 22 rifle, Remington 222 with Weaver scope; 3 bows, one with sites; several arrows

WOOD WORKING TOOLS

Rockwell 36" lathe, carving tools, Sears buffer, Craftsman 10" radial armsaw, drum sander, Craftsman 12" band saw, Delta drill press, Boice Crane 12" planer, Craftsman drill press, Craftsman 12" table saw, Craftsman 6" jointer, Delta 8" jointer, drill bits, work bench with vise, several clamps, mortising tools, power saws, drill, sanders; crosscut saw, die grinder, planes, B+D cut saw, elect staple gun, stamp and die set, several lawn chairs, pieces of walnut, cherry, pine lumber, semi-finished corner cupboards, ammo box, small boxes, socket set; files, assortment of screws, nails, router bits, wrenches, pliers, screw drivers, metal lockers, two wheel barrows, two butchering kettles, push plow, extension cords

LAWN MOWERS

Craftsman 12 HP 38" cut 6 speed riding mower with bagger, Sears 22" mower and bagger; Toro 21" snowblower, 17" weed wacker, hedge trimmer, many other useful items too numerous to mention

Terms - cash or approved check, ID required, nothing removed until settled for not responsible for accidents

SALE ORDER: HOUSEHOLD THEN TOOLS

Auctioneer: C. Floyd Davis
Clerks: Drury and Drury

Estate of: Mary D. Heltzel
242 Pangborn Blvd.
Hagerstown, MD
PR.: Joseph P. Dattilio
301-582-2269

LUNCH RIGHTS RESERVED

PUBLIC AUCTION

Thur., April 16, 1998, 11 AM
and Thur., April 23, 1998 11 AM
1003 Maclay St., Harrisburg, PA

RESTAURANT EQUIPMENT FROM THE BUREAU OF BLINDNESS AND VISUAL SERVICES

2 AUCTIONS HELD ON 2 CONSECUTIVE THURSDAYS
2 AUCTIONS NECESSARY DUE TO LIMITED SPACE

SELLING ON THURSDAY APRIL 16TH AT 11 AM Featuring 28 front counter restaurant modules with stainless steel tops manufactured by Lincoln - great for churches, banquet halls, firehalls, etc - 5 Two-Pot Hot Soup Modules (4-28", 1-60"); 4 Beverage Modules (3-50", 1-64"); 3 Refrigerated Cold Pan Modules - 50"; 2 50" 3-Pan Hot Food Modules; 8 Flat Top Modules (3-28", 2-50", 1-64", 2-79"); 64" Sandwich Unit Enclosure Module; 3 32" Corner Modules; 50" Cash Register Module; 4 Wooden Cabinets; Cash Register; 6 Coffee Urns; Miscellaneous Coffee Pots, Cup Holders, Trash Cans; 3 Coffee Makers; 2 Sm. Weight Scales; Roaster; Paper Money Identifier; 4 Food Warmers; Can Opener; Floor Fan; 5 Refrigerated Sandwich Units; 2 Ice Dispensers; Sprayer; 2 Ice Maker Dispenser Bins; Stainless Steel Soda Dispenser Cabinet; Ice Cream Freezer; 79 Tables - Various Sizes; 97 Chairs; 12 Sections Steel Shelving - Various Sizes; Fresh-O-Matic.

SELLING ON THURSDAY APRIL 23TH AT 11 AM: Featuring 24 front counter restaurant modules with stainless steel tops manufactured by Lincoln - great for churches, banquet halls, firehalls, etc - 79" Beverage Module; 79" Equipment Holding Module; 64" Sandwich Unit Enclosure Module; 16 Flat Top Modules (1-28", 8-50", 4-64", 2-79"); 2 Cash Drawer Modules (1-28", 1-50") 32" Corner Module; 2 Three-Pan Hot Food Modules; 64" Non-Refrigerated Cold Pan Module; 85 Tables - Various Sizes; 11 Sections Steel Shelving Plus Miscellaneous Loose Shelves; 5 Refrigerated Sandwich Units; 5 Freezers; 88 Chairs; 6 Refrigerators; Large Meat Slicer; 2 Hot Plates; 2 Icemaker/Bins; Two-Bowl Stainless Sink.

9.45% BUYERS PREMIUM APPLIES TO ALL PURCHASES

TERMS & CONDITIONS: Cash and PA state checks only. No out of state checks. Come prepared to move your purchases. All items must be moved out by the next day.

DOORS OPEN FOR PREVIEW AT 8:30 AM ON AUCTION DAY

DIRECTIONS - HARRISBURG, PA - Off Rt. 81, take exit 23 onto Cameron St. Go past the State Farm Show Complex. Turn right onto Maclay St. Go 1 block to auction site. **WATCH FOR SIGNS.**

ZEIGLER AUCTION COMPANY, LTD.

717-533-4267 PA LIC# 2120-L FAX 533-2114

"AUCTION - THE ULTIMATE MARKETPLACE"

