

Soybean Depth Control, Plant Population Successful Ingredients For Winner



A three-acre "block" was cut out of the main field and weights were taken separately. Here Jon stands with son Phillip on last year's championship soybean ground.

(Continued from Page A26)

percent planted before May 10. The earliest planted acreage in the contest was April 28 and the latest May 29. Ninety-four percent of the contestants inoculated and 67 percent used a drill. Fifty-six percent seeded in rows less than 10 inches apart and 33 percent seeded into 14-15-inch rows. In overall plant population, 53 percent had plants per acre totalling 200,000 or more. Ninety-four percent of the participants noted good weed control. No one rotary hoed and plant lodging was noted as "very little."

Last June Stutzman hosted about 25 members of the Kutztown

Young Farmers Association at his farm. The field day looked into his crop management strategies. Jon specializes in a variety of agronomic crops.

Ideally, Stutzman indicated he would like to raise more vegetable crops. Five years ago the family began a sideline business, selling fall ornamentals, including pumpkins, gourds, and Indian corn.

"We enjoy entering our crops in the fair," he said.

His children not only help with a stand out in front of their farm selling pumpkins and gourds in season, they also help with vegetable harvesting.

York County Sets Holstein Open House

BROGUE (York Co.) — A York County Holstein open house is scheduled for H.E. Heindel and Sons, based here, on Tuesday, April 14, at 7 p.m.

Featured speaker is Dave Rama,

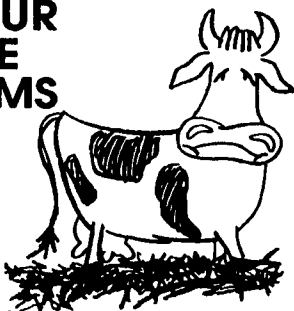
Cattle Exchange, Delhi, N.Y., on merchandizing.

For directions to the open house, take Rt. 74 south of Brogue. Take the first road right, which is Workinger Rd. Take Workinger Rd. until it dead-ends at the farm lane, about 1 1/2 miles.

For more information, contact Dan Hushon or Jeff Heindel at the farm, (717) 927-6558.

Since 1972...
The Original & The Largest
POURED SOLID CONCRETE STORAGE SYSTEM SPECIALISTS

ARE YOUR MANURE PROBLEMS KNEE DEEP?



If so, call Balmer Bros.

■ Poured Solid Concrete Steel Reinforced Walls.

■ The Wall Is Only As Good As The Material Used.

- Manure Pit Walls
- Hog House Walls
- Chicken House Walls
- Concrete Decks
- Silage Pit Walls
- Retaining Walls

Balmer Bros.

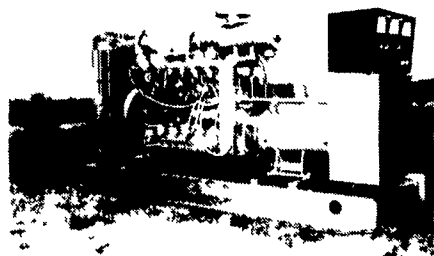
CONCRETE WORK, INC.

Invest In Quality - It Will Last A Lifetime

243 Miller Road
Akron, PA 17501

(717) 733-0353
8:30 AM - 3:30 PM

(717) 859-2074
After 8:00 PM



GENERATORS

Sales ★ Service ★ Rentals
* Complete Generator Systems
*PTO * Portables * 2-1600 KW
"We Service It If You Have It
And Sell It If You Need It"

34 W. Mohler Church Rd.
Ephrata, PA 17522
Tel: 717-738-0300
Fax: 717-738-4329

The Beauty of Wood. **WARM**
Gas Heat Convenience. **WINTER**



Your Chance To Save \$360-\$525 Off While They Last!

Come in and learn about the convenient line of Vermont Castings gas stoves and fireplaces. Rugged cast-iron construction and easy to operate. And now at the lowest price ever.

Made in the U S A
1060 Division Hwy
(Rt. 322 E)
(717) 733-4973

Ephrata PA 17522
800-642-0310



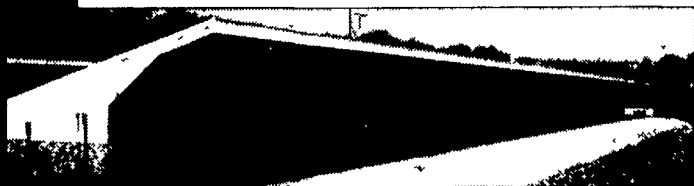
www.bowmansstove.com

HOURS
Mon., Tues., Wed 10 to 6
Thurs., Fri. 10 to 8; Sat. 10 to 4



Planning to expand or update?

Check with Agri-Inc. where quality is our standard.



OPEN-SIDED CALF FACILITY

OPEN-SIDED HEIFER FACILITY



Site layout, building design & construction.

- Dairy complexes and replacement stock facilities
- Horse stall barns and riding arenas
- Workshop and machinery storage buildings
- Timber column buildings for light commercial

AGRI-INC.

The Construction Professionals



Serving The Agriculture Industry For Over 29 Years

151 E. Farmersville Road, Ephrata, PA 17522 • (717) 354-4271

CAPLAN & LUBER, LLP

Offices In Pennsylvania and New Jersey

1-800-472-4356

Internet: <http://caplublaw.com>

Call Richard Caplan or Joel Luber for a FREE consultation

"Lawyers Who Understand Farming & Farmers"

Our law firm handles matters including:

- Planning for farm business, tax and estate matters; preparing wills, trusts, partnership and corporation forms.
- Resolving farm insurance coverage disputes;
- Obtaining recovery for injuries arising from farm accidents;
- Handling real estate, equipment and other farm business transactions;
- Protecting farmers from environmental liability;
- Counseling in agricultural and water law, farm-related contracts and all types of litigation.
- Assisting with electricity and natural gas procurement issues.