



**1990 Ford F150 4x4**  
302 V8, Auto  
AC Loaded **\$6,995**

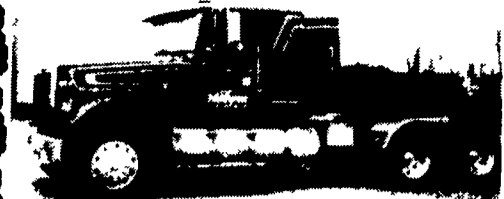
**1986 Ford F150 4x4 302 V8,**  
Auto, PS, PB, PW&L  
Tilt & Cruise, AC **\$5,995**



**Bronco Dump Trailer**  
7,000 GVW **\$2,500**

**STROBECK'S** AUTO SALES  
262 W. George St. Yoe, PA **717-244-4282**

**1985 White Volvo Tractor**



**400 Cat, Jake Brake, 13-Spd, Air Ride, Air Ride Cab, Wet Line, New Clutch and Other Work Done Last Fall. "Good Running Truck" \$13,500 or best offer**  
Bucks Co.

**(215)249-1826**

**Dodge Cummins Diesel**

1 ton club cab, 4WD, dually, 1993, LE Pkg, 94,000 mi., many extras, excellent condition  
**(717) 949-3246** after 6 p.m.

**72 White T-A Truck Tractor Conv. 318 Detroit. Good Rubber. Inspected. Good Cond. Motor is Tired. \$1,200 OBO 717/653-4830**

**CASH FOR USED DIESEL TRUCKS!**

- WE NEED 1/2 TON TO ONE TON:**
- FORD DIESELS
  - SUPERCABS
  - CREW CABS
  - DODGE CUMMINS
  - 2WD OR 4X4
  - DUALIES
  - DUMPS
  - UTILITY BODY
  - FLAT BEDS
  - CAB & CHASSIS
  - SUPER DUTIES

**LOW MILEAGE ONLY PLEASE**

Before you sell or trade your diesel In somewhere else for **LESS.**

**CALL US!**

We Pay More for Used Diesel Trucks Than Anyone. **TRY US!**

**717-949-2000**

OR

**610-678-3243**

Ask for Smokey or Kay



RD 7, Box 405  
Lebanon, PA  
17042

**ARMY TRUCK PARTS**

CHAMBERSBURG, PA

**COMPLETE TRUCK INVENTORY  
COMPLETE PARTS INVENTORY  
THE NATION'S LARGEST ARMY  
TRUCK AND PARTS DEALER**

Army truck parts catalogs available

**MEMPHIS EQUIPMENT**

821 Lincoln Way West  
P.O. Box M  
Chambersburg, PA 17201

**717/263-4194 FAX 717/263-4555**



GLENN ALLEMAN, GEN. MGR.  
MARK SIPES, PARTS MGR.



**RIFE MOTOR CO., INC.**

768 N. Franklin St. • Chambersburg, PA 17201  
PHONE: (717) 263-8518  
FAX: (717) 263-4293



1994 Auto Car Tri Axle Dump, 425 Cat. 14708LL. A/C 16 ft. Heated, Steel, J&J Body. Only 131,000 Miles. Very Clean Tk. with lots of options.  
**\$69,900**



1996 KW W900L. Aero-cab. 475 Cat. 10 Speed Lo Hole. 18 ft. Hewey Alum. Body. New Way Air Ride. 173,000 Miles. Immaculate Cond. Asking **\$93,000** O.B.O. Customer Truck.

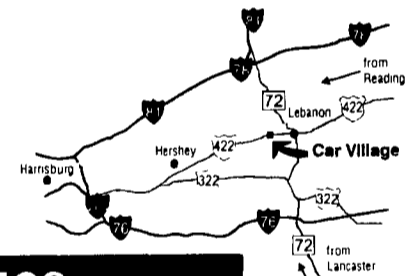
**Business Hours:**  
Mon.-Fri. 9 to 9;  
Sat. 9-4

**RTE. 422 WEST  
LEBANON, PA**

(Across From Lebanon Valley Mall)

**CAR VILLAGE**

**HEAVY DUTY TRUCKS**



**PHONE 717-274-2000 Toll Free 1-800-650-1420**



**4x4 CLUB CAB DUALLY 95 DODGE**  
Black Beauty is Here, Cummins Turbo Diesel, AT, A/C, 4:10 Gears, Tow Pkg, Chrome, Simulators, 32,000 Miles



**4x4 SUPER CAB DIESEL, 94 GMC SLE**  
Good Lookin & Only 48,000 Miles, 6.5 Turbo Diesel, AT, A/C, Capt. Chairs, Console, Aluminum Wheels, Remaining Factory Warranty \$18,900



**4x4 CREW CAB 96 CHEVY K3500 SILVERADO**  
Perfect - Only 21,000 Miles, High Output 6.5 Turbo Diesel, AT, A/C, CD Player, 4:10 Gears, Tow Pkg.



**12 FOOT BOX TRUCK 88 FORD F350**  
Very Nice, Very Clean, Only 33,000 Original Miles, V8, Auto, Runs & Drives Great, Will Sell As Chassis



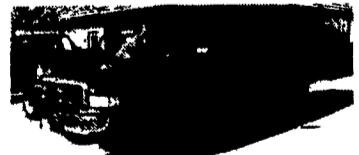
**97 DODGE 2500 HEAVY DUTY PICKUP**  
A Real Looker, All New TK Warranties, Only 22,000 Miles, Cummins H.D. 5spd L.S. 4:10 Gears, Tow Pkg.



**QUAD CAB - 4 DOOR, 98 DODGE 3500 4X4**  
Almost New, Only 700 Miles, Cummins Turbo Diesel, 5 Spd., AC, 4:10 Limited Slip Axle, Great Tow Machine



**5 Sp. Cummins 95 DODGE 2500 CLUB CAB.**  
Hard To Find - Don't Wait. Powerful Cummins Diesel 5 Sp. A/C Tow Pkg 2 Tone Paint. 49,000 Miles, New Tk. Warranty



**WORK STYLE 97 DODGE CLUB CAB**  
4 Wheel Drive, Nothing Fancy, Just Ready To Work, Cummins Turbo Diesel, Auto, A/C, Vinyl Floor, 31,000 Miles



**5 SPD POWERSTROKE SUPER CAB 96 FORD F250**  
4 Wheel Drive, Awesome Tow Machine, Gooseneck & Class 3 Hitch, Diesel Power, 5 Spd, A/C, 4:10 Gears, Dual Tanks, 32,000 Miles



**1 TON DIESEL 97 FORD F350 XLT**  
It's Perfect Only 23,000 Miles, All Fact Warranties, Powerstroke Turbo, AT, A/C, Solin Frt. Axle, A Real Truck



**5 SPD. DUALLY 97 DODGE 3500 SLT LARAMIE**  
Awesome Tow Machine, Cummins Turbo Diesel, 5 Spd., AC, Tilt, Cruise, Heavy Duty Frt & Rear Dana Axles, 4:10 Gear, New Truck Warranty



**TOW MACHINE 94 CHEVY SUPER CAB DUALLY**  
4 Wheel Drive, Real Clean, 30,000 Miles, High Output 6.5 Turbo Diesel, AT, A/C, 4:10 Gears, You'll Like It.



**WESTERN HAULER 94 CHEVY CREW CAB DUALLY**  
Only 58,000 Original Miles, Strong 454 I.I., V8, Auto, A/C, Gooseneck Hitch, This Truck Will Tow Big Loads \$17,900



**HEAVY DUTY DUMP 97 CHEVY HD 3500**  
6.5 Turbo Diesel, 5spd, A/C, Only 11,200 Miles, Will Sell as Chassis



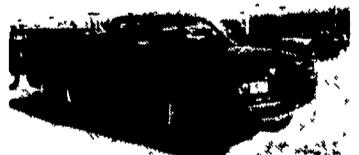
**Work Van, 95 FORD E250 Super Cargo Van**  
Nice & Clean, 47,000 Miles, Heavy-Duty 3/4 Ton V8, Auto, A/C, Rear Glass Only



**2-WHEEL DRIVE 96 CHEVY CREW CAB DUALLY**  
Perfect, Like New, Only 11,000 Miles, High Output, 6.5 Turbo Diesel, Auto, AC, Tilt, Cruise, 4:10 Limited Slip Gear, Nice Tow Machine



**Only 3,000 Miles 97 DODGE CLUB CAB DUALLY,** 4 Wheel Drive, Like New, Cummins Turbo Diesel, AT, A/C, 4:10 Limited Slip Tow Pkg.



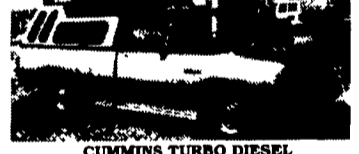
**94 DODGE 3/4 TON 4X4**  
Heavy Duty 8800 GVW, Cummins Turbo Diesel, AT, A/C, Tow Pkg, 40,000 Miles, Remaining New Tk Warranty \$19,900



**4 DOOR F250 4X4 WE HAVE (3)**  
97 Powerstroke, AT, 13,000 Miles  
96 Powerstroke, AT, 32,000 Miles  
96 Powerstroke, 5 Sp., 44,000 Miles



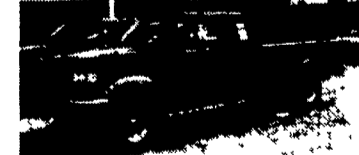
**Work Style, HEAVY DUTY FORD F250 SUPER CAB XL,** Powerstroke Turbo Diesel, AT, A/C, Vinyl Floor



**CUMMINS TURBO DIESEL 92 DODGE HEAVY DUTY**  
3/4 Ton Very Strong - Very Clean Truck, Local 1 Owner Trade, Only 37,000 Miles, Probably The Nicest Anywhere

**FARM FLATBEDS**

85 CHEVY V8 Auto,  
Aluminum Bed.....\$3,900  
84 FORD F350, V8, Auto...\$3,500



**4X4 DIESEL SUPER CABS 96 FORD F250's - 2 Available**  
Powerstroke Turbo Diesel, AT, A/C, Tilt, Cruise, All Options - Aluminum Wheels, Low Miles, New Tk Warranty



**4-Door Crew Cab, 94 CHEVY,** Room for the Family or Work Crew, Local 1-Owner Trade, Only 50,000 Miles, 6.5 Turbo Diesel, AT, A/C, Silverado Pkg. Beautiful



**L-PAK DUMP 94 FORD SUPER DUTY**  
Heavy Duty, 15,000 GVW, Power Stroke Turbo Diesel, 5spd, Only 32,000 Miles, Will Sell as Chassis