

LEESPORT LIVESTOCK AUCTION
LEESPORT, PA
APRIL 8, 1998
CATTLE 247 [PDA] [Supply included 71 slaughter steers and heifers, and 80 feeder cattle] Compared with last Wednesday's sale sl steers and heifers 100 to mostly 200 higher, cows 100 to 200 spots 300 higher, bulls steady to 50 higher
SLAUGHTER STEERS Choice 2-3 1235/1510 lbs 60 00-64 00, few Select 1-3 54 25-59 75
HOLSTEINS High Choice and Prime 2-4 1350/1590 lbs 57 00-59 25, Choice 1270/1655 lbs 53 50-57 50, Select 1-3 49 75-54 00, one Standard @ 47 25
HEIFERS few Choice 2-3 1135/1185 lbs 60 75-61 75, one 57 75, Select 1-3 53 00-58 00, few Standard 45 00-50 25
COWS Breaking Utility and Commercial 2-3 38 00-41 25, one 44 75, Cutter and Boning Utility 1-3 36 00-40 00, Canner and Low Cutter 1-2 31 00-38 00 mostly 33 75-36 75 Shells 20 50
BULLS Yield Grade 1 1300/1645 lbs 46 50-49 50, one @ 51 50, Yield Grade 2 1005/1280 lbs 44 25-46 75
FEEDER CATTLE STEERS Medium Frame 1 & 2 360/610 lbs 71 00-77 00, Large Frame 2 600/825 lbs Holsteins 51 50-57 50
HEIFERS Medium & Large Frame 1 350/575 lbs 70 00-73 00, one lot 68 50, Medium Frame 2 340/510 lbs 50 00-56 75, one lot Large Frame 2 550 lbs 58 50, **BULLS** few Large Frame 1 565/860 lbs 55 00-56 00
CALVES 173 **VEALERS** Choice

120/180 lbs 75 00-85 00, Good 110/355 lbs 45 00-75 00, Standard and Good 75/100 lbs 17 00-20 00, Utility 50/90 lbs 9 00-15 00.
FARM CALVES Holstein bulls steady to 500 lower.. No 1 Holstein bulls 90/120 lbs 87 50-110 00, few 117 50, No. 2 80/120 lbs. 40 00-85 00, few down to 25 00; No 1 Holstein heifers 90/120 lbs 95 00-130 00, No 2 80/100 lbs 70 00-85 00.
Beef cross bulls and heifers 85/110 lbs 40 00-67 50, one 105 00.
HOGS 107 Barrows and gilts steady to 75 lower, sows 50 to 100 lower
BARROWS AND GILTS US 1-3 225/270 lbs 33 25-33 75, US 2-3 230/280 lbs 32 50-33 25
SOWS US 1-3 350/480 lbs 21 00-23 50, few 520/550 lbs 24 00-26 50, few Medium 415/480 lbs 18 00-19 00
BOARS few 290/350 lbs 19 50-19 75
FEEDER PIGS 167 US 1-3 20/30 lbs 62 50-85 00, 30/40 lbs 46 00-53 00, 40/60 lbs 43 00-47 00 --- per cwt.
SHEEP 315 Slaughter lambs steady 10 00 higher, 20 00 higher on 40/60 lbs
SLAUGHTER LAMBS High Choice and Prime 25/40 lbs 180 00-210 00, 40/60 lbs 150 00-165 00, Choice 20/40 lbs 150 00-180 00, few down to 135 00, 40/65 lbs 130 00-155 00, 70/80 lbs 102 00-115 00, lot @ 130 00, 80/110 lbs 82 50-90 00, Good and Choice 20/40 lbs 105 00-130 00 **OLD CROP LAMBS** Choice 80/115 lbs 70 00-77 50, 120/150 lbs 67 50-72 50, Good and Choice 80/165 lbs 50 00-60 00
SLAUGHTER SHEEP 20 00-52 50

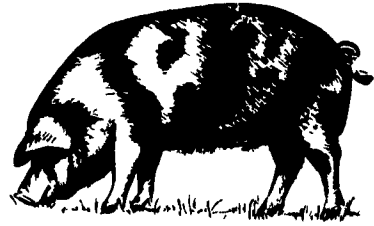
GOATS 87 One Medium Billy @ 67 50, few Large Nannies 50 00-52 50, few Medium 27 50-37 50, Large Kids 40 00-65 00, Small 22 00-42 50. --- per head.
NEW WILMINGTON LIVESTOCK AUCTION
NEW WILMINGTON, PA
APRIL 6, 1998
CATTLE 160 [PDA] Compared with last Monday's sale sl cows mostly steady
SLAUGHTER STEERS Choice 2-3 1125/1400 lbs 61 50-66 50, one Select 1-3 @ 54 50
HEIFERS one Select 1-3 @ 55 50
COWS few Breaking Utility and Commercial 2-3 35 00-40 50, Cutter and Boning Utility 1-3 31 00-37 50, Canner and Low Cutter 1-2 27 75-32 50 Shells down to 23 00
BULLS few Yield Grade No 1 1280/1545 lbs 41 00-42 25, few No 2 1380/1755 lbs 39 00-40 00
FEEDER CATTLE STEERS Medium & Large Frame 1 & 2 360/735 lbs 58 00-69 00, few Large Frame 2 340/770 lbs 50 00-54 50
HEIFERS Medium & Large Frame 1 300/600 lbs 60 00-75 00, few Medium Frame 2 345/570 lbs 48 00-56 50
BULLS few Medium Frame 1 290/495 lbs 61 00-65 00
CALVES 156 **VEALERS** one Choice 230 lbs @ 95 00, one Good 135 lbs @ 90 00, Standard and Good 75/105 lbs 22 50-30 00, Utility 50/80 lbs 5 00-19 00
FARM CALVES No 1 Holstein bulls 115/135 lbs 65 00-70 00, 95/115 lbs 85 00-109 00, 85/90 lbs 50 00-75 00, No 2 90/115 lbs 50 00-75 00 few No 1 Holstein heifers 80/130 lbs 100 00-130 00, No 2 95/160 lbs 50 00-

110 00
Beef cross bulls and heifers 80/125 lbs 35 00-117 50
HOGS 297 Barrows and gilts 2 50 lower
BARROWS AND GILTS: US 1-2 200/260 lbs 33 75-35 50, US 1-3 200/270 lbs. 32 50-34 00, US 2-3 240/260 lbs 32 00-32 50
SOWS US 1-3 280/655 lbs 24 50-32 25.
BOARS 200/305 lbs. 16 50-21 50
FEEDER PIGS 10.. NO MARKET TEST!
SHEEP 346 NEW CROP LAMBS: Choice 80/105 lbs 90 00-112 50, 70/80 lbs 100 00-107 50, 30/70 lbs 100 00-160 00, Good and Choice 20/30 lbs 55 00-85 00, 30/80 lbs 60 00-80 00
SLAUGHTER LAMBS. 17 50-39 00, Yearlings 40 00-51 00
GOATS 56..One Large @ 75 00, few Medium 35 00-45 00, Small 22 50-40 00, Large Kids 27 50-48 00, Small 10 00-17 00 --- per head

GOOD 47.00-58.00.
BULLS: HEAVY 44.00-50.10, LIGHT 38.00-45.00.
COWS: UTILITY (HOLSTBIN) 35.00-42.50, COMMERCIAL TO GOOD 31.00-34.50, CULL COWS 30.00 AND DOWN.
VEALS: GOOD TO CHOICE 50.00-65.00, MEDIUM TO GOOD 20.00-46.00.
BOB CALVES: 29.00 AND DOWN. HOLSTEIN BULL CALVES — RETURN TO FARM (90 TO 120 LB.)-UP TO 92.00.
HOLSTEIN HEIFER CALVES — RETURN TO FARM (90 TO 120 LB.)-UP TO 114.00.
BEEF CROSS CALVES — RETURN TO FARM UP TO 100.00.
HOGS: TOP QUALITY UP TO 35.00, HEAVY UP TO 34.50, LIGHT 28.00-31.00.
SOWS: 29.00-31.00.
MALE HOGS: 21.00-28.00.
LAMBS, LIGHT AND FEEDER, NONE AVAILABLE.
SHEEP: 20.00-42.00.
LIVESTOCK PRICES ARE ALL GIVEN PER HUNDRED WEIGHT!
ANNUAL SPRING GRASS CATTLE SALES APRIL 25 AND MAY 9.

Friend's Stockyard Inc.
 Accident, Md. 21520
 Report Supplied by Auction
 April 6, 1998

STOCK BULLS AND STEERS (200-500 LBS.) 52.00-88.00.
STOCK HEIFERS: 36.00-77.00.
SLAUGHTER STEERS: GOOD TO CHOICE 58.50-63.10; MEDIUM TO GOOD 56.00-59.50, HEAVY CHOICE OVER 1450 LB. 55.00-61.50.
HOLSTEIN STEERS: HEAVY CHOICE 39.00-52.50, LIGHT 38.00-45.00.
SLAUGHTER HEIFERS: GOOD TO CHOICE 58.25-62.80; MEDIUM TO



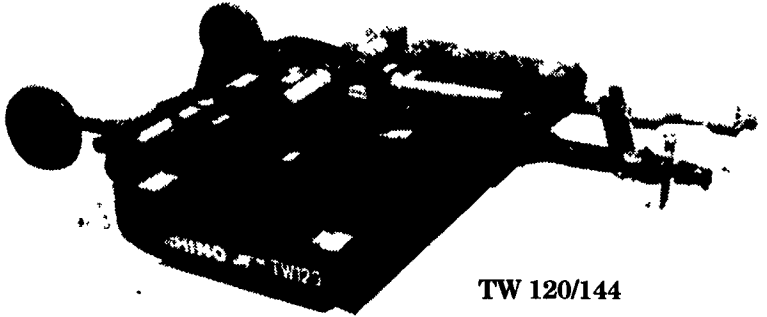
Grantsville Livestock
 Grantsville, Maryland
 Report Supplied by Auction
 Sat., April 4, 1998
STOCK BULLS AND STEERS 200-500 LBS. 60.00-86.00.
STOCK HEIFERS 60.00-77.00.
SLAUGHTER STEERS GOOD TO CHOICE, NONE AVAILABLE; MEDIUM TO GOOD 45.00-61.00.
HOLSTEIN STEERS GOOD 41.50-50.00; LIGHT 40.00-50.00.
SLAUGHTER HEIFERS GOOD TO CHOICE 61.50-64.50; MEDIUM TO GOOD 42.00-61.00.
BULLS: HEAVY 36.00-46.50, LIGHT 40.00-48.00.
COWS: UTILITY HOLSTEINS 30.00-42.00, CANNERS 29.50-35.00, CULLS 27.00 AND DOWN.
VEALS GOOD TO CHOICE UP TO 88.00, MEDIUM TO GOOD 35.00-55.00.
BOB CALVES: 22.00 AND DOWN.
HOLSTEIN BULL CALVES RETURN TO FARM: 90-120 LBS. UP TO 85.00.
HOLSTEIN HEIFER CALVES RETURN TO FARM UP TO 90.00.
BEEF X CALVES RETURN TO FARM: UP TO 67.00.
HOGS: TOP QUALITY 33.00-39.00, HEAVY 32.00-35.00, LIGHT 30.00-33.00, FEEDER PIGS BY THE HEAD, UP TO 45.00.
SOWS: UP TO 32.00.
MALE HOGS: UP TO 24.00.
LAMBS: 70-85 LBS. UP TO 107.00; 85-125 LBS. UP TO 96.00; 30-60 LBS. UP TO 135.00; CULLS 60.00 AND DOWN.
SHEEP: UP TO 40.00.
GOATS: ALL BY THE HEAD, LARGE 50.00-85.00; MEDIUM 20.00-50.00; SMALL 8.00-34.00.
ANNUAL EASTER LAMB AND GOAT SALES SAT., APRIL 11.

SERVIS-RHINO®...

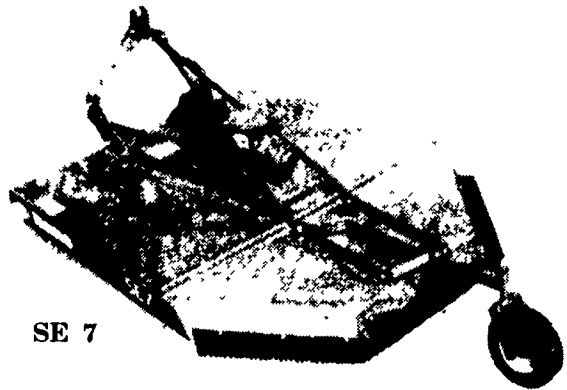
We Cut A Wide Swath Past The Competition!

TW 120/144

- * 120" and 144" Cut; 540 or 1000RPM
- * 120 HP Center Gearbox; 100 HP Outboard Gearboxes
- * Pan Blade Carriers; Updraft Blades
- * Lift, Pull, or Semi-Mount Hitch; 10 Gauge Deck; 1/4"x10" Side Skirts
- * Rated For Up To 2" Diameter Material; Safety Deflectors Std.



TW 120/144



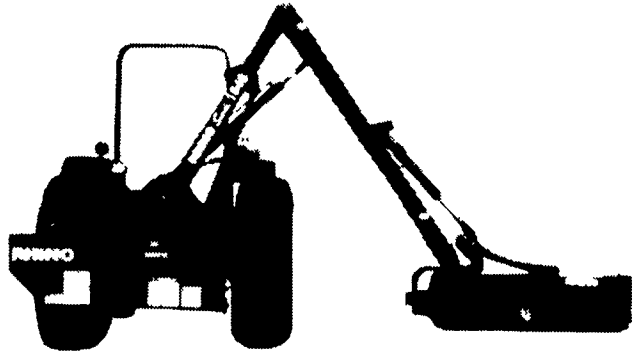
SE 7

SE's

- * 48", 60", 72", and 84" Widths Available
- * Pan Blade Carrier; Updraft Blades
- * Cat I or II Hitch, Dependent On Model
- * Rated For Up To 1" Diameter Material, Safety Deflectors Std.

Servis® 1348, 1548, 1948

- * 12' 10", 15', and 18'8" Maximum Horizontal Reach Respectively
- * Cat II Hitch; 540 RPM; Independent Hydraulics
- * 48" Flail Head Rated For Up To 1-1/2" Diameter Material
- * 37" Flail Head Rated For Up To 4" Diameter Material
- * 32 HP To 55 HP Minimum Tractor Requirements



Servis 1348, 1548, 1948

Call 1-800-356-6282 or Contact Your Nearest Servis-Rhino Dealer For More Details!

<p>GROUP FARM EQUIPMENT Bedford, PA 15522 814-623-0747</p>	<p>J&M MACHINERY CO. INC. Greensburg, PA 15601 412-668-7850</p>	<p>DUGAN TRACTOR, INC. Mansfield, PA 16933 717-662-3200</p>	<p>BINKLEY & HURST BROTHERS INC. P.O. Box 0395, Lititz, PA 17543 717-626-4705</p>
<p>NORTHEAST DIST. & EQUIPMENT Clifford, PA 18413 717-222-9090</p>	<p>CHARLES H. SIEPIELA, INC. Honesdale, PA 18431 717-253-3334</p>	<p>ERB & HENRY EQUIPMENT INC. New Berlinville, Pa. 19545 610-367-2169</p>	

