

4 BUILDINGS AND SUPPLIES


ROHRER CONSTRUCTION

Specializing in Agricultural Post-Frame Construction
Heifer Barns • Equipment Sheds • Garages • Decks
Metal Siding and Roofing

2459 Noble Road
Kirkwood, PA 17536

Jerri Rohrer
phone 717-529-0936
fax 717-786-7872

STEEL BUILDINGS - INEXPENSIVE
"We Build All Year"
ESTIMATES FREE



SPECIAL-24'x30'
\$4,700-OHD, CONC
FL-NOT INCLUDED
LTD OFFER

CONSTRUCTION ASSOCIATES Quality - Not Undersold
717-564-6886

Metal Roofing & Siding 25 Year Warranty Painted



Wheeling Centurydrain™ Roofing and Siding



Wheeling Channeldrain™ Roofing and Siding
Galvanized & Painted

1-1/4", 2-1/2" Corrugated. 5-V Crimp
Seamless Rolls 26-1/2" x 50', 28" x 80'

Full Line Trim, Nails, Screws, Windows, Doors, etc.

We Deliver

A.B. MARTIN ROOFING

105 Slate Road, Ephrata, PA 17522
(717) 445-6885 1-(800) 373-3703
Fax (717) 445-7893
Mon. - Fri. 7 AM - 5:30 PM • Sat. 7 AM - 11:30 AM

WANT: Old barns and mushroom houses to dismantle for building material.
(610)367-8193.

Warehouse for rent.
125x58, 14x20 overhead door, 10 minutes for I-81.
Newville. 717-776-6664

5 GRAIN EQUIPMENT

5 GRAIN EQUIPMENT

Model 400 MC grain dryer,
\$1,500. (717)369-3724.

Sprout Waldron 501-D pellet mill, extra dies, 60hp, electric w/ starter and disconnect, asking \$3,500/obo. 540-721-2150 or 540-721-2643



Grains, Bins
Grain Dryers

Sones
Grain Systems
Jim & John

Check Our Prices Before You Order
We Personally Install Everything We Sell
717-584-2282



RR7, Box 470
Muncy, PA 17756

Stirring Machines
Grain Cleaners

6 DAIRY EQUIPMENT

1000 gallon milk keeper tank, washer, tre heater, Bou-Matic double-4 parlor, milking equipment. Leola. 717-656-6352

64hp Mitsubishi diesel, water cooled, excellent condition, including control box & safties, \$2100 OBO. 717-687-6817

12 Dellatron parlor pulsators w/mounts also control box, \$1,300. 8 DeLaval ARM takeoff units, \$1,400. (717)597-5623.

400 gal. Vaccooler milk tank w/compressor, working order, \$600 OBO. 301/223-8048.

100 cu. ft. Vandale auger mixer w/beam scales, good condition, \$2,575. No Sunday calls. (717)464-5631.

800gal. Mueller milk tank, Surge 2" ss pipeline w/4 units and vacuum pump. 410-795-3536.

8 barn fans, 24", \$75/ea. Hubler silage cart, \$1200. Wic grain cart, \$100. 2-ton feed bin. Patz gutter cleaner, complete, 200' chain, \$800. Acom gutter cleaner, make offer. 717-437-2811

9 ceiling fans. Emmanuel L. King 717-661-7704 5-8 Mornings or evenings

Bender dumping station \$350; 6 Surge bucket milkers \$80/each; Boumatic 3.5hp vacuum pump \$350. Can deliver. 410/692-0250.

FOR SALE: Lots of used claws, shells, pulsators, takeoffs, meters, weigh-jars, bucket milkers, DV-300's, receiver groups, CIP's, etc. Many brands and models. "Free" UPS shipping or delivery. BUY-SELL-TRADE. 15 day Satisfaction Guarantee. E-ZEE MILK-ING EQUIPMENT, INC. Office hours: 7am-5pm. Business NOT OPEN to public EXCEPT by appointment. Gordonville, PA 17529 717-768-7599.

Gehl MF170 TMR \$1500. Dodge 1977 1-ton cattle truck, \$1500. 717-732-4822

Knight TMR mixer. 24 tie stalls & drinking cups. 20' single chain conveyor. Vicon computer feeder. 814-328-5207

USED TANKS

2000 Gal. Mueller OH Nice!
2000 Gal. Zero
2000 Gal. Mueller OH
1500 Gal. Mueller OH
1500 Gal. Surge
1500 Gal. Sunset
700 Gal. Mueller OH
Hagerstown, MD
301-797-3921

1000 gallon Surge milk tank with two 3 H.P. compressors and wash system. Four Universal ATO portable milker units, 1-1/2" Surge glass pipeline with pump and receiver jar.

Two 24" barn fans, one 18" fan with hood and control
28 Jamesway tie comfort stalls

Roy Weaner
717/334-3376

Mueller 2000/gal. tank w/ compressor, excellent cond. (6) SSTII automatic take-offs. Dunning-View Farm 814-766-2944.

Patz shuttle feeder 70' per side, have 2, \$1000. 717/745-3344.

Rissler TMR feed cart \$1,250. Patz stainless steel barn cleaner, slide CCW, 16', \$550. (717)898-2530.

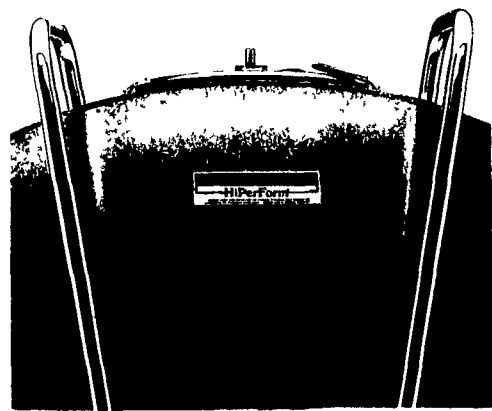
TMR mix wagon, Oswalt, model 320, w/scales SS bottom, good condition, \$2650 OBO. 301-447-2884

Used 190 Rissler portable mixer wagon, brand new heavy duty chain, \$5000. 717-665-7734

Used barn equipment: Patz barn cleaners, Badger bale chopper, Jamesway yoke stanchions, gates, water bowls, fans, etc. 717/865-4650.

HOW BIG A COOLER DO I REALLY NEED?

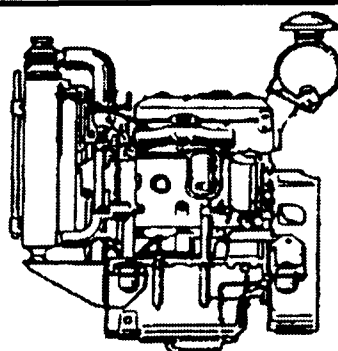
Depends on a lot of things. But one thing's certain Mueller makes the milk cooler that's right for your operation. And it's built to last. So it'll have high resale value the day you need a bigger cooler. For help deciding how big a milk cooler you need, contact your local Mueller dealer.



Martin's Refrigeration, Inc.

Phone (717) 352-2783 1122 Woodstock Rd
Sales & Service Fayetteville, PA 17522
MUELLER THE MILK COOLING SYSTEM SPECIALISTS

IVECO aifo - A Fiat Diesel Engine



You will find these diesel engines in tractors, fork lifts, cranes, farm equipment, etc. So why not try one for your dairy, shop or whatever your needs are.

Now a QUALITY Diesel engine with a lower price.

Also Distributor for



Charge Master Battery Chargers

HOOVER DIESEL SERVICE

Now 2 Locations

255 Mascot Rd., Ronks, PA 17572
(717) 656-3322 (717) 295-1729

362 Blackburn Rd., Quarryville, PA 17566
(717) 786-8839

NEW CONCRETE TANKS
Daniel E. Boller
PA 17540

IN GROUND MANURE STORAGE INSTALLATIONS



- ★ Underlayment between Liner and Earth
- ★ High Density Polyethylene (60 mil thick) Liner Guaranteed for 20 Years
- ★ More Economical than Concrete
- ★ Leak Detection System
- ★ Installed on site by our Certified Installers



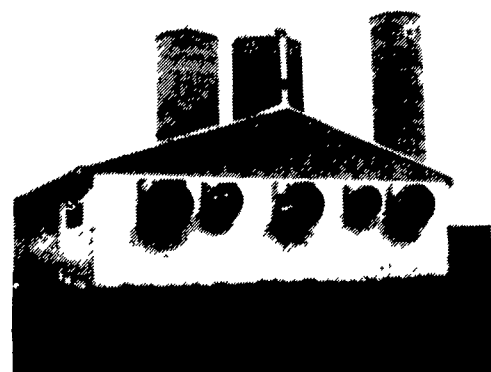
MANADA CONSTRUCTION CO.

LAND IMPROVEMENT & EXCAVATION CONTRACTORS
151 Meckville Road, Myerstown, PA 17067
717-933-8853 or 933-4062



The Power Behind Environmental Control

BreezeMaster



76 Cow Total Ventilation System - Denver, PA
Lapp's Barn Equipment can install a high-performance/high efficiency tunnel ventilation system in your barn. A tunnel ventilation system will give you an even air flow throughout your barn of 2-5 mph. This gives you the advantage of better controlling temperature to give your cows more comfort which means more milk!! Also, a tunnel ventilation system eliminates circulating fans, provides summer and winter ventilation and controls fly problems! An optional unit can even automate your ventilation so you will never even have to worry about it when you're not there, so you can concentrate on other things! At Lapp's, we sell high quality ventilation systems manufactured by Acme Engineering, Acme products feature such things as:

- Galvanized Construction
- Wide Cambered Propeller
- Riveted Blades
- Unique Captured Bearings
- Vertical Support Frame
- Screens Pre-cut
- Totally Enclosed Motors
- Optional Discharge Diffuser Cone
- Optional Belt Tightener

Call Jake or Nelson at:

LAPP'S BARN EQUIPMENT, INC.

5935 Old Philadelphia Pike, Gap, PA 17527

Phone: 717-442-8134

717-768-8301

WE SERVICE WHAT WE SELL

- Radio Dispatched Trucks -

Call Us For A Good Selection Of Milking Equipment - Priced Right!

- 65# Coburn Bucket \$165
- 4 Flo-Star Claws, rebuilt w/o w/out Shells
- 2" Surge Pipeline
- 2" Universal Pipeline
- (2) 7 1/2 HP. Air Lobe Pumps
- 2" Surge Receiver

We Ship Parts Daily UPS

24 HOUR SERVICE

ON THE FARM ROUTE SERVICE

Fisher & Thompson Inc.

DAIRY & MILKING EQUIPMENT SALES & SERVICE

Three Locations

MAIN OFFICE
15 NEWPORT RD
LEOLA, PA 17540
717-656-3307

MIFFLINBURG
SALES CENTER
RD 2 BOX 265
WABASH RD
MIFFLINBURG, PA 17844
717-966-3900

NORTHERN
SERVICE CENTER
3450 S. MAIN ST
BELLEVILLE, PA 17004
717-935-7422

Open Saturday 8 a.m. - Noon

