

D & R EQUIPMENT INC.

Rt. 579, Ringoes, New Jersey
(908) 782-5082

USED TRACTORS

JD 7700 MFWD, cab & air, power quad, sharp
JD 2555, MFWD, 1,200 hrs.
JD 2555, hi-low, sharp
JD 4450, MFWD, cab & air, sharp
JD 4250, cab & air, power shift, MFWD
JD 4250, quad, cab, air
JD 4840, cab & air
JD 4640, cab & air
JD 4240, cab & air, quad
JD 2940
JD 4230, fender
JD 2640, 1,500 original hrs.
JD 2750, MFWD, 13.6x46 rear tires, 13.6x38 front w/creeper
JD 2355, 4WD
JD 2155
JD 2150
JD 4620, powershift
JD 4320, open station
JD 4320 w/cab
JD 4020, diesel, power shift
JD 4020, diesel, syncro
JD 4010, diesel
JD 3020, gas, WF
JD 3020, diesel, WF
JD 970, 4WD, 60 hrs.
IH 2444
IH 1586, cab & air
IH 1086, cab & air
IH 1066
IH 986, cab, air, sharp
IH 504, diesel
MF 2705, cab & air, excellent
MF 35, power steering

USED PLOWS

IH Consortill 10'
JD 2500 5 btm 18" spring reset
White 6 btm. spring reset
AC 5 btm
JD 5 btm

USED COMBINES

444 JD corn heads
JD 643 corn head
JD 443 corn head
JD 7720, 4WD, 2,300 hrs., excellent
JD 6620, Hydro, 1983
JD 3300 w/2 row head

HAY EQUIPMENT

JD 336 baler w/thrower
JD 346 wire baler
JD 347 wire baler
JD 347 twine baler
JD 348 baler, excellent
NH 316 baler w/thrower, excellent
NH 320 baler
NH 630 round baler
NH 849 auto wrap round baler, sharp
NH Rake
NH 489 haybine
NH 488 haybine
NH 1033 stack wagon

MISCELLANEOUS

(3) Gravity Wagons
Gehl 7190 feeder wagon
Woods 9180 15' turf mower, like new
New Bush Hog Ditch Bank mower
IH 3800, hyd. fold disc, 20', rockflex, excellent
Taylorway 25' disc
Glenco soil finisher, 12'
18' IH field cultivator, hyd. fold
JD 7000 6R conservation planter, liq. insect., very good
Bush Hog Lilleston No-Till Grain Drill, Very Good
IH 2350 Loader
IH 2250 Loader
JD 148 loader, like new
JD 58 loader
Arps 105 3 pt. hitch backhoe, 10'
Brillion 5 Shank V-ripper, New
Unverferth gravity boxes on 10 ton running gear, 290 bu. NEW

LOADER TRACTORS

JD 4010 w/new Bush Hog 2845 ldr.
JD 2840 w/loader
JD 2350, 2WD, w/240 loader, 2,000 hrs.
MF 1085 w/loader

INDUSTRIAL

Ford CL45 diesel skid loader
Ford 340 w/loader, sharp
Oliver forklift
Gehl 4600 skid steer, very good

'85 GMC C-7000
w/26' Jerr-Dann Body, Air Brakes,
Air Tag Axle
'75 Chevy C65
w/24' Jerr-Dann Body, 5 Spd &
2 Spd. Rear

"Will buy JD tractors"

JD 4055 PS, 4x4 cab 1 owner nice	\$41,500
JD 4440 cab air QR trans, nice 1-own	SOLD \$21,500
JD 4440 cab, air 4x4 QR Trans, 2 hyd	\$20,000
JD 2355 ind PTO roll bar, 2600 hrs., nice	\$14,800
JD 2355 ind PTO, flat-top fenders, ong	\$13,700
JD 4240 4 post creeper trans., 2 hyd	\$13,500
JD 2950 hi lo, 2 hd, new tires, nice	SOLD \$13,500
JD 2155 turf tires, excellent condition	\$12,800
JD 2950 hi/lo, 2 hydraulics	\$12,500
JD 4320, 1972, overhauled, 1 owner	\$12,500
JD 2550 PTO, new paint, G tires, Exc	\$12,500
JD 2155 Diesel w/ dhuttle trans., sharp	\$12,400
JD 2140 75 hp same as JD 2750	\$11,900
Case 1845C late model, new tires	\$11,600
JD 2030 w/new loader & joy stick	\$11,000
JD 4230 QR trans, 4 post, original 1-owner	\$10,800
JD 2030 Diesel, w/JD 48 ldr, 4500 hrs	SOLD \$10,600
JD 2040 (2550) cab, ind PTO hi-lo	\$10,500
JD 2840 hi/lo, 2 hyd., 4800 hrs., gd cond	\$9,800
JD 2630 hi lo rack & pinton wheels, new tires, Sharp	\$9,300
JD 2040 S, 65 hp, 1986, same as 2550	\$9,200
JD 4020 SR trans, WF, good tires, wts	\$8,500
JD 4020, PS trans., 2 hyd., diff lock, overhauled	\$8,500
JD 3020 dsl, WF, like new, 18 4x34 tires	\$7,800
JD 2440 hi/lo, 2 hyd., 1 owner, 5140 hrs	\$7,500
JD 2130 Diesel, hi/lo, ind PTO, 65 hp, nice	\$7,300
MF 2200 diesel forklift	\$7,200
JD 1130, ind PTO, hi-low, 45 hp, nice	\$7,200
JD 2130 diesel, 65 hp 239 engine, new paint	\$7,100
JD 2020, hi/lo, ind PTO, nice condition	\$7,000
JD 2240, ind PTO, 38" R&P wheels	\$6,500
JD 1120 ind PTO, new paint, good	\$6,000
Case 870 PS Trans, Diesel, Fender Tractor	\$5,800
Case 530 diesel, w/loader pallet fork and bucket	\$3,800
Farmall H w/Recent Overhaul	\$1,500
JD factory WF for 3020 thru 4020, new	\$1,350
JD Yellow roof roll bar for 3020, 4020, new	\$950
JD 18 4x38 10 bolt axle duals for 3-5/8" axle	\$850
NEW, 5' 3 pt King Kutter mower.	\$790
JD factory cab 3020-4320	\$700
JD roll bar and roof off JD 2950..	SOLD \$600
JD green roof roll bar for 2555	SOLD \$600
JD Yellow roof roll bar, for any utility tract	SOLD \$600
Cozy factory cab off JD 2840	\$200
JD 4020 or 3020 toplinks brand new	\$165 ea.
Woods ldrs & snow blowers in stock	at 20% off

Zimmerman Elevators, Hay Tedders
Wagon Gears & Forage Wagons
Farmco Metal Feeder Wagons, Bale
Bodies & Country Boy Gravity Bins
JD Front & Rear Weights J&L Hay Savers

Reiff Farm Service

275 Goodhart Road, Shippensburg, PA 17257
Interstate 81, Exit 10. 174 East, Goodhart Rd Right
Financing & Trucking Available
Phone or Fax (717) 532-8601

Lancaster Farming, Saturday, April 11, 1998-C41

LATE MODEL SKID STEER LOADERS AT GREAT PRICES

1993 Bobcat 7753 - #509612838, 5778 hrs., aux. hyd, new tires, lights, fan, Kubota 46 HP Diesel.....\$10,900
New Holland 555 - #580144, fresh paint, Perkins diesel, big bucket, no aux. hydraulics.....\$7,900
1994 Mahto L1300 - #1254, Isuzu 40 HP, 61" bucket, 750 hours, good tires, lights.....\$6,500
1995 Case 1838 - #JAF0151284, aux. hyd., good tires, vg cond., lights.....\$14,000
1990 Bobcat 843 - #503734248, new tires, Isuzu diesel, 2611 hours, lights, auxiliary hydraulics.....\$11,750
1986 Bobcat 843 - #5026M22560, good cond., 3943 hrs., 56 HP Perkins, 68" bucket, auxiliary hyd., new tires, lights.....\$9,900
1991 Mustang 940 - #1426079, Yanmar Diesel, 1650 hrs., fresh paint, new tires, auxiliary hydraulics, lights.....\$10,500
1990 Case 1845C - #JAF0041884, aux. hyd., fresh paint, good tires, 2460 hrs., lights.....\$12,800
1993 Bobcat 743B - #509321179, aux. hyd, good tires, 2023 hrs., lights.....\$10,650
1994 Bobcat 753 #512719314, good tires, 1492 hrs., lights.....\$13,500
1996 Bobcat 751 - #514711705, aux. hyd., very good tires, 811 hrs., lights ZERO HOURS ON NEW ENGINE - With new engine warranty until 3/99.....\$15,900
1996 Bobcat 751 - #514711946, new tires, aux. hyd., 747 hrs., lights.....\$14,100

CALL 717-784-1206
THE SKID STEER RANCH
Bloomsburg, PA

OTTITAN

We're in your field to stay



Titan Hi-Traction Lug Radial R-1

16.9R38★★.....	\$545.00
18.4R34★.....	\$495.00
18.4R38★.....	\$500.00
18.4R38★★.....	\$560.00
18.4R42★★.....	\$610.00
18.4R46★★★.....	\$895.00
20.8R38★.....	\$645.00
20.8R38★★.....	\$765.00
20.8R42★★.....	\$755.00

CALL FOR SIZES AND PLY'S NOT LISTED



Titan Industrial

16.9-24 10 ply.....	\$298
16.9-28 8 ply.....	\$255
17.5L-24 8 ply.....	\$260
17.5L-24 10 ply....	\$300
19.5L-24 10 ply....	\$375
19.5L-24 12 ply....	\$445
21L-24 10 ply.....	\$435
21L-24 12 ply.....	\$495

LOADER DOZER L-2'S IN STOCK CALL FOR PRICES



Titan Trac-Loader

10x16.5 6 ply	\$78.00
12-16.5 8 ply	\$103.00
23-8.50-12 6 ply	\$60.00
27-8.50-15 6 ply	\$65.00
27-10 50-15 6 ply	\$75.00

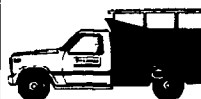


Titan HD 2000

10-16.5 8 ply	\$105.00
12-16.5 10 ply	\$155.00

MAR-BAR TIRE SERVICE

4285 Hanover Rd. (Rt. 116), Hanover, PA 17331
(717) 633-6412



IN-THE-FIELD FARM TIRE SERVICE

Serving Farmers in Adams, York, Carroll and surrounding counties for over 10 years



DEUTZ Like Never Before

Meet the World's Most Advanced Line of Industrial Diesel Engines

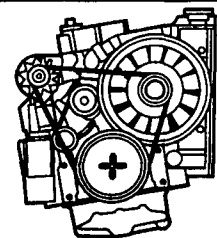


Deutz FL-912/913 Air Cooled

THE LEGEND - Stubbornly reliable - known survivors. Field repairable. Unmatched portability. Redesigned for more power. They just get better and better. **35-175 Hp**

Deutz FL-1011F Oil/Air Cooled

SMALLER - SMOOTHER - QUIETER. Eight years of evolution keeps improving the lead. Outstanding array of accessories make this series exceptionally adaptable. Sold extensively to the construction industry. **20-75 Hp**

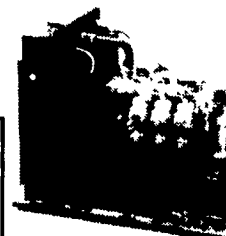


Deutz FM1012/1013 Liquid Cooled

CLEAN - QUIET - PROVEN. Extremely fuel efficient. Designed from the ground up to meet all proposed emissions standards. Available with Integrated radiator or conventional radiator. **75-235 HP**

Deutz FM1015 Liquid Cooled

BIG - CLEAN - QUIET. Extremely fuel efficient. Compact V-design. Big engine feature; individual cylinder heads, 4-valves per cylinder. Deutz Quality at a competitive price. **276-608 HP**



All Deutz engines EPA certified for Off-Highway duty.

Check our low price program engines:
• 912 Blue Line Diesels
• 913 Orange Line Diesels

Call For The Name of Your Nearest Deutz Dealer



Stauffer Diesel Inc.

Ephrata, PA 17522 PH: (717) 738-2500
Branch Office: Irwin, PA (412) 864-6969 (Pittsburgh Area)