



TANCO

**0% APR for 24 Month w/10% Down
With Your Good Credit!**

I Can Talk A Lot About Tanco Wrappers We've Sold For The Last 8 Years, But The Best Way I Can Put It - Not Buying A Tanco Wrapper Is a Lot Like Not Buying a Holstein Cow To Milk!

**NORTHEAST DISTRIBUTORS
& EQUIPMENT**

Rt. 106, W. Clifford, PA 18413

(717) 222-9090 (717) 222-9020

CASE III

NEW TRACTORS & EQUIPMENT

- | | |
|-------------------------|--------------------------------|
| Case-1845C Uni-Loader | Case-IH 1260 Grinder Mixer |
| Case-IH 4210 2WD & ROPS | Case-IH 8420 Round Baler |
| Case-IH 2250 Loader | Case-IH 8309 Disc Mow/con |
| Case-IH 600 Blower | Case-IH 8340 Mower Conditioner |
| Case IH 955 6R Planter | Case-IH 3850 12' Disk |

USED TRACTORS & EQUIPMENT

- | | | | |
|----------------------------------|----------|-----------------------------|---------|
| Ferguson 30 Tractor w/Ldr | \$3,500 | Case IH 900 4RN Air Planter | \$9,000 |
| Kubota B-6100, hydro, 2WD, w/mwr | \$4,250 | (less than 200 A) | |
| AC C Tractor (1941) | \$1,250 | IH 5100 20x6 Drill | \$4,500 |
| Case 1845 C Unloader New Engine | | IH 800 4RW Plate Planter | \$4,500 |
| Tires & Pump | \$15,000 | NH 520 Spreader w/Gate | \$1,650 |
| Case 1840 Uni-loader | \$13,500 | Gehl MX120, Grinder Mixer | \$2,850 |
| IH 710 5F 16" Plow w/Cyl | \$1,350 | JD 60H Forage Blower | \$400 |
| NH 30 Forage Blower | \$950 | NH 27 Forage Blower | \$750 |
| Gehl BU 910 Forage Wagon | \$1,600 | IH 35 Hay Rake | \$1,150 |
| IH 560 6F 16" Plow | \$750 | IH 435 Baler w/Thrower | \$2,500 |

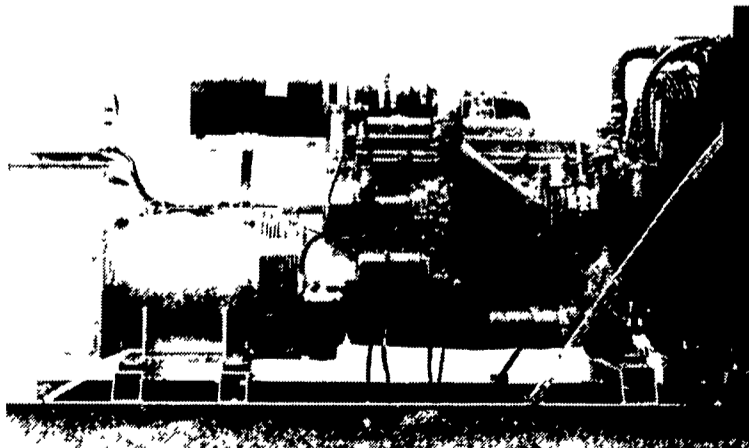
**MIFFLINBURG
FARM SUPPLY, INC.**

Route 45 East, Mifflinburg, PA 17844
Phone: (717) 966-3114
Evenings - 717-524-2924 - Frank Saner

© 1998 CASE CORPORATION
Visit us on the Internet at <http://www.casecorp.com>
Case IH is a registered trademark of Case Corporation

CASE III

GENERATORS



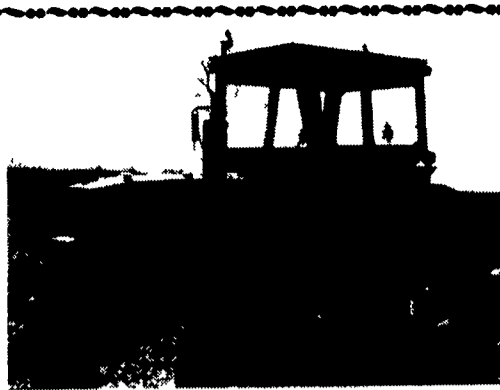
**MARTIN ELECTRIC PLANTS • Manufacturer of:
DIESEL, LP GAS, NATURAL GAS, PTO
Automatic & Manual Start Systems
USED UNITS ALSO AVAILABLE**

Call Us For All Your Generator Needs!

MARTIN ELECTRIC PLANTS

280 Pleasant Valley Rd., Ephrata, PA 17522-8620
800-713-7968

Tel: 717-733-7968 Fax: 717-733-1981



JD 1972 4020, WF., 1200 Orig. Hrs., Cab. Int., AM/FM, Dual Remote, Syncro Shift, New Front Tires, Orig. Owner

\$18,500 ONLY ONE LIKE IT

Snow Blower Magee Front Mount, 7 1/2', New Condition, Mounts On JD 4020 With Front PTO

\$5,500

717-432-3235



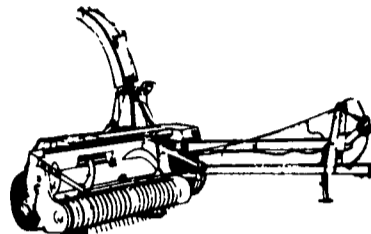
JD 4560 TRACTOR

2WD, Deluxe Cab, 155 hp, 1992 Triple remotes & quick hitch, 20.8x42 rear tires, 1 owner, 1014 hrs.

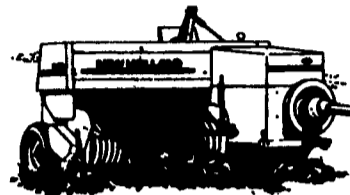
\$45,900.00

WHITESEL BROTHERS, INC.

Harrisonburg, VA
540/434-1707



NEW HOLLAND



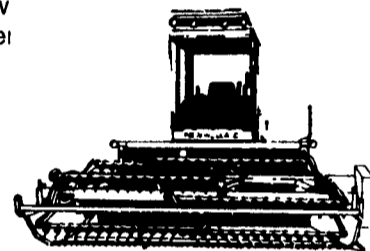
FREE FINANCING

NH Hay & Forage til 1/1/99

- NH LX 565 Skid Loader
- NH 28 Blower
- NH 185
- NH 254 Rake, Demo

- NH 456 Mower
- NH LX465 Skid Loader
- NH 616 Disc Mow
- NH 790 Harvester

- CALL FOR PRICES -



Hay & Forage Equipment - Call For Finance Rates

DEPENDABLE MOTOR CO.

East Main St., Honey Brook, PA.

(610)273-3131 or (610)273-3737

J.L. HOLLINGER & SONS INC.

RT. 72N, Manheim, PA.

717-664-2444 8 AM To 6 PM

717-665-2354 After 6 PM

NEW & USED Farm & Construction Equip.

FAX 717-664-2835



1989 Dresser 200 4 in 1
ROPS, V Good Cond
\$32,500

**SALES
SERVICE
RENTAL**



'93 Case 9020 LC,
Very Good Condition
\$55,000

BACKHOES

- | | |
|--|----------|
| JD 310C 2WD, Cab, Ext Hoe | \$18,500 |
| '86 Case 580 SE, 2x4, EROPS, Standard | \$15,500 |
| '87 Case 580K 2WD, EROPS, Ext Hoe | \$18,000 |
| '96 Case 580 LXT, 3 pt. Cab | \$35,000 |
| '92 Case 580 SK, 4WD, EROPS, Ext Hoe | \$33,000 |
| 94 Cat 416B, 4WD, EROPS, Ext Hoe | \$35,500 |
| 89 Case 580K, 4WD, EROPS, Standard Hoe | \$26,500 |
| 94 Case 580SK Turbo, 4x4, Ext Hoe | \$39,000 |
| '87 Case 580-SE, 4x4, Ex-Hoe, Cab, New Tires | \$25,500 |

WHEEL LOADERS

- | | |
|--|----------|
| Cat 910E | \$31,000 |
| Case W-14, EROPS, GP Bkt | \$18,500 |
| JD 444E RTL | \$38,500 |
| Komatsu WA-350 | \$38,500 |
| '80 CAT 920, EROPS, G P Bucket | \$25,000 |
| '90 Cat IT 18B, EROPS, Coupler w/Forks | \$45,000 |
| 91 Cat 918F, EROPS, V Good Cond | \$46,000 |

SKID LOADERS

- | | |
|------------------------------------|----------|
| JD 8875 | \$16,500 |
| '89 NH L-785 | \$13,500 |
| NH L-555 | \$12,500 |
| '94 Case 1840, DSL, QTACH, Aux Hyd | \$14,900 |
| '92 NH L-555 Diesel, Ayx Hyd | \$13,000 |

FORKLIFTS

International 4500B, 14' Mast, DSL **CALL**

EXCAVATORS

- | | |
|---------------------------|-------------|
| (2) JD 595D | CALL |
| Kobelco K905 LC II | \$35,000 |
| Komatsu PC120 3 LC | \$35,000 |
| Hitachi EX100 | \$29,000 |
| '93 Case 9020, 36' Bucket | \$55,000 |

CRAWLERS

- | | |
|---|----------|
| JD 855 Crawler/Ldr | \$25,500 |
| Cat 953 LGP, Canopy, GP Bkt. | Call |
| Cat 951C, OROPS, GP Bkt | \$16,500 |
| Leibherr 711 CT-6-Way Blade | \$22,500 |
| Komatsu D-31E's | \$18,500 |
| 86 CAT D3B, ROPS, 6 Way | \$23,000 |
| '84 CAT 963 ROPS, G P Bucket | \$45,000 |
| 93 Case 550E Long Track, 6 Way | \$39,000 |
| 90 Dresser 200 4N1 Bucket, Very Good | \$35,000 |
| '88 John Deere 850B Long Track, EROPS, S/T, Blade, New Engine w/Winch | \$45,000 |

MISCELLANEOUS

- | | |
|---------------------------------|---------|
| Ford 710 Leaf Loader w/Ford Dsl | \$6,000 |
| Beck Skid Loader, Tri | \$1,900 |
| Bobcat Hammer, Model 2500 | \$2,900 |

Daily — Weekly — Monthly Rentals