



**Phila. Vegetable**

**PHILADELPHIA Terminal**

Prices as of 08-APR-98

Provided by: Fruit and Vegetable Market News, Federal-State Market News Service, USDA.

Phone: (215) 597-4536 Fax: (215) 336-0355

CLOUDY 51-65  
NA-FV020

**VEGETABLES ---ARTICHOKES:** MARKET ABOUT STEADY ctns CA 18s 18.00 few 20.00 24s 18.00 few 20.00 fair qual 8.00-9.00 36s 16.00 fair qual 10.00-11.00 sml lse few 20.00 MX 24s 12.00-15.00 30s 12.00-15.00 ---**ASPARAGUS:** MARKET ABOUT STEADY pyr ctns/crts 28 lb bchd CA exlge 38.00-40.00 fair cond 33.00-36.00 lge 38.00-40.00 fair cond 25.00-36.00 std 38.00-40.00 sml 38.00-40.00 Long Green lge 40.00 MX exlge fair cond 33.00-36.00 lge 45.00 fair cond 33.00-36.00 std fair cond 33.00-36.00 sml fair cond 28.00-30.00 pyr crts bchd NJ fldrun 38.00-40.00 11 lb ctns/crts bchd CB lge 19.00-20.00 std 19.00-20.00 ---**BEANS:** MARKET LOWER buctns/crts FL Round Green Type 16.00-18.00 some 15.00 ---**BEETS:** MARKET STEADY ctns bchd TX 12s 9.00-10.00 25 lb sks lse TX med 7.00-8.00 ---**BROCCOLI:** MARKET ABOUT STEADY ctns CA bchd 14s 9.00-11.00 mostly 10.00 few 11.50-12.00 fair cond 6.50 bchd 18s 10.00 20 lb ctns lse CA Crown Cut 13.00 few 16.00 ---**BRUSSELS SPROUTS:** 25 lb ctns MX few 13.00 ---**CABBAGE:** MARKET ABOUT STEADY 1 3/4 bucrts & 50 lb ctns CD Round Green Type med fair cond 5.00-6.00 FL Round Green Type med 7.00-8.00 Red Type med 10.00-12.00 mostly 11.00 few 14.00 ord cond 5.00 TX Round Green Type med 8.00-9.00 mostly 8.00 ord cond 3.00-4.00 Red Type med ord cond 5.00-6.00 50 lb sks NY Round Green Type lge 7.00-8.00 mostly 7.50 45 lb ctns AZ Round Green Type med-lge 9.00 1 3/4 bucrts & 40 lb ctns FL Savoy Type med-lge 12.00 ---**CARROTS:** MARKET ABOUT STEADY sks 48 1-lb flmbgs CA Topped med-lge 10.50-12.00 mostly 11.00-11.50 fair cond 8.00 FL Topped med-lge 9.00-10.00 sks 24 2-lb flmbgs CA

Topped med-lge 11.00-11.50 sks 16 3-lb flmbgs CA Topped med-lge 11.00-11.50 sks 10 5-lb flmbgs CA Topped med-lge 11.00-12.00 50 lb sks lse CA Topped jbo 11.00-14.00 few 15.00 CD Topped jbo 8.00-9.00 FL Topped jbo 9.00-9.50 GA Topped jbo few 11.50 ctns bchd CA Bunched 24s 11.00 ctns 24 1-lb flmbgs CA Baby Peeled 16.50-18.50 ctns 20 1-lb flmbgs CA Baby Peeled 13.00-15.00 ctns 4 5-lb flmbgs CA Baby Peeled 13.00 ---**CAULIFLOWER:** MARKET SLIGHTLY HIGHER ctns flmwrpd CA 12s 18.00-20.00 mostly 18.00 few 16.00 fair cond 8.00-14.00 9s 18.00 fair cond 8.00-9.00 ---**CELERY:** MARKET SLIGHTLY LOWER ctns CA 1 1/2 dz 13.00 2 dz 14.00-15.00 mostly 14.00 few 13.00 few 16.00 2 1/2 dz 14.00-16.00 mostly 15.00 3 dz fair cond 12.00-13.00 flmbgs 30s few 15.00-16.00, FLMB 36s few 15.00 FL 2 dz 14.00 2 1/2 dz 13.00-14.00 3 dz few 14.00 TX 2 dz 13.00 ctns flmbgs FL Hearts 24s 11.00 ---**CHINESE CABBAGE:** MARKET ABOUT STEADY celcrts FL few 14.00-15.00 30 lb ctns CA Nappa 13.00 ---**CORN-SWEET:** MARKET ABOUT STEADY wbcrts FL Yellow 4 dz min 14.00 White 4 dz min 14.00-16.00 mostly 15.00 ---**CUCUMBERS:** MARKET ABOUT STEADY WAXED 1 1/9 bucrts/crts FL med fr qual 12.00 HD med fair cond 10.00 MX med fr qual 16.00 fair cond 10.00-14.00, ord qual 10.00 ---**EGGPLANT:** OFFERINGS LIGHT 1 1/9 bucrts wrpd FL med fair cond 12.00 fair qual and cond 5.00 ctns/crts wrpd MX 18s 17.00 11 lb ctns NL Italian 19.50 ---**ENDIVE:** MARKET HIGHER 1 1/9 bucrts/crts FL 9.00 ---**ESCAROLE:** MARKET HIGHER 1 1/9 bucrts/crts FL 9.00 ---**GARLIC:** MARKET HIGHER 30 lb ctns CA White super col 36.00 fair appear 29.00 col 33.00 fair appear 26.00 super jbo 30.00 fair appear 24.00 exjbo 28.50 fair appear 22.00 jbo fair appear 19.00 22 lb ctns/crts AG White exjbo 20.00 ---**GREENS:** MARKET ABOUT STEADY ctns bchd AZ Kale 24s 11.00 CA Kale 24s 11.00 Swiss Chard 12s 12.00 Red 12s 12.00 ctns/crts bchd GA Collard 24s 8.00 Kale 24s 10.00 fair qual 7.00-8.00 NC Collard 8.00 fair qual 6.00-7.00 Rape 10.00 N Kale 10.00 Dandelion 24s 12.00 ctns lse CA Kale Flowering 24s 20.00 few

16.00 20 lb ctns MX Broccoli Rabe 24s fair cond 10.00-12.00 ---**LETTUCE-ICEBERG:** MARKET HIGHER ctns AZ 24s 18.00-20.00 Wrapped 24s 22.00 ord cond 6.00-8.00 30s ord cond 5.00-6.00 CA 24s 18.00-22.00 mostly 20.00 fair cond 17.00 Wrapped 24s 20.00-22.00 fair cond 16.00-18.00 ---**LETTUCE-OTHER:** MARKET HIGHER ctns AZ Green Leaf 24s 18.00-22.00 occ high as 24.00 Red Leaf 24s 20.00 CA Boston 24s 20.00 fair cond 15.00 Green Leaf 24s 20.00-22.00 few 18.00 Red Leaf 24s 20.00-22.00 FL Bibb 24s 8.00 ctns/crts FL Green Leaf 24s 11.00-12.00 Red Leaf 24s 11.00-12.00 3 lb ctns CA Mesculin Mix 9.00-10.00 ---**LETTUCE-ROMAINE:** MARKET HIGHER ctns AZ 24s 15.00-20.00 mostly 18.00 CA 24s 18.00-20.00 some low as 15.00 fair cond 14.00 1.3 bucrts CA 24s 19.00 ---**MUSHROOMS:** MARKET STEADY 10 lb ctns PA lge 11.50-12.50 mostly 12.00 med 8.50-9.50 mostly 8.50-9.00 4 qt bkts PA med-lge 5.00-5.50 mostly 5.00 sml-med 4.00-4.50 mostly 4.00 5 lb ctns PA Cremini 7.00 Portobellas 6.00-7.50 3 lb ctns PA Shiitake 11.00-13.00 fair qual 9.00-10.50 ctns 12 8-oz trays flmwrpd PA 8.00 ctns 10 12-oz trays flmwrpd PA 8.50-9.00 ctns 10 10-oz trays flmwrpd PA 7.50-8.00 mostly 8.00 ---**OKRA:** OFFERINGS INSUFFICIENT TO QUOTE ---**ONIONS GREEN:** MARKET LEEKS ABOUT STEADY, OTHERS SLIGHTLY HIGHER ctns bchd MX 48s 8.00-10.00 mostly 9.00-10.00 ctns/crts bchd AZ Leeks 12s 10.00 CA Leeks 12s 11.00 NJ Leeks 12s 10.00-12.00 TX Leeks 12s 12.00 ---**PARSLEY:** MARKET ABOUT STEADY ctns bchd AZ Curly 60s 9.50 Plain 60s 10.00 TX Curly 60s 11.00 Plain 60s 11.00 ---**PARSNIPS:** TOO FEW SALES TO QUOTE ---**PEAS GREEN:** MARKET LOWER 10 lb ctns GU Snow Peas Decalaxed 10.00-12.00 mostly 10.00-11.00 fair cond low as 7.00 MX Snow Peas Decalaxed 13.50 GU Sugar Snap Peas Decalaxed 13.00 fair cond low as 10.00 ---**PEAS OTHER:** OFFERINGS INSUFFICIENT TO QUOTE ---**PEPPERS:** MARKET ABOUT STEADY 1 1/9 bucrts/crts FL Bell Type Green exlge 24.00 lge 20.00-22.00 fair appear 17.00-18.00 med fair appear 15.00-16.00

**Some Markets Not Available Due To Early Press Deadlines**

fair cond 11.00-13.00 vyzml fair qual 8.00-10.00 Mxd Red And Green lge 13.00-16.00 med 13.00-14.00 MX Bell Type Green lge fair appear 18.00 med 20.00 15 lb ct's MX Bell Type Red exlge 26.00 Yellow exlge 26.00 5 kg ctns NL Bell Type Orange 70-90mm 30.00 Red 70-90mm 28.00 80-100mm 29.00 Yellow 70-90mm 27.00-29.00 ---**PEPPERS OTHER:** OFFERINGS INSUFFICIENT TO QUOTE ---**RADISHES:** MARKET ABOUT STEADY ctns tpd 30 6-oz flmbgs FL Red 6.00-7.00 mostly 7.00 ctns tpd 14 1-lb flmbgs FL Red 7.50 ---**RHUBARB:** OFFERINGS INSUFFICIENT TO QUOTE ---**RUTABAGAS:** 50 lb ctns CD CDOne med 6.00-8.00 ---**SPINACH:** MARKET ABOUT STEADY 1 2/5 bucrts bchd CA Flat 24s 16.00 ctns 4 2.5-lb flmbgs CA Flat 16.50 ctns NC Savoy 9.00-10.00 mostly 10.00 cel crt NJ Savoy 11.00 fair qual 8.00 ---**SQUASH:** MARKET ABOUT STEADY 1/2 & 5/9 bucrts/crts FL Zucchini sml-med 9.00 Yellow Straightneck sml-med 20.00 fair cond 12.00 ctns/lugs MX Zucchini sml-med 10.00-11.00 mostly 10.00 med 8.00-9.00 mostly 8.00 ---**SWEET POTATOES:** MARKET ABOUT STEADY CURED 40 lb ctns NC U.S. One Jewels med 11.00 fair qual 6.00 jbo 6.00-7.00 ---**TOMATOES:** MARKET SLIGHTLY LOWER 25 lb ctns FL Vine Ripes pink-light red 5x6s 12.00-15.00 U.S. Comb or Better Mature Greens pink-light red 5x6s 12.00-14.00 mostly 13.00-14.00 fair cond 8.00-10.00 fair qual 10.00-12.00 6x6s 11.00-12.00 some incl fair qual 10.00 red fair cond 5.00-7.00 red 6x7s poor cond 1.00-2.00 Local Repack 85% U.S. One or Better Mature Greens pink-light red 5x6s 17.00 6x6s 16.00 6x7s 14.00 flts 2 lyr MX Vine

Ripes light-red 4x5s 13.00 5x5s 11.00 5x6s 9.00 5 kg flts NL Vine Ripes red med 20.00 (clusters) 7 kg flts NL Vine Ripes red 82-102mm 22.00 ---**TOMATOES, CHERRY:** MARKET ABOUT STEADY flts 12 1-pt bkts FL light-red 8.00-9.00 few 10.00 Red fair cond 5.00-6.00 MX light-red 9.00-10.00 red 8.00 fair cond 7.00 ---**TOMATOES, PLUM TYPE:** MARKET LOWER 25 lb ctns FL light red-red 10.00-12.00 few 13.00-13.50 MX light red-red 9.00-11.00 mostly 10.00 ---**TURNIPS:** 25 lb sks NJ Purple Top med 6.00-7.00

**Leola Produce Auction**

Leola, PA

April 7, 1998

Report Supplied by Auction

**ASPARAGUS:** 1.50-2.25 12 OZ. BUNCH.  
**ONIONS:** SPRING 14.00-18.50 40 CT. BUNCH.  
**RADISHES:** 5.50-10.50 20 CT. BUNCH.  
**SPINACH:** 8.50-14.50 BU.  
**POTATOES:** GREENHOUSE 16.00-24.50 25 LBS.  
**BEDDING PLANTS:** ANNUALS 4.00-7.50 FLAT; PERENNIALS 6.00-9.50 FLAT.  
**POTTED PLANTS:** 4" 45-1.10.  
**PLANTERS:** 2.75-11.75 ASSORTED SIZES.  
NEXT WEEK'S SALE DAYS TUES. AND THURS., 10 A.M.



**Taste the trail.**



**Xpress 300**

- 300 2-stroke, air-cooled, oil-injected engine
- Exclusive, long-travel rear suspension (8.5 inches)
- Rear gas shock
- Tight-turning MacPherson strut front suspension
- Automatic transmission
- Single-lever hydraulic disc brakes

**POLARIS**  
RIDE THE BEST

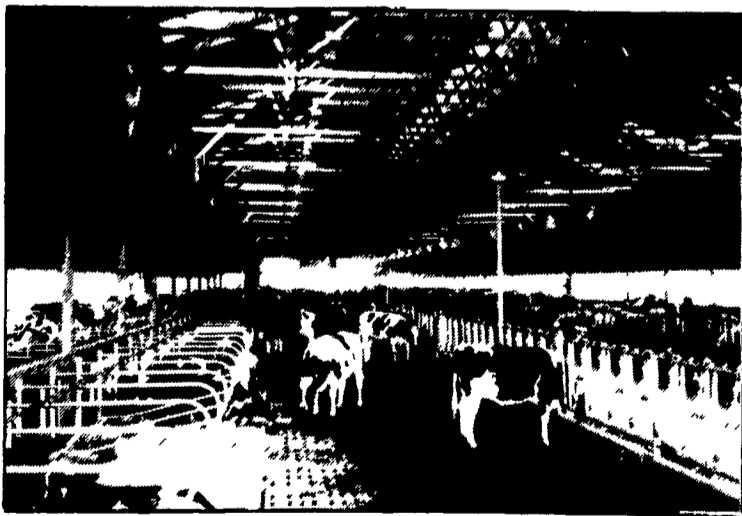
**J & H Cycle Accessories, Inc.**

717-653-5672

1090 W. Main St., Mount Joy, PA 17552

Polaris ATV's may not be ridden by anyone under 18 and all riders should take a safety course. For safety and training information see your dealer or Polaris at 1 800-342-3764. ATV's can be hazardous to operate. For your safety always wear a helmet, eye protection, protective clothing and never carry passengers. © 1997 Polaris Industries Inc.

**Concrete Slatted Free Stall Barns**



The concrete slat with your animals comfort in mind. A large percentage of openings keep animals clean & dry.

**Other Products**

- H & J Bunks
- Hog & Cattle Slats
- Bunker Silos
- Concrete Post & Beams
- Concrete Gutters

Give us a call for more information on hog, beef, dairy and heifer barns.



477 EAST FARMERSVILLE RD.  
NEW HOLLAND, PA 17557

**(717) 355-2361**



**Spring Nursery, Produce and Greenhouse Flower AUCTION**



**TUESDAY & THURSDAY**

10 AM to ???



- Flower Coming In Strong
- Many Apples & Potatoes Coming Out Of Storage

**Call 717-532-5511 FOR ADDITIONAL INFORMATION**



**Leinbach Produce Auction**

(1 Mile North of Shippensburg)

1120 Ritner Hwy., Route 11

Shippensburg, PA 17257