

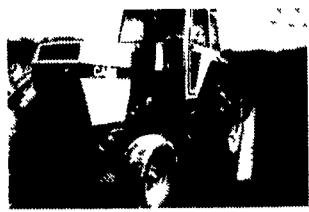
Quality Hay Equipment: NH 326 baler/th, NH 311 baler/th, Deutz 20' rake, NH 258 rake, NI 406 hyd. rake, 7 bale wagons, 2 tedders, Case IH 8830 SP haybine only 165 hrs, NH 855, NH 849 round balers. Every piece in exceptional condition. Always housed. Zeisloft Used Eq., Bloomsburg, PA (Col. Co.) 800/919-3322.

STEEL HAY WAGON BOXES with removeable pipe sides. Custom built to your needs. Also, sides to bolt to your wooden bed. ELIMSPORT WELDING SHOP, (717)547-2476, or call toll free 1(888)462-4124.

Steel wheels w/rubber shocks for 4WD 586E Case forklift; 6414T JD power unit w/air starter; 3 1/2 hp slow speed Lister diesel for parts. 717/535-5711.

TRACTOR PARTS & REPAIRS... Engine kits, clutch kits, engine tune-up kits, trans & PTO parts, starters and alternators, new/used & rebuilt parts. Engine rebuilding, trans & hydraulic repairing. Excellent pricing. GERBER FARM REPAIR, RD 2, Sunbury. 717-286-7851

Case 2090, 1979, 4400 hrs., 18.4x38 tires, no weights, cab, air, very nice tractor, needs power shift work \$6,250 w/duals \$6,750



GOODRICH TRACTOR PARTS

Rt. 38 & 38B Newark Valley NY 607-642-3293

Diesel and Electronic Fuel Injection Specialists

AMBAC BOSCH Cummins STANADYNE C.A.V. Caterpillar

CENTRAL PENN PUMP CO.
2700 Cumberland St. Lebanon, PA 17046 717-274-0665

Wit-Lane
717-369-5319
Many Sizes New & Used Liquid or Dry Storage Tanks Available! U.L. Labels on New Tanks. Custom Manufactured to Your Needs!

- White Model 2-135 Tractor with cab, air and heat, 20.8-38 rear tires 90% completely rebuilt over - under power shift. new motor bearings and rebuilt front end, new paint..... **\$16,000**
 - Clark Model 6-20 Forklift, hard tires, LP gas, 2 stage mast, side shift and new paint **\$2,500**
 - Meyers Trailer Air-Blast Sprayer, PTO driven, new 500 gallon tank, set up for high clearance vegetable use..... **\$1,500**
 - Ford Model 7700 Tractor, dual power, 3 pt hitch, triple remotes, 18.4-34 tires 75% tread, 4143 hours. good condition. **\$12,000**
- CALL 717-587-1725**

1992 7110 Magnum, FWD, 2,662 hrs.
1982 FMC Multi-row green bean harvester
Baur hard hose irrigation, 950'
—All Shed Kept & Excellent—
(609) 935-0348

N.I. 802 Uni., Cab & Air, 4x4, 1195 Hrs., Nice
\$12,600
717-733-7408

TOBIAS EQUIPMENT CO., INC.
Halifax, PA 17032
Phone: 717-362-3132
1-800-362-3132

- CLEARANCE SPECIALS**
- IH 544 Row Crop Tractors..... **\$7,200**
 - JD 1520 gas w/Loader..... **Coming In**
 - JD 955 w/Loader, 375 Hrs..... **Call**
 - White 105, Cab..... **\$6,500**
 - Ferguson T0-20..... **\$2,000**
 - 1720 Ford SS MFWD w/Loader & Backhoe, 500 Hrs..... **\$18,200**
 - JD 6200 MFWD, Open Station, P.Q. Trans, R&P axle, radial tires, 450 hrs..... **\$32,000**

New H&S 16' 3 beater forage box on 12-ton running gear..... **\$9,500**

- USED GARDEN TRACTORS**
- JD 325 48" Mower, 1 Year Old..... **\$4,500**
 - JD 445, Low Hours, New 60" Mower..... **CALL**
 - JD240, 46" Mower w/Bagger..... **\$2,800**
 - Ford LS45..... **\$2,500**
 - JD 212 w/47" Mower..... **\$2,000**
 - Snapper LX130H w/Bagger, Low Hrs..... **\$1,875**
 - JD 170 w/ 38" mower..... **\$1,995**
 - Kwik Way loader for JD 400 series garden tractor, new condition..... **\$2,300**

- USED COMBINES**
- JD 6620 Side Hill, 215 Flex Head **\$27,000**
 - 1996 JD 9500 Contour Master, 4WD, 160 Separator Hrs, Factory Warranty **Call**

- SPRING CLEARANCE SALE**
- IH Model 700 5x18 plow, Side Hill Hitch..... **\$2,700**
 - Unverferth 375 bu. Gravity Box on 14-ton Running Gear, New Condition..... **\$3,975**
 - 40' Bale Elevator..... **\$650**
 - 30' Bale Elevator..... **\$450**
 - Wu's 4x4 Cart..... **\$2,600**
 - Yale Electric Forklift, 12' Reach w/Charger..... **\$895**
 - IH 14' Chisel Plow..... **\$1,350**
 - JD 14' Disc, like new blades..... **\$1,250**
 - JD KBA, 13' Disc..... **\$1,550**
 - NH 16' Forage Box w/Tandem running gear, 3 beaters & roof..... **\$3,500**
 - JD 1360 Discbine..... **Coming In**
 - NH 499 Hydra Swing..... **Coming In**
 - NH 469 Haybine..... **\$1,750**
 - JD 920 MoCo..... **\$12,000**
 - JD 1600 12' Hydra Swing Mower Conditioner w/new Roll..... **\$7,500**
 - JD 1209 Mower Conditioner..... **\$1,750**
 - JD 1219 Mower Conditioner..... **\$4,500**
 - JD 8250 10' Drill..... **\$2,975**
 - JD 8300 21x7 Drill..... **\$5,800**
 - (2) JD 6534 Row Crop Heads..... **\$2,000/pair**

- MISCELLANEOUS - USED**
- JD 960 24' Flex Fold Field Cultivator w/Tine Attachment..... **\$8,500**
 - JD 450 Spreader..... **\$4,000**
 - Woods Model 315 15' Batwing Mower... **\$5,750**
 - JD 535 Round Baler..... **\$13,500**
 - NI 555 Baler w/Ejector..... **\$3,000**
 - NH 271 Baler w/ Thrower..... **\$2,200**
 - JD 336 Baler w/ ejector..... **\$3,500**
 - JD 875 4R Minimum Till Cultivator, Like New... **\$3,850**
 - Cat D6B Dozer, 10' Blade, Power Tilt & Winch..... **\$6,500**

- APRIL SPECIALS**
- New Landpride 1550 Tiller..... **\$1,675**
 - Ford 60" 3 pt. flail mower, never used... **\$2,300**
 - Landpride 48" Over Seeder..... **\$5,800 \$4,000**

READING KUBOTA

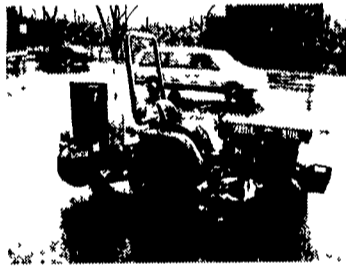
RD #2 Box 2008, Reading, PA 19605
Along Rt. 61, 3 Miles North Of Reading

Phone (610) 926-2441

Hours: Monday - Friday 8-5; Saturday 8-Noon; Sunday Closed

Kubota TRACTORS & EQUIPMENT

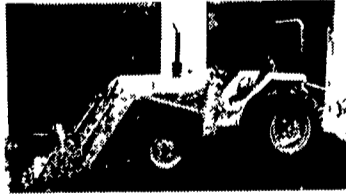
- USED COMPACT TRACTORS • USED SKID LOADERS
- REAR BLADES • BACKHOES • LOADERS



KUBOTA 4200 TRACTOR
w/Trac Vac, 375 Hrs, Excellent Condition



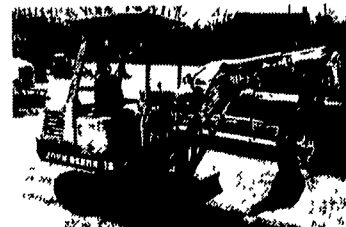
KUBOTA B7100
w/Loader, 307 Hours, Turf Tines, Excellent Tires



KUBOTA L2850 4x4 w/Loader,
1,450 Hrs Engine Just Rebuilt, \$14,000 FIRM



KUBOTA L3750 4x4
w/Loader, Fresh Paint, Ex Cond



JOHN DEERE 15
Excavator

Don't Miss Our **GRAND REOPENING** SAT., APRIL 25, 8 TO 5
Rain or Shine
★ FREE FOOD ★ PARTS DISCOUNTS
★ FACTORY REPS ★ TRACTOR DEMOS
DOOR PRIZES

USED 25 HP & UP TRACTORS

- (2) Kubota L35 TLB's
- Kubota L3450 4WD S.S, Ever Clutch w/Loader. 800 Hrs
- (2) Kubota L3600 4WD w/Loaders, 400 to 1000 Hrs.
- Kubota L3350 4WD w/Loader
- Kubota L3650 4WD w/Loader

USED 15 TO 24 HP TRACTORS

- (1) Kubota B8200 4WD Hydro w/Loader & Hoe
- Kubota B7100, Gear, 4WD
- Kubota B6100 Gear, 4WD
- John Deere 855 4WD Hydro w/Loader, 850 Hrs. Farmall 340 w/Blade..... **\$3,500**
- Farmall Cub w/Belly Mower..... **\$2,300**

USED FRONT MOWERS

- Kubota F2100 4WD, Hydro, 60" mower, 1600 hrs.
- JD F725, 450 Hrs., 54" Deck

USED LAWN & GARDEN TRACTORS

- Kubota G4200 2WD Diesel, Gear, 44" Belly Mower, 500 Hrs.
- Kubota T1600, 2WD Diesel, 44" Belly Mower, Hydro
- Kubota T1400, 2WD, Gas, 40" Belly Mower
- Kubota T1460, 40" deck, (Like New)..... **\$1,595**
- Kubota G1900 4 Wheel Steer w/Grass Vac.

USED SKID LOADERS

- Case 1840
- Case 1835C

MISCELLANEOUS EQUIP.

- Goosen Rak'n Vac, Demo
- 5 ft. King Kutter Discs, 3 pt. hitch
- Bradco Trencher (to fit JD 855)
- 6' used Harley Power Rakes
- Used Bradco IIMD2 Backhoe



FZ 2400 ZERO TURN
Front mower, w/catcher, 311 hrs, Ex Condition



JD 1050 TRACTOR
4WD w/Loader, 1500 Hrs



JD 855
4WD w/Loader, Hydro, 700 Hrs Ex Condition



KUBOTA L3350
w/Loader, Ready to Work



KUBOTA L35 T.L.B.
(2 To Choose From)