

For sale, 430 Weaverville stainless steel 748 hr, 6 years old, best offer, good cond 717-524-9968 Lewisburg

10ft Brillion cullpacker, 4" axle, nice \$900. 10' or 16' Brillion spring harrow, nice \$450. 10' Ford disk. 717-367-7145 Lancaster Co

1967 Dodge 1000 dump \$1000 OBO. IH 400 Cyclo planter 4R dry fert insect updates \$850 OBO. Eves. 724-677-4795 Fayette Co

JD front weights for 4D through 430, standards JD 2 bottom plow \$200. Wico mag for 2 cyl. 717-677-6703 Adams Co

JD 5' rotary mower \$450; Ford 8N sickle mower \$100. Case-Vac parts cultivator, fenders, head, block, tires, etc. 717-529-2943 Lancaster Co

30' jump shear, 5-ton kick punch, 75lb, anvil w/handy cutter, 40KVA spot welder, 12" long, 1" dia. rolls. 717-792-9282 York Co

353 New Holland grinder mixer hammers, never turned, heavy duty, pto shaft. 717-445-4988 Lancaster Co

Liquid fert. attachment for CaseIH 900 corn planter, 4-row disc opener, squeeze pump tanks, mounting brackets. 717-738-1041 Lancaster Co

3 Angus steers, 600lb average, good quality, 75¢/lb, wormed and vaccinated, ready for grass or feedlot 717-741-3679 York Co

Golf carts, 1 gas, 1 battery, need minor repairs, best offer, go cart, runs good \$350. 717-529-4944 Lancaster Co

Dixon riding mower, model ATR, 424, 11hp, nice shape \$775. 717-244-3415 York Co

Six pygmy goats, black, gray, caramel, bucks, does, wether, 3 months - 1 1/2 years, \$50-\$125. 717-933-4978 Lebanon Co

Houle pump, 32' 1992 \$5500 OBO. 2200 gal liquid manure spreader \$1500 OBO. 50,000lb rated winch \$2000 OBO. 717-776-3108 Cumberland Co

1984 Ford Ranger pickup with cap, sand color, 4x4, at, V6, runs good \$1700 OBO. 814-448-2317 Huntingdon Co

438ac 4-row corn head for F or FL \$900. 234 New Idea, corn picker \$2500, both good shape. 717-799-5202 Columbia Co

NH 269 baler thrower has new belts, field ready. \$850. No Sunday calls. 717-776-7334 Cumb. Co

12" I beams, 31# per ft. 2-11' long \$75 each. 2-19' long \$135 each. Or \$400 takes all. 717-838-3090 Lebanon Co

John Deere 750 loader 4x4, low hours w/3pt plow, disc, scraper blade, potato plow, \$7995. Call after 6pm. 717-949-2415 Lebanon Co

77 Olds Outlass, good engine, 26Q V8, trans, \$250. Amana freezer, 1123, like new, short in compressor, \$150. 301-845-8894 Fred. Co., MD

15' Ryobi cut off saw with hydraulic motor, excellent condition. Beech dale wood works, Bird-In-Hand, Pa. 717-656-4374

Risler TMR feed cart, \$1250; Patz barn cleaner slid, stainless steel, ccw, 16ft, \$550. 717-898-2539 Lancaster Co

Eutz 100-06, 100hp dsl, workhorse, 5500. Leely weeder, 7.5' 900 plastic layer 450 tunnel attachment. 540-882-3996 Loudour Co, VA

Gelbuich beef cows from Dr. Thaer estate, Vermont. Some reg. with papers. Soon to freshen, good cattle. 717-865-4675 Lebanon Co

Satin Angora/French Angora bunnies. Show quality, excellent fiber, pedigree. \$50 each \$90 pair. New rabbit cages \$40. 717-838-4927 Lebanon Co

Angus cattle purebred inquire. Haylage equipment - good condition. Round bales, 800# \$90/T. Fencing equipment - new and used. Call 717-245-2820 Cumberland Co

Howard '80' Rotorvatter \$2000; Brinly Hardy 48" PTO-tiller \$650; Woods L309 6' belly, like new \$1000; Ford 914 deck. 717-836-4199 Wyo. Co

Dbl bunk beds, good mattress, stack chairs, folding tables, camp supplies & dishes. Shirey's Hostel, Geigertown, Pa. 19523. 610-286-9835 Berks Co

JD 6030, SR, 3REM, Tires 80%, Cab, \$17,000. JD 5020, SR, 2REM, \$10,000. Call 9pm. 301-689-8673 Garrett Co, MD

Panel saw, Delta arm saw, floor scales, AC/DC welder, iron worker, tire machine, 1926 Ford Model T Roadster. 609-232-7686 Camden Co, NJ

24v starter autolite MBP4006T total rebuild \$100 OBO. Delmhorst hay tester, 3 probes \$100 OBO. After 7pm. 410-745-9408 Talbot Co, MD

Belgian colts, good team, born May '97. Blond mare due 4/15, 17 hands, broke. 113A Green Tree Rd, Quarryville, Lancaster Co

89 Ford MDL 5610, 4cyl, diesel, 60hp, loader, 2000 hrs, good strong tractor. Call and leave a message. 717-677-9407 Adams Co

Old JD tractors, 1939 JD L, 1940 JD H, 1937 JD A, 1956 JD 420 crawler with loader. 717-482-2070 Lycoming Co

Computer, IBM compatible (Austin) 386SX, includes computer, monitor, mouse, Epson printer, Windows 3.1, Word Perfect 5.2 - \$300. 610-582-2587 Berks Co

Roll of hog or cattle fence wire, 250 feet by 48 in. good condition \$25. 610-326-5951 Chester Co

Fresh, registered Holstein Stardust heifer, vacc and all shots. 717-742-7008 Northumberland Co

# Beast of burden.



- Model 029 Stihl Farm Boss® Chain Saw
- Designed for rugged farm use
  - Side-access chain tensioner
  - Adjustable oil pump
  - Built-in winterizer kit
  - Anti-vibration system reduces fatigue
  - Stihl dependability from turf to treetop
  - Made in USA

**STIHL**  
Number One Worldwide



Available at these servicing dealers

<b>Abbottstown</b> MESSICK'S RD #1 Box 255A 717-259-8617	<b>Jonestown</b> BLUE MOUNTAIN ENTERPRISES, INC. Rt. 72 South 717-865-2994	<b>Ronks</b> A & B SALES & SERVICE 370 Newport Road 2 Miles South of Rt. 23 Along 772 Thru Monterey
<b>Allentown</b> LEHIGH AG EQ. INC. 6670 Rupperville Rd 610-398-2553 1-800-779-3616	<b>Lititz/Lebanon</b> BOMBERGER'S LAWN & GARDEN Lititz: 717-626-3301 Lebanon: 717-272-4155	<b>Schaefferstown</b> MARTIN'S EQUIPMENT CO. Rt. 501 1/2 Miles South of Schaefferstown, PA 717-949-6817
<b>Carlisle</b> TRI-BORO CONSTRUCTION SUPPLIES 1490 RITNER HWY. 1-800-246-6590	<b>Loysville/Carlisle</b> GUTSHALLS INC. Loysville - PA - Carlisle 717-789-4343 717-249-2313	<b>Shartlesville</b> MOUNTAIN VIEW SUPPLY, INC. (Formerly Shartlesville Farm Service) P.O. Box 529 610-488-1025
<b>Dallastown</b> TRI-BORO CONCRETE, INC. 435 Locust St. 717-246-3095 1-800-632-9018	<b>McAlisterville</b> C.B. HOOBER & SON 717-463-2191	<b>Shippensburg</b> LEINBACH FARM EQUIP. 1120 Ritner Hwy 717-532-5511
<b>East Earl</b> GOODS LAWN & GARDEN CENTER Route 23 717-445-4490	<b>Oxford</b> DEER CREEK EQUIPMENT, INC. 6600 Limestone Rd 610-932-8858	<b>Tamaqua</b> CHARLES S. SNYDER, INC. RD. 3 717-386-5945
<b>Elizabethtown</b> MESSICK'S Rheams Exit-Rt. 283 717-367-1319, 717-653-8867	<b>Palmyra</b> HERR'S REPAIR SHOP RD 2, Box 115A 717-838-1549	<b>Waynesboro</b> QUINCY TRUE VALUE HARDWARE Rt 997 In Quincy 717-749-3653
<b>Ephrata</b> WES STAUFFER ENGINES & EQUIPMENT 23 Pleasant Valley Rd 717-738-4215	<b>Palmyra</b> WEAVER'S LAWN & GARDEN 740 W Main St 717-838-5999	<b>Hagerstown, MD</b> EBY'S LAWN & GARDEN 16409 Fairview Road 301-733-4158
<b>Ephrata, Hershey</b> HOLLINGER'S LAWN & GARDEN EQUIP. Ephrata, Pa. 717-859-5455 717-656-2710 Hershey, PA 717-533-4060	<b>Peach Bottom</b> A.K. SAW SHOP 214 Peach Bottom Road	<b>Cockeysville MD</b> SUBURBAN SALES 10757 York Rd 410-785-2277
<b>Gap</b> GAP POWER EQUIPMENT Corner of Rt. 30 & Rt. 897 717-442-8970	<b>Pequea</b> DREXEL AUTO SUPPLY 333 Steinhilber Farm Road 717-284-2916	<b>Whiteford MD</b> DEER CREEK EQUIPMENT, INC. 720 Wheeler School Rd. 301-879-5090
<b>Hummels Wharf</b> HUMMEL'S TEXACO Rt. 11 & 15 717-743-7459	<b>Reamstown</b> EAGLE RENTAL CENTER Rt. 272, Reamstown Traffic Light 717-336-3945	



## Let Your Crops Dine On Alpine

The Company That Offers You High Quality Plant Food At Competitive Prices

Talk To Us About Seed Banded Plant Food And Foliar Feeding  
Place Phosphorus Where It Does Most Good (Seed Banded)

6-24-6 9-18-9 3-18-18 5-15-15  
Check Early Order & Quantity Price

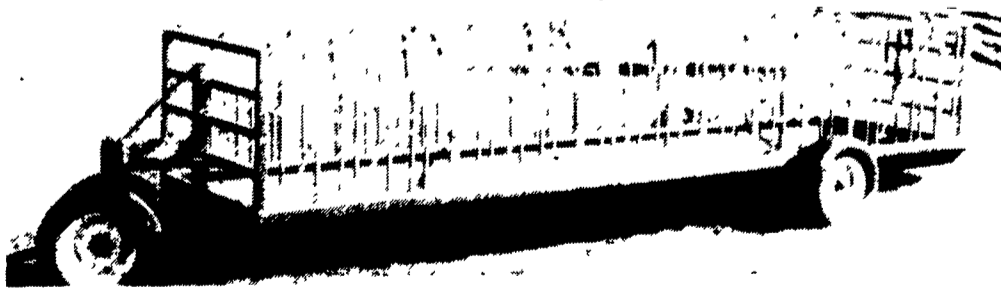
**Zimmerman Lime & Fertilizer, Inc.**  
(717) 733-7674

235 W. Burkholder Dr.

Lititz, PA 17543



**FEEDER WAGON WITH HEADLOCKS**  
Featuring 24 Zimmerman adjustable headlocks for animals 10 months and older. Coated with Baked On Top Grade Polyester TGIC Powder Mounted on 5'x20' trough with adjustable tongue



**FEATURES:**  
FARMCO FEEDER WAGON  
\* 15" implement wheel (6 bolt)  
\* 2 jacks on front corners for added stability

**FEATURES:**  
ZIMMERMAN HEADLOCKS  
\* Spring loaded neck bar for easy removal and adjustment  
\* Individual lock on each yoke for retaining individual animals

## PAUL B. ZIMMERMAN, INC.

Call or Write For Additional Information And Your Nearest Dealer

Hours Mon. Thru Fri. 7 to 5

295 Woodcorner Rd.  
Lititz, PA 17543-9165  
1 Mile West of Ephrata  
717-738-7365