

**Family Living  
Focus**

**Annette Goodling**  
Northampton Co.  
Extension Agent



to cool eggs by placing under cold running water till cool. This method quickly cools eggs to the 40° F. and helps prevent the green coating that sometimes forms around the yolk. The eggs are now ready for you and the children to begin the fun part of decorating. The time allowed for this project needs to be limited to less than hour so the eggs can be refrigerated within the two hour time frame allowed for high risk foods.

The eggs have been safely cooked and decorated and now it's time for the next tradition; the Easter egg hunt. During the heating process the egg's natural resistance to bacterial invasion is destroyed and bacteria can re-enter the egg through the pores in the eggs. This means the eggs must be hidden in "safe" places where they are protected from soil, dust, pets and other sources of bacteria. As you can see the hiding places for an egg hunt are limited when you use real eggs. Most outdoor egg hunts would be considered an

unsafe environment for hiding eggs since the eggs would be in the grass where pets or other animals might be in contact with the eggs. An indoor egg hunt would be safe if the eggs are hidden within a half hour of the hunt time. As soon as the eggs are found they need to be refrigerated. As mentioned above a hard-boiled egg can only be out of refrigeration for about an hour during the decorating so you really only have an hour to hide and find the eggs before they would be unsafe to eat.

My suggestion for an egg hunt - use plastic eggs. Then you can hide the eggs outside and even the night before so you don't have to get up early to hide the eggs. Donations of plastic

eggs are a good idea for school, scout or community eggs hunts since plastic eggs don't need refrigeration.

Easter eggs can cause food borne illness if they are handled incorrectly. Any bacteria that pass into the egg after cooking will grow rapidly at room temperatures. (Bacteria double in number every 15-20 minutes. If an egg starts with only five bacteria, in two hours at room temperature it would have over a thousand.) Easter eggs that are without refrigeration over two hours are unsafe and should be discarded! Remember to count the decorating time as part of the total time out of refrigeration. Please change your Easter egg hunt tradition slightly this year and use plastic eggs.

**Easter Egg Safety**

It's time to introduce your children and grandchildren to your family's Easter tradition; dyeing hard-boiled eggs is one many families have done over the years. But as we learn more about food borne illnesses, the techniques used for making, decorating and using Easter eggs may need to be modified.

Directions for making hard-boiled eggs usually recommend bring the eggs to room temperature before placing in cold water

and bringing to a boil. Allowing the eggs to warm to room temperature speeds the aging process and the eggs will peel more easily but eggs should only be out of the refrigerator 15-20 minutes before cooking them. Follow the recommendations to start the cooking process in cold water so the temperature will rise gradually and allow the air inside the egg to pass through the pores of the shell without cracking the shell.

The new recommendation is

**New Funding To Protect Streams**

ANNAPOLIS, Md. - culture Secretary Henry A. Virts, D.V.M., today announced

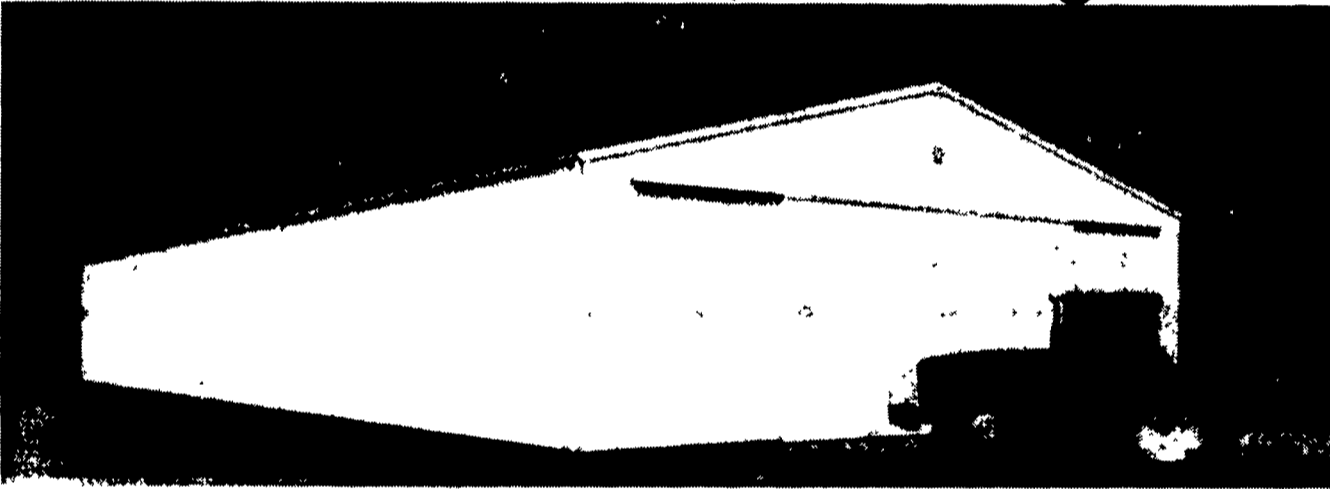
that Ducks Unlimited, Inc. and the Chesapeake Bay Foundation have signed an agreement with the State of Maryland and the U.S. Department of Agriculture to provide up to \$5.5 million in additional cost-share funds over the next five years to help farmers protect environmentally-sensitive land along Maryland's streams and rivers. The agreement bolsters the \$190 million in funding allocated last fall under the Maryland Conservation Reserve Enhancement Program (CREP) to help farmers protect local waterways by offering increased payments to convert environmentally-sensitive crop land into vegetative buffers, stream side forests and wetlands. The additional funding will enable farmers to receive up to 100 percent of the cost to install certain conservation practices to protect water quality in Maryland's streams and rivers.

"This new public-private partnership will make it easier for farmers to balance the desire to participate in environmental protection programs with the need to earn a profit on their land," said Secretary Virts.

"It's a win-win situation for Maryland farmers and the Chesapeake Bay," he added.

Farmers interested in finding out more about the increased benefits for stream side conservation practices should call or visit their local Soil Conservation District office or USDA Service Center. For more information about the agreement, contact the State Soil Conservation Committee at (410)841-5863.

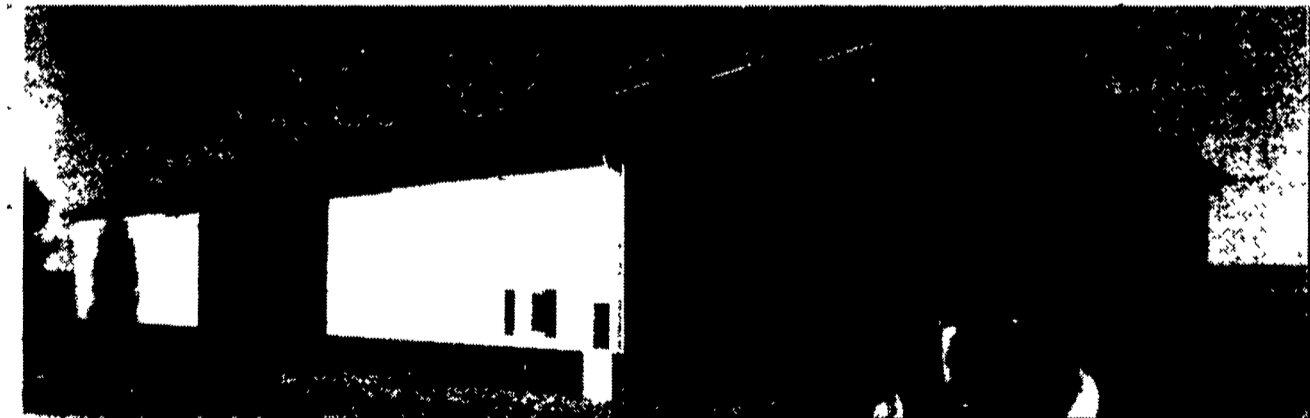
**Technology, Quality, and Value-  
That's Morton Buildings**



**Basic Morton Machine Storage 60'x13'x105' Raised Chord with 7'6" Truss & Column Spacing**

- 27'x14'6" AlumaSteel® Double End Door
- 1-White Walk-In Door (no glass)
- Heavy-Gauge Commercial Quality Steel
- G-90 Galvanizing
- White Polyester Paint Finish
- KYNAR 500®/HYLAR 5000® Color Trim
- Heavy-Gauge Aluminum Gutters & Downspouts
- 50-year Column Warranty (including labor)
- 50-year Snowload Warranty (no weight limit)
- 10-year Wind Warranty on AlumaSteel® Doors (no MPH limit)
- 5-year Wind Warranty (no MPH limit)
- Free Morton Weathervane
- Fully Erected, Tax Included

**\$31,195**  
OFFER EXPIRES 4/30/98



**Deluxe Morton Machine Storage 60'x13'x105' Raised Chord with 7'6" Truss & Column Spacing**

- 1-27'x14'6" AlumaSteel® Double End Door
- 1-22'6" x13' AlumaSteel® Double Sidedoor
- 1-3'x6'8" 9-lite Walkdoor
- 1 - 4'x3' 9-lite Sliding Window with Screen and Shutters
- Heavy-Gauge Commercial Quality Steel
- Continuously Vented Ridge
- 2' Gable Overhangs
- 1' Vented Eave Overhangs
- Interior Protective Liner
- Exterior Steel Wainscot
- Heavy-Gauge Aluminum Gutters & Downspouts
- KYNAR 500®/HYLAR 5000® Paint System on Sidewalls
- Revolutionary FLUOROFLEX 2000® Paint System on Roof
- 20-year Red Rust/Fade Warranty (including acid rain)
- 50-year Column Warranty (including labor)
- 50-year Snowload Warranty (no weight limit)
- 10-year Wind Warranty on AlumaSteel® Doors (no MPH limit)
- 5-year Wind Warranty on Entire Structure (no MPH limit)
- Free Motor Weathervane
- Fully Erected, Tax Included

**\$39,995**  
OFFER EXPIRES 4/30/98



P.O. Box 399, Morton, IL 61550  
© 1997 Morton Buildings, Inc.  
717/624-3331 908/454-7900  
3368 York Rd. P.O. Box 126,  
Gettysburg, PA 17325 Phillipsburg, NJ 08865

**800-447-7436** Illinois only, call 1-800-426-6686

**FURNITURE**

CLOSED SUNDAYS, NEW YEAR,  
EASTER MONDAY, ASCENSION DAY,  
WHIT MONDAY, OCT. 11, THANKSGIVING,  
CHRISTMAS & DECEMBER 26TH

**FISHER'S FURNITURE, INC.**

NEW AND USED FURNITURE  
USED COAL & WOOD HEATERS  
COUNTRY FURNITURE & ANTIQUES

BUS. HRS. BOX 57  
MON.-THURS. 8-5 1129 GEORGETOWN RD.  
FRI, 8-8, SAT. 8-12 BART, PA 17503

**Maintenance Free Railings For  
Porches, Decks or Balconies**

*Elite*

**VINYL RAILING  
SYSTEMS**

717-354-0524 New Holland, PA

All warranties include materials and labor, and are not protected. Special pricing includes taxes, materials, delivery, unloading, and labor to erect within 40 miles from a Morton Buildings, Inc construction center. Customer must provide a site prepared to Morton Buildings, Inc Site Specifications From 153 a (i.e. a level site without underground obstruction) and participate in Morton's progressive payment plan. Prices may vary because of local building codes. Due to local price variations, these prices do not include concrete. Offer expires April 30, 1998. Prices may vary for every 1,000 feet over 6,000 feet of elevation.  
KYNAR 500® Trademark of Elf Atochem, NA HYLAR 5000® Trademark of Ausimont, USA  
FLUOROFLEX 2000® and AlumaSteel® Trademarks of Morton Buildings, Inc.