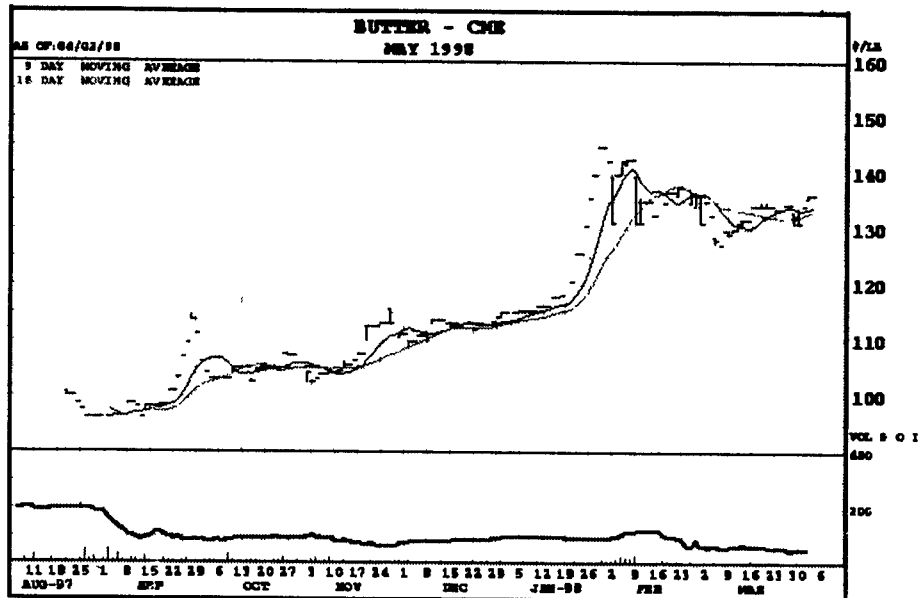
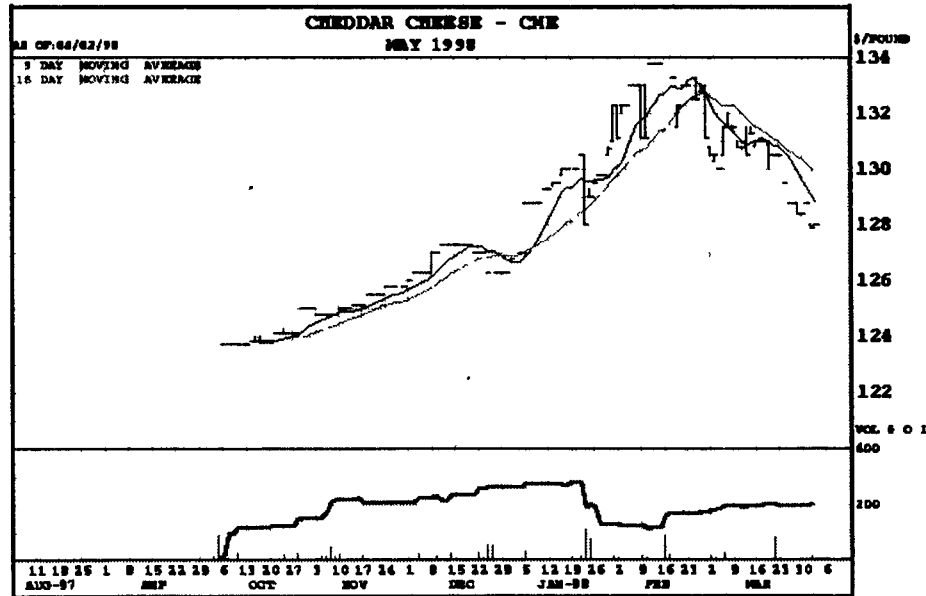


(Continued from Page A16)



Symbol Open High Low Last Chge
CFK5 - 04/02/98 128000 128000 128000 128000 +150

-----Moving Average-----
ay 09 18 40
128758 129780 131130

-----Stochastic-----
ay 09 14 20
to 5.71 4.76 3.61
k 5.34 4.39 3.47
d 7.64 6.12 4.74

-----Relative Strength-----
ay 09 14 20
25.80 31.39 36.72

So.St.Paul, MN Thursday, April 2, 1998
Chicago Board of Trade Grain Futures

USDA-AMS

Symbol Open High Low Last Chge
BUE5 - 04/02/98 136000 136000 136000 136000 unch

-----Moving Average-----
ay 09 18 40
133738 133202 133784

-----Stochastic-----
ay 09 14 20
to 100.00 100.00 100.00
k 62.15 84.54 87.77
d 42.65 75.87 77.34

-----Relative Strength-----
ay 09 14 20
63.93 58.99 57.40

-----Momentum-----
Day 09 18 40
+2000 +7000 -6000

-----Directional Indicator-----
Day 09 14 20
ADX 16.32 12.94 15.62
-DI 20.78 26.39 28.84
+DI 37.72 37.48 38.74

-----Historic Volatility-----
Day 09 14 20
19.10% 16.98% 15.78%

CORN:

May	2.56	up 1 1/2	3.10	2.41 3/4
Jul	2.63 1/2	up 2	3.15 1/2	2.45
Sep	2.70 1/4	up 3	3.01	2.44
Dec	2.74 1/2	up 3 1/2	2.99 1/2	2.47
Mar	2.81 1/2	up 3 3/4	3.04	2.65

Soybeans:

May	6.45 3/4	up 2 1/2	7.52	6.01
Jul	6.46	up 1 1/2	7.53	6.11 1/2
Aug	6.44 1/4	up 1 1/2	7.45	6.25
Sep	6.28	unch 1/2	7.23	6.24
Nov	6.19 3/4	dn 1/2	7.17	5.97
Jan	6.26 1/2	unch	6.43	6.18 1/2

	Settlement	Change	Contract High/Low	
			High	Low
Wheat:				
May	3.16 1/2	up 2	4.39 1/2	3.12 1/2
Jul	3.26 1/4	up 1 3/4	4.25	3.22 1/2
Sep	3.35 1/2	up 2 1/4	4.03	3.31 1/2
Dec	3.47 1/4	up 2	4.17	3.43 3/4
Mar	3.57	up 2	3.68 3/4	3.50

Shaping the future with 4-H and FFA.

CoreStates Bank's Agri-Finance Department is proud to support 4-H and FFA members and programs. We believe preserving the family farm is one of the most effective ways to ensure a better future for everyone. So CoreStates is committed to working with young people and supporting their goals.

With guidance and encouragement, they will develop the skills and values they'll need to be successful in farming or wherever their lives take them. And their achievements will benefit us all.



Photo to left Kelly Dietrich of Hamburg, a member of the Tulpehocken FFA, with her reserve champion steer bought by Scott Hauseman (left) and Ted Bowers (center) from CoreStates Bank at the Berks County 4 H Beef Club Roundup

Photo to right: Chris Hess and his grand champion market lamb at the Ephrata Fair purchased by CoreStates Bank represented by Ted Bowers (left)

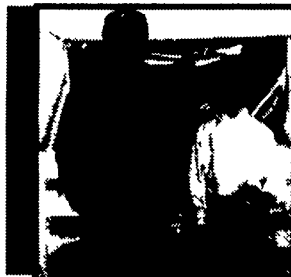


Photo below: The Lancaster County 4-H Livestock Banquet enjoyed the lamb raised by cousins Sarah Zurrn and Kathy Musser from the Mt Joy area. These lambs were shown at the Elizabethtown Fair and purchased and donated by CoreStates Bank represented by John Mattiolo (left) holding daughter Chloe, and Darwin Boyd (right). Also shown is Fair Queen Carrie Davis from Litzitz.

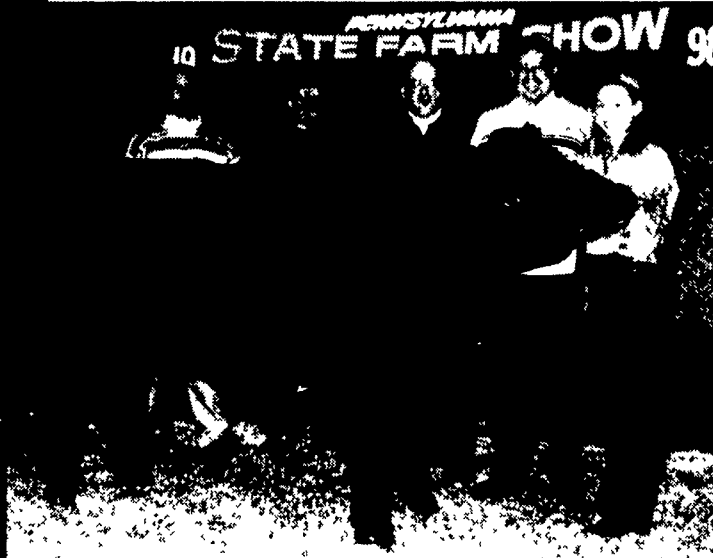


Photo above Jessica Stoltzfus of Elizabethtown (right) sold her Intell steer at the 1998 PA State Farm Show to CoreStates Bank represented by (left to right) Ted Bowers, Scott Hauseman, Bill Hughes and Darwin Boyd. CoreStates Bank donated the steer to the Lancaster County 4-H Banquet and the Lancaster County 4-H Swine Club

Photo below: Alaine Bower from the Bottle Run 4-H Club with her middleweight reserve champion market lamb at the Lycoming County Fair. The lamb was purchased by CoreStates Bank represented by Janet Kepner (left) from the Hughesville Branch



Member FDIC