



# SHIRN'S GMC & ISUZU TRUCKS

1804 Lycoming Creek Road., Rt. 15, Williamsport, PA 17701  
 Bus.: (717) 326-1581, Ext. 35, 36 & 37  
**(800) 343-7456**



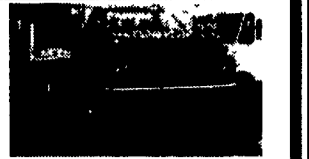
**1994 Mack Tandem Axle Dump, 300 HP 7-Spd 60,000# GVW ALL TRUCK**



**1981 Int'l Dump, Diesel Power, 5+2 Spd, 10' Dump Body**



**1987 GMC Brigadier, 6V71, 9-Spd, New 10' Box, ALL TRUCK**



**1994 GMC Tandem Axle, 275 HP, 56,000# GVW, 10-Spd**



**1997 GMC 3500 Dump; 4x4 Diesel Eng, Triple Tipper, Demo**



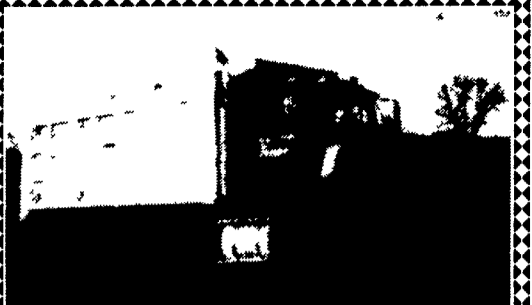
**New 1997 GMC Tandem Axle Dump; 275 HP 10-Spd 56,000# GVW Call For Details**



**NEW GMC 6000 & 7000 Models In Stock; (Various Specs) 25 950# GVW To 33,000# GVW**



**NEW GMC Municipal Dump Truck, 250 HP 9 Spd, Central Hydraulic System, 36,200# GVW**



**Tri-axle Dump, 87, T-800 KW 3406 B with 8LL 18/44's, 17' Alum. Body, Pintle Hook, Nice Truck, Ready To Work \$45,000 OBO**

**717-349-7737**

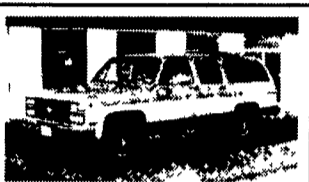


(717) 768-8225  
 (800) 223-KEIM  
 RT. 30 Lincoln Highway East Paradise, PA 17562

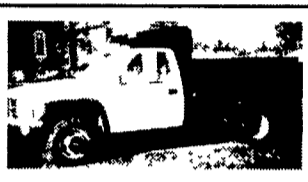
**YOUR TRUCK, VAN & 4x4 HEADQUARTERS**  
**1-800-223-KEIM**



**90 CHEVY SILVERADO**  
 Ext Cab K1500, 4x4, 350 V8, AT, AC, PW, PL, Cass, 50,000 Miles \$8,900



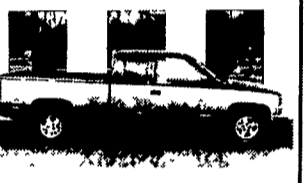
**90 CHEVY SUBURBAN SILVERADO C2500**  
 Ice Blue & White, 454 V8, AT, AC, PW, PL, Cass, 80,000 Miles



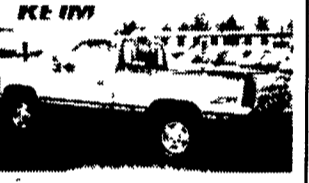
**98 CHEVY DUMP TRUCK**  
 3500 HD 4x4, 12,000 GVW



**95 CHEVY SILVERADO**  
 Ext Cab K1500, Z71 Suspension, Emerald w/Grey Interior 350 V8, AT, AC, PL, PW, Cass 41,000 Miles



**94 GMC SLE**  
 Extended Cab, V8, 2WD, Auto, A/C





**94 CHEVY SILVERADO Z71**  
 Shortbed, V8, Auto, U/C, PW, PL, 51,000 Mi



**97 CHEVY REG. CAB**  
 3/4 Ton, Silverado, V8, Auto, A/C, PW, PL



**91 FORD F150 XLT LARIAT**  
 Reg Cab, 6 cyl, 5 spd, AC, Cass, Blue & Silver \$8,900

**89 K3500 Ext. Cab Chevy 4x4 15,000 GVW - 4x4 - AT, PW, PD, AC, Cruise, Running Boards, 76K, (2) 18" x 36" Merritt Alum. Tool Boxes, 10 ft. Steel Bed, 4ft. Rack Over Roof, Steel Side Boards Are Ramps, Gooseneck Hitch, Pintle Hitch, Adjustable Ball Hitch.**

**\$12,500**  
**717/435-5353**



**97 FORD F350 CREW CAB 4x4**  
 Power Stroke, Diesel, AT, AC, XLT Pkg, Alum Wheels, PW, PL, C.T. Only 18,000 Miles, Black #F714


**OVER 120 TRUCKS** Preferred Warranties Available on Most Trucks

## Bobby Gerhart's Truck World


2400 E. Cumberland St. Rt. 422 Lebanon, PA 17042  
**717-273-7995**  
 Mon. - Fri. 9-8, Sat. 9-3




**96 DODGE RAM 3500 CLUB CAB DUALY 4X4** Cummins Turbo Diesel Laramie SLT AT A/C PW PL C.T. CD Player 32,000 Miles, Dk Green/Pewter #D235




**93 CHEV. K3500 CREW CAB DUALY 4X4**  
 6.5 Turbo Diesel, Silverado, AT, A/C, PW, PL, C, T, 102,000 Miles, Black/Silver Looks & Runs Great.



**94 FORD F350 CONTRACTOR DUMP**  
 351 V8, 5-spd, Am/Fm, Dual Tanks, Tool Boxes, 59,000 Miles, Red #F681




**97 FORD F250 SUPER CAB 4X4 XLT**, 351, V8, AT, A/C, C.T. PW, PL, Alum. Wheels, 37,000 Miles, Dk. Green Metallic, #F721



**93 FORD E350 SUPER VAN**  
 15 Passenger, XLT, At, 351 V8, Dual A/C & Heat, PW, PL, White, 75,000 Miles #F691



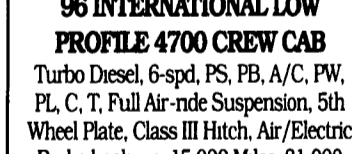
**97 FORD F350 CREW CAB 4X4**  
 7.3 Power Stroke Diesel, XLT, 5-Speed, A/C, PW, PL, C, T, 4 10 Rear, 15,000 Miles, White #F717



**95 DODGE RAM 3500 4X4 CONTRACTOR DUMP**  
 w/Plow, Cummins Turbo Diesel, 5-Spd., A/C, 25,000 Miles #D229




**95 FORD F250 H.D., 4X4 W/MEYER P/A PLOW** Power Stroke Diesel, 5-Spd., AM/FM Cass., T.C, Bedliner, Dual Tanks, 33,000 Miles, Dark Blue, #F695




**96 INTERNATIONAL LOW PROFILE 4700 CREW CAB**  
 Turbo Diesel, 6-spd, PS, PB, A/C, PW, PL, C, T, Full Air-ride Suspension, 5th Wheel Plate, Class III Hitch, Air/Electric Brake hook-up, 15,000 Miles, 21,000 GVW, Beautiful Truck




**96 FORD F250 SUPERCAB 4X4**  
 Power Stroke Diesel, 5-Spd, A/C, XLT Trim, PW, PL, C, T, and Much More, 18,000 Miles, Electric Red, #F700




**96 FORD F250 SUPER CAB 4x4**  
 Power Stroke Diesel, XL Trim AT, A/C, 26,000 Miles, Dk. Metallic Green #F702



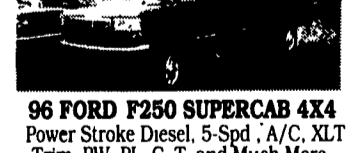
**88 CHEV. K1500 SUBURBAN 4X4**, 6.2 Diesel, AT-OD, Dual A/C, Silverado Pkg., 3 Seats, 92,000 Miles, VERY CLEAN. (RARE) Brown/Tan #C456




**95 DODGE RAM 2500 4X4**, 360 V8, AT, PS, PB, AM/FM, New Western Plow, 60,000 Miles, White/Grey




**91 DODGE UTILITY CONTRACTOR DUMP**  
 Cummins Turbo Diesel, At, Am/Fm, PS, PB, Tool Boxes, Only 64,000 Miles (Rare) #D210



**96 FORD F250 SUPERCAB 4X4**  
 Power Stroke Diesel, 5-Spd, A/C, XLT Trim, PW, PL, C, T, and Much More, 18,000 Miles, Electric Red, #F700




**94 CHEV FULL SIZE BLAZER 4X4**  
 6.5 Turbo Diesel, Silverado Pkg., AT, A/C, PW & More, 83,000 Miles, White w/Gold Trm #C459




**95 CHEV K3500 CREW CAB DUALY 4x4**, 454 V8, AT, A/C, Silverado Pkg., PW, PL, C, T, 48,000 Miles, Black



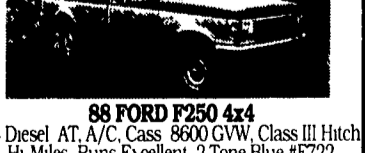
**92 FEATHERLITE TRAILER**  
 Air Cond., Setup For Horses or Dogs Call For Info & Specs




**95 GMC K2500 EXT. CAB 4x4**  
 6.5 Turbo Diesel, AT, A/C, C.T, Sierra Pkg 54,000 Miles, Black #G189



**88 CHEV C30 CREW CAB CHASSIS**  
 350 V8, 4-spd, PS, PB, Good Condition




**88 FORD F250 4x4**  
 7.3 Diesel AT, A/C, Cass, 8600 GVW, Class III Hitch Hi Miles Runs Excellent 2 Tone Blue #F722




**87 FORD F350 Contractor Dump**  
 6.9 Diesel, 4-Spd, AM/FM, PS, PB, 112,000 Miles, Looks & Runs Good




**94 FORD F250 H.D. XLT 4X4**  
 Turbo Diesel, 5-Spd 8600 GVW, A/C, PW, PL and Much More, 73,000 Miles, Grey/Blue #F712



**95 FORD F250 SUPER CAB 4X4**  
 Power Stroke Diesel, XLT, AT, A/C PW PL C, T, Alum Wheels, 30,000 Miles, Maroon/Silver, #F713



**89 FORD F250 EXT. CAB 4X4**  
 Heavy Duty, 351 V8, AT, A/C, C, T, dual Tanks, 92,000 Miles, #F648



**90 DODGE RAM 3500 DUALY**  
 Cummins Turbo Diesel AT A/C PW PL C, T, LE Package Hi-miles but looks & runs good, Charcoal/Silver #D232