

OVER 60 YEARS IN BUSINESS!
WOLF MOTOR CO.

ROUTES 72 & 283, LANCASTER, PA 17601

CENTRAL PA'S

FORD TRUCK DEALER

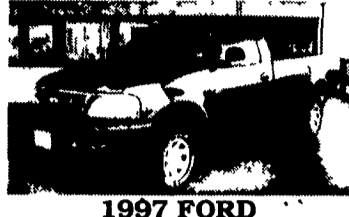
Sales Reps: Charlie Burke, Gary Brennenman,
 Dennis Asel, Mgr.

717-299-4331

Toll Free 800-637-6612



98 FORD ECONOLINE CARGO VANS
 E150's, 250's & 350's



1997 FORD '97 LEFTOVER F250 4x4
 5.4 L V-8, Auto, AC, AM-FM, Trailer Towing Pkg.
\$20,835



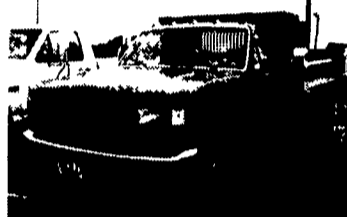
1989 FORD SUPER DUTY F-450
 460 V-8, 9' Flat Bed, 5 Speed, 60,000 Miles
\$10,900



1998 FORD F800
 w/10' Dump Body, 33,000 GVW, 250 HP Diesel, 9 Spd., Air Brakes, AC, AM-FM
\$42,200



92 MORGAN VAN BODY
 20', 96" High, Roll-Up Rear Door
\$3,800



1997 FORD F350
 w/8' Dump Body, 11,000 GVW, Power Stroke Diesel, Auto
\$25,600

1977 FORD F350,
 400 V-8, 4 Spd.,
 124,000 Miles, 12'
 Dump, Nice
\$3,900



1984 MACK MS-200 DIESEL,
 175 HP, 5 SPD, 28,500
 GVW, 149,000 Miles, 22'
 Flatbed, Will Separate
\$6,800

(717) 285-5544
 No Sunday Calls



Army 6x6 Posthole Digger
 Call 610-944-9871
 After 6 pm



SAND BLASTERS & BLAST CABINETS



SAVE \$\$\$



TOOLS AND EQUIPMENT

4294 E. HARRISBURG PIKE
 DEPARTMENT LF CATALOG
 MIDDLETOWN, PA 17057
 (717) 944-0318
 Route 230 Between
 Elizabethtown & Middletown

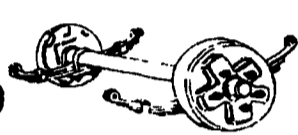
FREE CATALOG CALL OR WRITE NOW!!

AUTOBODY PARTS, PAINTS & SUPPLIES

BUILD OR REPAIR YOUR TRAILER. WE HAVE PARTS.

MOST CLASS III HITCHES

\$79⁹⁹ to \$89⁹⁹



USED 4x4's Pickup's, Bronco's & Blazer - Call For Our Low Prices



NEW UTILITY TRAILERS
 3,000 GVW, Extra Heavy Frames
 w/Treated Lumber Deck, Lights,
 Chains, Etc Included!!!
 5'x10' Deck.....**\$750**
 6'4"x12' Deck.....**\$875**
 Add-On Landscape
 Ramp/Gate.....**\$145**



"NEW" 16' Deck Car Hauler
 Has Two 24" Wide Diamond Steel Runners, Tube Steel Frame,
 4-Wheel Brakes, Safety Breakaway Kit & Full Lighting
 Beaver Tail & Ramps, Removable Left Fender & More For **\$1,750**

Hours: Tues.-Fri. 9 AM - 6 PM Saturday 9 AM - 2 PM Closed: Sunday & Monday

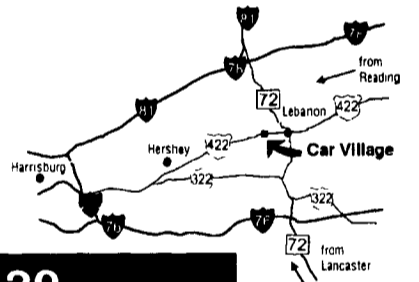
Business Hours:
 Mon.-Fri. 9 to 9;
 Sat. 9-4

RTE. 422 WEST LEBANON, PA

(Across From Lebanon Valley Mall)

CAR VILLAGE

HEAVY DUTY TRUCKS



PHONE 717-274-2000 Toll Free 1-800-650-1420



4x4 CLUB CAB DUALY 95 DODGE
 Black Beauty Is Here, Cummins Turbo Diesel, AT, A/C, 4 10 Gears, Tow Pkg, Chrome, Simulators, 32,000 Miles



QUAD CAB 4 DOOR, 98 DODGE 3500 4X4
 Almost New, Only 700 Miles, Cummins Turbo Diesel 5 Spd., AC, 4 10 Limited Slip Axle, Great Tow Machine



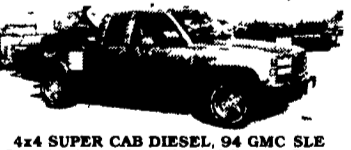
5 SPD DUALY 97 DODGE 3500 SLT LARAMIE
 Awesome Tow Machine, Cummins Turbo Diesel, 5 Spd., AC, Tilt, Cruise, Heavy Duty Frt & Rear Dana Axles, 4 10 Gear, New Truck Warranty



4X4 RACK BODY DUMP 95 DODGE
 Cummins Turbo Diesel, Auto, A/C, 12 Ft Bed, Tow Pkg, 25,379 Miles, A Real Workhorse



CUMMINS TURBO DIESEL 92 DODGE HEAVY DUTY
 3/4 Ton Very Strong - Very Clean Truck, Local 1 Owner Trade, Only 37,000 Miles, Probably The Nicest Anywhere



4x4 SUPER CAB DIESEL, 94 GMC SLE
 Good Lookin' & Only 48,000 Miles, 6.5 Turbo Diesel, AT, A/C, Capt Chairs, Console, Aluminum Wheels, Remaining Factory Warranty \$18,900



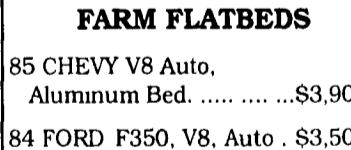
5 Sp Cummins 95 DODGE 2500 CLUB CAB,
 Hard To Find - Don't Wait Powerful Cummins Diesel 5 Sp, A/C Tow Pkg 2 Tone Paint 49,000 Miles, New Tk Warranty



TOW MACHINE 94 CHEVY SUPER CAB DUALY
 4 Wheel Drive, Real Clean, 30,000 Miles, High Output 6.5 Turbo Diesel, AT, A/C, 4 10 Gears, You'll Like It



Only 3,000 Miles 97 DODGE CLUB CAB DUALY,
 4 Wheel Drive, Like New, Cummins Turbo Diesel, AT, A/C, 4 10 Limited Slip Tow Pkg



FARM FLATBEDS
 85 CHEVY V8 Auto, Aluminum Bed. \$3,900
 84 FORD F350, V8, Auto . \$3,500



4X4 CREW CAB 96 CHEVY K3500 SILVERADO
 Perfect - Only 21,000 Miles, High Output 6.5 Turbo Diesel, AT, A/C, CD Player, 4 10 Gears, Tow Pkg



HEAVY DUTY 89 FORD F250 4X4
 8600 GVW, V8, Auto, A/C, Vinyl Seat & Floor, Great Farm Tk \$7,900



WESTERN HAULER 94 CHEVY CREW CAB DUALY
 Only 58,000 Original Miles, Strong 454 I.I., V8, Auto, A/C, Gooseneck Hitch, This Truck Will Tow Big Loads



PULLIN MACHINE 92 DODGE DUALY
 Heavy Duty 1 Ton Cummins Turbo Diesel, AT, AC, Class 4 Hitch, This Truck Will Do The Job



4X4 DIESEL SUPER CABS 96 FORD F250's - 2 Available
 Powerstroke Turbo Diesel, AT, A/C, Tilt, Cruise, All Options - Aluminum Wheels, Low Miles, New Tk Warranty



12 FOOT BOX TRUCK 88 FORD F350
 Very Nice, Very Clean, Only 33,000 Original Miles, V8 Auto, Runs & Drives Great, Will Sell As Chassis



5 SPD POWERSTROKE SUPER CAB 96 FORD F250
 4 Wheel Drive, Awesome Tow Machine, Gooseneck & Class 3 Hitch, Diesel Power, 5 Spd, A/C, 4 10 Gears, Dual Tanks, 32,000 Miles



HEAVY DUTY FARM TRUCK 84 CHEVY 3/4 TON
 Local 1 Owner, This Truck is in Excellent Condition, 350 V8, Runs Superb, Vinyl Floor, Big Swing Out Mirrors \$3,900



4 DOOR F250 4X4 WE HAVE (3)
 97 Powerstroke, AT, 13,000 Miles
 96 Powerstroke, AT, 32,000 Miles
 96 Powerstroke, 5 Sp., 44,000 Miles



4-Door Crew Cab, 94 CHEVY, Room for the Family or Work Crew, Local 1-Owner Trade
 Only 50,000 Miles, 6.5 Turbo Diesel, AT, A/C, Silverado Pkg, Beautiful



5 SP GAS, 96 FORD F250 SUPER CAB, 4 WHEEL DRIVE
 Extra Clean, Extra Nice, Only 25,000 Miles, Captain Chairs, Console, Tow Pkg, Aluminum Wheels, New Tk. Warranty



1 TON DIESEL 97 FORD F350 XLT
 It's Perfect Only 23,000 Miles, All Fact Warranties, Powerstroke Turbo, AT, A/C, Solin Frt Axle, A Real Truck



Work Van, 95 FORD F250 Super Cargo Van
 Nice & Clean, 47,000 Miles, Heavy-Duty 3/4 Ton V8, Auto, A/C, Rear Glass Only



Work Style, HEAVY DUTY FORD F250 SUPER CAB XL,
 Powerstroke Turbo Diesel, AT, A/C, Vinyl Floor



4X4 HEAVY DUTY 93 FORD F250
 Diesel Power, 5 Spd, AC, Lock Out Hubs, Dual Tanks, Only 58,000 Miles, Real Clean
\$17,900