

LEED TRUCK CENTER
402 South Chiques Rd
Salunga Exit, Route 283 **717-898-1200**



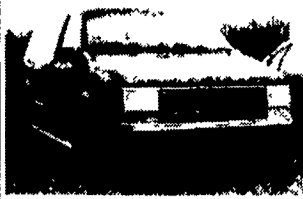
89 FORD F800,
7.8 Liter 6 Spd P/S, Hyd Brake
33,000 GVW 18 C&C
Priced To Sell

87 ISUZU NPR 3.9 LITER,
5 spd P/S 13,250 GVW with 10
Gichner Reefer Body & CB II City Boss
T/K unit with electric Slaby Insp Clean
Only **\$7,900**



84 IHC S1954, DT466,
Allison A/T P/S AB, 32,450 GVW
with 20 Morgan Reefer & MD-11
Thermo King or will separate
Call For Details

86 IVECO Z230T
6 Cyl Turbo, 5 Spd, P/S, Hyd/Air
Brakes 16,900 GVW 20 Van with
Ramp 203,000 Miles 3/99 Insp
Call For Details



1989 Plymouth
Voyager 2.5L V6,
AT, AC, 102,675 Mi,
Runs Good, Nice
Cheap Van \$3,000

1994 Ford Taurus GL
3.0L V6 AT AC
Loaded 87,131 mi
Ready to go Runs &
drives excellent
Reduced price!!!
Must Sell!!! \$5250



John E. Kreider
717-361-9296

LEFEVER BROS.
CHEVROLET
CHEVY TRUCKS **Geo.**

YOUR DIRECT LINE TO GENUINE GM PARTS

(800) 533-3837

When you call the number listed above, you'll reach our wholesale parts specialists, who can help you keep your GM repair work moving quickly.

Ask about:

- Specializing in GM Medium Duty Trucks, Current and Obsolete.
- \$500,000 Parts Inventory.
- Parts Locator for Those Hard to Find Items.
- We Ship Anywhere, Local Delivery Available.
- Experienced, Knowledgeable Personnel.

Mon, Tues, Thurs, Fri
7:30 a.m. - 4:30 p.m.
Weds 7:30 a.m. - 8:30 p.m.
Major Credit Cards Accepted

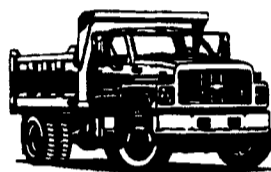
(717) 432-9697

Quality Dealer Since 1921

406 U.S. Rt 15, Dillsburg, PA 17019

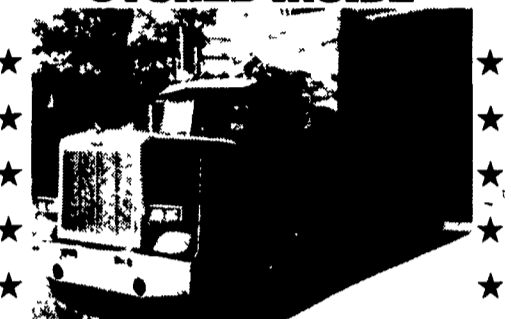


We want your business.



Kodiak
Chevy Trucks
CAT DIESEL POWER

FOR SALE
STORED INSIDE



1975 PETERBILT TRI-AXLE;

359 Conventional; 350 Cummins;
Roadranger 915; Jake; 16/44's; Turner Lift;
90% Rubber; (RED); New Double Frame;
J&J Aluminum Box; 3-Way Tail Gate Bed-
Excellent; Truck Good, Stored Inside

\$25,000 Or Best Offer
(814) 237-0189

Used
Truck Bodies



Installed on NEW or Old Truck
"Makes your Old Truck Look Like NEW!"

- Dry Van Bodies 10' to 24' • Reefer Bodies
 - Flat Bodies
- (Completely Refurnished Bodies in Most Cases
- Same Day Service!)

Phone 717-898-0683

CHARTER ENTERPRISES, LTD.
270 Hostetter Road, Manheim, Pa

HAMILTON MANAGEMENT COMPANY

55 Doe Run Road, PO Box 157, Manheim, PA 17545
717-665-7145 Fax: 717-665-2137



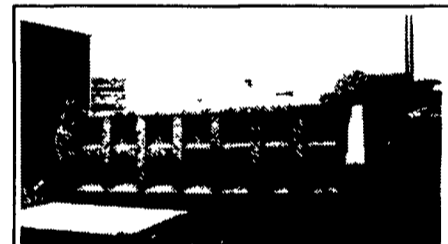
1989 Int.
S1900 C&C, DT 466, 5 Sp. Trans., 2
Sp. Rear, GVW 32,000, Air Brakes
& PS, WB 218" C.A. 148",
Ex. Cond.
\$17,500



1985 2300 Int.
With Complete New 10' Dump, L10
Cummins Eng., 7 Spd. Trans., Air
Brakes, Air Cond, Exceptional
Cond, GVW 35,000
\$26,500



1985 L8000
New 10' Dump Complete,
Excellent Cond.
3208 Cat, 7 Sp. Trans, GVW
38,400, Air Brakes, PS
\$24,500



New 16' Gallion Body
\$4,500
\$5,000 with hoist



1978 GMC Roll Back
Nice Truck
Will Separate, GVW 24,000, 366
Gas, 5 Sp. Trans, 2 Sp. Rear, Hyd.
Brakes, PS, AC
\$11,500



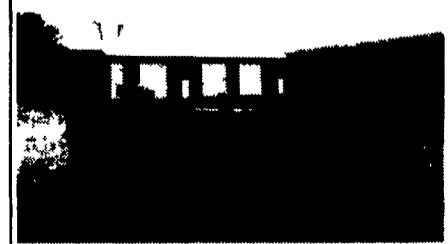
1979 LN8000
3208 CAT., Runs Good, Has
Some Rust
First **\$3,500**
Takes It Home



1988 L8000 Complete
New 10' Dump & Hoist
Excellent Condition,
7.8L Ford Diesel, 7 Sp. Trans,
GVW 39,000, Air Brakes, PS
\$28,500



1986 LN 8000
Long Wheel Base, Stake Body
In Very Good Cond., 20' Stake
Body, 3208 Cat, 5 Sp. Trans, 2
Sp. Rear, GVW 33,000
\$16,500



Used 10' Gallion Body
In Good Condition
\$2,000



Used Storage
Boxes
As Low As
\$300

1985 L9000 Tandem
NEW 14' Dump Body
Very Good Cond.
6.71 Detroit,
8LL Trans,
54,000 GVW
\$29,500