

35 TRUCKS & TRAILERS

USED TRUCKS



94 Dodge 2500 4x4 SLT Laramie 5.9 Cummins Diesel AT A/C Pwds Pdl's Am Fm Cass Pmrs 8800 G V W 4 10 Limited Slip Rear 66 000 Miles One Owner Dk Blue
\$19,400



97 GMC SI 2500 Ext Cab 4x4 350 Vortex Eng AT AC AM FM Cass Cruise Tilt 1 73 Limited Slip Rear Local One Owner 28 000 Miles Green
\$22,900



94 Chev 3500 Silverado Ext Cab 4x4 Dual Wheels 6.5 Turbo Diesel AT AC PWDS PDLs Loaded Pwr Seat 10 000 GVW 4 10 Limited Slip Rear Blue & Silver Clean Truck 80 000 Miles
\$19,400



94 Chev 3500 Cheyenne Crew Cab 350 FI AT AC AM FM 9 000 GVW 4 10 Limited Slip Rear Local One Owner Maroon 123 000 Miles
\$12,500

MARTIN'S AUTO SALES
 1025 W. Main St. New Holland, PA 17557
 (717) 656-6621

WANT 1963-1969 Ford truck, N model (703)765-0938.

WANTED: all aluminum 18' Tag-along stock or horse trailer w/rear loading ramp, excellent condition. 860/859-5336.

BICYCLE CARRIERS
 SAVE \$\$
 FREE UPS
1-800-WEAVER-D
1-800-932-8373

TRUCKERS
 27' RATCHETS.....\$15.95
 WINCH STRAPS.....\$12.95
 RUBBER T. STRAPS...54¢
 COMPLETE ROLL TARP SYSTEMS
 TIRONIE TARPS
 (800) 874-2928 • FAX: (717) 584-3127

CARS	TRUCKS	MPV'S
'95 Chevy Monte Carlo A/C A/OD, PDL, PW, AM/FM Cass, One Owner, 26,000 Miles	'89 Ford F-250 XLT 6600 GVW, Light Duty, 6cyl, 5spd, AM/FM, Super Clean	'96 Chevy Blazer LS A/C, Auto, AM/FM Cass, Local Trade, Sharp!!
'96 Ford Taurus GL A/C, A/OD/ PDL, PW, AM/FM Cass, Power Seats, Beautiful Rose	'96 Ford Ranger XLT 6cyl Auto, AM/FM Cass, One Owner, Priced To Sell	'95 Ford Windstar GL A/C, Auto, AM/FM Cass, "3" To Choose From
'96 Ford Mustang CPE A/C, 5spd, AM/FM Cass, V6 Engine, 2,000 Miles	'97 Ford F-150 4x4 S/Cab Lariat, A/C, Auto, AM/FM Cass, Only 9,000 Miles	'93 Ford Explorer Sport A/C, Auto, AM/FM Cass, Must See, Super Clean
'95 Ford Escort LX Coupe A/C, Auto, AM/FM Cass, Only 23,000 Mile	'94 Ford Ranger S/Cab XLT 4x4 A/C, 5spd, AM/FM Cass, Super Nice	'95 Ford Bronco EB A/C, Auto, AM/FM Cass, Fully Loaded
'95 Ford Probe A/C, 5spd, AM/FM Cass, Only 17,000 Miles, Super Clean	'96 Toyota Tacoma S/Cab, 4x4, A/C, 5spd, AM/FM Cass, Just Traded, One Owner	'94 Ford Aerostar XL A/C, Auto, AM/FM Cass, "5" Aerostars To Choose From
'95 Saturn SL1 SDN, A/C, AM/FM Cass, Auto, Beautiful Plum Color, Low Miles	'90 Ford F-150 S/Cab XLT A/C Auto, AM/FM Lots of Extras	'95 Jeep Wrangler 5spd, AM/FM Cass, 4WD, Hard Top, Super Clean, Fun To Drive
'95 Lincoln Continental Full Loaded with Sunroof, Luxury 8cyl, Fun to Drive	'94 Nissan XE 4x4 A/C, AM/FM, 5spd, Only 39,000 Miles Sharp Looking Truck	'95 Geo Tracker 4x4 LSI A/C, Auto, AM/FM Cass, Convertible, Fun To Drive
'95 Mercury Sable GS SDN A/C, A/OD, AM/FM Cass, Super Clean, Well Taken Care Of	'93 Ford F-150 XLT S/Cab A/C, Auto, AM/FM, 29,000 Miles Local Trade	'95 Jeep Grand Cherokee Laredo, A/C, Auto, AM/FM Cass, "5" To Choose From
'96 Pontiac Sunfire SE A/C, 5spd, AM/FM Cass, Only 12,000 Miles, One Owner	'95 Chevy C1500 WT A/C, Auto, AM/FM Dependable Work Truck	'95 Jeep Cherokee Country A/C, Auto, AM/FM Cass, "A Must See"
'93 VW Corrado A/C, 5spd, AM/FM Cass, Sunroof, Rare Beauty With VR6 Engine	'96 Ford Ranger XLT S/Cab A/C, Auto, AM/FM Cass, Low Miles, Must See	'93 Suzuki Sidekick 4x4, A/C, 4DR, 5spd, AM/FM Cass, Sporty

ENGLE-RISSINGER AUTO GROUP

Midway Between Halifax And Millersburg • 717-896-3421 • 1-800-242-8075
 HOURS: Monday-Friday 8:30 AM - 8:30 PM; Saturday 8:30 AM - 3:00 PM



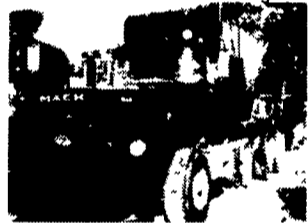
12' Reefer Body,
 under body refrigeration unit,
 Uses 220 electric Has damage



18' Reefer Body
 Thermo-King MD-1 diesel roll up back door also
 has one side door Has damage



1981 Volkswagen Rabbit
 Diesel 4 Spd 177 354 Mi,
 2 Door, Needs Driver-Side Fender



1973-75 Mack Cement Mixers
 10+11 Yard Barrels, 6 Spd, + 13 Spds, 44+
 55,000 Lb Rears, All Runs Excellent
Asking \$8,500



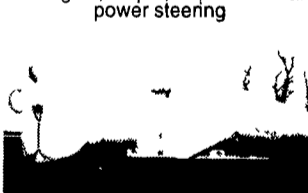
1993 Toyota Pickup
 4 Cyl, 5 Spd Trans, AM-FM Radio,
 A/C, Excellent Condition, High Mileage



1977 Mack R Model tractors,
 300 engine, 5 spd, 38,000 lb rears,
 power steering



1500 gallon Sludge Tank
 w/2cyl Deutz Diesel



Aluminum Tanker/Trailers
 7500 gal and up



New flatbeds available.
 Sizes currently available are 12', 14', 20',
 22' and 24' Racks are also available



3000 Sludge Tank

Wm. Cohen & Sons
Thorndale, PA
 (610) 269-1298
 Call between 7 am - 4:30 pm



Towmotor Forklifts
 4 cyl flat head gasoline, 2000 lb
 capacity, 36" forks, solid tires
Asking \$1,500 Each

1978 GMC Motorhome
 Edgemount, 455, V-8 engine, FWD, 26' Long, 3
 spd. trans, 4 beds, bathroom,
 kitchen, needs work

Hundreds of Used Truck Tires For Sale
 Sizes from 16" to 24"

1979 Crane Carrier Cement Mixer,
 10 Yd Rex Mixer, 250 Cummins,
 8 Spd Trans., 44,000 Lb. Rears
Asking \$8,500

Used Overhead Door For Sale
 18'H x 14'W
Asking \$550

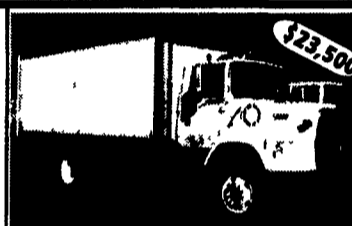
Aluminum Loading Ramps
 9'x10', also some other sizes available

Yale Electric Hoists
 1/2 ton cap., 440 volt,
 single and three phase.
Asking \$380/ea.

Pedestal Grinder
 Baldor 2 Hp., 3 phase, 220 amps
Toledo Basic
 1,000 lb Capacity
Oil Heaters
 250,000 BTU's



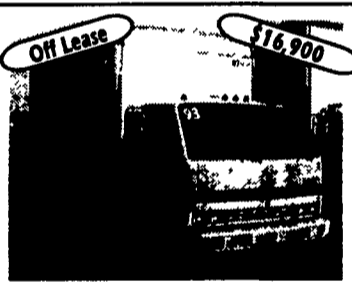
1989 Ford LNT8000, 7.8 210HP.,
 8LL Trans., 52,000 GVW, 22 ft
 Flatbed dump.



1992 FORD LS8000, 7.8 225 HP,
 Fresh Overhaul, 6-Speed, 33,000
 GVW, 185" WB, A/C, 18 Ft. Morgan
 Van Body, w/ "E" Track



1994 Ford LS 8000, 8.3, 210 HP, 6-
 Speed, 33,000 GVW, 118,000 Miles,
 A/C, 24 Ft. Morgan Body
 w/Translucent Roof and "E" Track.



1993 Isuzu NPR, 4 Cyl Diesel, 4 Cyl OD,
 14,250 GVW, 101,000 Miles, 14 Ft Van
 Body



1994 Ford E150 Van, 4.9 EFI, AT-OD,
 6,700 GVW, 104,430 Miles, A/C, White



1994 FORD E350, 7.3 Diesel, AT, 14 Ft
 Van Body, 102,000 Miles, Clean Unit



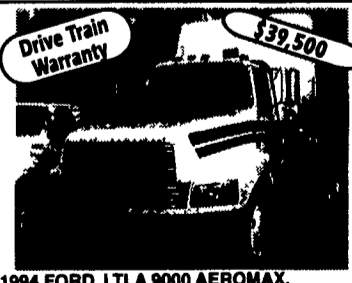
1989 Ford LN9000, NTC 300, 9A Trans,
 34,700 GVW, A/C, P/S, New Galion 10 Ft
 Dump, Pull Plate



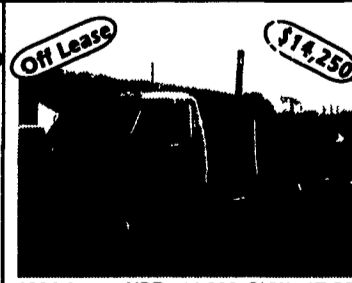
1993 Mitsubishi 18 ft. Van w/Lift Gate,
 190HP Turbo Diesel, 6-Speed, 25,995
 GVW, A/C, Exhaust Brake



1996 Ford F450, 7.3 Power Stroke
 Diesel, 5-Speed, 15,000 GVW, 4,536
 Miles, A/C, PS, Yellow, Supreme 14 ft
 ThermoKing 0° Body



1994 FORD LTLA 9000 AEROMAX,
 Cummins N 14 430 HP, 9-Spd Trans, 12,000
 FA, 40,000 RA on Air Ride, 60" Sleeper
 w/Heat & Air, 227" WD, 298,000 Miles



1994 Isuzu NPR, 14,000 GVW, AT-OD,
 A/C, Cab & Chassis, 138,000 miles



(3) 1994 Ford LTLA 9000 AEROMAX
 12L Detroit Diesel, 430 HP, 9-Spd. Trans
 12,000 FA, 40,000 RA, on Air Ride, 60"
 Sleeper w/Head & Air, 227" WB



KEYSTONE TRUCK SALES

470 Penhar Rd., I-83 at 322 East., P.O. Box 4194, Harrisburg, PA 17111
 Sales Dept. Hours: Monday-Friday 8 am to 5:30 pm



(717) 564-6661 or (800) 669-6235