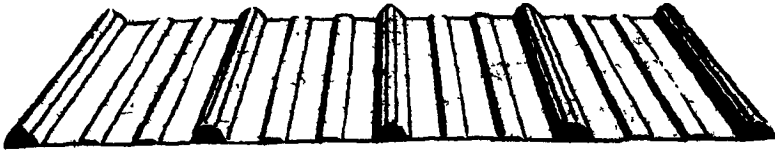


Country Best



Wheeling Corrugating Channelrain® roofing and siding is on some of the best looking buildings in the country.

- High tensile galvanized steel for strength, durability.
- Drain channel and tight laps for dry, snug interiors.
- Wide selection of bright, baked-on contemporary colors.
- Cost efficient, durable, good-looking Channelrain.



MARTIN'S ROOFING

CALL FOR DISCOUNT PRICES! **(717) 532-3460**
 258 Walnut Bottom Rd., Shippensburg, PA 17257
 Rt. 81, Exit 10

GLENWOOD

METALS LLC CUSTOM CUT METAL ROOFING & SIDING

29 gauge

15 colors Painted, Galvanize & Galvalume

26 gauge commercial

12 colors Painted & Galvalume

- .018 mill Finish & white alum.
- 26 ga. & 24 ga. standing seam panels
- trims - screws - nails to match colors

4 Color Special

white - red - green - brown
 In Stock - Ready For Pickup
 No Warranty

Classic Rib Profile

Length	Price
8 ft. Panels	9.60 Each
10 ft. Panels	12.00 Each
12 ft. Panels	14.40 Each
14 ft. Panels	16.80 Each

Special cut length available in these 4 colors at \$1.26 Per Lin Ft. w/2 day Notice

Description	Price
75 Pcs. 3x14' Galvanized	\$14.30
18 Pcs. 3x19' Brown	\$20.52
48 Pcs. 3x8' Brown	\$8.64
12 Pcs. 3x25' Black	\$27.00
8 Pcs. 3x16' Black	\$17.28
10 Pcs. 3x15' Black	\$16.20
24 Pcs. 3x14' Black	\$15.12
34 Pcs. 3.12' Brite Red	\$12.96
34 Pcs. 3x10' Brite Red	\$10.80
6 Pcs. 3x8' Brite Red	\$8.64

Various cuts of other lengths and colors blue - green & galvanize 1.05 / ft.

265 Meadow Valley Rd., Lititz, Pa.

717-626-9674 • 800-582-9956

717-627-6892 - Fax

Mailing Address: P.O. Box 956, Ephrata, PA 17522

Industrial Paint Liquidation
 Just received thousands of gallons of highest quality industrial grade paint from military base closing and cancelled government contracts. These paints were designed for extreme duty in military service, making them far exceed typical application in commercial or farm use. Buy now while available-most can be stored for several years.
You can't buy better paint!
 Epoxy - \$14/gal.
 Polyurethane - \$12/gal.
 Alkyd Enamel - \$10/gal.
 Specialty Coatings \$10-\$14/gal.
 \$40 to \$60 value.
 Call for color availability. 10 gallon min. purchase.
 2 locations - Honey Brook and Bridgeport, PA
 Heritage Equipment, Inc
 610-942-4116

\$ WHOLESALE \$

1/2" to 8" PIPE 1/2" to 8"

Prime, secondary, structure pipe
 Farmers, Manufacturers, Fabrication
 — Will Cut To Your Size Needs —

STEEL TUBING
 1 1/2" Sq. 3 1/2" Sq. 2"x2" Sq. 2"x4" Rect.
 2 1/2" Sq. 4"x4" Sq. 3"x3" Sq. 3"x2" Rect.
 20' to 24' Lengths 1/4" to 1/2" Thick

BRICKER'S PIPE YARD

717-261-0095 1970 Frank Road
 Chambersburg, PA 17201

EVERGREEN SPECIAL Metal Roofing & Siding

Prices Per Sheet 36" Coverage
 \$36 Per S.Q. \$1.14 Per L.F.
EXCESS INVENTORY REDUCTION!

Color: Evergreen (Dark Green)

195 Pcs.	12'	\$13.68
156 Pcs.	14'	\$15.96
351 Pcs.	16'	\$18.24
173 Pcs.	16' 2"	\$18.43
219 Pcs.	18'	\$20.52
109 Pcs.	20'	\$22.80
110 Pcs.	22'	\$25.08
195 Pcs.	24'	\$27.36

Excess Inventory, No Warranty
 With Warranty \$45.48/s.q. \$1.44/L.F.
 Special Ends 4/25/98

Must Bring This Ad To Receive Special

Cut To Length & Delivery Available

A. B. MARTIN ROOFING

Metal Roofing & Building Supplies

150 Slate Road • Ephrata, PA 17522

717-445-6885 1-800-373-3703

Mon - Fri. 7 a.m. - 5:30 p.m.; Sat. 7 - 11.30 a.m.

Carpentry & Masonry Work

- Garages
- Pole Barns
- Horse Barns
- Additions
- Timber Frame Structures
- Roofing Metal, Shingles, Cedar

BEILER'S GENERAL CONSTRUCTION
 (717) 786-8293

Call us for a price!

We specialize in agriculture & residential repairs & construction

Fully Insured
 Serving PA, MD, DE & NJ

DOES YOUR BARN NEED GUTTER?

- 5" & 6" Old Style 1/2 round - white, brown, galvanized
- New face board
- Rafter tails

We install Vinyl Replacement Windows

- Bows
- Bays
- Casements
- Sliders



and

SENENIG'S SPOUTING

265 Meadow Valley Rd., P.O. Box 936, Ephrata, PA 17522

717-733-7160, 717-627-6886

1-800-247-2107

ELAM S. KING

Custom Builder Design and Build

Custom Homes, Pole Buildings and Horse Barns
 Concrete, Masonry and Carpentry Work

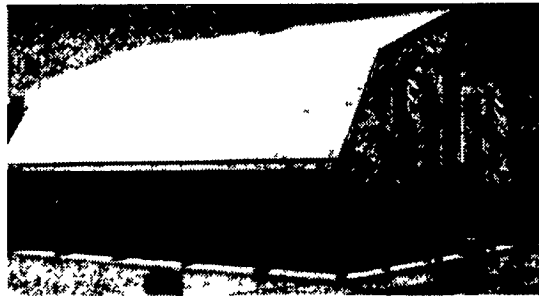
Driver/Worker needed to work with carpenter crew on horse barns & log homes. Immediate opening. Benefits.

Custom Log Homes

Different Styles & Sizes Available
 Call for Special "Spring" Pricing



80'x100' Indoor Arena w/2 rows of 10'x12' stalls & tack room



34'x34' with hay storage



34'x84' Barn with hay storage, tack room, 12'x12' stalls

911 Strasburg Pike, Strasburg, PA 17579

• 717-687-7829 (Leave Message)