

## Managing Beef On Pasture Meeting Set

LAWRENCEVILLE (Tioga Co.) — A Managing Beef On Pasture meeting is set for Thursday, April 23, from 7 to 9 p.m. here at the Lawrenceville Township Building.

Pasture management in Steuben County will be discussed by Carl Albers, Cornell Cooperative Extension of Steuben County. A presentation on managing beef cattle on pasture is offered by David Hartman, Penn State extension,

Columbia County, and on pasture soil fertility - what's need by J. Craig Williams, Penn State extension, Tioga County.

More and more farmers in the Twin Tiers are putting management intensive grazing practices to work on their farms. The result is better grass growth, higher stocking rates, and more meat produced per acre.

All this is possible because of the use of high-tensile electric

fence, polywire, tread-in posts, and low cost watering systems.

Increasing returns from pasture requires a concerted effort to improve pasture yields and quality, stocking farms to capacity, extending the grazing season as much as possible, and doing an excellent job in marketing the finished product.

Please call Steben County at (607) 776-9631, ext. 2300 or Tioga County at (717) 724-9120.

## NOTICE

### EXTENDED PARTS DEPT. STORE HOURS

EFFECTIVE MONDAY, APRIL 6, 1998

To Better Serve You During  
The Busy Planting Season

APRIL - MAY - JUNE

MON. THRU FRI.

7:00 AM - 8:00 PM; SAT. 7:00 AM - 3:00 PM

133 Rothsville Station Rd.

P.O. Box 0395

Lititz, PA 17543

(717) 626-4705

1-800-414-4705

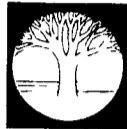
**BINKLEY-HURST  
BROS. INC.**



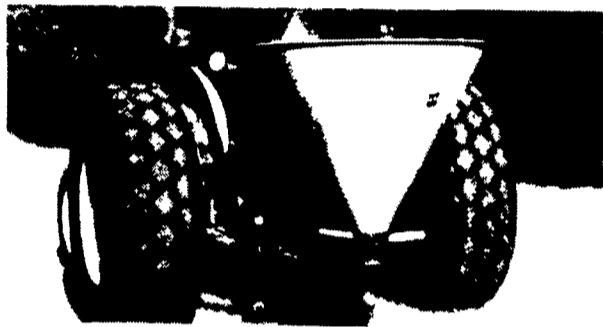
**Farm Plan**  
A Service of FPC Financial

FAX 717-626-0996

## LAND PRIDE



### THE LEADER IN SPIN-TYPE SPREADERS

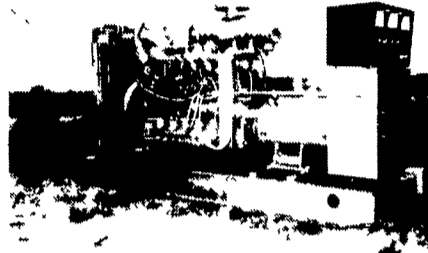


#### FERTILIZER SPREADER

- 3 hopper sizes available: 550, 740 and 995 lbs.
- One-piece, seamless construction allows material to fall freely as hopper empties
- Fertilizer can be delivered completely to the left or right or in a full width pattern.
- Application rate is from 44 lbs. to 890 lbs. per acre
- 50 ft. spreading width

The Land Pride family . . . quality from the ground up.

## MARTIN MACHINERY



#### GENERATORS

- Sales ★ Service ★ Rentals  
\* Complete Generator Systems  
\* PTO \* Portables \* 2-1600 KW  
"We Service It If You Have It  
And Sell It If You Need It"  
34 W. Mohler Church Rd.  
Ephrata, PA 17522  
Tel: 717-738-0300  
Fax: 717-738-4329

#### ALL PURPOSE CART

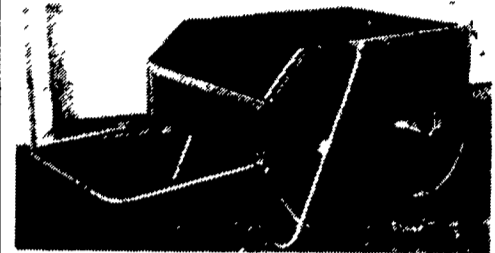


Photo Is 15 Cu. Ft. Size

- 15 Cu. Ft. Model—assembled with removable front & back, 26" pneumatic tires  
\$165.<sup>00</sup>
- 8 Cu Ft Model—assembled with solid front & removable back, 20" pneumatic tires.  
\$138.<sup>00</sup>

#### Elam M. Ebersol

558 Gibbons Road  
Bird-In-Hand, PA 17505  
Leave Message

717-661-9131

Dealer Inquiries Welcome

BUY, SELL, TRADE OR RENT THROUGH THE

## CLASSIFIED ADS

PHONE: 717-626-1164 or 717-394-3047

FAX 717-733-6058

Mon., Tues., Wed., Fri. 8 AM to 5 PM; Thurs. 7 AM to 5 PM

### Pennsylvania

**Betts Equipment**  
3139 Windy Bush Road Rt 232  
New Hope, PA 18938  
215-598-7501

**Thomas L. Dunlap**  
Rt 220, Main St Exit  
Jersey Shore, PA 17740  
717-398-1391

**Marshall Machinery, Inc.**  
Route 652  
Honesdale, PA 18431  
717-729-7117

**C.B. Hooper & Son, Inc.**  
Main Street  
Intercourse, PA 17534  
717-768-8231

**Eckroth Bros Farm Equipment**  
Rd 2, Box 24A  
New Ringold, PA 17960  
717-943-2131

**Nicarry Equipment Co.**  
RD 2, Rt 61, 3 Miles S  
of Leesport, Reading, PA  
610-926-2441

**C.B. Hooper & Son, Inc.**  
East Main Street  
McAlisterville, PA 17049  
717-463-2191

**Eckroth Equipment Co.**  
4910 Kernsville Rd  
Orefield, PA 18069  
610-366-2095

**Norman D. Clark & Son, Inc.**  
Honey Grove, PA  
717-734-3682

**Deerfield Ag & Turf Center, Inc.**  
RR 2 Box 212  
Watsonstown, PA 17777  
717-538-3557

**Hines Equipment**  
RT 220, Belwood, PA  
814-742-8171

**Pikeville Equipment Inc.**  
RD 2, Oysterdale Road  
Oley, PA 19547  
610-927-6277

**Detlan Equipment, Inc.**  
141 East Main St  
Silverdale, PA 18962  
215-257-5177

**Keller Brothers**  
R7 Box 405  
Lebanon, PA 17042  
717-949-6501  
1950 Fruitville Pike  
Lancaster, PA 17601  
717-569-2500

**Stoltzfus Farm Service**  
Cochranville, PA  
610-593-2407

**Dunkle & Grieb, Inc.**  
RR 2, Box 14  
Centre Hall, PA 16828  
814-364-1421

**M.S. Yearsly & Sons**  
West Chester, PA  
610-696-2990

**Stouffer Bros Inc.**  
1066 Lincoln Way West  
Chambersburg, PA 17201  
717-263-8424

### New Jersey

**Rodio Tractor Sales**  
North White Horse Pike  
Hammon, NJ 08037  
609-561-0141

**Frank Rymon & Sons, Inc.**  
RD 3, Box 355  
Washington, NJ 07882  
908-689-1464

#### Warren County Service Center

228 Route 94  
Blairtown, N.J.  
908-362-6916

### FARM EQUIPMENT

00 Frick sawmill, steel track, three blades 58", 52", 48", Debarker, two blowers, 20" steel carriage w/five head blocks, hydraulic log turner, 27" Frick edger, extra shaft, wheels, axels, teeth & shenks. (717)748-1095.

1086 IH 4 post, rebuilt engine, good TA, dual hyd, dual PTO, new paint, \$10,700; 4255 JD 4WD, CAH, 15-spd., PS, 1991 model, \$32,000. 717/922-3340.

10' Howser rotary mower, \$2700. NH 358 grinder mixer w/scales, call for price. 717-637-0192

10' U.F.T., no-till drill w/ grass seed, 5000 series, 382 acres, \$4500. MF 1100 diesel, 92hp, 38" tires, original paint, top link, front weights, \$6000. 717-534-1253

133 Steiner Mixer, new auger, new gear box. 540-828-4143

135KW generator, caterpillar set w/Cummins engine. (301)432-7793 (301)432-8332

13' grain head for John Deere combine. (610)759-2777.

1400/20 tube-type 12 ply NDT tires. New \$275/ea. Call John 814-834-1018.

140 Farmmaster mixer, \$2450. 610-273-9060 call for details.

16' Dunham cultimulcher, good condition. 717-792-3216

1755 Oliver, 1-owner, year-around cab, fresh clutch and overunder 70% rubber, 5300 hrs., nice tractor, \$8100. Hoppaugh Farms. Bradford Co. 717-596-2532

1850 Oliver diesel, over/under direct, cab, no AC, clean tractor, \$7000. 410-822-8754

18' Krause Landsman, good quality, \$7900. Zeisloft 800/919-3322.

1942 Massey Harris 101-Jr twin power, serial #397928, restored, good condition. Montgomery Co., PA 610/754-7691.

1952 Farmall Super M, rebuilt engine, very nice rear rubber and sheet metal, WF, (only needs paint) \$2400 OBO. 908-561-5047

1973 Ford 3400 tractor, live PTO, 3pth, heavy duty front end, gas, 5' fully hydraulic sickle side mount mower, \$5,100. Evenings and Saturdays, (717)532-2007.

1977 1T4W/D pickup sprayer, 500G S.S.J. blue tank and pump. 20" wheels 40' hydraulic booms W.F. marker 410-531-2660 evenings.

1980 Case 4690 4x4, 225hp, only 4000 hrs, duals, good looking original paint, \$19,700. Zeisloft Used Eq. 800/919-3322.

1981 JD 6620 combine, looks great, runs great, like new rubber, lots of maintenance records available. Zeisloft from Bloomsburg 800/919-3322.

1984 IH-1480 combine, electro hydraulic controls, 4wd, grain loss monitor, sharp w/high hrs. \$25,500. 717-776-6869 eves. 717-423-6996 daytime. Cumberland County.

1986 Case 1896 farm tractor, 5.9L Cummins turbo diesel, full cab, 3pt hitch, PTO, \$10,000. 717-846-2600

1987 Deutz Allis 6250 diesel tractor w/7' 455 loader, PS, PB, new tires, very good condition, \$12,500 OBO. 717-345-4362

1988 Komatsu D66S, ER-OPS, V.G. undercarriage, salt tracks, work ready, \$31,900; new set Berco D4C salt tracks CR4774-39-16, \$4400. 717/445-5297.

1989 JD 4255, MFWD, cab, JD 280 loader, 15-speed power shift, \$48,000 OBO. 540-896-6946 M-S

1991 Case IH 5130 Maxxum, like new, only 800 hrs, \$28,900. Zeisloft Used Eq. Bloomsburg, PA 800/919-3322.

1991 JD 4455, only 1900 hrs, CAH, fancy condition, reduced to \$43,500. Zeisloft from Bloomsburg 800/919-3322.

19' IH S model w/2 year old Scott silage dump, 466DT diesel, nice truck, \$22,000 OBO. Zeisloft Eq. 800/919-3322.

19' Krause disc, nice paint, good blades, \$4450 at Zeisloft, 800/919-3322.

(1) Wic Grain Cart, \$100. (1) Ubler 808 Silage Cart, \$1200. (1) Patz Gutter Cleaner, complete, 200' chain, \$1200. (1) Acorn gutter cleaner complete, make offer. 717/437-2811.

(2) 48" exhaust fans, complete. Cumberland Co, (717)776-7236.

25hp Hydrovane air compressor, 230/460V, G.E., complete unit, \$850. 717-354-6353 Vernon or Barry

2700 gallon Houle spreader, large flotation tires, like new. (301)264-4662

2745 MF tractor, 24' Int. disc, 27' packer. MF 880 plow, 6x18. JD tractor 3020. (609)267-5858.

2-Cylinder Wisconsin engine w/reduction clutch & starter, \$1000. Daniel Yoder, RR 7, Box 60, Muncy, PA 17756

2 cylinder Wisc. engine w/ reduction clutch and starter, good condition, \$1000. Daniel Yoder, RR 7, Box 60, Muncy, PA 17756.

(2) JD 4 row front cultivators, \$750/each. 609-567-4186