

BUSINESS ♦ NEWS

52-Inch Bandmill Cuts Butt Logs

BARNEVELD, N.Y. — Engineers for Hud-Son Forest Equipment Joe Fazekas and Kevin Gustavson build a 52-inch wide opening bandmill.

A customer from Pittsfield, Mass., asked the owners of the company, Dan Hudon Sales, Inc., where to purchase a mill of this size — they did not have the answer. The customer then asked if Hudon could custom build a mill this size — and Hudon accepted the challenge.

The company's 52-inch bandmill is used for cutting large butt logs, driftwood, and for custom sawing of furniture. As a result



The company's 52-inch bandmill is used for cutting large butt logs, driftwood, and for custom sawing of furniture.

Hud-Son Forest Equipment plans on expanding their custom building service.

Northeast Agri Systems Hires Weinstein

LITITZ (Lancaster Co.) — Larry Weinstein of Lancaster has joined Northeast Agri Systems, Inc. as the corporate controller.

His responsibilities include all financial and management information systems. He has more than 20 years of experience in the agriculture industry. He was vice president of finance for Round Hill Foods, a turkey growing and processing company in New Oxford, the controller for Brown's of Carolina, a hog growing company in Warsaw, N.C. and the vice president of finance for White Oak Mills, a feed mill and hog growing operation in Elizabethtown.

Weinstein is a CPA and a member of the Institute of Management Accountants. Education includes a bachelor's degree in accounting



Larry Weinstein

and a master's degree in business from York College of Pennsylvania.



Eight New Front End Loaders Available

MOBILE, Ala. — Bush Hog's eight new front-end loaders fit tractors from 12 to 130 HP. Packed with new features, they deliver lift capacities from 725 to 4,650 pounds, lift heights from 76 to 152 inches, standard quick attach system for attachments, and high-performance hydraulic control valves.

The new front-end loaders come in six colors to match tractors.

For more information, contact Bush Hog, Dept. PF-Loaders, P.O. Box 1039, Selma, AL 36702-1039.

Wing-Fold Planter Offers Narrow-Row Choices

ATLANTA, Ga. — White introduces a new wing-fold planter that offers growers three popular narrow row options — 12-row 20 inches, 12-row 22 inches, and 15-row 15 inches.

The planter is available in two

separate versions, 6512 (12-row) and 6515 (15-row). Both versions have the wing-fold design for quick transport to the next field.

When the planter is transported from field to field, the hydraulic folding mechanism can be oper-

ated from the tractor cab. The frame fold function releases the retaining latch automatically, and the frame has a telescoping tongue that extends in the transport mode to allow extra room between the new tractor tires and the folded wings. The tongue then retracts in the planting position to optimize turning efficiency in the field.

Other Model 6512 and 6515 Wing Fold features include White's exclusive positive air seed metering system that is located at each row unit. Another White exclusive — the micro-processor controlled infinitely variable seeding rate adjustment. This permits the operator to match

seeding rates to the soil and nutrients available to the crop being planted.

New Holland Signs \$35 Million Combine Deal With Russia

AMSTERDAM — New Holland N.V. (NYSE:NH), one of the world's leading producers of agricultural and construction equipment, announced the sale of more than 200 TX™ combine harvesters to Bashimpex in the Bashkortostan Republic of The Russian Federation.

The combines will be built in New Holland's Zedelgem, Belgium facility. Delivery of the combines will take place prior to the 1998 harvest season. The agreement, which includes attachments, spare parts, and service development, is worth up to \$35 million.

"New Holland is very pleased to have the opportunity to contribute to the continued growth of agricultural production in the Bashkortostan Republic," said

Case Introduces Windrower

RACINE, Wis. — Case Corporation introduces the Case IH 8870 SP Windrower to meet hay producers' requests for greater durability, reliability, performance, and comfort in a self-propelled windrower.

"We've re-designed our heavy-duty machine from header to cab to chassis to develop a new industry standard for windrowers," said Bruce Spidle, Case IH's livestock production systems product manager.

Created specifically for a self-propelled windrower, the model features an all-new spacious cab. Maximum visibility is attained through the 73 square feet of glass, including a curved front windshield. A full-length right-hand service access door is also included.

"To this platform, we've added some of the best features from the cab design of our Axial-Flow® combines and Cotton Express® cotton pickers, such as the multi-function propulsion lever and a similar monitor console," said Spidle. "Together, these features create a more ergonomically-advanced cab to increase operator comfort."

The industry's first, optional in-cab swath/windrow adjustment allows the operator to make on-the-go changes to this windrow formation to respond to changing crop conditions. Other cab improvements include a standard AM/FM weatherband radio, optional buddy seat, optional windshield wiper, and more lighting for increased visibility during night time operation.

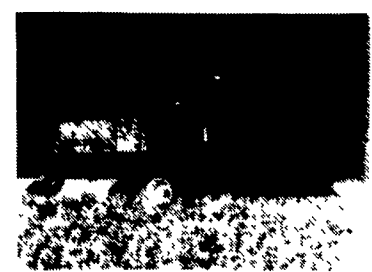
In addition to the enhanced operator environment, Case has upgraded the durability of the header by adding center bearing supports for the dual augers. The header's dual auger design promotes more uniform feeding and less crop-to-metal contact, both critical factors in preserving forage quality.

The header is available in 14-foot and 16-foot widths. Customers can choose from either rubber-on-steel or steel-on-steel intermeshing conditioning rolls to meet their particular applications. An optional header reverser is also now available to remove slugs without leaving the operator's seat.

The machine is equipped with a 110-horsepower, 4-cylinder Case

will be supported by export credits available in Belgium, and requires the concurrence of the Ministry of Finance.

While the Bashkortostan Republic is well known internationally for oil and gas extraction and refining, Bashkortostan also ranks third in the Russian Federation in overall agricultural production. Bashkortostan has identified agriculture and food processing as priority development areas, and increasing the productivity of the agricultural sector is a key element of the Republic's growth strategy. With its superior threshing and separation capacity, and proven reliability, the New Holland TX combine harvester was selected for use in the coming harvest season.



Case Introduces the 8870 SAP windrower. This self-propelled windrower has been designed to meet hay producers' requests for greater durability, reliability, performance, and comfort. The all-new cab reflects common features found in cabs on Case IH combines and cotton pickers.

IH turbo-charged engine to further improve the 8870's power and performance, especially in tough cutting conditions. A larger 60-gallon fuel tank carries an ample supply of fuel for a full day of cutting. Larger 19.5L x 24 drive tires and 14L x 16.1 rear tires have been added for a significantly smoother ride, especially in fields with center pivot irrigation systems or corrugations.

BASF Plans To Introduce Corn Herbicide

RESEARCH TRIANGLE PARK, N.C. — A combination of the No. 1 postemergent broadleaf herbicide and the No. 1 postemergent grass herbicide soon will be available for corn growers.

Celebrity™ herbicide will provide postemergent grass and broadleaf weed control in a single

product. BASF Agricultural Products has entered into a supply agreement with DuPont Agricultural Products in which DuPont will provide nicosulfuron, the active ingredient found in Accent®, to BASF for use in combination with BASF broadleaf herbicides.

With this agreement, BASF plans to introduce Celebrity for the 1998 growing season. Celebrity is a combination of nicosulfuron and dicamba, an active ingredient in Banvel®, Clarity®, and Marksman® herbicides. Celebrity has been submitted to EPA for review and commercialization is expected during the spring of 1998.

With this agreement, BASF plans to introduce Celebrity for the 1998 growing season. Celebrity is a combination of nicosulfuron and dicamba, an active ingredient in Banvel®, Clarity®, and Marksman® herbicides. Celebrity has been submitted to EPA for review and commercialization is expected during the spring of 1998.

"Celebrity will offer postemergent control of tough grass and broadleaf weeds like foxtail, woolly cupgrass, cocklebur, lambsquarters, waterhemp, and Canada thistle," said Barney Gallagher, BASF strategic marketing manager. "This is an excellent weed control option with a single product.



White introduces a new wing-fold planter that offers growers three popular narrow row options — 12-row 20 inches, 12-row 22 inches, and 15-row 15 inches.

seeding rates to the soil and nutrients available to the crop being planted.

"Celebrity will offer postemergent control of tough grass and broadleaf weeds like foxtail, woolly cupgrass, cocklebur, lambsquarters, waterhemp, and Canada thistle," said Barney Gallagher, BASF strategic marketing manager. "This is an excellent weed control option with a single product.

"With Celebrity, growers can elect a postemergent weed control program based on field history and planting conditions. Celebrity also can be used as a part of a program with Frontier® herbicide and other preemergent products for optimum season-long control," he said.