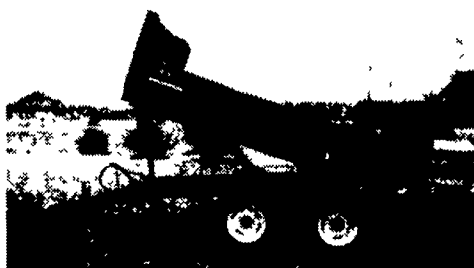


FARM DUMP TRAILERS

(Direct from the Manufacturer)

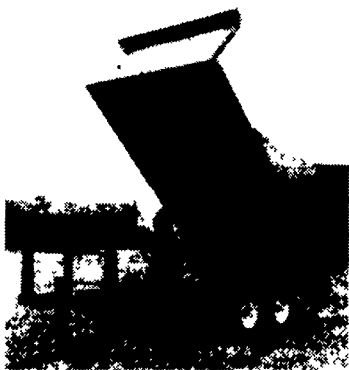
6-Ton Dump Trailer

- 10 ft. x 7 ft.
- Floating Tandem Axle
- 3 ft. Front, 3 ft. Tailgate & Grain Chute
- 16 in. Extendable Sides
- 10 ga. Floor & Sides
- 11Lx15 Flotation Tires
- 2-Way 4 in. x 24 in. Hydraulic Cylinder



7-Ton Road Dump Trailer

- Fifth wheel or bumper type
- 16 ft. x 8 ft. deck 3 ft. front rack and pockets side & back
- D.C. hydraulic pump & battery mounted in locking tool box.
- 12 ton drop leg jack
- 10 ga. floor
- 6x3x3/16 tube main frame
- Sealed beam lighting
- 7000 lbs. per axle rating
- Electric brakes on both axle
- 16" tires on white spoked rims
- \$6400 U.S. delivered in Northeast U.S.A.

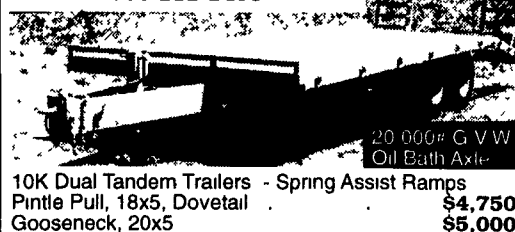


BERKELMAN'S WELDING

RR 7, AYLMEER, ONTARIO, CANADA N5H 2R6
(519) 765-4230

Appalachian Manufacturing, Inc.

330-222-2468



20,000# G V W Oil Bath Axle
10K Dual Tandem Trailers - Spring Assist Ramps
Pintle Pull, 18x5, Dovetail
Gooseneck, 20x5 \$4,750
\$5,000



24' Gooseneck, 4' dovetail, 12,000# G V W, 6,000# axels w/easy lube, electric brakes, 7 50-16 tires, breakaway kit, ramps w/pressure treated deck, standard \$2,950



16' Car Hauler, diamond plate deck with W/D rings, self storing ramps, 7,000# G V W, 3,500# axels w/elect brakes, 82" between wheel wells, breakaway kit incl \$1,495



21' Low Profile, 10,000#, axel w/easy lube, elect brakes, pressure treated deck, 10,000# G V W, gooseneck \$3,100
Bumper pull \$2,950

We Special Build For Any Need!

35 TRUCKS & TRAILERS

BICYCLE CARRIERS

SAVE \$\$ FREE UPS
1-800-WEAVER-D
1-800-932-8373

72 White T-A Truck

Tractor Conv. 318
Detroit. Good
Rubber. Inspected.
Good Cond.
Motor is Tired.
\$1,200 OBO
717-653-4830

MOTORS

New & Rebuilt
350, 366, 427, 454
6.2 Diesels
Rebuilt & Used
Will Install
Roll Back Service,
(at cost)
717-762 6415

150A farm, completely re-modeled 2-story farm-house, renovated barn, many outbuildings, 1-mile from Millersville, Perry, Co. \$379,900. 717-249-7939 after 5pm.

159 Acres, 100 acres wooded, 50 acres cleared. Little Cove area of Franklin Co. STRA-WOOD REALTY/DAVE MCLU-CAS 717/597-0234 or 717/328-5629.

170 acre dairy and poultry farm, Millintown, Juniata Co, PA. (717)436-8146.

18 acres for RENT, Strasburg Township, (717)786-3080.

200 acre farm in Steuben County, NY. 30 miles west of Corning, 10 room house. Barn for 40 cows, 75 tillable, 80 pasture, 40 woods, gravel pit on property, good deer hunting. \$129,000 Lancaster Farming L-97, Box 600, Ephrata, PA 17522

20.48 Secluded acres, no road access, wooded w/ small stream, excellent hunting. Clearfield County. \$15,000. 717-653-1274

27+ Acres, 1/2 tillable, pasture, good timber, pond. Artesian well, 2-story, 3BR, small bank barn, surrounded by Amish/Mennonite. Price reduced. 717-743-7332 days 717-374-9201 evenings.

2 acre approved building sites, Harmonyville, N-Chester Co, good soil, beautiful views, by owner, \$69,900 and up. (610)469-9445.

2 PROPERTIES ON MARYLAND'S EASTERN SHORE: Well built rancher, 4A, spring fed pond, located on MD beautiful eastern shore. 3BR, 2-baths, 2-car garage. Small farm, nearly new Cape Cod, 24A, 4BR, 2-baths, near hunting preserve, 3-stall horse stable, wonderful country property, zoned agricultural. LONG & FOSTER, Joyce Hollingsworth, 1-800-447-1419 ext. 244.

3/4 miles off I-78, just off I-83. New 3BR, 2-bath, full basement, huge decks, high wall garage on 1/3 acre. 5% D.P. or 100% VA financing. GREAT DEAL! HOUCK HOMES, INC. RT 61, Shoemakersville, PA 610-562-5128

378A, 60-cow barn, pipeline, bulk tanks, Sealstore concrete bunk silos, new free stall heifer barn, 4-bay machine shed, nice 5 bedroom home, trout pond, excellent deer hunting. Southern Madison Co., NY. Owner retiring. 315/691-2888.

3 acre farmette: 16x56 new 6-stall bank barn framed w/ metal siding, 24x24 garage, ranch home, \$90,000. Northumberland County, (717)286-0424.

40 Acre farm near Gratz (Dauphin Co.). Farmhouse with large outbuildings. 717/362-3333.

435 Acre Dairy Farm, Central Wisconsin (Thorpe). Free stall barn w/milking parlor, 3 silos, outbuildings, house. (715)669-5191.

45'x60' late 1800s barn w/ slate roof & 45'x18' extension, in fair condition. Best offer. Must remove & clean site. 610-746-2543.

94 ac. farm near Canton, PA. Mostly tillable. Barn for 56 milkers on pipeline. Long pole barn attached to barn can hold at least 50 head of dry stock. Pole barn for machinery. 2 cement silos w/unloaders. 3/4 BR house. Also house trailer. \$196,000 w/50 cows and machinery. Lancaster Farming L-88, PO Box 609, Ephrata, PA 17522

Acreage, farm, etc, call Jackie, Smith & Associates RE. BH & G, (1800)766-4414.

EBY USED EQUIPMENT

BODIES

- 18'x96" Cattle Body
- 1991 Eby 19'x8'x7'6" Horse & Cattle Body
- (2) 10' Eby Cattle Bodies
- (1) 16' Wooden Cattle Body
- 12'x92" Eby Cattle Body

GOOSENECK

- 1989 Steel Mertz 24'x8'x6'6"
- 1987 Steel Chaperal 18'x6'x7'
- 1997 Custom Fab Alum.

22'x7'x7'

NEW IN STOCK GOOSENECKS

- 24'x8'x6'6" Wrangler
- 17'x7'x7' 3-Horse Slant Load

M.H. Eby, Inc.

1194 Main Street (Route 23)
Blue Ball, PA 17506
(717) 354-4971
(800) 292-4752
FAX (717) 355-2114
4435 State Route 29
West Jefferson, OH 43162
(614) 879-6901
(800) 752-0507
FAX (614) 879-6904

When agriculture is your life, the equipment choice is Eby

EBY is the leading manufacturer of aluminum bodies and trailers for agri-transportation. Our products are designed for superior strength, reduced weight for greater payload capacity, minimum maintenance and higher resale value. In addition to premium standard features, we offer full custom options built to your specs.

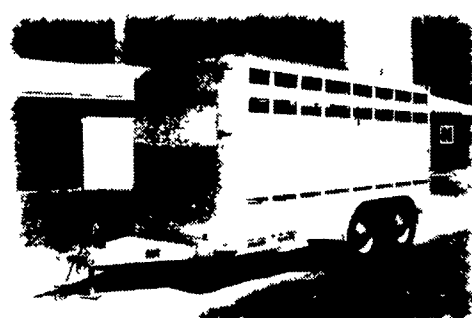
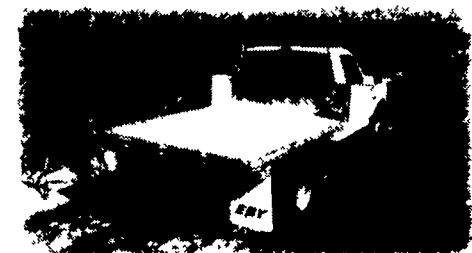
EBY's complete line includes models for every requirement:

- Gooseneck Trailers- lengths 14' - 32'; widths 7', 7'6", 8' and 8'6"
- Bumper Hitch Trailers- lengths 12' - 18'
- Grain Bodies- lengths to 24', plus landscape and general purpose dumps to 12'
- Flatbed Bodies- lengths to 32' in 5 widths
- Landscape Bodies- lengths to 12'

For quality equipment and customer service that works as hard as you do, nobody offers more than EBY.



Blue Ball, PA (800) 292-4752



Call for FREE color literature.

KEIM

(717) 768-8225
(800) 223-KEIM

RT. 30 Lincoln Highway East
Paradise, PA 17562

YOUR TRUCK, VAN & 4x4
HEADQUARTERS
1-800-223-KEIM



91 CHEVY SILVERADO
Extended Cab, 4x4, V8, Auto,
PW, PL, A/C



95 CHEVY SILVERADO 4X4
3/4 T Extended Cab, 4x4, Auto,
A/C, 35,000 Miles



98 CHEVY DUMP TRUCK
3500 HD 4x4, 12,000 GVW



91 GMC EXTENDED CAB
Sierra, 2 WD, Silverado, V8,
Auto, A/C, PW, PL



94 GMC SLE
Extended Cab, V8, 2WD,
Auto, A/C



94 CHEVY SILVERADO J71
Shortbed, V8, Auto, U/C, PW, PL,
51,000 Mi.



97 CHEVY REG. CAB
3/4 Ton, Silverado, V8, Auto,
A/C, PW, PL



98 CHEVROLET G30
CARGO VAN
Auto, A/C, Adnan Upfitters
Custom

36 REAL ESTATE

10.7A of virgin timbers w/ trout stream, bridge and sand mound septic. Near Little Buffalo State Park, Perry Co., PA. JACK GAUGHEN REALTORS 717-432-0029 (Cindy Michaud)

114 acres, trailer, old house, 32x54 pole barn, deep well, septic, plenty deer/ turkey, Troupsburg, Steuben County, NY. \$81,000. Call Ray after 5pm. (814)367-5537.

120 Acre ranch for sale in southwest Missouri. Farmhouse, machine shed, 2 barns. Deep well, 2 springs, 6 ponds. \$195,000. 417/452-3445.

13A Farmette, 10 room home, outbuildings, additional acreage available. Sale by owner. Near Gratz, PA 717-682-9785 Daulphin Co. Amish settlement