

**35 TRUCKS & TRAILERS**

<p><b>ALL STEEL REPLACEMENT TRUCK BED</b></p>  <p>7'x70" W or 80"W 8 1/2' Lx80"W or 90"W 10 Lx8"W, 12'Lx8"W</p>	<p><b>Quality Trailers Built Locally By "PA International"</b></p>	<p><b>Highway Hydraulic Dump</b></p> <p><b>BRI-MAR</b></p>  <p>5'x8', 3000# \$2,150 5'x8', 5000# \$2,495 6'x10', 7,000# \$3,195 6'x10', 10,000# \$3,495 7'x12', 10,000# \$3,995</p> <p><b>FREE BATTERY</b></p>
<p>Also Available In 4'x7' and 4'x8'</p> <p>5'x8' Starting at \$650 5'x10' Starting at \$695</p>  <p>UTILITY (TILT OR GATE MODEL) SIZES 5'x8', 5'x10' 2000# GVW - 5'x10' 6'5'x10', 6'5'x12', 3000# GVW</p>	<p><b>Car Dollie</b></p>  <p>Sale \$795</p>	<p><b>LOW PROFILE DUMP TRAILERS</b></p> <p><b>BRI-MAR</b></p>  <p>6'x10' GVW low profile dump trailers w/ landscape gate</p> <p>7,000# \$3,495 10,000# \$3,895</p> <p><b>FREE BATTERY</b></p> <p>Starting At \$3995 w/4' Adj. Tail</p>
<p><b>WIDER</b></p>  <p>UTILITY WITH GATE-SIZES 16'x77", 18'x77", 7,000# GVW</p>	<p><b>24' 10 ton w/air Brakes</b></p> <p><b>SALE 3 PT. SNOWBLOWERS</b></p> <p>Call for Prices</p> <p><b>1990 FORD CONVERSION VAN</b></p>	<p><b>GOOSENECK SIZES. 20'x8' 12,000# or 14,000# GVW, 24'x8' 14,000# GVW</b></p> 
<p><b>WIDER</b></p>  <p>CAR HAULER TRAILER- 16'x78" &amp; 18'x78" includes 5' Beavertail 7,000 lb GVW 4' self storing ramps</p>	<p>Over 300 Trailers In Stock Starting At \$475.00 T-Plates DEALERS WANTED</p>	<p><b>Low Profile construction 16'x77" &amp; 18'x77" 10,000 # GVW</b></p>  <p><b>DECK-OVER CONSTRUCTION 14'x7' With Tail, 3000# or 4000# GVW 16'x8' With Tail, 7000# GVW 20'x8' w/Tail 10,000# GVW \$3,295</b></p>

**KUTZ FARM EQUIPMENT, INC.**  
Pine Grove, PA (717) 345-4882 FAX 717-345-2884

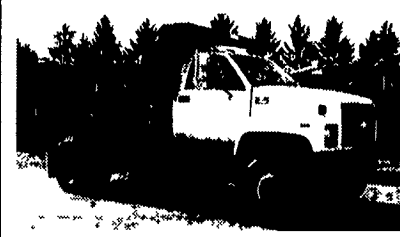
8 AM-5 PM Monday To Friday  
8 AM-12 Saturday Or By Appointment

**LEFEVER BROS. CHEVROLET CHEVY TRUCKS**

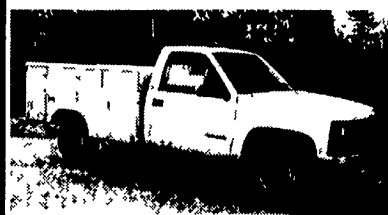
406 U.S. Route 15 North, Dillsburg PA  
Quality Dealer Since 1921 717-432-9611



**98 CHEVY C SERIES**  
33,000 GVW, 5+2 Speed, 215 H.P. Cat Diesel, Air Brakes, 197" Wheel Base



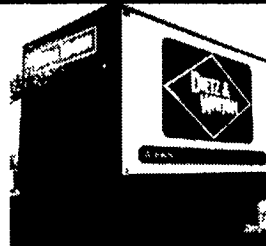
**97 CHEVY C-60**  
Low Pro 10' Gallion Dump, 25,950 GVW, 366 Gas



**98 CHEVY HD 3/4 TON**  
Reading Utility Body, V-8, Auto, AC



**98 CHEVY HD 3/4 TON**  
7 1/2 Western Plow Auto, AC, V-8, Gas



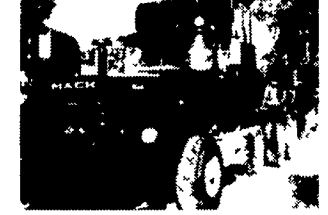
**12' Reefer Body,**  
under body refrigeration unit, Uses 220 electric Has damage



**18' Reefer Body**  
Thermo-King MD-1 diesel, roll up back door also has one side door Has damage



**1981 Volkswagen Rabbit**  
Diesel, 4 Spd, 177,354 Mi, 2 Door, Needs Driver-Side Fender



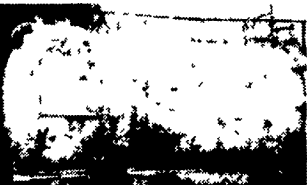
**1973-75 Mack Cement Mixers**  
10+11 Yard Barrels, 6 Spd, + 13 Spds, 44+ 55,000 Lb Rears, All Runs Excellent Asking \$8,500



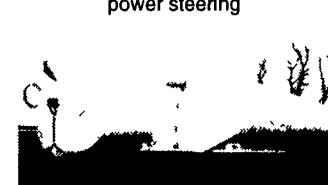
**1993 Toyota Pickup**  
4 Cyl, 5 Spd Trans, AM-FM Radio, A/C, Excellent Condition, High Mileage



**1977 Mack R Model tractors,**  
300 engine, 5 spd, 38,000 lb rears, power steering



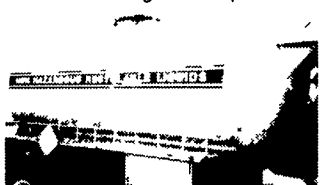
**1500 gallon Sludge Tank**  
w/2cyl Deutz Diesel



**Aluminum Tanker/Trailers**  
7500 gal and up



**New flatbeds available.**  
Sizes currently available are 12', 14', 20', 22' and 24' Racks are also available



**3000 Sludge Tank**



**Towmotor Forklifts**  
4 cyl flat head gasoline, 2000 lb capacity, 36" forks, solid tires Asking \$1,500 Each

**Wm. Cohen & Sons**  
Thorndale, PA  
(610) 269-1298  
Call between 7 am - 4:30 pm

**1976 GMC Motorhome**  
Edgemount, 455, V-8 engine, FWD, 26' Long, 3 spd trans, 4 beds, bathroom, kitchen, needs work

**Hundreds of Used Truck Tires For Sale**  
Sizes from 16" to 24"

**1979 Crane Carrier Cement Mixer,**  
10 Yd Rex Mixer, 230 Cummins, 8 Spd Trans., 44,000 Lb. Rears Asking \$8,500

**Used Overhead Door For Sale**  
18'4" x 14'W Asking \$890

**Aluminum Loading Ramps**  
9'x10', also some other sizes available

**Yale Electric Hoists**  
1/2 ton cap, 440 volt, single and three phase Asking \$350/ea.

**Pedestal Grinder**  
Baldor 2 Hp, 3 phase, 220 amps

**Toledo Scale**  
1,000 lb. Capacity

**Oil Heaters**  
250,000 BTU's

FORD FORD FORD FORD FORD FORD FORD

**KELLER BROS.**

(Buffalo Springs) Lebanon, PA

717-949-2000 or 1-800-363-2767

**HEAVY DUTY & LIGHT DUTY TRUCK CENTER**

3 yr. Unlimited Mileage Warranty Incl. On Most 1990 & Newer Used Vehicles



**1998 FORD F150 SUPER CAB 4X4**  
Short & Long Bed (7 In Stock)



**1995 FORD F250 XLT 4X4**  
AT, A/C, 351 V8, Loaded, Low Miles



**1996 FORD F250**  
Super Cab 4x4, XLT, 25,000 Miles



**1989 E150 CLUB WAGON**  
XLT, V8, A/C, PS, PB (Clean)



**1995 FORD RANGER 4x4 SUPER CAB**  
AT, A/C, Cass, 4L, Low Mileage \$16,770



**1993 FORD F250 4X4 DIESEL**  
XLT, AT, Loaded



**1997 FORD F350 CREW CAB 4x4**  
Turbo Diesels (2 In Stock)



**1995 CHEV K1500 4X4 SILVERADO**  
V8, AT, Low Miles \$18,950



**1997 FORD F350 XL, 4X4**  
Heavy Duty 7.3 Turbo Diesel 2 IN STOCK



**1996 FORD MUSTANG GT**  
V8 5-Spd, A/C, Alpine Am/Fm CD, Alloy Wheels, Low Miles



**1998 FORD MUSTANG GT BOSS**  
SOHC V8, 5 Speed 17" Alloy Wheels All the Toys



**95, 96 & 98 FORD WINDSTARS**  
All w/Dual A/C & Heat, Most Options Starting At \$16,495



**1993 FORD RANGER SUPER CAB**  
5-Spd., Off-Road Pkg, 4x4 "Just Arrived"



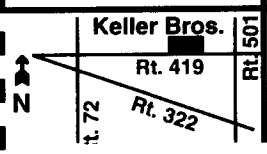
**1995 FORD F150 XLT 4X4**  
AT, V-8, Short Box \$18,655



**1991 SATURN SL2 Coupe**  
Local Trade, Just Arrived



**1991 JEEP WRANGLER 4x4**  
5-Speed, Black "Clean"



**KELLER BROS. FORD HAS SERVED CENTRAL PENNA. AREA FOR MORE THAN 75 YEARS.**

Mon.-Fri. 9-9; Sat. 9-4  
Most Used Vehicles  
Carry a 3 year Unlimited Mileage Warranty

FORD FORD FORD FORD FORD FORD FORD