

Demco, 3pt, 200 gal/oh sprayer, 45' booms, raven electric controls, \$3,000. 43' hyd fold spray boom, \$500. JD 13' grain head, 213 rigid, good condition, \$3,000. JD 13' grain head, 213 rigid, some parts missing, \$1,500. '87 IH tri-axel, 22' stake dump, good condition. L10 Cummins 300, \$25,000. '76 GMC fuel truck, 1200 gallon, complete & working, \$3,500. (717)392-4878.

Dodge 1996 3500 dually 4x4, Cummins diesel auto, 4:10's, towing package, tilt, cruise, air, 34,000mi, MD insp., \$25,000. 410/239-7989.

Dodge 8' truck bed, like new, for '94 or newer, w/tail lights & tail gate, never hauled anything, \$1200 OBO. 717/432-4469.



**1992 Ford F-150**

Auto, P.S., P.B., Dark Blue Finish, Nice Cond

**\$5,800**

**(717) 664-2170**

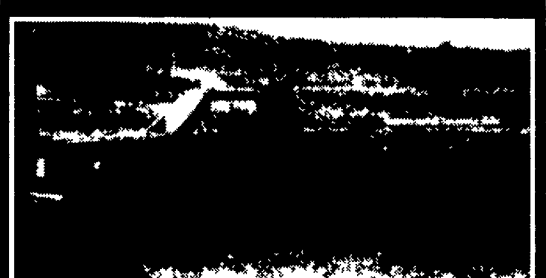
**Bob Higgins Truck Parts**

Rt. 313 - 837 Dublin Pk.  
Perkasie, PA 18944

**215-249-9166**

**Fax 215-249-9661**

- 3-71 GM Power Plant Radiator, Frame, 90° Torque Converter, Runs..... **\$1,600**
- '82 Int. Bus 1700 23' Long, 24 Passenger, Rebuilt 345 Eng. 4 Spd. Trans..... **\$2,995**
- 20' Rollback Body With Winch & Tow Bar..... **\$3,000**
- DV-550 Int V8 Diesel (It Ran)... **\$1,200**



**1987 Ford F-350 Diesel**

Rear hitch & Gooseneck hitch, manual trans, good shape

**\$7,500**

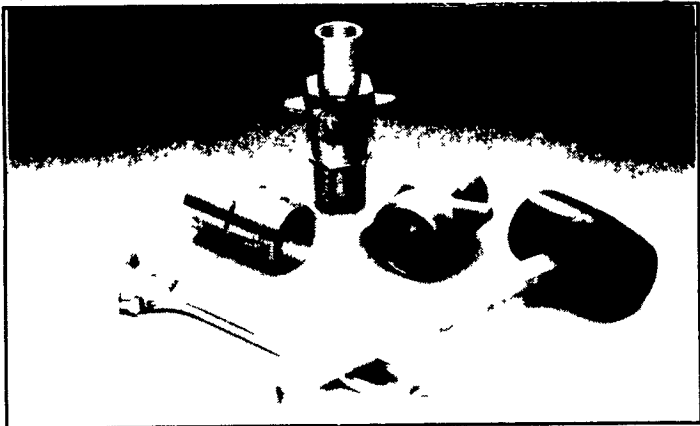
**Sparkling Springs Farm**

**814/793-3559**

**814/793-3874**

**ATTENTION TRUCKERS:  
NEWS FROM FASTER<sup>®</sup>  
USA INC.**

**NEW FORGED WING NUT COUPLING**  
**Stronger, More Durable**

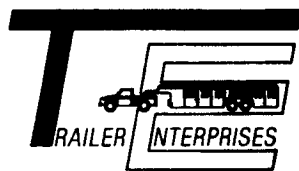


**NEW IMPROVED WING NUT DESIGN**

- Stronger and more durable providing longer service life.
- Interchanges with industry standard couplings.
- Resists breaking associated with castings
- Hammer, Wrench, or Hand tighten.
- Eliminates need for special nuts.

**Beiler Hydraulics**  
HYDRAULICS • PNEUMATICS • POWER TRANSMISSION  
440 Concrete Ave • Leola PA 17540 • 717-656-4878 • Fax 717-656-4682

"Revvin' to take care of ALL your trailer needs."



**HAS BUILT A REPUTATION . . . .**



**United Expressline 8x16 Cargo**      **Bison 616HPT**      **EBY Aluminum 7x20 Gooseneck**

**NEW & USED: STOCK - HORSE - CARGO - INDUSTRIAL - UTILITY - CAR HAULERS**

Trailer Enterprises is here to serve you. We are a full service facility providing YOU with the very best service available in the industry!

**TRAILER ENTERPRISES, INC.**  
13121 MAUGANSVILLE ROAD  
HAGERSTOWN, MD 21740

**Just give us a call at (301) 791-5343.**

**Hours: 8AM-5PM Monday-Friday  
9AM-12 Noon - Saturday**

**ENGLE-RISSINGER AUTO GROUP**

Midway Between Halifax And Millersburg • 717-896-3421 • 1-800-242-8075

HOOURS: Monday-Friday 8:30 AM - 8:30 PM; Saturday 8:30 AM - 3:00 PM

<p><b>Off Lease</b> <b>\$16,900</b></p> <p><b>1993 Isuzu NPR, 4 Cyl Diesel, 4 Cyl OD 14,250 GVW, 101,000 Miles, 14 Ft Van Body</b></p>	<p><b>Clean</b> <b>\$11,900</b></p> <p><b>1994 Ford E150 Van, 4 9 EFI, AT-OD, 6,700 GVW 104,430 Miles, A/C, White</b></p>	<p><b>\$15,900</b></p> <p><b>1994 FORD E350, 7 3 Diesel, AT, 14 Ft Van Body, 80,126 Miles Clean Unit</b></p>
<p><b>\$16,900</b></p> <p><b>1993 Ford CF800, 7 8 210 HP, 6 Speed, 33000 GVW 160 783 Miles 207" WB 24 Morgan Van Body w/Liftgate</b></p>	<p><b>Off Lease</b> <b>\$18,900</b></p> <p><b>1993 Mitsubishi 22 ft. Van w/Lift Gate 190HP Turbo Diesel, 6-Speed, 25,995 GVW, A/C, Exhaust Brake</b></p>	<p><b>\$35,000</b></p> <p><b>1996 Ford F450, 7 3 Power Stroke Diesel 5-Speed 15,000 GVW, 4,536 Miles, A/C, P.S, Yellow, Supreme 14 ft ThermoKing 0° Body</b></p>
<p><b>Dump</b> <b>Scissors</b></p> <p><b>1989 Ford LN8000, 18 Ft Steel Flat Dump &amp; Scissors to 14 Ft High Hyd Out Riggers, 7 8 210 HP 6- Spd Trans 33,000 GVW <b>\$22,500</b></b></p>	<p><b>Off Lease</b> <b>\$14,250</b></p> <p><b>1994 Isuzu NPR, 14,000 GVW, AT-OD, A/C, Cab &amp; Chassis, 138,000 miles</b></p>	<p><b>Drive Train Warranty</b> <b>\$34,000</b></p> <p><b>(3) 1994 Ford LTLA 9000 AEROMAX 12L Detroit Diesel, 430 HP, 9-Spd Trans 12,000 FA, 40,000 RA, on Air Ride, 60" Sleeper w/Head &amp; Air, 227" WB</b></p>
<p><b>\$23,500</b></p> <p><b>1989 Ford LNT8000, 7 8 210HP, 8LL Trans, 52,000 GVW, 22 ft Flatbed dump</b></p>	<p><b>KEYSTONE TRUCK SALES</b></p> <p>STERLING TRUCKS</p> <p>470 Penhar Rd, I-83 at 322 East, PO Box 4194, Harrisburg, PA 17111 Sales Dept. Hours. Monday-Friday 8 am to 5:30 pm</p> <p><b>(717) 564-6661 or (800) 669-6235</b></p>	