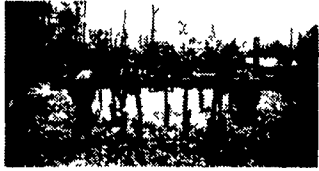


AG INDUSTRIAL INC.

50 North Greenmont Road, Rising Sun, MD 21911
410-658-5568 800-442-5043



N.H. 2115 Forage Harvester, 4WD, 960 Hours, N.H. 360 N4 4-Row Corn Head, N.H. 340W Windrow Pickup, Real Sharp



Case 5700 Chisel Plow, 75 Shenk, 32" Sharp

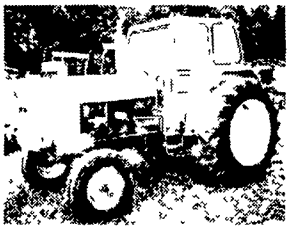
TRACTORS & LOADERS

- Ford 5000 Gas
 - Ford 650 Gas
 - Ford 1520 23 HP 4WD
 - Ford 841 Gas
 - Ford 4630 55 HP
 - Ford 5000 Tractor w/ Cab
 - Ford 6610, 72 HP
 - Ford 6640S, 76 HP
 - Ford 7710 2WD, 86 HP
 - Ford 3000 Tractor
 - Ford 655 TLB 4WD, Cab w/A/C
 - Ford 345 C w/Loader
 - Ford 550 TLB, 2WD, Cab
 - Ford 777 B Loader Attachment
 - NH L455 Skid Steer
 - NH LX 665 Skid Steer
 - NH L553 Skid Steer
 - (2) NH L555 Deluxe Skid Steer
 - (2) NH L785 Skid Steer
 - AC 5040 Tractor
 - AC 6080 Tractor
 - AC 6080 w/Loader
 - Bobcat 641 skid steer
 - Case 580B Tractor Loader
 - Case 1835-B skid steer
 - Case 385 TL, 2 WD
 - Cub 154 Lo-Boy
 - Int 656 Gas Tractor
 - JD F912, Frt Cut Mower w/60" Deck
 - Kubota L3750 TL, 2WD
 - Kubota G5200 w/48" Mower, 14 HP
 - Mitsubishi 650G Tractor w/ Front Blade
 - Yale Forklift, 5000 Lb Lift
- ### HAY & FORAGE
- NH 273 Baler w/54 thrower
 - NH 2115 Self Propelled harvester
 - NH 1495 Haybine, Gas, Hydro
 - NH 276 Baler w/58 thrower
 - NH 258 Rake
 - NH 320 Baler
 - (2) NH 415 Discbine w/Swivel Hitch

- NH 451 Sickle Bar Mower
- NH 463 Disc Mower
- NH 495 Haybine
- (2) NH 499 Pivot Tongue Haybine
- NH 575 Baler
- NH 1034 bale wagon
- NH 770 Harvester 2RN & WPU
- NH 849 Round Baler
- NH 855 Round Baler
- NH 890 Harvester
- NH 892 Harvester
- NH 939 N4 Corn Head
- NH 2 RN Snapper Head
- Case 8455 Round Baler
- Case 8420 Round Baler
- Deutz 360 Rake
- Hesston 1010 Hydroswing Haybine
- Hesston 1150 12' Haybine
- Kuhn GMD 66 HD Disc Mower
- MC Rotary Scythe

MISCELLANEOUS

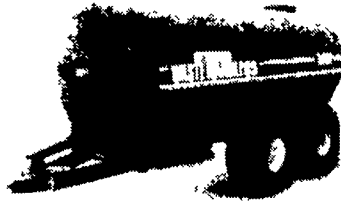
- NH 510 Spreader
- NI 213 Manure Spreader
- NI 245 Manure Spreader
- BH 257 7" Rotary Mower
- Case Int 475 12' Rock Flex Disc
- Cub 41/2' Pull Type Disc
- Brillion 12' Packer w/ (2) 5' Pups
- JD 3 Bottom Plow
- JD 4 Bottom Plow
- Pittsburgh 6' Rotary Mower
- Bolens ST120 lawn tractor
- Ber-Vac 24' Field Cultivator
- Cushman 5' front cut mower
- Vermeer TS60 truck mount tree spade



Ford 5000 Tractor w/cab 1970 Diesel Front Bumper



NH 575 Baler 4 yrs old Bale Case Ext & 1/4 Turn Chute - Real Clean



VanDale 3300 Slinger
 Rental Unit. 3 pt. Hookup
Also Lagoon Pump

MILLCREEK
FENCE AND FARM SYSTEMS
 2285 Old Phila. Pike
 Lanc., PA 17602
717-396-8987

FOR SALE



CASE IH 1594 TRACTOR
 85 HP, Dual Hydraulics, Power Shift,
 3400 Hrs., Heat, Air, Ready To Go
\$12,000

717-866-2246 - No Sunday Calls

6.9% APR Financing For Qualified Buyers

TRACTORS

Ford 6600 w/Cab & Air	\$12,900
Ford 7000 w/Cab	\$10,900
Case IH 685 w/Cab & Air	\$18,900
MF 2745 w/Duals, Low Hours	\$14,900
Ford 5000 w/ New Loader	\$9,800
Case IH 585 w/ New Loader	\$16,800
Ford 1910 w/Loader	\$13,500
Ford 1920 w/Loader	\$16,500
L785 Skid-Steer Loader	\$16,900
L-555 Skid-Steer Loader	\$9,500
L-445 Skid-Steer Loader	\$7,900
John Deere B - Ex Cond Collector	\$3,900
MF 35 Power Steer, w/Kelly Loader	\$4,900

FORAGE HARVESTERS

New Holland 1895...	\$28,500
New Holland 1895 (4x4)	\$34,500
New Holland S717	\$1,900
Field Queen 7655 Side Dump	\$25,000
New Holland 824 Corn Head 2RN	\$2,900
Gehl 960 Forage Wagon	\$4,900

HAY EQUIPMENT

New Holland 254 Tedder Rake	\$3,600
John Deere 640 Hay Rake	\$1,750
Oliver 107 Hay Rake	\$900

MISC. EQUIPMENT

Liliston 5' Mower	\$250
Landpride 6' Mower	\$800
Schuler Feed Cart - Choice of 4	\$3,500
Noble Front 3 Point Cultivator	\$2,900
3 Point Bale Slicer	\$2,500
Martin Spreader	\$1,900
John Deere 450 Manure Spreader	\$3,900
NH 520 Manure Spreader	\$4,900
New Holland 355 Grinder Mixer, Ex Cond	\$6,900
New Holland 352 Grinder Mixer	\$2,500
J D 350 Sickle Bar 7'	\$2,700
36 Foot Zimmerman Elevator	\$2,700

BALERS

New Holland 575	\$6,900
New Holland 315 w/Thrower	\$4,800
New Holland 326 (2)	\$5,900
JD 348 Baler	\$4,900
New Holland 855	\$8,900
New Holland 853	\$7,600
New Holland 853	\$6,900
New Holland 650 Net Wrap	\$16,800
New Holland 640 Net Wrap	\$14,900
New Holland 660	\$15,900
New Holland 630	\$7,900
Case IH 3650	\$7,900
New Holland 277 w/Thrower	\$3,900
New Holland 855 Net Wrap	\$9,500
New Holland 326 w/Thrower	\$8,500

MOWER CONDITIONERS

New Holland 1496	\$19,500
New Holland 1495	\$4,900
New Holland 1495 (nice) choice of 3	\$15,500
New Holland 495	\$3,700
New Holland 492	\$6,900
New Holland 479	\$1,400
New Holland 479	\$2,500
New Holland 116	\$4,700
New Holland 411	\$10,900
Hesston 1085	\$1,900
John Deere 1209	\$1,700
Hesston 1150	\$4,500
New Holland 499	\$7,500

SEE YOUR CERESVILLE FORD NEW HOLLAND SALESMAN TODAY!!!

We honor VISA & MASTERCARD

CERESVILLE FORD NEW HOLLAND, INC.

8102 Liberty Road • P.O. Box A
 Frederick, MD 21701

We ship parts UPS Fed.
 Express every day.

301-662-4197 • 1-800-331-9122



831 S. College St. (P.O. Box 409)

Myerstown, PA, 17067

RENTALS AVAILABLE

HOURS: Mon-Fri • 7:30-5:00
 Saturday • 7:30-Noon



WENGENERS

OF MYERSTOWN
 Construction Equipment & Parts

717-866-2130

Nights: (717) 272-9583
 or (717) 866-6030

CRAWLER DOZERS

Komatsu 031A-17, 1986 R.O.P.S., 6 Way	\$24,500
CAT D7F-1974ROPS ST/Tilt	\$35,000
CAT D6D-1977-ROPS	\$42,500
JD 650G, 1988 6 Way	\$43,500

CRAWLER LOADERS

JD 555 1980 w/9300 Hoe (will separate)	\$23,500
Fiat FL5, 1988, 800 hours	\$26,500

BACKHOES

1978 Ford 515 Tractor Loader w/Cab	\$12,500
1985 Ford 555B, Cab, Std	\$16,500
Case 580 SE, ROPS, ext. Hoe-1983	\$17,800
Case 580 SE, ROPS, ext. Hoe-1984	\$18,500
JD 410 B-CAB-1984-STD	\$18,500
JD 510B-1984-ROPS-Std	\$18,500
JCB1400B Standard-1989-Cab	\$19,500
JD 710C 1989-Cab-Std.-As Is	\$23,500
1988 J.C.B 1400B 4x4, Ext. Hoe, Cab	\$24,500
1987 Ford 555B, 4x4, Cab	\$25,500
1989 Ford 445C, 3pt., PTO, 4x4	\$28,500
1987 Ford 555B, ROPS	\$27,500
JD 710B 1987-4x4-Cab-Std., 4N1	ON RENT
Ford 575D, 1993 4x4, E-Hoe-Cab-Air	\$34,500
Case 680L 4x4-1990-Cab-Std.	ON RENT
JD 710C-1989-Cab-Std.	\$35,500
JD 710 C, 1990, Cab, Air, Standard	\$36,500

CHIPPERS

Chipmore, 6", gas	\$3,000
Asplundh 16" Gas	\$5,000

EXCAVATORS

Cat E70B, 1984, 3500 Hours	\$28,500
Cat E110B, 4,700 Hrs, 1989	\$36,500
Cat 110B Cab/Air, 2,250 Hrs., 1989	\$39,500
Hitachi EX120, 1990, 3600 Hrs	\$44,500
Cat 307, 1994, 2600 Hrs.	\$47,500
Komatsu PC-150-5 5,600 Hrs., 1991, Thumb	\$57,500
Cat 320, 1992, 3500 Hours, Air	\$74,500
Cat E200B, 1988, 4150 Hrs	ON RENT

SKID LOADERS

JD 675B, 1988	\$10,500
NH LX665-1994	\$15,500

RUBBER TIRE LOADERS

Dresser 510, Cab, 1979	\$22,500
J.C.B. 408 Cab	\$29,500
Fiat FR10, 1983, cab	\$24,500
Cat IT18, 1985, cab	\$44,500
Cat IT18F, 1993, Cab	\$53,500
Cat IT 14B, 1993, cab, low Hrs	\$56,500
JD 544G 4 in 1 Bucket, Cab, 1994	\$69,500

ROLLERS

1 Ton Asphalt Roller Elec. Start	\$1,900
Gallon 3-5 Ton, tow package	\$3,000
Gallon 9PC, 1970, Rubber Tired	\$4,500
Ingersol Rand DD24, 1991	\$19,500
Tampo RP28D, 84" Padsfoot, DD	\$21,500
I.R. SD40D 54" Drum Drive	\$29,500
Dynapac CA25D 84" Drum Drive	\$29,500
1986 Bowmag BW 142D, 56" Druum Drive	\$29,500

MOTOR GRADERS

Huber D1500, Cab, Scarifier, 1972	\$8,500
-----------------------------------	---------

TRAILERS

1997 5 Ton Tag-a-Long, 6.5x14	\$1,595
1997 5 Ton Tag-a-Long, 6.5x16	\$2,095
1997 5 Ton Tag-a-Long, 6.5x18	\$2,195
1996 6 1/2 Ton Tag-a-Long, 8x19	\$3,500
1997 10 Ton Tag-a-Long w/electric	\$6,900
1983 Eager Beaver 12 Ton	\$7,900
1997 10 Ton Tag-a-Long w/air brakes	\$7,900
1997 20 Ton Trailer, Air, F.E.T. Paid	\$12,800

FORKLIFTS

White Tow Motor, LP Gas	\$2,000
Marklift M25 Scissor Lift, 1985	\$6,750
Case 586E, 1989, 4x4, 14, ROPS	\$25,500
1995 J.C.B 505-19 w/Forks & Bucket	\$38,500

MISCELLANEOUS

Cinder-Salt-Sand Spreader	\$1,000
Schramm 160 Air Compressor	\$2,000
(3) Root Rakes	\$2,000-\$2,750
Advance Retriever 6600G Sweeper	\$3,500
Ripper For Case 850D, Excellent	\$4,500
Tennant 925E Sweeper, 1983, LPG	\$5,900
Vermeer 265 Stump Grinder, diesel	\$8,500
Puckett Bros. T650 1984	\$8,500
Puckett Bros. T650B, 1988, paver	\$14,500
Ford F800 Dump Truck, Diesel, 1988	\$14,500
Puckett Bros. T650B 1990	\$15,500