

SAT MAR 21 - 10:30AM From Gettysburg, PA, Rt 34N 5-1/2 mi to L to Ziegler Mill Rd, 1/2 mi to sale Farm Machinery Auction By Robert L. Meyers & Jim & Annette Delaplaine Dennis J Plunkert & Robert G Flickinger, Auctions

SAT MAR 21 - 10:30AM 10 Wolvorton Rd, 3 mi SE of Pittstown, NJ Wolvorton Rd off Locust off Rt 615 S - 8 mi S of Exit 15 off Rt 78 Well kept grain farm machinery, 5 tractors, combine, hay, tillage equip By Orville Barneck Col F R Daniels Auct's Inc

SAT MAR 21 - 10:30AM Allamuchy, NJ, just 2 mi N of I-80 on Rt 517 at exit 19 Tranquility Farms Complete Dispersal, 270 reg Holsteins By Peter Freeborn The Cattle Exchange

SAT MAR 21 - 11AM Deerfield, Cumberland Co., Southern NJ Up to date spinach, sbd & irrigation equip, & later model trucks & trailers By Johnson Farms Pirrung Aucts, Inc

SAT MAR 21 - 11AM Rt 283 to 772 at Mt Joy-Manheim ext, 3 mi E on 772 to auction on R, Village of Sporting Hill, Rapho Twp., Lanc Co., PA Real estate, Hh goods, tools & walk behind tractor By Mr & Mrs Levi A Herrold Roger A Lauver & Dean E Longacre, Aucts

MON MAR 23 - 9AM 169 N Groffdale Rd., Leola, Lanc, Co., PA Consignment Auction for Tractors, Combines, Trucks & Farm Equip By M M Weaver & Sons Aaron E Martin Auction Service

MON MAR 23 - 9AM Rt 24 S of Red Lion to south end of Winterstown, E onto Church Rd & go to Cross Rd., From square in Cross Roads to toward Brogueville on Main St./Century Farm Rd 3 mi to auct on R Tractors & farm equip By Ruth C Miller Rentzel's Auction Service

MON MAR 23 - 10AM Murry Auction Emporium, 23 N Water St, Litz, Lanc Co., PA Antique Auction, china, glassware, pottery, jewelry, coll, sewing & textiles, toys & books, country store coll, Holly Hobby coll, furn, etc By Catherine Forry & Dr Paul Hoover, Estates, etal E M Murry Assoc., Aucts

Affiliated Auctioneers

PO Box 2895, Warminster, PA 18974
215-743-6000 FAX 215-743-6003

Paul W. Capra, Auctioneer - RY000018-L
www.auction.com

ADVANCE NOTICE AUCTION; SAT., MARCH 21, 1998

AT 10 A.M.

Public Auction Sale of Construction Equipment on our new premises
2201 E. Castor Ave., Philadelphia, PA

EQUIPMENT IS STILL COMING THROUGH THE GATES APPRX. 200 PCS. WILL BE SOLD

FEATURING: Excavators, Dozers, Truck Tractors, Dump Trucks, Loaders, Extendahoes, Skid Steers, Pickup Trucks & Vans, Backhoes, Asphalt/Dirt Rollers, Forklifts, 20' Man Lift, Cement Mixer, Roofer Kettle, Misc.-Gas Welders, Fork Lifts, Tools and more. Call for further details.

TERMS: Cash or Certified Funds Only. Bank Letter of guarantee for personal check approval. Payment in full sale day before removal. No buyer's premium.

Directions: PA Tpke to 76S to 676S to 195N exit Allegheny Ave. - right at bottom of ramp to Allegheny Ave. turn left to Delaware Ave. turn left to Castor Ave. turn left 1 mile to right.

A LARGE EQUIPMENT CONSIGNMENT AUCTION

Witman Auctioneers, Inc.
A.C. Diffenbach Auction, Inc.
Saturday, April 4, 1998

8:00 A.M.

Important - Consign Now - We Will Be Selling
Held at: 100 West Jackson Street, New Holland, PA.
Lancaster County

- CONSTRUCTION - Crawler Loaders - Dozers - Forklifts - Loader Backhoes - Air Compressors - Skid Steer Loaders - Rubber Tired Loaders - Hyster - Baker - Yale Forklifts, Michigan Rubber Tired Loader 2 1/2 Yd. Bucket, Detroit Diesel, LeRoi Air Compressor, Onan Industrial Generator 18.75 KVA, Zenith Automatic Control Panel, Lincoln Lincweld #225 Amp Engine Drive Welder-Generator, Kubota Front Runner 4x4 Tractor, Detroit Power Unit, Case 1835B Skid Loader, Cat 977 K Trac Loader, John Deere 410 Loader Backhoe, Full Cab, Case 580K 4WD Standard Hoe SN #JJ60023523, Case 580SE EROPS Cab Ex-Hoe, SN #17029975, Case 580C TLB Standard Hoe OROPS Canopy
- ROAD TRUCK TRACTORS - DELIVERY - CAB AND CHASSIS - DUMP TRUCKS 1992 Ford CF7000 Diesel, 22' Van Body, 6 Spd., 32,900 GVW, Air Brakes, 1978 GMC Astro Tractor, T/A, 8 Spd., 6V-92 Detroit, 1978 Chevrolet Tractor S/A, 5 Spd. & 2 Spd. Rear, 1984 Ford F-350 Truck w/Utility Bed 4 Spd., 1988 Ford F-150 Pickup Truck, Pickup Trucks, 4x4's, Cargo Vans
- TRAILERS - Dumps - Flatbeds - Vans - Storage - Reefers - Lowboys - Equipment Tag-Alongs, 40' Stainless Reefer w/Electric Standby, Lowboy Trailer w/Ramps, Auto Carrier Trailer, 1985 Markline Construction Office 8x24, 40'-45' Flatbeds, 40'-45' Storage Van Trailers, 22' Pup Trailers, 45' Dropdeck Van Trailer, 1972 Gindy 45' Van Trailer.
- SHOP AND GARAGE EQUIPMENT - TOOLS - Cutting Torch Set, Air Hoses, Air Grease Pumps, Electric Motors, Pipe Vise Stand, Engines, Rears, Transmissions, Cut-Off Suspensions, Electric Motors, Hand Tools, New Containers of Oil, Grease, Lube, Diesel Treatments, Tire Changer, Shop Air Compressors, Mechanic's Hand Tools, Shop Welders, Fuel Tanks, Chains, Binders, Load Bars, Landing Gears, Axles, 5th Wheels, Tarps, Cummins and Detroit Engines, Cabs, Mack Parts, Engine Cranes, DeWalt Radial Arm Saw, New Trailer Dolly Handles, Starters 12 volt, Flatbed Trailer Side Kit, Axle Shafts, Jack Hammer Bits; Brunner & Lay 1 1/4" Moil, Tow Bars, Cables, Various Grade 8-5 Bolts, Large Clevis's, Turnbuckles, Ground Anchors.
- TRAILER LOAD OF OFFICE EQUIPMENT - Copiers, Paper, Executive Wooden Credenza, Metal Office Desks, w/Sectional Arm, Modern Upholstered Arm Office Chairs, Metal File Cabinets, (Legal Size), Fire Proof Safe Files.
- TIRES - Truck Tire Rims (11x22.5-10-00x20) Recapped and Used Truck Tires, Lug & Regular Tread, Low-Pro Tires, Lowboy Tires, Aluminum and Steel Budd Wheels, 15" Forklift Tires, 1400R20, 1600R20, 1200R20, 1000X15, 1800X19 5 Tires.

3 Auctioneers Selling Simultaneously
To Consign To This Large Auction Call (717) 665-5735
Consignments Continue On A Daily Basis. This Is A Very Partial Listing. For Complete Brochure #4 Call Auction Company.
Terms: Cash, Certified Or Cashiers Check, All Checks Must Be Accompanied With Bank Letter.

Auction Conducted By:

Jay M. Witman AU001127-L
Luke R. Witman • Alan Diffenbach
657 Fruitville Pike Manheim, PA 17545
(717) 665-5735 • Fax (717) 664-2737

21st ANNUAL TOY SHOW

HUMMELSTOWN FIRE COMPANY

249 E. MAIN STREET

HUMMELSTOWN, PA 17036

SAT., MARCH 21, 1998

9:00 AM TILL 3:00 PM

Antiques, Toys, Trains, Dolls, Farm Toys, Ertl, Matchbox, Hot Wheels, Smith-Miller, Winross & More

OVER 100 TABLES ON THREE FLOORS

FLOOR RIGHTS: \$10.00 - 6:30 AM to 9:00 AM

GENERAL ADMISSION: \$2.00 - 9:00 AM TO 3:00 PM

CHILDREN 12 & UNDER - FREE WITH ADULT

FOR MORE INFORMATION - CALL

STAN WANNER 717-566-0056

STEVE KIENZLE 717-566-8525

Located 3 miles west of Hershey off Rt 322 at Hummelstown Exit

CHAMPLIN FARMS COMPLETE DISPERSAL AUCTION

CLEAN CASH CROP

JOHN DEERE EQUIPMENT

Taft Rd., West Bloomfield

Thursday, March 19, 1998

At 10:00 A.M.

NOTICE: The Champlin family has decided to pursue other interests & will sell this well maintained spread of tools & bins. Everything has been stored inside.

LOCATION: From Rts. 5&20 1/2 mile east of West Bloomfield, 6 miles east of Lima or 10 miles west of Canandaigua take Conn Rd. south to Taft Rd.

SELLING: JD 6620 combine w/643, 653 & 215 heads - a good field ready outfit! JD 4640 tractor w/cab; JD 4430 quad w/cab & 20.8x38 tires; Farmall M; JD B; 1985 GMC grain truck w/16' body & hoist; JD 8300 DD 24x7 drill w/grass seeder; JD 7000 6R dry planter; 1993 JD 348 baler w/thrower - excellent; JD tedder; (6) good basket wagons; (2) NH rakes; NI 36' elevator; JD 350 5B plow; JD 4B plow; JD 15' offset disc; JD 30' field cultivator; IH 6R cultivator; Brillion 16' cultipacker; 24' bale elevator; JD 15' rotary mower, excellent; Vicon seeder; 1500 gal. poly tank 18x38 duals; 20.8x38 duals w/32" bands; (2)gravity wagons; Saddle tank sprayer; 3 pt. JD mower; forage wagon; loader for H; Kosh mower; trailer axles; JD quick hitch; JD suit case weights; straw choppers for 6620; clover sieve for 6620; JD 2700 6B x 16 plow; 14' cultipacker; iron scrap pile; I beam; PTO grass seeder; chain fall; 12' seeder; p.u. fuel tank w/elec. pump truck tires, Crippen seed cleaner; 600 # dump scales; 12' drag.

GRAIN AUGERS: DRYERS & BINS: Kan Sun 305 bu. continuous dryer (1) 29,000 bu. grain bin; (1) 10,000 bu. grain bin; (1) 8,000 bu. grain bin; (2) 4500 bu. bin; (1) 1200 bu. wet bin; Hy Cap grain rotary cleaner; several sweep augers; 6 and 8" unloading augers; several 4 and 6" distribution augers; Fetral 60' 10" transport auger, like new; Mayrath 28' 6" auger.

ALSO: A good quantity of New parts & supplies, various tools & related items and much more.

CONSIGNED FROM BOB & MAXINE LAY: IH 806 diesel, 2800 hrs., ROPS, excellent; 18.4x34 axle duals excellent; Farmhand wheel rake; IH flail chopper; Oliver 12' transport disc; JD 16' drag, like new; 8' disc; 3B disc plow; 9 shank pull type chisel plow; 3B IH trailer plow; IH front mount cultivator (fits Super C); IH 2R bean puller (fits IH "M"); Steam Jenny; 16' weeder, steel wheeled field cultivator; 1R potato digger, horse drawn road grader; antique crop sprayer; 5' rotary mower.

CONSIGNED FROM JOHN RANDALL: JD 140 garden tractor w/mower & tiller; JD 524 garden rototiller; 5' mott mower; 6R front mount bean puller; old gravity wagon on old gear, 21' forklift mast (free lift) w/rotating bale grabber.

TERMS: Full settlement auction day, cash or good check.

Owner:

JOHN CHAMPLIN

(716) 624-3707

Roy Teitworth, Inc.

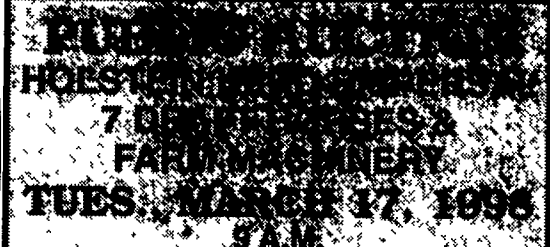
PROFESSIONAL AUCTIONEERS

(716) 243-1563

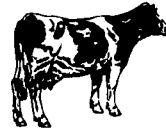
FAX (716) 243-3311

6502 Barber Hill Road

Geneseo, New York 14454



Loc.: 172 Water St., Narvon, Pa Take Rt 23 East of Blue Ball approx. 5 Miles to Churchtown Turn left (North) onto Water St., go to first farm on right



34 Holstein Cows,
12 Were Fresh Since Jan. 1,
6 Bred Heifers,
3 Short Bred Heifers;
Stock Bull

7 Sorrel Work Horses, 8 Yrs. to Smooth Mouth
8 Sets Harness, Collars, & Bridles, 2 Sets Check Lines, Jockey Sticks, 3 Sets Rope & Pulley Eveners, 2, 3, 4, 6 Horse Hitches, Buckboard Spring Wagon, 3 Fore Carts, Cattle Foot Bath
Deutz 5505 Diesel Tractor On Steel, WF: Bob Cat 610 Skid Loader, Detroit 671 Diesel Engine w/540 or 1000 RPM; Hyd Power Unit, Wis. 30 Hrp Engine, V g Engine w/Clutch Reduction, Hyd Motors, AC-B-125 Engine, New Radiator, One Cylinder Lister Engine Not Running; Round Bale Fork, ELS Tank Spreader, New Idea #17 Manure Spreader, Manure Pump On Wheels, White Horse 2 Bottom 12" Plow, Weir 106 Walking Plow, 28 Section Disc, 3 Section Spring Harrow, 2 Cultipackers, 2 Jake Zook Flatbed Wagons, New Idea 2 Row Corn Picker w/8 Roll Husking Bed, 2 Bin Wagons, JD619 2 Row Corn Planter, Int 4 Row Corn Planter, M-C Rota Beater, Field Sprayer w/Engine, NH 477 Haybine, NH 455 Trailer Mower, NH 55 & 56 Hay Rakes, 32 Ft Elevator, NH 273 Baler, Fox 425 Harvester w/Bundle Table, 2 NH N2 Row Corn Heads, 1 For Parts, One Horse Corn Binder, NI Transplanter, 2 Shovel Harrows, 2 Cultivators, 1 For Parts, PTO Bucksaw; Posthole Digger, 300 Gal Gas Tank, 200 Gal Fiberglass Tank, 2 Feed Carts, Torch, Hoses & Gauges, Lincoln 225 Engine Welder, Nonflame Stove, Tobacco Cellar Stove, 2 Minnich Bale Boxes, Telephone Shanty
3 DeLaval Milker Units, Milk Pail, 2 Milk Strainers, Dumping Station w/Milker Washer Many more items too numerous to mention No Out Of State Checks Lunch Available Sale Order Starting w/2 wagon loads small items, machinery, cattle and horses last

TERMS BY

DAVID L. SMUCKER

717-445-6842

Auction Conducted By Lloyd Kreider
Randal V Kline, Roy Good, Jr 717-786-3394
Lic #513L, #499L, #2116L



PUBLIC AUCTION

REAL ESTATE - FARM MACHINERY

Sat., March 28, 1998

at 9:30 a.m.

Located in Huntingdon County, 2 Miles south of Allensville, PA., or 6 miles north of Mill Creek, PA., Turn East off Route 655 onto Metztown Road, to 1st farm.

REAL ESTATE AT 12:00 NOON

Big Valley 100+ level acre farm (formerly known as the Fred Huey farm) w/stream of water, majority tillable under cultivation, air landing strip, hanger/machinery building, bounded on 2 sides by public roads, frame bank barn, 2 story frame house w/4 B.R. on 2nd floor, 3 large rooms and bath on 1st floor. For inspection appointment, contact owner at 814-667-2439! Farm is in clean and green program.

Terms - \$20,000.00 down, balance upon final settlement within 30 days. RESERVE THE RIGHT TO REJECT ANY BIDS.

MODERN FARM MACHINERY

J.D. no. 90 skid loader, Case no. 660 s.p. combine w/10 ft. platform and 2 row corn head, I.H. hydro 70 dsl. tractor, 3720 hrs. and good rubber, set of front wts., I.H. no. 464 gas tractor, 4260 hrs. w/new rubber, White no. 2-35 dsl. tractor 2440 hrs., I.H. cub cadet 128 w/mower deck, Generac 30 k.w. alternator like new, I.H. no. 518-18 disk grain drill, N.I. no. 323 corn picker, N.H. no. 311 baler w/ thrower, N.H. no. 489 haybine, Pequea PTO tedder, I.H. no. 1300 mower, N.I. Rola bar rake, kicker tedder, Kewanee 36 ft. elevator like new, Harvey 26 ft. fold up side elevator, 2 bale rack wagons, 2 wagons w/side boards, Killbros gravity bin wagon, hyd. dump cart, Paper harvester w/pickup and corn heads, I.H. no. 56 blower, Papec and Gehl forage unloading wagons, N.I. no. 360 single beater spreader, Ford 3-14 in. and 2-14 in. plows, I.H. 10ft. disk, Brillion 10 ft. double cultipacker, 12 ft. harrow, lime drill, Ford 2 row corn planter, Bush Hog 5ft rotary mower, 3 pt. blade, 2 fuel tanks, feed cart, Raytec calf cart, Meyers well pump jack, Forney welder, air compressor, battery charger, 2 chain saws, anvil, bolt bin w/bolts, wrenches, hand tools, the usual farm supplies and clean up items.

Terms: CASH OR APPROVED CHECK

Owner: GERTRUDE (Trudy) METZ

Phone: 814-667-2439

Auctioneer: Mark Glick

AU-349-L

Lawrence Newton, Esquire