

**Carlisle Livestock**

Carlisle, Pa.  
March 10, 1998

SLAUGHTER CATTLE: HEIFERS, 1 AT 60.00.  
COWS: ACTIVE! BREAKING UTILITY AND COMMERCIAL 39.00-45.25; CUTTER AND BONING UTILITY 35.00-40.50; CANNER AND LOW CUTTER 30.00-34.75; BIG MIDDLE 34.75-38.50; SHELLY 28.00 AND DOWN.  
BULLS: YG#1 1010-1230 LBS. 38.75-42.75.  
FEEDER CATTLE: STEERS, HOLSTEINS/DAIRY TYPES/HEREFORDS 200-800 LBS. 53.00-74.00. HEIFERS: 500-600 LBS. 54.00-67.00; HOLSTEINS/DAIRY TYPES/HEREFORDS 200-400 LBS. 52.00-68.00.  
CALVES: RETURNING TO FARM: HOLSTEIN BULLS #1 MED. AND LRGE. 95-135 LBS. 67.50-96.00; HOLSTEIN HEIFERS #1 80-120 LBS. 80.00-137.50; BEEF X BULLS 75.00-99.00.  
SWINE: HOGS US#1-3 220-270 LBS.

32.25-33.25, 280-340 LBS. 28.25-33.00; US#2-3 190-210 LBS. 25.00-31.50.  
BOARS: OVER 350 LBS. 13.00-16.00.  
SOWS: US#1-3 300-800 LBS. 24.00-34.00; THIN/WEAK/ROUGH TO 23.50.  
FEEDER PIGS BY THE HEAD, 15-25 LBS. 13.00-26.00, 30-35 LBS. 24.00-26.00.  
GOATS: BY THE HEAD, MED. TO LARGE NANNIES AND BILLIES 67.50-142.50; FANCY KIDS 50.00-66.00; FLESHY KIDS 40.00-49.00; SMALL/THIN KIDS 15.00-36.00.  
LAMBS: CHOICE 40-60 LBS. 140.00-157.50, GOOD AND CHOICE 70-110 LBS. 93.00-135.00.  
SHEEP: ALL WEIGHTS 25.00-65.00. SALE EVERY TUES. 5 P.M. FOR RABBITS, POULTRY AND EGGS, 6:30 P.M. FOR LIVESTOCK, STARTING WITH CALVES.  
SPECIAL FED CATTLE SALE TUES., MARCH 17.  
SPECIAL FEEDER CATTLE SALE TUES., MARCH 17 AND 31.  
STATE GRADED FEEDER PIG SALES FRIDAY, MARCH 27.  
PEN LOTS OF CATTLE SOLD IN ORDER RECEIVED; EARLYBIRD PENS CLOSE TUES. 2 P.M.

SPECIAL EASTER SALE FRIDAY, APRIL 3. RABBITS, POULTRY AND EGGS WILL BE RECEIVED FROM 7-9 A.M. SALE STARTS AT 9 A.M. GOATS, LAMBS AND SHEEP WILL BE RECEIVED 7 A.M.-11 A.M. SALE STARTS AT 12:30 P.M.

**Grantsville Livestock**

Grantsville, Maryland  
Report Supplied by Auction  
Sat., March 7, 1998

STOCK BULLS AND STEERS 200-500 LBS. 60.00-88.00.  
STOCK HEIFERS 50.00-78.00.  
SLAUGHTER STEERS GOOD TO CHOICE, NONE AVAILABLE; MEDIUM TO GOOD 45.00-60.00.  
HOLSTEIN STEERS GOOD, NONE AVAILABLE; LIGHT 35.00-49.75.  
SLAUGHTER HEIFERS GOOD TO CHOICE, NONE AVAILABLE; MEDIUM TO GOOD 42.00-57.50.  
BULLS: HEAVY 42.00-50.00, LIGHT 40.00-48.25.  
COWS: UTILITY HOLSTEINS 34.00-38.75, CANNERS 28.00-33.00, CULLS 27.00 AND DOWN.  
VEALS GOOD TO CHOICE UP TO

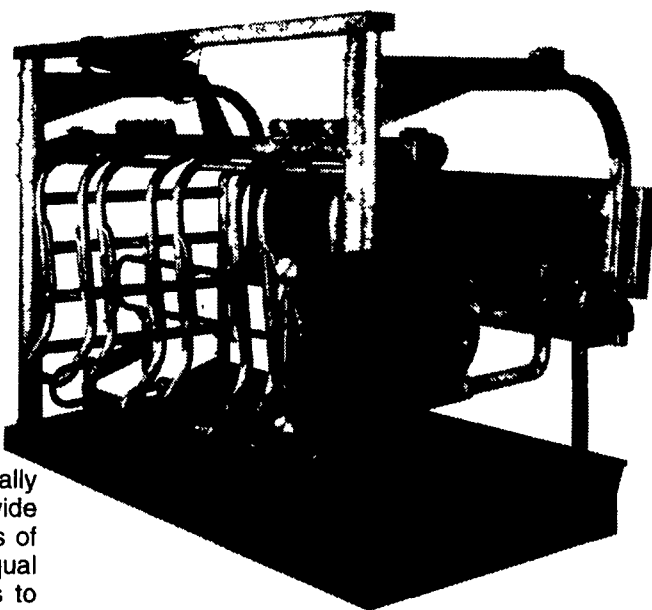
84.00, MEDIUM TO GOOD 35.00-55.00.  
BOB CALVES: 30.00 AND DOWN.  
HOLSTEIN BULL CALVES RETURN TO FARM: 90-120 LBS. UP TO 85.00.  
HOLSTEIN HEIFER CALVES RETURN TO FARM UP TO 87.00.  
BEEF X CALVES RETURN TO FARM: UP TO 100.00.  
HOGS: TOP QUALITY 31.00-38.00, HEAVY 31.00-35.00, LIGHT 30.00-37.00, FEEDER PIGS BY THE HEAD, UP TO 35.00.  
SOWS: UP TO 41.00.  
MALE HOGS: UP TO 25.00.  
LAMBS: 70-85 LBS. UP TO 105.00; 85-125 LBS. UP TO 85.00; 30-60 LBS., UP TO 136.00; CULLS 75.00 AND DOWN.  
SHEEP: UP TO 47.50.  
GOATS: ALL BY THE HEAD, LARGE 50.00-110.00; MEDIUM 20.00-70.00; SMALL 11.00-30.00.  
ANNUAL EASTER LAMB AND GOAT SALES SAT., APRIL 4 AND SAT., APRIL 11.

**Friend's Stockyard Inc.**

Accident, Md. 21520  
Report Supplied by Auction  
March 9, 1998

STOCK BULLS AND STEERS (200-500 LBS.) 52.00-90.00.  
STOCK HEIFERS: 36.00-75.00.  
SLAUGHTER STEERS: GOOD TO CHOICE 58.50-62.10; MEDIUM TO GOOD 56.00-59.50, HEAVY CHOICE OVER 1450 LB. 55.00-61.50.  
HOLSTEIN STEERS: HEAVY CHOICE 37.00-55.40, LIGHT 38.00-45.00.  
SLAUGHTER HEIFERS: GOOD TO CHOICE 58.25-62.70; MEDIUM TO GOOD 47.00-58.00.  
BULLS: HEAVY 44.00-53.50, LIGHT 38.00-45.00.  
COWS: UTILITY (HOLSTEIN) 35.00-42.00, COMMERCIAL TO GOOD 31.00-34.50, CULL COWS 30.00 AND DOWN.  
VEALS: GOOD TO CHOICE 50.00-65.00, MEDIUM TO GOOD 20.00-46.00.  
BOB CALVES: 27.00 AND DOWN.  
HOLSTEIN BULL CALVES — RETURN TO FARM (90 TO 120 LB.)-UP TO 91.00.  
HOLSTEIN HEIFER CALVES — RETURN TO FARM (90 TO 120 LB.)- UP TO 105.00.  
BEEF CROSS CALVES — RETURN TO FARM UP TO 64.00.  
HOGS: TOP QUALITY UP TO 35.00, HEAVY UP TO 34.00, LIGHT 28.00-31.00.  
SOWS: 29.00-31.00.  
MALE HOGS: 21.00-28.00.  
LAMBS, LIGHT AND FEEDER, NONE AVAILABLE.  
SHEEP: 15.00-38.00.  
LIVESTOCK PRICES ARE ALL GIVEN PER HUNDRED WEIGHT!  
**MIDDLEBURG LIVESTOCK AUCTION**  
PA DEPT. OF AGRICULTURE  
MIDDLEBURG, PA  
March 10, 1998  
CATTLE 379... PDA ..Compared to last week's sale...sl. steers steady to spots 2.00 higher, sl. cows mostly steady, sl. heifers steady to 1.00 higher, bulls steady to 1.00 lower.  
SLAUGHTER STEERS: High Choice and Prime 1160/1450 lbs. 63.50-65.75, Choice 1215/1445 lbs. 60.00-63.50, Select 53.00-60.25, Standard 45.00-52.75.  
HOLSTEINS: High Choice and Prime 1440/1600 lbs. 57.50-59.75, Choice 1390/1640 lbs. 53.25-56.50, Select 51.00-53.50, Standard 41.25-49.75.  
HEIFERS: few High Choice and Prime 1200/1390 lbs. 63.25-63.75, Choice 1050/1325 lbs. 60.00-62.75, Select 53.50-60.50, Standard 42.25-52.25.  
COWS: Breaking Utility and Commercial 36.75-41.50, Cutter and Boning Utility 32.50-39.00, Canner and Low Cutter  
(Turn to Page A17)

**SURGE Magnum 90i**  
Herringbone Stall



The MAGNUM SERIES of parlor stalls are internationally designed, engineered and manufactured to provide maximum longevity with minimal maintenance, regardless of herd size. We at Babson Bros. Co. know, that of equal importance to equipment durability, are four other points to focus on: **Cow Comfort; Cow Positioning; Operator Safety and Throughput Capabilities...**



**MOUNTAIN VIEW SUPPLY, INC.**  
Rd. 1, Box 1392  
Hamburg, PA  
610-488-1025

**BRANDT'S FARM SUPPLY**  
Elizabethtown, PA  
1-800-872-7478  
717-367-1221

**LONGACRE ELECTRICAL SERVICE, INC.**  
Bally, PA  
215-845-2261

**HOSTETTER SURGE**  
Rd 2, Box 749  
Annville, PA  
717-867-2896

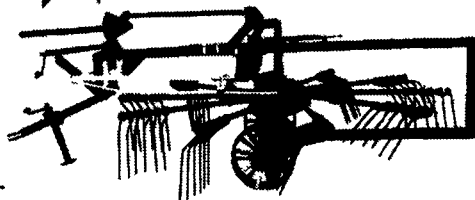
**FORSHEY'S, INC.**  
110 Forshey St.  
Martinsburg, PA  
814-793-3791

**JIM'S SURGE SALES & SERVICE**  
215 Oak Bottom Rd.  
Quarryville, PA  
717-786-1533

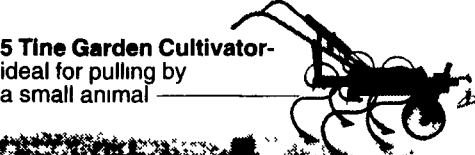
No other milking equipment and supply company has more experience, expertise and commitment in its ability to deliver service, knowledge and merchandise. All of this contributes to the well-being of cows and the profitability of your dairy.

**4% off in Mar.**


**Implements From I&J Manufacturing**



Rotary Rakes- available in 3 pt or Trailing, PTO or ground drive



5 Tine Garden Cultivator- ideal for pulling by a small animal



3 pt. Cultivators for 1-6 rows

**I&J**  
5302 Amish Road • Gap, PA 17527  
717/442-9451