

"Dairy of Distinction," 4 BR, 2 bath home in excellent condition, 160+/- acres, barn with attached heifer shed. \$325,000. #1446.
 Nice 18+/- Acre Farmette with colonial style, 3 BR, 1 bath home, several outbuildings, stream. \$115,000. #1493.
 Operating Veal Farm currently under contract (nice income already in place), 370 stalls, 32x250 barn. \$129,900. #1535.



MLS
 120 East Avenue
 Wellsboro, PA 16901
 717-724-3500

REAL ESTATE AND INSURANCE

Year round cabin, 3 BR, wood floors, oil heat \$39,000.

10 acres w/stocked pond. Farmhouse sleeps 14! \$87,900.

2 BR cottage at Lake Mokoma on 1+ acre \$75,000.

Log home with a view! 2 acres, all the amenities too \$79,900

4 BR home on 10 acres, barn & pond \$110,000

4 BR cabin on 3 acres near SGL #12 \$42,900

Call

Sullivan County Real Estate, Inc.
 Eagles Mere, PA 17731
 717/525-3225

INTERNET <http://www.eaglesmere.com>

BERKS CO.



185 acres, 140 acres tillable. Nice 4-bedroom house with inground pool. Three harvester silos, slurry store. Dairy barn with 61 tie stalls.

PENNS VALLEY



Centre Co., Spring Mills area 144 acre dairy, 85 acres tillable, 40 tie stall bank barn, one silo. Large four bedroom house

NITTANY VALLEY



Clinton Co., Lamar area, 164 acres, 124 tillable, two houses, 36 tie stall bank barn, two silos & outbuildings, 1/2 mile road frontage

LANCASTER COUNTY



Drumore area, 82 acre dairy farm, 60 acres tillable, 9 acres pasture, rest woodland, Two silos, 50 stanchion cow barn & other outbuildings, Large 4 bedroom house, Amish equipped

NEW LISTING!

PENNS VALLEY, CENTRE COUNTY

120 acres, 105 acres tillable, Top rated land Excellent house and buildings Ready for quick sale - Priced to sell! Possession by April 30, 1998 Call Hiram or Thomas for details!

NEW LISTING!

PENNS VALLEY, CENTRE COUNTY

101 acres 80 acres tillable, Nearly level land Very good house and buildings Owner wants quick sale - Priced to sell! Possession by April 30, 1998 Call Hiram or Thomas for details!

CLINTON COUNTY

North Bend Area, 291 acres of woodland Bear, Turkey & Deer have been seen on property Excellent hunting or recreation property No buildings \$515 per acre

INDIANA COUNTY

40 acres, 32 acres tillable Good road frontage, no buildings

Call

Hiram Hershey, Broker

Thomas Hershey, Realtor Associate

HERSHEY FARM AGENCY, INC.

1-800-880-3831.

FOR SALE

178 acre dairy farm with approx. 95 A. tillable, located in SW Wisconsin. Improvements - 43 tie stall dairy barn w/pipeline, bulk tank & cleaner, 3 stave silos, 20x32 Harvestore corn unit, feed bunk w/conveyor, Slurrystore, steel machine shed w/lean-to for young cattle & 2 story 7 bdrm home w/single car garage.

Call Wilkinson Realty, Bill Noble
 608/723-4011

for further information

BEAUTIFUL FINGER LAKES AREA

SOUTHERN TIER FARMS MORE FARMS AVAILABLE

DAIRY/BEEF FARM...Main Barn 110x36, 2 silos, 40x60 Machine Shed, Milk House w/shower & seat, hay conveyor. Total of 151+/- acres w/100 tillable, 20 wooded, 2 ponds, House - 2 story, 5 bdrms, and garage. \$130,000. #3777

REDUCED PRICE - DAIRY/BEEF FARM...New Main barn - 72x90, Heifer barn - 32x66, plus other buildings Total acres - 237+/- acres with 200+/- tillable, creek, pond, panoramic views. Main house - Ranch (unfinished) w/5 bdrms, 3 baths, 28 x 32 garage. \$180,000. #3742

BEEF/DAIRY/CASH CROP FARM...Main Barn - 60x112, 59 cow ties, 12x30 silo concrete, 24x36 machine shed. Total of 115+/- acres with 70+/- tillable, part woods, 2 ponds - one natural, stream. House - newer beautiful Ranch, 3 bdrms, 3 baths, finished lower level, whirlpool, hardwood floors, vinyl siding, and much more. \$235,000. #3804

GENERAL FARM...296+/- acres with 150+/- tillable, 125+/- wooded, 3 acre stocked pond, creek, barns, sap house, main house - 2 story, 4 bdrms, 1 bath \$215,000. #3643

LOT OF LAND...Total of 247+/- acres, part tillable, part wooded 5,220 feet of Total Road front, year around creek & springs, some buildings 4 Separate package deals CALL TODAY FOR MORE INFO. Price for Total Package \$126,000. #3801

170+/- ACRE FARM...Streams, springs, part heavy forest, scattered apple trees, and 2 story house, 2 bdrms, 2 car garage, all with inspiring views \$95,000. #3774.

DAIRY/BEEF FARM...Main Barn - 60x60, 14x45 silo, machine shed, total of 60+/- acres with 20 tillable, 35 pasture, 5 wooded, year around creek House - 2 story, 4 bdrms, \$78,000. #3794

ACREAGE...180+/- acres mostly wooded, 176+/- acres part tillable, 79+/- acres tillable, and 47+/- acres tillable Call for more info. #3673.

MAKITRA REAL ESTATE, INC.

4 West Steuben Street
 Bath, New York 14810

607-776-6665 after hrs. 607-776-2468/2386

THE REAL ESTATERS OF MANSFIELD

1671 S. Main St., Mansfield, PA 16933
 (717) 662-2138 • Evening (717) 662-2363

"SHOWPLACE" FARM OPPORTUNITY!

72 Cows on 2 1/2" S S pipeline back-to-back 4 box stalls 75 head heifer shed 1 070 gal bulk tank & 6 Westfalia units 20x40 Harvester 18x70 Ribstone & 20x80 Ribstone silos Beautifully remodeled 2-story, 3 bdrm 1 1/2 bath home Detached 2-car garage w/3 bdrm apt overhead Approx 100 acres w/lease ground nearby Previously sold for \$350,000 Reduced to \$275,000. M-1081

TIOGA COUNTY VEAL FARM

Just minutes to Mansfield from 370 head operation w/ excellent tract record Designed for 4 animal groupings Facility on 22 7 acres 2 neighbor farms using manure Motivated seller reducing price from \$140,000 to \$129,900 M-979

MANSFIELD AREA HOME

Over 2500 sqft in this 2 story 4 bdrm . 1 1/2 bath home in Richmond Twp Vinyl siding roof, kitchen wrap around porch & deck all new since purchase 2 barns for garage, shop or animals 8 76 acres w/stream & old orchard **REDUCED TO \$159,500** #M-1027

BUILD, HUNT, FARM OR FLY

102 surveyed acres in Sullivan Twp minutes to Mansfield Good deal of tillable acreage w/some pasture & woods Pond site Air strip potential Perc approved w/more sites available Would subdivide **Asking \$84,900** Motivated Seller! M 962

TIOGA TOWNSHIP ACREAGE

17 63 surveyed acres gently rolling field in front Stream thru property w/woods in back Paved road frontage & utilities avail Approved sewage site for at grade dosed system **Just \$14,900.** M-1044

TIOGA COUNTY PA LAND & POND

90 66 acres of fields & woods featuring 5+ acre pond Good fishing & good hunting in area Approved sewage site Utilities avail Frontage on 2 roads near Mansfield PA **Asking \$99,900** M-934B

RUTLAND TOWNSHIP FARMETTE

Home camp or farm flexibility on 44 83 acres of fields pasture & woods Seasonal stream Home needing complete repair Former 2 sty 49 cow dairy barn stripped & in decent shape Existing well & septic Mansfield Schools Property Clean-up required **\$66,000** M-1013

85 ACRES - MANSFIELD SCHOOLS

85 85 surveyed acres on Rt 549 between Mansfield & Roseville Nice housing in area to protect your new home investment Some timber value in 30+ wooded acres Approved perc site **\$74,900** M-831

GREAT PRODUCE FARM!



109 acres adjoining the Buffalo Valley Produce Auction in Union Co. Very well kept farm with 6 wells, 2 ponds, 42x300 chicken/packing house, and much more.

BERKS CO. DAIRY

160 acres near Strausstown with a newer double-four parlor, 3 bedroom, 2 1/2 bath house with fireplace. Overlooks the Blue mountains with lots of potential.

CLEARFIELD CO. WOODLAND

Great hunting with easy access. Lots from 75-85 acres starting at \$50,625.

- > Have you thought about selling your farm or land?
- > Have you wondered what your farms market value is??
- > Call me for a FREE market evaluation of your property!!
- > Complete with pictures, comparable sales, and more!
- Lancaster, Berks, Chester and surrounding counties only.

FFA HORNING Farm Agency

PO Box 251
 Morgantown, PA 19543

MEMBER
 MLS



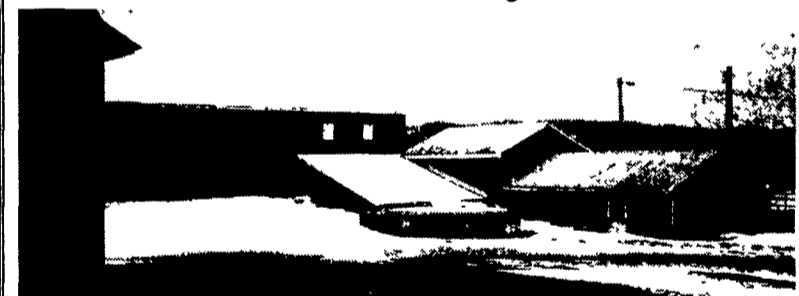
GERALD EBERLY
 (717) 445-6788
 (610) 286-5183

Franklin Co. Dairy Farm



100 Ac of good limestone soil, Bank barn w/small dairy & balance horses (Amish operation) 1200' of frontage on Rte 75 Frame Dwelling - 2 Unit (about 2100 Sq Ft.) 2 Baths, 5 Beds. Existing sawmill can be part of sale or cleared away. "Like kind exchange"

Fulton Co. Dairy Farm



New 1600 gal Mueller tank & milking parlor - Alpha Laval Equip. - Rolling terrain suitable for intensive grazing. 3 Streams - 2 Ponds

2 Frame Dwellings - 40x90 "new" equip shed & corn barn. New Roof & Siding on 3 Bay Bank Barn also nice horse barn

Lancaster Co. Hog & Poultry Farm



Presently In Operation - Can Be Bought Turn Key!
 73 Acre Limestone Soils

Capacities - 400 Sows - 1100 Head Finishing Barn
 150 Head of Beef (80' Bunk Feeder)
 2 Large Concrete Silos
 44x410 Bldg. w/Pullet Cages

Beautiful Dwelling - 2700 Sq. Ft. Limestone Home w/Attached 3-Car Garage, Large Workshop & Equipment Bldg. & Grain Storage. All Very Nicely Blacktopped, Set Back in w/Stream.

Call today for more information and private showing.

MAHLON OBERHOLTZER AGENCY

Your Central PA Farm Broker

Smoketown, PA 17576 (Lanc. Co.)

717-392-1177