

NEW WILMINGTON LIVESTOCK AUCTION

NEW WILMINGTON, PA
March 2, 1998

CATTLE 164... PDA ..Compared with last Monday's sale...sl. cows .50 to 1.50 lower. SLAUGHTER STEERS: few Select & Standard 49.00-55.00. HOLSTEINS: few Select & Standard 46.50-50.50. COWS: Breaking Utility and Commercial 35.50-39.00, couple to 42.00, Cutter and Boning Utility 30.75-36.50, Canner and Low Cutter 27.50-31.00. Shells down to 20.00. BULLS: few Yield Grade No. 1 1190/2025 lbs. 41.75-44.00, few No. 2 1140/1975 lbs. 39.75-41.50. FEEDER CATTLE: STEERS: Medium Frame No. 1 250/610 lbs. 67.50-84.00, Medium & Large Frame No. 2 300/775 lbs. 48.00-62.50; HEIFERS: few Medium & Large Frame No. 1 375/620 lbs. 65.00-74.00, Medium Frame No. 2 250/625 lbs. 48.00-59.50.

CALVES 153...VEALERS: Standard and Good 70/120 lbs. 23.00-34.00, few Utility 60 lbs. 5.00. FARM CALVES: No. 1 Holstein bulls 120/135 lbs. 75.00-90.00, 95/115 lbs. 88.00-92.00, 90 lbs. 65.00, No. 2 70/120 lbs. 40.00-77.00; few No. 1 Holstein heifers 90/130 lbs. 115.00-137.50, few No. 2 75/100 lbs. 40.00-92.50. Beef cross bulls and heifers 85/100 lbs. 65.00-110.00.

HOGS 341...Barrows and gilts 2.25 to 3.50 lower. BARROWS AND GILTS: US 1-2 220/260 lbs. 34.35-35.50, few to 36.00, US 1-3 210/280 lbs. 33.00-34.75, US 2-3 270/290 lbs. 30.00-32.50. SOWS: few US 1-3 345/735 lbs. 30.00-40.00. BOARS: few 225/450 lbs. 16.50-27.00.

FEEDER PIGS 9...Few US 1-3 60/70 lbs. 27.50. -- per head.

SHEEP 32...SLAUGHTER LAMBS: Choice 60/100 lbs. 87.50-90.00. SLAUGHTER SHEEP: 20.00-37.00.

GOATS 5...Few Medium & Large 41.00-57.00. --- per head.

Friend's Stockyard Inc.

Accident, Md. 21520
Report Supplied by Auction
March 2, 1998

STOCK BULLS AND STEERS (200-500 LBS.) 52.00-90.00.

STOCK HEIFERS: 36.00-75.00. SLAUGHTER STEERS: GOOD TO CHOICE 58.50-62.10; MEDIUM TO GOOD 56.00-59.50, HEAVY CHOICE OVER 1450 LB. 55.00-61.50.

HOLSTEIN STEERS: HEAVY CHOICE 37.00-52.00, LIGHT 38.00-45.00.

SLAUGHTER HEIFERS: GOOD TO CHOICE 58.25-62.00; MEDIUM TO GOOD 47.00-58.00.

BULLS: HEAVY 44.00-53.75, LIGHT

38.00-45.00.

COWS: UTILITY (HOLSTEIN) 35.00-41.25, COMMERCIAL TO GOOD 31.00-34.50, CULL COWS 30.00 AND DOWN.

VEALS: GOOD TO CHOICE 50.00-65.00, MEDIUM TO GOOD 20.00-46.00.

BOB CALVES: 27.00 AND DOWN. HOLSTEIN BULL CALVES — RETURN TO FARM (90 TO 120 LB.)-UP TO 91.00.

HOLSTEIN HEIFER CALVES — RETURN TO FARM (90 TO 120 LB.)-UP TO 108.00.

BEEF CROSS CALVES — RETURN TO FARM UP TO 64.00.

HOGS: TOP QUALITY UP TO 36.00, HEAVY UP TO 35.00, LIGHT 28.00-32.00.

SOWS: 29.00-32.50.

MALE HOGS: 21.00-28.00.

LAMBS, LIGHT AND FEEDER, NONE AVAILABLE.

SHEEP: 15.00-38.00.

LIVESTOCK PRICES ARE ALL GIVEN PER HUNDRED WEIGHT!

BELLEVILLE LIVESTOCK AUCTION

BELLEVILLE, PA
March 4, 1998

CATTLE 341... PDA ..Compared with last week's sale...sl. cows 1.00 to 3.00 lower... Supply included 226 cows in Dairy sale . HOLSTEIN STEERS: few Select 49.50-53.25, one Standard 42.25. HEIFERS: one Prime 1370 lbs. 65.25, Choice 1150/1450 lbs. 61.00-64.00, few Select 57.25-58.25, few Standard 47.25-48.25.

COWS: Breaking Utility and Commercial 36.00-40.75, Cutter and Boning Utility 32.00-37.50, Canner and Low Cutter 26.75-32.50. Shells down to 20.00. BULLOCKS: one Select 51.75. BULLS: few Yield Grade No. 1 1425/1730 lbs. 42.75-45.25, few No. 2 1400/1625 lbs. 41.00-41.75. FEEDER CATTLE: STEERS: few Medium & Large Frame No. 2 415/900 lbs. 44.50-54.50; BULLS: few Large Frame No. 1 530/715 lbs. 62.00-73.00.

CALVES 78...VEALERS: Standard and Good 75/110 lbs. 18.00-25.00, Utility 65/110 lbs. 5.00-18.00. FARM CALVES: Holstein bulls steady to 10.00 lower...No. 1 Holstein bulls 95/120 lbs. 70.00-95.00, few to 100.00, No. 2 85/120 lbs. 32.00-60.00 mostly 42.50-55.00, one No. 1 Holstein heifer 100 lbs. 75.00. Few beef cross bulls and heifers 90/100 lbs. 29.00-47.50.

HOGS 27...Barrows and gilts 3.00 to 4.00 lower. BARROWS AND GILTS: US 1-3 220/285 lbs. 30.00-32.75, US 2-3 215/295 lbs. 27.25-29.75. SOWS: one US 1-3 475 lbs. 24.25, one Medium 265 lbs. 15.00. BOARS: few 270/560 lbs. 13.00-16.00.

FEEDER PIGS 84...US 1-3 25/55 lbs.

14.00-26.00. --- per head.

SLAUGHTER LAMBS: few Choice 80/115 lbs. 72.00-88.00, few 125/155 lbs. 50.00-69.00. NEW CROP LAMBS: few Choice 40/55 lbs. 122.00-129.00. SLAUGHTER SHEEP: 36.00-50.00.

GOATS 45...Few Medium 79.00-85.00, few Large Nannies 60.00-71.00, few Large Kids 37.00-46.00, Small 7.00-16.00. --- per head.

HOLSTEIN COWS \$600.00-\$1150.00, few to 1400.00. --- per head.

LEESPORT LIVESTOCK AUCTION

LEESPORT, PA
March 4, 1998

CATTLE 317... PDA .. Supply included 114 slaughter steers and heifers, 137 sl. cows and 45 feeder cattle ...Compared with last Wednesday's sale...sl. steers and heifers unevenly steady, sl. cows 1.00 to 2.00 lower, bulls 2.00 to 3.00 lower. SLAUGHTER STEERS: Choice 1100/1465 lbs. 60.00-62.00, Select 55.00-59.00, Standard 43.50-51.75. HOLSTEIN STEERS: High Choice and Prime 1365/1590 lbs. 56.50-58.50, Choice 1290/1690 lbs. 53.50-56.50, Select 49.00-53.75, Standard 40.00-49.00. HEIFERS: few High Choice and Prime 1120/1325 lbs. 61.50-63.25, Choice 1100/1450 lbs. 59.00-61.25, Select 53.00-58.25, Standard 49.00-51.50.

COWS: Breaking Utility and Commercial 36.75-39.00, one 42.50, Cutter and Boning Utility 33.00-38.25, Canner and Low Cutter 28.00-35.25. Shells down to 20.00. BULLOCKS: few Select 44.00-54.00. BULLS: Yield Grade No. 1 1360/2170 lbs. 43.50-46.00, one 50.00, No. 2 1440/2615 lbs. 37.75-43.00. FEEDER CATTLE: STEERS: few Medium Frame No. 1 & 2 370/450 lbs. 67.00-76.00, 535/865 lbs. 42.50-51.00; HEIFERS: couple Medium Frame No. 1 & 2 190 & 220 lbs. 100.00, 315/490 lbs. 62.00-69.00, few Large Frame No. 2 440/590 lbs. 56.00-57.00; BULLS: couple Medium Frame No. 1 & 2 315 lbs. 85.00, 535/740 lbs. 58.00-62.00, 825/885 lbs. 41.00-52.00.

CALVES 153...VEALERS: Good and Choice 110/230 lbs. Standard and Good 80/105 lbs. 18.00-22.00, Utility 60/80 lbs. 12.00-17.50. SLAUGHTER CALVES: Good and Choice 395/630 lbs. 47.00-66.00. FARM CALVES: Holstein bulls uneven, with spots to 10.00 lower...No. 1 Holstein bulls 95/125 lbs. 75.00-105.00, 80/90 lbs. 65.00-80.00, No. 2 75/115 lbs. 25.00-70.00; few No. 1 Holstein heifers 100/105 lbs. 100.00-105.00, few No. 2 70/105 lbs. 25.00-42.50. Beef cross bulls and heifers 80/135 lbs. 30.00-105.00.

HOGS 61...BARROWS AND GILTS: US 1-3 265/280 lbs. 32.75-34.75, US 1-3 220/270 lbs. 30.25-32.50. SOWS: US 1-3 325/460 lbs. 21.00-27.00, 555/760 lbs.

22.00-26.50. BOARS: few 295/760 lbs. 15.00-16.00.

FEEDER PIGS 89...US 1-3 30/50 lbs. 37.50-65.00. --- per cwt.

SHEEP 19...SLAUGHTER LAMBS: few Choice 90/95 lbs. 90.00-92.50. NEW CROP LAMBS: few Choice 55/85 lbs. 117.50-155.00. SLAUGHTER SHEEP: few 25.00-45.00, Yearlings 65.00 & 67.50.

GOATS 19...Few Nannies 40.00-52.50, Large Kids 30.00-55.00. --- per head.

Greencastle Livestock

Greencastle, Pa.
March 5, 1998

CATTLE 180...PDA...COWS UNEVEN, 1.00 HIGHER TO 2.00 LOWER. HOLSTEIN STEERS: SELECT COUPLE 45.00-50.00, COUPLE STANDARD 40.75-44.00.

COWS: BREAKING UTILITY & COMMERCIAL 35.50-40.25, CUTTER & BONING UTILITY 32.75-37.25, CANNER & LOW CUTTER 24.25-33.50. SHELLS DOWN TO 19.50.

BULLS: YIELD GRADE NO. 1 ONE 1175 LBS. 45.50.

FEEDER CATTLE: HEIFERS FEW M1&2 220-405 LBS. 68.00-73.00, ONE LOT AT 60.00. BULLS: COUPLE L2, 465 & 815 AT 54.00.

CALVES: 245. STANDARD & GOOD 80-120 LBS. 20.00-28.00, UTILITY 55-85 LBS. 11.00-21.00 FEW AT 5.00.

FARM CALVES: HOLSTEIN BULLS 10.00-30.00 LOWER THAN LAST THURSDAY, NO 1 90-125 LBS. 40.00-96.00 MOSTLY 60.00-90.00. NO. 2 80-125 LBS. 25.00-42.50. HOLSTEIN HEIFERS NO. 1 FEW 90-135 LBS. 67.00-76.00. NO. 2 80-100 LBS. 24.00-40.00. BEEF CROSS BULLS & HEIFERS 75-110 LBS. 22.00-67.50.

HOGS: 6 SOWS: FEW 1-3 445-575 LBS. 25.00-28.00.

FEEDER PIGS: 0. SHEEP: 0. SLAUGHTER SHEEP ONE AT 41.00.

GOATS: 4. NANNIES: LARGE COUPLE 52.50 & 67.00, KIDS: LARGE COUPLE AT 25.00.

Tobacco Referendum

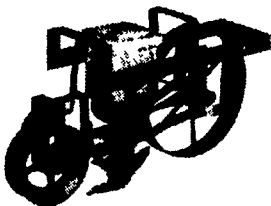
(Continued from Page A1)

port loans for the next three years. If quotas are disapproved, production will not be limited and price support loans will not be available to Pennsylvania tobacco growers. Pennsylvania has never

voted in favor of quotas for the Pennsylvania Type 41 tobacco. The Maryland Type tobacco grown in Pennsylvania and Maryland was last grown under quotas in 1965. Pennsylvania farmers who grew tobacco in 1997 are eligible to vote in the referendum.

Quality Vegetable Implements

PLANET JR.
Vegetable Drill



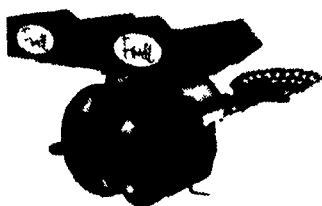
SITREX
Fertilizer Spreader



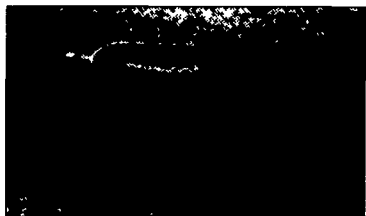
HOWARD
Rotavator



POWELL
Transplanter



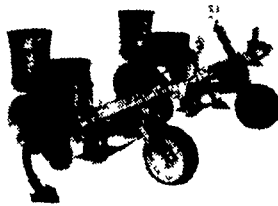
SPRINGFIELD
Disc Harrow



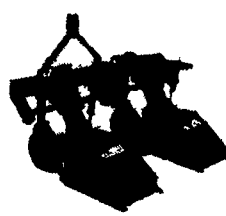
SOLCOOR
Spider Cultivator



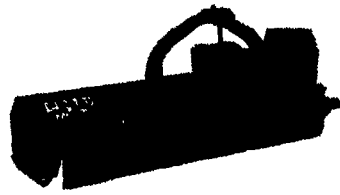
COLE/POWELL
Planter



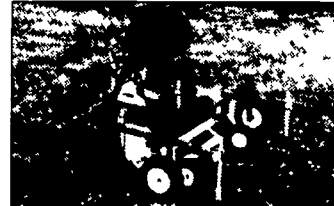
MULTIVATOR
New Crop Tiller



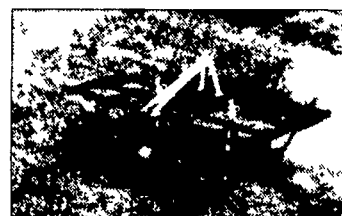
FERRI
Mulcher/Mower



BUCKEYE
Mulch Layer



BUCKEYE
Bed Shaper



We offer a wide range of tractor implements for your vegetable farming needs. Please call or write for literature (specify product) and the name of your local dealer.

J.S. Woodhouse Co., Inc.

P.O. Box 1169, 1314 Union Street, West Springfield, MA 01090
(413) 736-5462 • FAX (413) 732-3786

Since 1843

Branch Warehouses

Lewisberry, PA
Syracuse, NY
Waterville, ME

717-938-5100
315-463-5201
207-873-3288