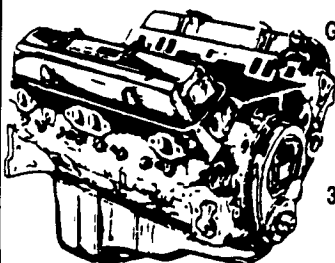


JONES

Goodwrench ENGINE HEADQUARTERS



GM GOODWRENCH
350 V8 1973-85
Part Number
10067353
New Engine - Not
Rebuilt
36 Month or 50,000
Mile
Warranty

New Engine - No Core Fee **\$1199⁰⁰**

**WE'LL
MATCH ANY
COMPETITOR'S
PRICE!**

**6.5L
GOODWRENCH
DIESELS
From
\$3,175**

Call 394-0711 for prices on other New or
Remanufactured
Goodwrench Engines. 2.5 Liter thru
454 cid. Gas and Diesel

Chevrolet - Pontiac - Olds - Buick - Cadillac - GMC

JONES GM PARTS CENTER

1335 Manheim Pike, Lancaster, PA 17604
Easily Located on Rt. 72 Just off of Rts. 283 & 30
Hours: Mon-Fri 7:30 a.m. - 9 p.m. Sat 7:30-3
(717) 394-0711



Wisconsin fast back tag-along, 15 ton electric, 90% rubber and brakes, new deck, paint, lights, rebuilt from ground up, book, \$6,000 negotiable. (717)542-5822.

MOTORS

New & Rebuilt
350, 366, 427, 454

6.2 Diesels
Rebuilt & Used

Will Install
Roll Back Service,
(at cost)
717-762-6415



1989 Chevy 5-10

Shortbed, 2.5 liter engine, 5-speed,
AM/FM/Cass, 89,000 Miles, Fiberglass Cap

\$3,000

717-367-6920

Excellent shape



1987 GMC 6 Cyl. (Isuzu) Diesel, 20 Ft.
Danco Roll Back, 5 Speed, 106K,
21,700 GVW

\$12,300

(717) 755-6946

KEIM

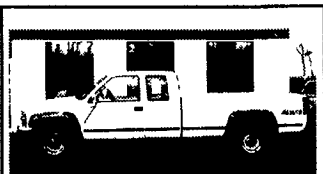
YOUR CHEVY GEO FAMILY

(717) 768-8225
(800) 223-KEIM

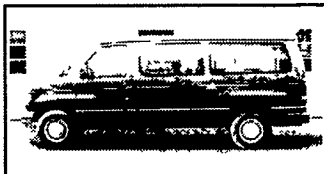
RT. 30 Lincoln Highway East
Paradise, PA 17562

YOUR TRUCK, VAN & 4x4 HEADQUARTERS

1-800-223-KEIM



95 CHEVY SILVERADO 4X4
3/4 T Extended Cab, 4x4, Auto,
A/C, 35,000 Miles



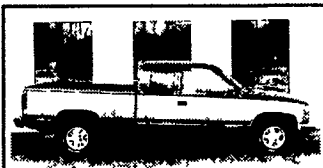
96 FORD CLUB WAGON
E350, 12 Passenger, 5 8 V8,
Auto A/C, 42,000 Miles



98 CHEVY DUMP TRUCK
3500 HD 4x4, 12,000 GVW



91 GMC EXTENDED CAB
Sierra, 2 WD, Silverado, V8,
Auto, A/C, PW, PL



94 GMC SLE
Extended Cab, V8, 2WD,
Auto, A/C



94 CHEVY SILVERADO Z71
Shortbed, V8, Auto, U/C, PW, PL,
51,000 Mi



91 GMC SAFARI
AWD, Auto, A/C, 7 Passenger



98 CHEVROLET G30 CARGO VAN
Auto, A/C, Adrian Upfitters
Custom

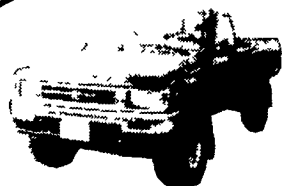
Largest Stocking & Selling Extended Cab GMC Dealer in 7 States

JONES BEST BUY 4X4'S TRUCKS

PONTIAC • HONDA
GMC TRUCK
1335 Manheim Pike,
Lancaster

Prices based on straight sale, Tax & Tags extra. Trades accepted at actual cash value. Must present this ad at time of purchase for sale price.

JONES
717-394-0711



'94 TOYOTA 4x4
5spd, 4cyl, 43K Miles
#7748 Was \$13,900
SALE \$10,880



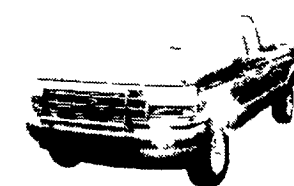
'97 GMC K15 XCAB 4x4
AT, AC, 350, SLE, Brn Door
#7776 Was \$25,800
SALE \$22,800



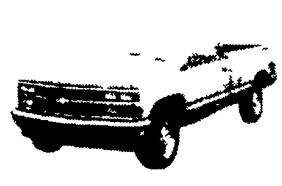
'97 GMC C1500
AT, AC, 350, SLE, Black,
Save \$4,100
#18230 List \$23,030
ONLY \$18,900



'93 GMC C3500 X Cab, 6.5 Turbo
AT, AC, SLE, 38K Miles
#7772 Was \$18,900
ONLY \$16,850



'94 FORD F150 4x4 XLT, AT, AC, V8, 34K Miles
#7771 Was \$17,800
SALE \$15,500



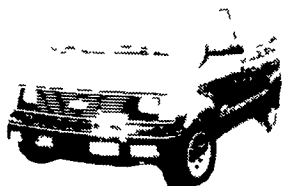
'88 CHEV K15 4x4
350 Silverado, A/C,
5-Spd., 90K #7738
ONLY \$6,900



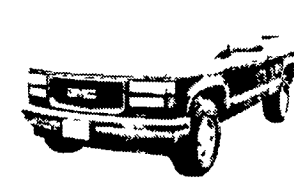
'96 PLYMOUTH VOYAGER
AT, AC, V6, 7 Pass
#7733 Was \$16,800
SALE \$13,700



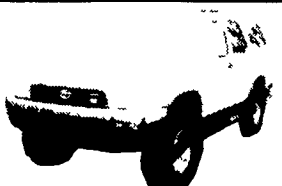
'97 GMC YUKON 4x4
SLE, AT, AC, 350, 18,000
Miles #7735 Was \$30,700
SALE \$27,900



'91 CHEV ASTRO AWD, AT, AC, V6, SLT
#7768 Was \$8,900
SALE \$6,450



'97 GMC K15 4x4
V8, AT, AC, 6' Bed, 7K Miles
#7764 Was \$20,750
SALE \$19,100



'95 TOYOTA 4 RUNNER
4x4, SE, V6, AT, Air, 25k Miles
#7787 Was \$25,800
SALE \$21,970



'94 GMC SUBURBAN 4x4
Starcraft Conv, AT, AC, V8,
40k Miles #7786 Was \$26,500
SALE \$22,800



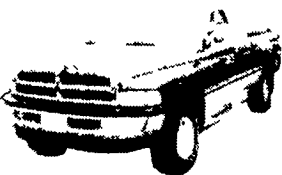
'96 CHEV ASTRO VAN AWD, AT, AC, V6
8 Pass, 28k Miles #7785
Was \$17,990
SALE \$15,400



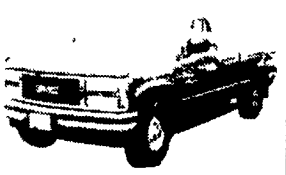
'94 OLDS BRAVADA
AWD, AT, AC, V6, Loaded
#7784 Was \$17,700
SALE \$14,800



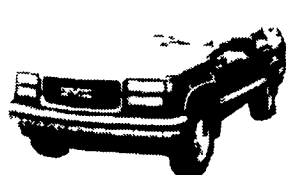
'94 CHEV K15 CAB 4x4 AT, AC, 350, Silverado,
38k Mile #7783
Was \$21,400
SALE \$18,700



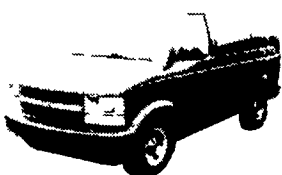
'96 DODGE XCAB 4x4 AT, AC, V8, SLT, 31k
Miles #7779 Was \$25,400
SALE \$22,700



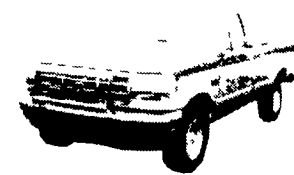
'93 GMC K15 XCAB 4x4
SLX, AT, AC, V6, Clean
#7778 Was \$15,900
SALE \$13,200



'95 GMC YUKON 4x4 AT, AC, V8, SLE
#7775 Was \$24,995
SALE \$22,350



'97 CHEV ASTRO
AT, AC, V6, CS, 8 Pass
#7774 Was \$18,700
SALE \$15,200



'94 FORD F150 4x4
XLT, AT, AC, V8, 34k Miles
#7771 Was \$18,700
SALE \$15,100