

96 Ford F250 4x4, 361 V8, automatic, 24,000 miles, XLT, most power options, heavy GVW, call for details. Countryside Auto Center, Rt. 272, Adamstown, 717/484-4371.

Aluminum dump box, construction type, 18' floor needs work, no hoist, \$1650; '78 Chevy 2500 4WD, 350 4-spd, high miles, body poor, runs good, gooseneck hitch, \$1600. 717/463-3938 No Sunday calls.

Aluminum dump 26'; older flatbed trailers. 717/464-2354.

Cat 3116 engine; Cat 3306T engine. Best offer. 717/445-6156.

Chevrolet 1983 16' walk in work van, aluminum body, dual wheels, new 350 gas, V-8 engine, four speed, excellent condition. \$4,995. (717)637-1929

F700 72' stakebody runs; 50's F150 pickup poor condition; 50's Dodge pickup, poor condition. 717/464-2354.

FOR SALE: 1991 Chevy crew cab truck, heavy duty type, good condition, with contractors cap. Call after 6pm, (717)866-2353.

Ford 850 super duty 69' truck w/Dempster hyd. roll off system; Welding truck 600 amp F750 cabover 70's 717/464-2354.

For Sale: 1991 Ford L7000, 30,000 GVW, 24' van, fresh brakes, 4000 miles on engine, 6-spd trans, fair rubber, good shape, \$7500. Call 717/469-7437.

Front & rear rears, SSHD's, 6:17 ratio, very good. 717/243-6657.

Hart 2 horse slant GN 1996 aluminum, rear tack, 7' LS, 5' SS, DR, \$10,200 FIRM. (814)322-1575

Heil Farm pickup milk tanker, 6200 gallon, SS frame, 2-compartment, hydraulic powered. 717-390-1047

Hillsboro gooseneck trailer, 24,000# GVW, twin Bogi 8-wheel electric brakes, 9x14.5, 12-ply tires, fold down cattle sides, loading ramp, roll tarp, Binkley 5th wheel hitch, D.O.T. approved. 610-678-2103

Int. Eagle cabover sleeper, 1977, twin screw Reyco suspension, w/air, 350 hp, 10-speed Road Ranger PS. AC. 717/445-4853.

LESHER Mack SALES & SERVICE

27th & Cumberland St. Lebanon, Pa 17042
Route 422 West



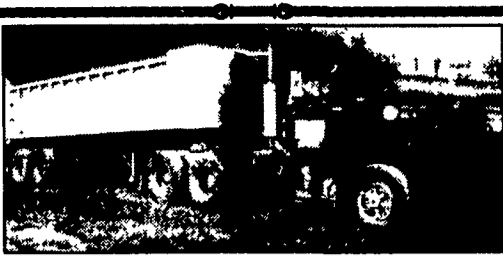
1995 MACK CH 613, E7-350, V-MAC, T2090 Trans., Ratio 3.86, AL40 Air Ride, 11R24.5 Tires on Alum. Wheels.



1993 CH 613, E7-350, RTX 14709H, Air-DS402-411R, Steel Disc, Hublot, 192WB, 42 in. Highrise, Tank Fairings, 500,000 miles. Plenty to choose from.

5 (4) 1994 CH 613 (Clean Trucks), Day Cabs, E7-300 (could be made 350) RTX 1709H, 9-Spd, 12 Ft, 38 Air Ride, Eaton Rears, 4 11 R, 151" WB, 22.5 Disc. Wheels, PS, AC.

717-273-4535



88 MACK R690 ST
300+ Eng, 5 Speed, 352K Miles
Excellent Condition
\$13,500

1970 Hill 28' Alv.
Dump Trailer - Good Cond
\$5,900

717-289-4349

KLEINFELTER CHEVROLET Sport Utility Sell Off

1997 Chev Suburban **\$29,499** 1997 Chev Tahoe **\$28,299**

1996 GMC Yukon **\$25,999** 1996 Chev Tahoe LT **\$27,999**

1995 Chev S-10 Blazer LT **\$16,999** 1995 Chev S10 Blazer LS **\$15,999**

1995 Chev S-10 Blazer LS **\$15,999** 1994 Ford Explorer **\$14,999**

717-865-2158

M-T-T 8-8; W-F 8-6; Sat. 8-4

1989 Ford B-700 Bus
Ford 6.6 Diesel Allison Auto, PS, Front & Rear Air, Cloth Seats 30 Passenger Capacity, Exc Body
\$6,950

1984 International S-1900
S/A Dump DT466, Allison Auto, PS Air Brakes
Runs Good Needs Paint & Rust Repairs
\$5,500

Also (1) 87 Crew Cab - Same Price

1980 International S-1800
S/A Dump V8 Gas Allison Auto PS Air Brakes
Sale Priced **\$2,500**

1988 Ford CF 8000
S/A Tractor 7.8 Diesel 240 HP 5 Spd 2 Spd PS Air Brakes 33 000 GVW Under 100 000 Miles MD Inspected
\$8,750

(2) To Choose From Sull Air Air Compressors with John Deere Diesels, Model #160DUOJD, 160 CFM, Low Hours, Exc. Cond., In Enclosed Utility Bodies.....**\$2,500/ea.**
1988 GMC 7000 S/A Dump, 8.2 Turbo, 5 Spd 2 Spd, PS, AC, 33,000 GVW, New Paint **\$11,000**
1990 GMC 7000 Topkick w/22 Ft. Box, 3208T, 5 Spd, 2 Spd., PS, Air Brakes, 32,000 GVW, Will Separate Box **Call**
1987 GMC 7000 w/22 Ft Box V8 Gas, 5 Spd, PS, Lo-Pro, Needs work **\$4,500**

Klines Truck & Equipment

Hagerstown, MD 21740 **301-797-4068**
Located off I-81 at MD/PA line

Lancaster Farming, Saturday, March 7, 1998-D39

Mack MS250 1987 GVW 32,000, 6-cyl turbo diesel, full air-brakes, 24' Grove rollback, 72,000 original miles. Call 410-877-9889.

Mountain View Trailers looking for dealers to sell good quality trailers. Call Tim 717/423-5181.

CASH FOR USED DIESEL TRUCKS!

WE NEED 1/2 TON TO ONE TON:
• FORD DIESELS
• SUPERCABS
• CREW CABS
• DODGE CUMMINS
• 2WD OR 4X4
• DUALIES
• DUMPS
• UTILITY BODY
• FLAT BEDS
• CAB & CHASSIS
• SUPER DUTIES

LOW MILEAGE ONLY PLEASE

Before you sell or trade your diesel in somewhere else for LESS.

CALL US!

We Pay More for Used Diesel Trucks Than Anyone. TRY US!

717-949-2000

OR

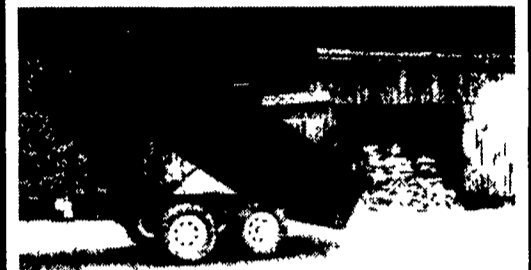
610-678-3243

Ask for Smokey or Kay



RD 7, Box 405
Lebanon, PA
17042

Load Boss Trailers



Quality Built Hwy. Dumps

Built To Suit Your Working Needs

6x10 7,000 GVW. **\$2,999**

6x10 10,000 GVW..... **\$3,299**

Delivery Available

Save \$ Buy Direct
From The Manufacturer

814-623-8696

HUNTER KEYSTONE PETERBILT LP

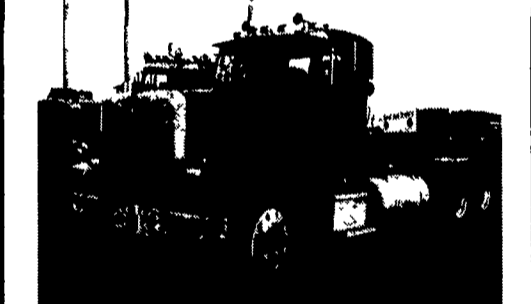


1467 Manheim Pike • Lancaster, PA 17604

717 299-6630 • 800 243-2458



1993 IH 9300, 350E, Cummins Eng., Power Steering, Air Ride Susp., 4.44 Ratio, Day Cab



1993 Peterbilt, 378, CAT 3406B, 425 Hp Eng, Power Steering, Air Ride Susp, 4.33 Ratio, RTO 14609B Trans



1992 Peterbilt 37-119, 350 Hp, Cat, RTO 14609 Trans, DS402- 4 11 Rear Axle, 36" Sleeper, Low Ride, Air Susp



1987 Peterbilt 359-127" 3406B, 425HP Eng, RTO14715 Trans, Perde Air Leaf Susp, Eaton 40,000 R Axle, 63" FT Sleeper, All Alum Wheels

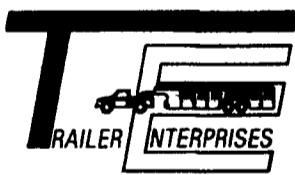


1987 Peterbilt 362, w/90" Sleeper 3406-400 HP eng., PTO 14609B Trans., Air Leaf w/Rod Susps: DS381 Rear Axle; Hyd. PTO & Blowers

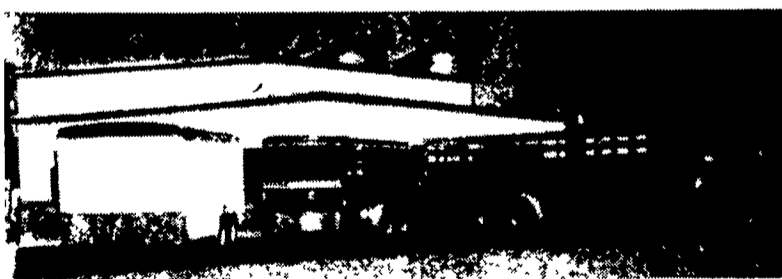


1994 International 9300 3406C, 425 Eng, 13 Speed Trans, 48" Walk-In Sleeper; Jake Brakes, 3.90 Ratio, Int. Air Ride Susp

"Revvin' to take care of ALL your trailer needs."



HAS BUILT A REPUTATION



United Expressline
8x16 Cargo

Bison
616HPT

Aluminum
7x20 Gooseneck

NEW & USED: STOCK - HORSE - CARGO - INDUSTRIAL - UTILITY - CAR HAULERS

Trailer Enterprises is here to serve you. We are a full service facility providing YOU with the very best service available in the industry!

TRAILER ENTERPRISES, INC.

13121 MAUGANSVILLE ROAD
HAGERSTOWN, MD 21740

Just give us a call at (301) 791-5343.

Hours: 8AM-5PM Monday-Friday
9AM-12 Noon - Saturday