

**16 FERTILIZER**

**Sweet 'n (K) with Sulfur  
PARA-AG**

14014 Paradise Ch. Rd.  
Hagerstown, MD 21742  
Info. Phone: 301-745-1473 or  
301-797-3483

**Min. Analysis**

40% Cal. Ox. 200 Mesh 98% Dry  
1.5% Mg. Ox. 100 Mesh 99% Dry  
2.5% K<sub>2</sub>O (Potash) 60 Mesh 99% Dry  
3% SO<sub>2</sub> (Sulfur) 20 Mesh 99% Dry  
72% CEC Reg. MD, PA

Application: Damp  
Farmers: Direct Field Delivery  
Dealers Wanted: Handle, Apply and  
Stock Pile

Correct your P.H. and add 2 valuable  
nutrients in same product

F.O.B. Hagerstown, MD  
Call For Pricing

**17 PLANTS**

Rooted Cuttings: Vinca  
Vine, Yellow Strawflower,  
Blue Scaveola, Blue  
Torenia, New Guinea Impatiens. (518)673-8223

Taking orders for 609 and  
41 greenhouse tobacco  
plants. 717-786-2493

We are taking orders for  
cabbage, broccoli, caulif-  
lower plants for spring  
planting. Christian K. Esh,  
2008 Horseshoe Rd., Lan-  
caster, PA 17602  
717-299-3721

**18 FRUITS &  
VEGETABLES**

12 1/2 hp Kohler engine  
w/2 1/2" Monarch pump,  
plus roll cage, 300' lay flat  
hose, etc, new 1996, best  
offer, (717)285-2696.

E-ZY Grower green-  
houses, in stock, 21x48'  
\$880; 21x96' \$1,660;  
24x96' \$1,886. Tufflite  
greenhouse plastic, Mod-  
line gas heaters, potting  
soil, flats, inserts, plastic  
mulch and drip irrigation  
supplies. Write or call for  
FREE catalog. Martin's  
Produce Supplies, 625 Brit-  
tan Rd., Shippensburg,  
PA, 17257 (717)532-5918.

Bryon 103 sweet corn  
harvester, like new, asking  
\$7500. Central PA  
717/433-3580.

Complete tomato grader  
5'x4' components, Haines  
water flume, grading tables  
& sizing units, Lobee brush  
waxer, tri-pack dryer, as-  
sorted conveyors, 9 auto-  
matic tri-pack box fillers  
w/75' power rollers and  
automatic traffic cops.  
Complete price \$30,000.  
Call for detailed informa-  
tion. 717-587-1725

600 treated cyprus tomato  
stakes 4', .15cents each;  
Challenger #1800 plastic  
mulch lifter, \$900; water  
wheel transplanter \$1,000;  
Planting wheels \$50; 8' en-  
closed shelved plant trailer  
\$200.; Snyder County,  
717-539-2272. No Sunday  
Calls.

Strawberry Plants- Earli  
Glow, Delmarvel, Honey  
Oye, Raritans, All Stars,  
Sparkles, Late Glow, Wi-  
nonnas. 1000 plants per  
case, \$93.00; Mixed var-  
ties to a case, \$120. Add  
12% to total cost to get  
shipping cost. PA residents  
add 6% sales tax unless  
tax no. is included. Closed  
Sundays. Long Lane  
Greenhouse, Reuben B.  
Fisher, 1977-A Mine Road,  
Paradise, PA 17562. 6  
miles south of Strasburg to  
Georgetown. Get Mine Rd.  
1 mile north on Mine Road

Tomato stakes, \$10/ea.  
FMC Fruit & Vegetable  
washline w/weight sizers,  
round table, drop bins,  
\$7500. Self-propelled uti-  
lity cart for spraying, \$2500.  
410-758-3099

**STONE MOUNTAIN GROWERS**

MIFFLINTOWN, PA

|                          | Norway Spruce | White Spruce | Colorado Blue Spruce | White Pine  | Concolor |
|--------------------------|---------------|--------------|----------------------|-------------|----------|
| 4'-5'                    | \$26          | N/A          | \$28                 | N/A         | \$34     |
| 5'-6'                    | \$32          | N/A          | \$34                 | N/A         | N/A      |
| 6'-7'                    | \$40          | N/A          | \$40                 | \$36        | N/A      |
| 7'-8'                    | \$50          | \$45         | \$50                 | \$36        | N/A      |
| 8'-9'                    | \$70          | \$65         | \$74                 | \$50        | N/A      |
|                          |               | 1 1/2"-2" C  | 2"-2 1/2" C          | 2 1/2"-3" C |          |
| Red Sunset Maple         | \$55          | \$65         | \$85                 |             |          |
| Autumn Blaze Maple       | \$55          | \$65         | \$85                 |             |          |
| Sugar Maple              | \$55          | \$65         | \$85                 |             |          |
| Deborah Norway Maple     | \$55          | \$65         | N/A                  |             |          |
| Royal Red Maple          | \$55          | \$65         | N/A                  |             |          |
| Super Form Maple         | \$55          | \$65         | N/A                  |             |          |
| Emerald Queen Maple      | \$55          | \$65         | N/A                  |             |          |
| Weeping Cherry, Mulberry | \$55          | \$65         | \$75                 |             |          |
| Kwanzan Cherry           | \$55          | \$65         | \$75                 |             |          |
| Krauter's Vesuvius Plum  | \$55          | \$65         | N/A                  |             |          |
| Honeylocust Shademaster  | \$45          | \$55         | N/A                  |             |          |
| Pin Oak                  | \$45          | \$55         | N/A                  |             |          |
| Camperdown Weeping Elm   | \$55          | \$65         | \$75                 |             |          |
| Zelcova                  | \$45          | \$55         | \$65                 |             |          |
| Ash 3 Species            | \$45          | \$55         | N/A                  |             |          |
| Glenleven Linden         | \$45          | N/A          | N/A                  |             |          |
| Jacquemont Birch         | \$55          | \$65         | N/A                  |             |          |
| Crabs, White, Pink, Red  | \$40          | \$50         | \$60                 |             |          |

Trees 1 1/2" Caliper & Less Available - \$35

Red Sunset, Autumn Blaze and Sugar Maple Available in  
3' C+ at \$100.00 and Weeping Cherrv Available At \$75.00

717/436-9564

**19 NURSERY**

Bark mulch and mushroom  
soil, trailer loads and  
smaller loads also avail-  
able. Garman's Coal and  
Mulch Products,  
(717)653-9580.

Black Walnut tree stand-  
ing, 57" round, 13' main  
trunk, no iron.  
(717)868-6147

Clearing NURSERY  
STOCK, row run prices,  
Hemlocks, Arbs, yews etc  
Call for prices.  
(410)398-3082.

Easy-Lawn 600 gallon  
hydro-seeder, 1997,  
\$8,500; Harley power rake,  
6' 1996, \$4,400; NH555  
skid steer loader, 1993  
1200hrs., \$10,900; Bobcat  
943 1,150hrs., 1989,  
\$17,500 obo.  
(717)456-7410

EVERGREEN  
SEEDLINGS &  
TRANSPLANTS.  
Spruce, Pine, Fir for Christ-  
mas trees & nursery stock.  
Write or call for price list.  
Crosshaw Nursery, P.O.  
Box 339, Columbus, NJ.  
08022. or call  
609-298-0477

Japanese Maples, Blood-  
good, 8-12", \$3.00; Garnet  
& Red Select, 12-15",  
\$4.00; 15-18", \$5.00. Lar-  
ger sizes available. Cava-  
gnaro Nursey, 154 Fairview  
Drive, Neshanic, NJ.  
08853. (908)369-5899

LANDYSHADE MULCH  
P R O D U C T S  
717-898-7689. Mushroom  
Mulch 100bu, \$70; 500bu,  
\$170, 1200bu \$198. Mulch  
delivered FREE within 25  
miles of Lancaster. We  
carry Bark Mulch, Topsoil

MUSHROOM SOIL AND  
BARK MULCH. We deliver.  
Akron Nursery Inc., PA  
(717) 859-1101  
(800)485-7525

TC-120 ULTRA ALUMI-  
NUM pickup dumpers,  
w/ad \$2995. TRUCK-  
CRAFT ORWIGSBURG.  
717/366-0790.

Trailer, 2-axle, 24' deck, 5'  
Beaver tail, 12,000# ca-  
pacity, needs new decking,  
\$2000 firm. 609-894-2849

Tree Spade Vermeer  
TS60S on 73 GMC 7500  
series V6, \$25,000.  
717/225-1694 after  
5:30pm.

Tree Spades, 20" to 60";  
Tree Planters, 3" shoe to  
24" shoe; Tree Boss, one-  
man tree loading system.  
TREE EQUIPMENT DE-  
SIGN INC. RD 1, Box 104,  
New Ringgold, PA 17960  
717/386-3515.

Want to buy Christmas tree  
farm or Douglas & Frazer  
Fir on the stump. Please  
call 814/692-4110.

Container & B&B Nursery  
Stock, Wide Selection  
For free price list.  
Stoudt Landscape  
& Nursery  
RD 2, Box 1324  
Schuylkill Haven, PA 17972  
717/739-4650

- Douglas Fir •
- Concolor Fir •
- Blue Spruce •
- White Pine • White Spruce •
- Norway Spruce •
- Black Hill Spruce • Hemlock •
- Arborvitae •
- Maple Trees • Dogwoods •

Cut and B&B  
FINE QUALITY  
AFFORDABLE PRICE  
Delivery Available  
Custom Tree Digging &  
Planting Available

CHRISTMAS  
BARN  
FARMS  
P.O. Box 198  
New Ringgold, PA 17960  
(717) 386-2107

**NURSERY STOCK FOR SALE**

Azaleas, Rhodod, Flowering Trees  
Junipers, Arborvtaes  
Call For Price Lists

**MASKELLS MILL NURSERIES**

Salem, NJ  
(609) 935-4675 Fax (609) 935-6623

**TWIN BROOK TRANSPLANTS**

Quality in product  
Integrity in business

Many species of Firs, Spruces,  
Pines, and Hemlock shipped fresh  
to your doorstep

Order Now for April Delivery

**TWIN BROOK PLANTATIONS**

Located in Northeastern PA

1-800-595-GROW • 717-256-3440 Fax

Choice evergreen planting stock for Christmas  
tree, landscape, and conservation planting.

"We're working harder to serve you better"

**Landyshade**

Mulch  
7601  
717-898-7689  
Raintree  
We also sell  
mulch & topsoil

**Quality**

Shaded  
Evergreens  
Luzerne Co  
717/864-3532

**FOR SALE**

12' Lawn Roller  
(717) 748-1093

**MILLER'S GREENHOUSES**

Wholesale Growers  
Bedding Plants - Perennials  
For FREE 1998 Plant List

Write: Miller's Greenhouses, Inc.  
485 Church St., Landisville, PA 17538  
(717) 898-8741

**20 LAWN &  
GARDEN**

**GROFF  
TREE MOVING SERVICE**

Contract Digging  
24 to 81" B&B (B&B)  
Any Amount - Anywhere  
-Buy Sell Wholesale  
Call Don 717-664-4587

Grasshopper 411 w/  
mower, nice condition,  
\$2500. 717-445-4541

Hey Penn State fans, for  
\$2.00 donation you get a  
change to win a special  
edition Penn State Lawn  
Tractor! \$3,000 value and  
other prizes. Call  
717-445-4084 for more  
info. Proceeds for Terre Hill  
Fire Co.

Honda commercial walk  
behind mower, paid \$900  
only \$350. 717-445-4541

John Deere 317, new en-  
gine, 48" mower, snow-  
blower, cab, chains,  
weights, \$3,200.  
(717)272-5640.

Kubota Snowblower, com-  
plete for B6100D & 7100D,  
\$500 (firm). Bucks Co,  
(215)357-1381.

Massey 1210 4WD diesel  
tractor, hydro trans, 54"  
mower, 16 hours, like new,  
\$10,900. 717/354-2892.

New Massey Ferguson  
16hp, 44" mower, hydro  
trans, clearance, only  
\$2499. With no interest or  
payment till September 1,  
1998! Supplies limited.  
717-445-4541

New Steiner 430 Max, 100  
hrs, 60" mower, 3pth,  
snowblower, hyd. V-blade,  
hyd. scoop, w/trailer,  
\$17,000. Will separate.  
717/266-0575.

New Troybilt clone 5hp,  
rear line, \$699.  
717-445-4541

Scag 20hp, 52" zero turn  
mower, runs good, \$3700.  
717-445-4541

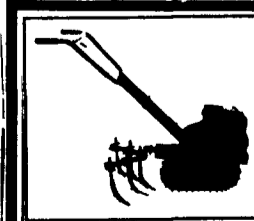
Steiner 420 diesel, VG  
condition, \$4000; Honda  
5518 FWD w/deck, as new,  
\$5500. 301/733-4425.

Used Yanmar, 18hp, 4WD,  
very nice, \$5500 OBO.  
717-445-4541

WANTED TO BUY: 500  
Jumbo Belgian blocks to  
be delivered to Valley  
Forge, PA. 610-648-0208

WANT TO BUY antique &  
old Gravelys, attachments,  
literature. Any condition.  
(610)942-4901.

**20 LAWN &  
GARDEN**



**BEACHY CAT**

endless track  
garden tractor  
SINCE 1942  
\$685.00

(Free Shipping if check  
with order)

"Cultivate your garden fast and easy"

**Burkholder Equipment**  
44 Duncan Rd., Shippensburg, PA 17257  
717-532-3360 or 1-800-456-7516

**Clip and Save**

3% Discount  
Till April 1st

**FARM FOR PROFIT**

Step 1 - Remedy and Achieve will help you get  
life and balance back into soil, greatly reducing  
compaction, water runoff and soil erosion

Step 2 - Proper Plant Nutrition with the use of  
Liquid 3-18-18 Fertilizer foliar or seed applied  
100% available at time of planting

Step 3 - Using Vegetable oil will reduce chemical  
cost by 50% Use Remedy in manure pits you  
will get more usable organic nitrogen, less  
solids, odor in your manure

**Amos K. King Jr.**

1150 E. Oregon Rd., Lititz, PA 17543  
717-656-0067

Daniel F. Stoltzfoos  
549 Gibbons Rd  
Bird-In-Hand, PA 17505  
717-661-7343

Jonas S. King  
122 Krantz Mill Rd  
N Providence, PA 17560  
717-786-7990  
Leave Message

Elam R. Stoltzfus  
RD #2 Box 547  
Jersey Shore, PA 17740

Christ S. Fisher  
2050 Cambridge Rd  
Honey Brook 19344

Samuel R. Stoltzfus  
324 Bartville Rd  
Kirkwood, PA 17536

Jonathan Glick  
375 Ziegler Rd  
Howard, PA 16841  
717-726-6589

Daniel R. King  
688 Kessler Rd  
Millersburg, PA 17061  
717-362-1114

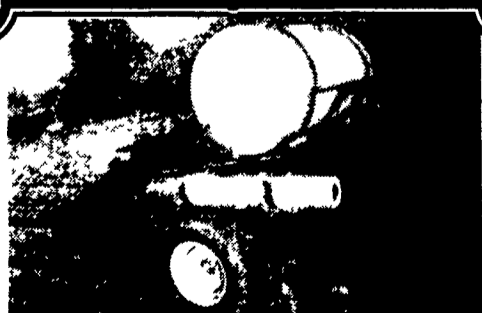
Daniel's Farm Store  
324 Glen Brook Rd  
Leola, PA 17540  
717-656-6982

Norman Sauder  
243 Deysher Rd  
Kutztown, PA 19530  
610-683-3561

Sam Beiler  
152 N New Holland Rd.  
Gordonville, PA 17529  
717-354-7737

Keith Martin  
PO Box 61  
Talmage, PA 17580  
717-656-8241

**18 FRUITS &  
VEGETABLES**



**PLASTIC LAYER &  
TRANSPLANTER  
COMBINATION**

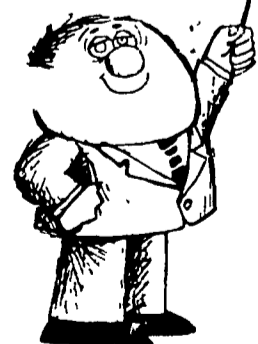
Save You Lots of Time & Money.

For more information write or call

Eve. 7:00 to 8:00 — 717-626-5809

**KINGSWAY MFG.**

192 W. Millport Rd., Lititz, PA 17543



**A LESSON  
WELL  
LEARNED...  
LANCASTER  
FARMING'S  
CLASSIFIED  
ADS  
GET RESULTS!**