

Public Auction Register

Closing Date Monday 5:00 P.M.
of each week's publication

WED DEC 2 - 6:30PM 100 W Jackson St, New Holland, Lanc Co, Pa Winross, Hess, farm & toys A&C Dffenbach Auction Inc
FRI DEC 4 - 7PM New Holland Sales Stables, Inc, 101 W Fulton St, New Holland, Lanc Co, PA Horse Sale 717-354-4341

SAT DEC 5 - 10:30AM Mei's Stables, 834 Wallace Rd, New Holland, Lanc Co, PA Horse Sale Mel Hoover Auct 717-354-8397

MON DEC 7 - 10AM 100 W Jackson St, New Holland, Lanc Co, Pa Hay, grain & straw auction A & C Dffenbach Auction, Inc

WED DEC 9 - 10AM Wolgemuth Auction, 109 N Maple Ave, Leola, Lanc Co, PA Wolgemuth Hay Sale Dennis Wolgemuth, Auct

FRI DEC 11 - 9AM 100 W Jackson St, New Holland, Lanc Co, Pa Tractors, farm equip, & supplies A&C Dffenbach Auction Inc

FRI DEC 11 - 12 Noon Middleburg Livestock Auct Sls, Inc Middleburg, PA Dairy Sale Clarence Shirk & John Shirk, Owners 717-837-2222

SAT DEC 12 - Lebanon Valley Lst Mkt, 1 mi E of Fredericksburg, PA along Rt 22 Work, driving & riding horse sale Consign welcome, 717-866-5783 Keith Byers & Gerald Hoover, Aucts

MON DEC 14 - 10AM 100 W Jackson St, New Holland, Lanc Co, Pa Hay, grain & straw auction A & C Dffenbach Auction, Inc

TUES DEC 15 - 548 Alexander Spring Rd, Carlisle, PA Fed Cattle Sale Carlisle Livestock Market, Inc, 717-249-4511

TUES DEC 15 - 7PM 548 Alexander Spring Rd, Carlisle, PA Christmas Sale, lambs & goats Carlisle Livestock Market, Inc, 717-249-4511

TUES DEC 15 7:30PM 548 Alexander Spring Rd, Carlisle, PA Feeder cattle sale Carlisle Livestock Market, Inc, 717-249-4511

NOTICE!!!

Look For Public Sales
Scheduled Past Deadline
On Second To Last Page
Of Section A

WED DEC 16 - 10AM Wolgemuth Auction, 109 N Maple Ave, Leola, Lanc Co, PA Wolgemuth Hay Sale Dennis Wolgemuth, Auct

WED DEC 16 & THURS DEC 17 - 8:30AM 5174 Horst Rd, Chambersburg, PA Lawn & garden, misc (Wed), farm machinery & tractors (Thurs) Marion Auction Service, 717-375-4700

FRI DEC 18 - 1PM 548 Alexander Spring Rd, Carlisle, PA State graded feeder pig sale Carlisle Livestock Market, Inc, 717-249-4511

SAT DEC 19 - 10:30AM Mei's Stables, 834 Wallace Rd, New Holland, Lanc Co, PA Horse Sale Mel Hoover, Auct 717-354-8397

MON DEC 21 - 10AM 100 W Jackson St, New Holland, Lanc Co, Pa Hay, grain & straw auction A & C Dffenbach Auction, Inc

SAT DEC 26 - 8:30AM - Tack 11AM Horse Sale Middleburg Lst Auct Sls Inc, Middleburg, PA Clarence Shirk & John Shirk, Owners 717-837-2222

MON DEC 28 - 10AM 100 W Jackson St, New Holland, Lanc Co, Pa Hay, grain & straw auction A & C Dffenbach Auction, Inc

TUES DEC 29 - 548 Alexander Spring Rd, Carlisle, PA Fed Cattle Sale Carlisle Livestock Market, Inc, 717-249-4511

WED DEC 30 - 10AM Wolgemuth Auction, 109 N Maple Ave, Leola, Lanc Co, PA Wolgemuth Hay Sale Dennis Wolgemuth, Auct

NOTICE

To assure that your Public Sale appears in the Public Sale Section we must have your advertisement by 5 P.M. Tuesday of each week's publication.



ALL POINTS AUCTION CO.
LEBANON, PA
717-270-4555

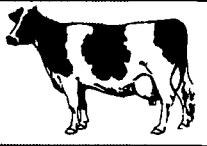
Dairy and Livestock Sales

got milk?

Willier, Inc.
Quality Cattle
We are always looking for Dairy Cattle - Registered & Grade
Call 717-626-3113

NEW HOLLAND SALES STABLES, INC.

New Holland, Pa.
Located 12 Miles East of Lancaster, just off Rt. 23



DAIRY SALE WEDNESDAY, MARCH 4, 1998

11:00 A.M. OPEN & BRED HEIFERS
12:00 NOON BULLS, FRESH COWS, SPRINGERS

Weekly Consignors

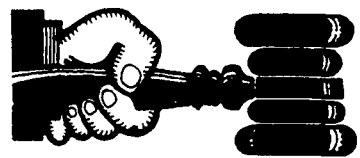
- Merle Breneman
- Dale Hostetter
- Marvin Eshleman
- Jim Hostetter
- Leroy Smucker
- Daniel Z. Stoltzfus

Note To Consignors!
Please send all information along with your cattle Tues Fresh date, breeding dates, milk weights, TB & blood test charts with your trucker

FRESH COWS And SPRINGERS

Note: Our 1st Heifer Spring Heifer Sale Will be May 2nd, Saturday

Sales Managed By
New Holland Sales Stables, Inc.
Barn 717 354 4341 Fax 355 0706 Home 717 397 5538
Norman & David Kolb, Mgrs. 61L



AUCTIONEER'S DIRECTORY

TO CONSIGN EXCESS EQUIPMENT AT
ALEX LYON'S ATLANTIC CITY, NJ AUCTION,
MARCH 26TH THRU 28TH, 1998



Call **Stu Harris**

DAY & NITE

609/429-9149 609/429-9149
Beeper # 609/229-0234 Fax 609/429-4267



AUCTIONS MONDAY AT 3 P.M.

Estates, Antiques,
Household & Specialty Sales
Rt. 272, Denver
No Buyers Fee (717) 336-2861 Pickup Available

ROGERS COMMUNITY AUCTION INC.

Located 8 Miles East Of Lisbon, Ohio Or One Mile West Of Rogers, Ohio On St. Rt. 154.

FRIDAYS

Produce, Egg, Miscellaneous Auction Starts At 6 P.M.
Poultry Auctions Start At 6 P.M.
Doors Open At 7:30 A.M.
To Accept Consignments
Open Air Market All Day And Evening
Doors Open At 7:30 A.M. To Rent Market Spaces. Over 2.5 Miles Of Outside Concessionaries And 30,000 Sq. Ft. Under Roof.

TUESDAYS

Farm Machinery Consignment Auction
The 1ST TUESDAY EVENING OF EACH MONTH at 3 P.M. sharp.
We are open the preceding Monday of each sale day to check in consignments from 8 A.M. to 8 P.M. Handling farm machinery, lawn and garden equipment, tools, fire wood, cut lumber and related miscellaneous items. Five auctioneers operating simultaneously

Hay And Straw Grain EVERY WEDNESDAY selling truck load lots by the bale or ton starting at 1 P.M.
Barn Opens at 8 A.M. to Consign

Jim and Ken Baer
Auctioneers and Managers
Phone (330) 227-3233 or (330) 227-3236
"Sales Every Week Since 1955"

Absolute Auction Complete Farm Dispersal - Spring Run Jerseys

150 Head Jerseys - Tractors - Skid Loader
Parlor, Barn & Dairy Equipment



Owners have other interests. All sells without reserve on location 15 - STONEPILE RD. NEW WILMINGTON, PA Directions. Take St. Rt. 158 three miles north of New Wilmington Sale Barn to Stonepile Rd. & left to 1st farm..OR..from Ohio take Interstate 80 east of Youngstown into PA to Exit 2, St. Rt. 19 Mercer & north on Rt. 19 1/4 mile to McDonald's Restaurant & left 1/2 mile to Rt. 158 & south 3 miles to auction. Watch for KIKO signs .

Sat., March 14, 1998 - 10:00 AM

JERSEY DAIRY CATTLE: 110 adult cows, approx. half 1st & 2nd lactation. Mostly AI sired, part AI bred plus herd bull. 17 pasture bred heifers to start freshening. 17 head breeding age open heifers, 20 head yearling to calves. BF 4.8 - P 3.9 Somatic Cell 300,000. Some real descent individuals. Good set of heifers. Better plan to attend. Several reg cows and some eligible. Cows haven't been pushed. No B.S.T. Mike Schmuck, Pedigrees & cow info. (330) 875-4804.

PARLOR, DAIRY & BARN EQUIPMENT: Delaval 3' Lo-Line s.s. pipeline w/s.s. receiver group & auto. wash - (12) Boumatic Mod. 2000V auto. vac. takeoffs - (12) Delaval super Claw units - (6) Westfalia pulsators - Double 6 Clay Herringbone parlor w/s.s. splash guards, new '91 - Westfalia 7 1/2 hp vacuum - pump - s.s. Balast tank - Delaval 1000 gal. bulk tank w/newer comp., SN 61313 - (2) s.s. pails - cow & heifer breeding wheels - Apollo SX18 semen tank - 80 gal. elect. hot water heater - Goulds high pressure parlor pump - (4) poly dome hutches - (2) 100 gal. stock tanks - Harvestore 10' roller mill & motor - 16' Patz ring drive unloader, emptied 3 silos - 16' Jamesway ring drive unloader, been rebuilt - 30 Patz belt conveyor - 6x16 auger & 6x25 auger both w/motors - homemade tilt hoof trim table.

TRACTORS - SKID LOADER - VAN: White Field Boss 2-105, cab, 18.4 x 38 radials, axle duals, MFWD, 3200 hrs. - White Field Boss 2-85, WF, 3 pt., 18.4 x 38, 5000 hrs. - Int. 1256 Turbo, 18.4 x 38 radials, dual hyd. - Int. 966, WF, 3 pt., 18.4 x 38, dual remote, 5000 hrs. - Int. 1066, WF, 3 pt., 18.4 x 38, radials - 15 mo. old Case 1840 diesel skid loader, 1100 hrs., mat. bucket plus Quick Tatch pallet fork & tire scraper sold separate - 1987 Dodge Caravan, auto. - 18.4 x 38 Snap On duals - 18.4 x 38 hub mtd. duals.

FORAGE & HAY EQUIP.: 1 Owner Case Int. 781 Harvester w/2 row adj. corn head & open end hay head w/Hydra Sharp - N.H. 28 Whirt-A-Feed blower - (2) like new Dion 1016SE forage boxes w/3 beaters, roof & 12 T Pequea 1286 tandem gears - (2) older Dion forage boxes w/12T tandem gears - NH 489 haybine - NH 256 rake - Int. 3 pt. sickle bar Dyna Balance mower - Pequea 7 3 pt. brush hog, v. good skeleton elevator.

GENERATOR - REEL AUGIE MIXER - MANURE AUGER - TILLAGE EQUIP. - OTHER MACHINERY: 2 yr. old Knight Reel Augie 3300 TMR mixer wagon w/scales - 1 owner Gehl #22 PTO 3 pt. semi solid manure loader w/hyd. auger - martin Helude side delivery tandem axle spreader, Mod. S-1678 - J.D. 780 Hydra Pulu spreader w/tail gate - White 588 5 x 18 auto. reset plow - White #5100 4x36 corn planter, dry - Winco 20,000 watt PTO generator - new Demco 300 gal. transport crop sprayer - White 14' trans. disc - McConnel 16' transport harrow - post hole digger - port. air comp.

TERMS ON CHATTELS: Cash or check w/proper I.D. auction day.
AUCTIONEER/REALTOR: Rusty Kiko, C.A.I. Pa. Lisc. #AU-002727-L
AUCTION BY ORDER OF: Spring Run Farm Partnership - Dean L. & Sandra Moose - Gary & Sheryl Ligo

RUSS KIKO ASSOC., INC. AUCTIONEERS (330) 455-9357



RICHARD T. KIKO AGENCY, INC. REALTORS (330) 453-9187

2805 FULTON DR. N.W. CANTON, OHIO 44718

Professional AUCTIONEERING
MARTIN AUCTION SERVICE
410 W. Church Rd. Ephrata, PA 17522 (717) 733-3511
Real Estate • Farm Equipment • Antiques • Household Goods
It doesn't cost to use our Auction Service...It Pays.
CALL TODAY!!

HFA HORNING
Farm Agency, Inc.
Courteous Real Estate Services
Professional Auctioneers
State Certified Appraisers
Specializing in Farms and Land
Alvin Horning, Broker
Route 23, Morgantown, PA
(610) 286-5183

Sweetbriar
AN AUCTION GALLERY SPECIALIZING IN FINE DOLLS
PO Box 37 • Carlisle, Md 21919 • 0037 • 410-275-2094

KREIDER, KLINE & GOOD
AUCTIONEERS COMPLETE PROFESSIONAL AUCTION SERVICE
REAL ESTATE - FARMS & RESIDENTIAL PERSONAL PROPERTY - ANTIQUES - FARM STOCK SALES - LIQUIDATIONS
RANDAL V. KLINE AUCTIONEER-REALTOR 717-733-1006
LLOYD H. KREIDER AUCTIONEER 717-786-3394
ROY E. GOOD, JR. AUCTIONEER (717)445-4309