

# FFA Train To Conduct Partners For A Safer Community



From left, Carolyn Howard, Kerry Hoffman, and Cynthia Shaffer participate in the state trainers' workshop for Partners for a Safer Community, held in Atlanta, Ga.

UNIVERSITY PARK (Centre Co.) - Cynthia Shaffer, West Snyder FFA advisor, Carolyn Howard, a ninth grade student and a West Snyder FFA member, and Kerry Hoffman of Penn State University were selected by the National FFA Foundation to participate in the first national workshop for state trainers of "Partners for a Safer Community" in Atlanta, Georgia on January 23-24.

As a special project of the National FFA Foundation, Partners for a Safer Community is a national collaborative effort to promote agricultural youth safety and health through education, community development and youth leadership. To help accomplish this goal, the group has compiled an instructional package and youth safety program model for use by community leaders.

The National FFA Foundation selected one FFA advisor, one FFA member, and one safety-interested community leader per state to attend the workshop to understand the Partners for a Safer Community model and prepare to train interested community groups throughout the state upon returning home.

"Partners for a Safer Community is an excellent avenue to promote agricultural safety issues," says Mrs. Shaffer. "We plan to pilot the program on the local level because I want to see for myself how this program works before we conduct a state workshop in October. There is so much educational information on safety already available and this program will put it in the hands of educators and community leaders."

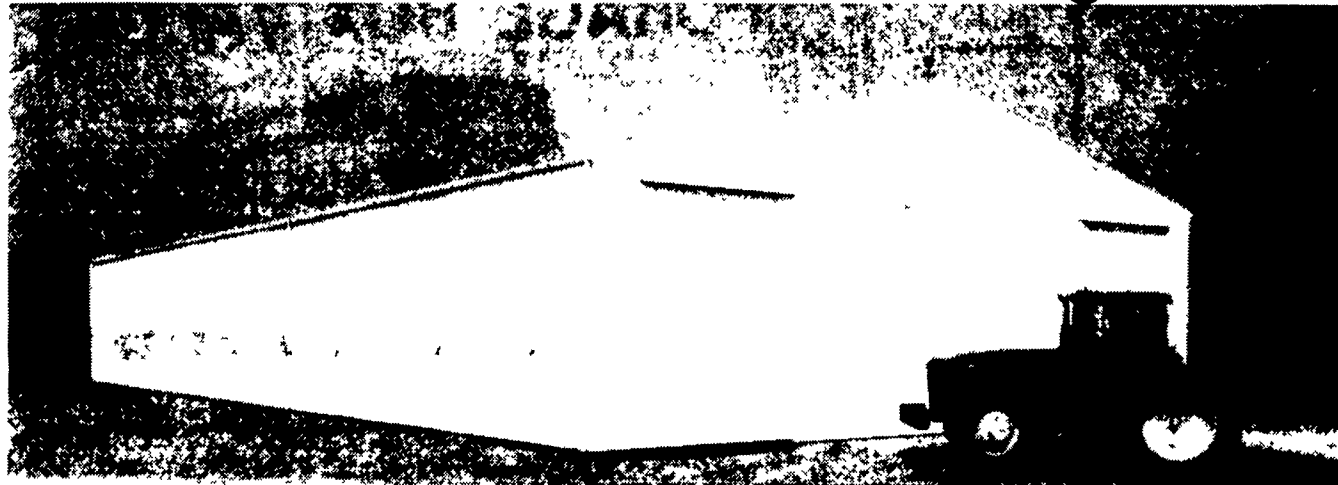
"Several hundred adolescents die from agriculture-related injuries each year and more than 22,000 are seriously hurt," said Julie Sesions, Partners for a Safer Community project director. "We believe establishing Partners for a Safer Community programs nationwide that promote safety education and youth leadership will play an important role in deterring these unintentional deaths and injuries in the future."

Major sponsors of Partners for a Safer Community are John Deere, Lorschand 15G, Pioneer Hi-Bred International, Inc and WK Kellogg Foundation. Contributing sponsors include the Equipment Manufacturers Institute, New Holland, Phillips Petroleum company and Soybean Digest/Helping Hand Club.

Program collaborators include Farm Safety 4 Just Kids, National Association of Agricultural Educators, National Farm Medicine Center, National FFA Organization, National FFA Foundation, Inc., National FFA Alumni Association, Inc., National Institute for Occupational Safety and Health, National Council for Agricultural Education, NYFEA - The Association for Education Agricultural Leaders, Teaching Agricultural Safety to Kids and Cooperation Extension System.

For more information about Partners for a Safer Community program and local workshops, contact Cynthia Shaffer at (717)658-8144.

## Technology, Quality, and Value- That's Morton Buildings

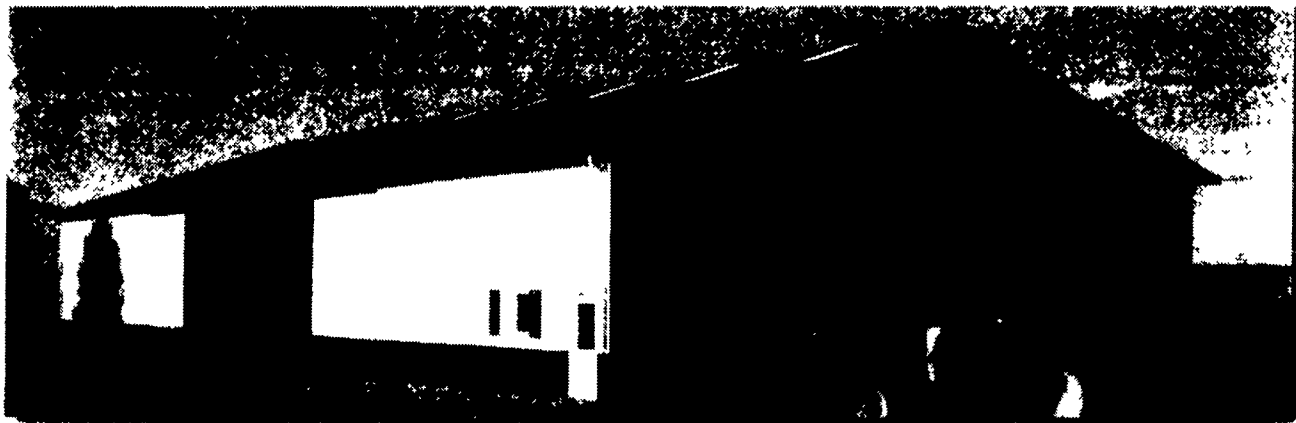


### Basic Morton Machine Storage 60'x13'x105' Raised Chord with 7'6" Truss & Column Spacing

- 27'x14'6" AlumaSteel® Double End Door
- 1-White Walk-In Door (no glass)
- Heavy-Gauge Commercial Quality Steel
- G-90 Galvanizing
- White Polyester Paint Finish
- KYNAR 500®/HYLAR 5000® Color Trim
- Heavy-Gauge Aluminum Gutters & Downspouts
- 50-year Column Warranty (including labor)
- 50-year Snowload Warranty (no weight limit)
- 10-year Wind Warranty on AlumaSteel® Doors (no MPH limit)
- 5-year Wind Warranty (no MPH limit)
- Free Morton Weathervane
- Fully Erected, Tax Included

**\$31,195**

OFFER EXPIRES 4/30/98



### Deluxe Morton Machine Storage 60'x13'x105' Raised Chord with 7'6" Truss & Column Spacing

- 1-27'x14'6" AlumaSteel® Double End Door
- 1-22'6"x13' AlumaSteel® Double Sidedoor
- 1-3'x6'8" 9-lite Walkdoor
- 1 - 4'x3' 9-lite Sliding Window with Screen and Shutters
- Heavy-Gauge Commercial Quality Steel
- Continuously Vented Ridge
- 2' Gable Overhangs
- 1' Vented Eave Overhangs
- Interior Protective Liner
- Exterior Steel Wainscot
- Heavy-Gauge Aluminum Gutters & Downspouts
- KYNAR 500®/HYLAR 5000® Paint System on Sidewalls
- Revolutionary FLUOROFLEX 2000® Paint System on Roof
- 20-year Red Rust/Fade Warranty (including acid rain)
- 50-year Column Warranty (including labor)
- 50-year Snowload Warranty (no weight limit)
- 10-year Wind Warranty on AlumaSteel® Doors (no MPH limit)
- 5-year Wind Warranty on Entire Structure (no MPH limit)
- Free Motor Weathervane
- Fully Erected, Tax Included

**\$39,995**

OFFER EXPIRES 4/30/98



**MORTON BUILDINGS**

P.O. Box 399, Morton, IL 61550  
© 1997 Morton Buildings, Inc

717/624-3331 908/454-7900

3368 York Rd. P.O. Box 126,  
Gettysburg, PA 17325 Phillipsburg, NJ 08865

800-447-7436 Illinois only, call 1-800-426-6686

All warranties include materials and labor, and are not protected. Special pricing includes taxes, materials, delivery, unloading, and labor to erect within 40 miles from a Morton Buildings, Inc construction center. Customer must provide a site prepared to Morton Buildings, Inc Site Specifications From 153 a (i.e. a level site without underground obstruction) and participate in Morton's progressive payment plan. Prices may vary because of local building codes. Due to local price variations, these prices do not include concrete. Offer expires April 30, 1998. Prices may vary for every 1,000 feet over 6,000 feet of elevation. KYNAR 500® Trademark of Elf Atochem, NA HYLAR 5000® Trademark of Ausimont, USA FLUOROFLEX 2000® and AlumaSteel® Trademarks of Morton Buildings, Inc



**YES!**

*The* **WOOD MASTER**

Hot Water Outdoor Wood Furnace  
Hot Air

**ROSENBERY STOVES**  
(717) 532-9023