

**NY Phila Frozen Eggs**  
**ATLANTA, GA.**  
**FEBRUARY 20, 1998**  
**EASTERN REGION FROZEN EGGS, FEBRUARY 20, 1998. FEDERAL-STATE**

Prices were unchanged. The market tone was generally steady. Demand was mixed, and mostly fair. Supplies remained at least adequate. Liquid and frozen eggs (ingredients included) processed under federal inspection in the Eastern region for the week ending February 14, 1998 were 4% greater than both the previous week, and the same week last year. Raw material supplies were generally adequate, and prices were unchanged to higher.

**WHOLESALE SELLING PRICES (CENTS PER POUND IN 30 LB. CONTAINERS)**

TRUCKLOTS LTL (MIN. 25 CONT.) RANGE MOSTLY RANGE  
 WHOLE 48-51 49-50 52-62 BLENDS  
 (I) TFEWR 63-75 WHITES 35-37 37-38-50 SUGARED YOLKS (MIN 43% SOLIDS) 78-80 78-79 81-89 SALTED YOLKS (MIN 43% SOLIDS) 74-76 76-77-86  
 (J) - WHOLE PLUS YOLK PLUS SWEETENER, GENERALLY 28-32% EGG SOLIDS.

THREE CENTS HIGHER FOR MEDIUMS, AND UNCHANGED ON THE BALANCE. THE MARKET TONE WAS FULLY STEADY TO FIRM. DEMAND RANGED LIGHT TO GOOD, BEST WHERE RETAIL FEATURES WERE IN PROGRESS. SUPPLIES WERE GENERALLY ADEQUATE TO AVAILALBE AND HELD WITH IMPROVED CONFIDENCE. BREAKING STOCK SUPPLIES WERE ADEQUATE. LVIE HEN SUPPLIES CONTINUED SUFFICIENT FOR FULL PROCESSING SCHEDULES.

PHILADELPHIA: PRICES TO RETAILERS, SALES TO VOLUME BUYERS, USDA GRADE A AND GRADE A WHITE EGGS IN CARTONS, DELIVERED STORE DOOR, CENTS PER DOZEN: EXTRA LARGE .69-.75; LARGE .67-.73; MEDIUM .54-.61.

12-14 LIVERS (5 POUND TUBS) 20-25 GIZZARDS (HEARTS) 45-50 INCLUDES NEW YORK CITY METROPOLITAN AREA, NORTHERN NEW JERSEY, MASSACHUSETTS, CONNECTICUT, RHODE ISLAND, AND PENNSYLVANIA (NORTHEAST OF HARRISBURG). \* TODAY'S NEGOTIATED SALES AS OF 11:30 A.M.

**Hackettstown Poultry & Egg**

Hackettstown, N.J.  
**Report Supplied by Auction Tuesday, February 24, 1998**  
**Report Supplied by Auction**  
 GESESE EACH 10.00 EA., .45 LB. BANTAMS .80 LB. ROOSTERS .70-1.20, 3.00-6.25 EA. BUNNIES 3.75-5.00 EA. RABBITS .80-1.65, 2.00 EA. PIGEONS 2.00 EA. GUINEAS 6.00-6.50 EA.  
 GRADE A EGGS: WHITE EXTRA LARGE & JUMBO .63-.83, LARGE .61-.83, MEDIUM .58-.75. BROWN EXTRA LARGE & JUMBO .78-.90, LARGE .54-.79, MEDIUM .50-.74.

**NE Chicken Parts 1&2**  
**ATLANTA, GA.**

**FEBRUARY 25, 1998**  
**NORTHEAST BROILER/FRYER PARTS - PART I FEDERAL-STATE**  
 Trucklot buying activity was slow. Offerings were ample on b/s breast, irregular on breast and wings, balance of parts were at least sufficient for trade needs. Retail and distributive movement was seasonal and reported as mostly light. The market tone was weak on b/s breast, balance of items were mostly steady.  
 PRICES PAID PER POUND, ICE PACKED AND CO2 PACKED BROILER/FRYER PARTS, DELIVERED TO FIRST RECEIVERS IN POOL TRUCKLOT AND TRUCKLOT QUANTITIES.  
 ITEM CURRENT NEGOTIATED TRADING\*  
 BREAST - B/S 150-155 BREAST - WITH RIBS 79-80 BREAST - LINE RUN 79 LEGS 41-42 LEG QUARTERS (BULK) 28-29 DRUMSTICKS 34-35 THIGHS 36-37 WINGS (WHOLE) 73-74 BACKS AND NECKS (STRIPPED)

**National Egg Market**  
**ATLANTA, GA**

**FEBRUARY 25, 1998**  
**NATIONAL EGG MARKET - AT A GLANCE:**  
 Prices were unchanged to higher in the Northeast, Southeast, and Midwest, unchanged elsewhere. The market tone remained mixed from steady to firm. Demand was irregular, mostly moderate to good and best where retail features were advertised. Supplies on the West Coast were light, and elsewhere generally adequate or available and held with increased confidence. Breaking stock supplies were generally adequate for the light to good demand with buyers in the Central States paying higher prices. Light type hen sup-

**North Atlantic Shell Eggs**  
**February 26, 1998**

**Atlanta, Ga.**  
 IN BOSTON MEDIUM PRICES WERE UNCHANGED TO TWO CENTS HIGHER, EXTRA LARGE AND LARGE WERE UNCHANGED. IN PHILADELPHIA, EXTRA LARGE AND LARGE PRICES WERE UNCHANGED TO TWO CENTS HIGHER, MEDIUMS WERE UNCHANGED TO ONE CENT HIGHER. PRICES PAID TO PRODUCERS IN NEW ENGLAND WERE ONE CENT HIGHER ON EXTRA LARGE AND LARGE.

plies were short to adequate.  
 USDA/AMS POULTRY PROGRAMS, MARKET NEWS BRANCH For additional information, please call (404) 562-5850.

**Pa. Grain**  
**February 23, 1998**  
**Report supplied by PDA**  
 COMPARED TO LAST TUESDAY'S MARKET FOR EASTERN AND CENTRAL PENNSYLVANIA: CORN STEADY TO .05 LOWER, WHEAT STEADY TO .07 LOWER, BARLEY & OATS STEADY TO .05 LOWER, SOYBEANS STEADY TO MOSTLY .10 SPOTS .15 LOWER, BAR CORN STEADY TO WEAK. PRICES PAID DELIVERED TO DELIVERS DOCK: ALL PRICES PER BUSHEL, EXCEPT BAR CORN PER TON.

**SOUTHEASTERN PENNSYLVANIA**  
 CORN NO. 2-Y RANGE 2.95-3.15, AVERAGE 3.05, CONTRACT FOR HARVEST 2.76-3.03, WHEAT NO. 2 RANGE 3.15-3.33, FEW REPORTED 3.02, AVERAGE 3.25, CONTRACT FOR HARVEST 3.24-3.42; BARLEY NO. 3 RANGE 2.30-2.60, AVERAGE 2.45, CONTRACT FOR HARVEST, FEW REPORTED 1.95; OATS NO. 2 RANGE 1.60-1.90, AVERAGE 1.73; SOYBEANS RANGE 6.50-6.90, AVERAGE 6.71, CONTRACT FOR HARVEST 6.20-6.42; FEW REPORTED GRAIN SORGHUM, RANGE 2.93, AVERAGE 2.93; AVERAGE MOISTURE NEW BAR CORN RANGE 72.00-110.00, MOSTLY 84.00-94.00, AVERAGE 88.86.

**SOUTH CENTRAL PENNSYLVANIA**  
 CORN NO. 2-Y RANGE 3.00-3.10, FEW REPORTED 3.19, AVERAGE 3.05; WHEAT NO. 2 3.00-3.10, FEW REPORTED 3.30, AVERAGE 3.08; BARLEY NO. 3 RANGE 2.00-2.50, AVERAGE 2.25; OATS NO. 2 RANGE 1.50-1.75, FEW REPORTED 1.95, AVERAGE 1.73; SOYBEANS NO. 1 RANGE 6.25-6.70, AVERAGE 6.48; AVERAGE MOISTURE NEW BAR CORN, RANGE 75.00-92.00, AVERAGE 83.86.

**EASTERN AND CENTRAL PENNSYLVANIA SUMMARY**  
 CORN NO. 2-Y RANGE 2.83-3.15, AVERAGE 3.02; WHEAT NO. 2 RANGE 3.00-3.33, AVERAGE 3.16; BARLEY NO. 3 RANGE 2.15-2.60, AVERAGE 2.36; OATS NO. 2 RANGE 1.50-1.90, AVERAGE 1.74; SOYBEANS NO. 1 RANGE 6.40-6.80, AVERAGE 6.60; AVERAGE MOISTURE NEW BAR CORN, RANGE 70.00-94.00, AVERAGE 82.24.

**WESTERN PENNSYLVANIA**  
 CORN NO. 2-Y RANGE 2.57-3.02, AVERAGE 2.92; WHEAT NO. 2 RANGE 2.83-3.25, AVERAGE 3.05; BARLEY NO. 3 RANGE 2.20-2.37, AVERAGE 2.29; OATS NO. 2 RANGE 1.50-2.10, FEW REPORTED 2.25, AVERAGE 1.87; SOYBEANS NO. 1 RANGE 6.29-6.55, AVERAGE 6.42.

**CENTRAL PENNSYLVANIA**  
 CORN NO. 2-Y RANGE 2.95-3.15, FEW REPORTED 2.85, AVERAGE 3.02; WHEAT NO. 2 RANGE FEW REPORTED 3.00-3.20, AVERAGE 3.11; BARLEY NO. 3 RANGE FEW REPORTED 2.15-2.55, AVERAGE 2.39; OATS NO. 2 RANGE 1.50-1.85, FEW REPORTED 2.00, AVERAGE 1.71; SOYBEANS RANGE 6.42-6.60, FEW REPORTED 6.20, AVERAGE 6.48; AVERAGE MOISTURE NEW BAR CORN RANGE 68.00-85.00, AVERAGE 77.57.

**LEHIGH VALLEY AREA**  
 CORN NO. 2-Y RANGE 2.88-3.00, FEW REPORTED 2.80, AVERAGE 2.95; WHEAT NO. 2 RANGE 3.10-3.25, FEW REPORTED 3.38, AVERAGE 3.19; BARLEY NO. 3 2.25-2.50, AVERAGE 2.38; OATS NO. 2 RANGE FEW REPORTED 1.70-2.00, AVERAGE 1.81; SOYBEANS NO. 1 RANGE 6.50-6.70, AVERAGE 6.68; AVERAGE MOISTURE NEW BAR CORN RANGE 70.00-85.00, AVERAGE 77.20.

**MONTH AGO**  
 CORN NO. 2-Y 3.09; WHEAT NO. 2 3.29; BARLEY NO. 3 2.40; OATS NO. 2 1.75; SOYBEANS NO. 1 6.65; AVERAGE MOISTURE NEW BAR CORN 80.61.

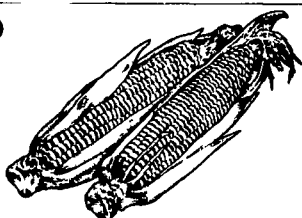
**YEAR AGO**  
 CORN NO. 2-Y 3.14; WHEAT NO. 2 4.14; BARLEY NO. 3 3.18; OATS NO. 2 2.24; SOYBEANS NO. 1 7.65; AVERAGE MOISTURE NEW BAR CORN 84.68.

**NORTH CENTRAL OHIO (Prices FOB Truck)**  
 CORN 2.88-2.69; WHEAT 3.10-3.17; SOYBEAN MEAL: BULK 44% 173.90-176.00, BULK 48% 185.90-190.00.

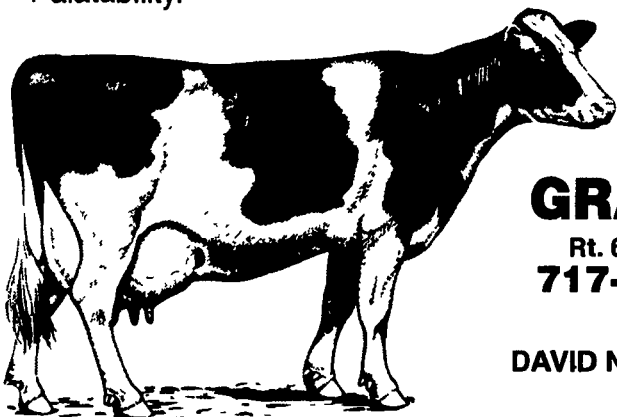
**MOLDY CORN?**

**Let Schnupp's Grain Roasting SAVE Your Moldy Corn!**

- Flame Roasting Kills the Molds Present in Corn.
- Flame Roasting Will Reduce Toxins to Safe Levels.
- Flame Roasting Will Remove Odor and Increase Palatability.



Those roasted grains are really tasty



**SCHNUPP'S GRAIN ROASTING**

Rt. 6 - Box 840, Lebanon, PA 17046  
**717-865-6611 Fax #865-7334**  
**800-452-4004**  
 DAVID N. GROFF, RD #3 Lewisburg, PA  
**717-568-1420**

**Fauquier Livestock Exchange, Inc.**

Marshall, Virginia

(540) 364-1566

Graded Feeder Cattle Sales

Tuesday . . . . March 10 . . . . 7:00 PM . . . . Calf & Yearling  
 Tuesday . . . . March 24 . . . . 10:00 AM . . . . Calf & Yearling  
 Thursday . . . . April 2 . . . . 7:00 PM . . . . Calf & Yearling  
 Tuesday . . . . April 14 . . . . 7:00 PM . . . . Calf & Yearling  
 Tuesday . . . . April 28 . . . . 10:00 AM . . . . Calf & Yearling  
 Tuesday . . . . May 12 . . . . 7:00 PM . . . . Calf & Yearling

**REGULAR SALES EVERY TUESDAY 1:30 PM**

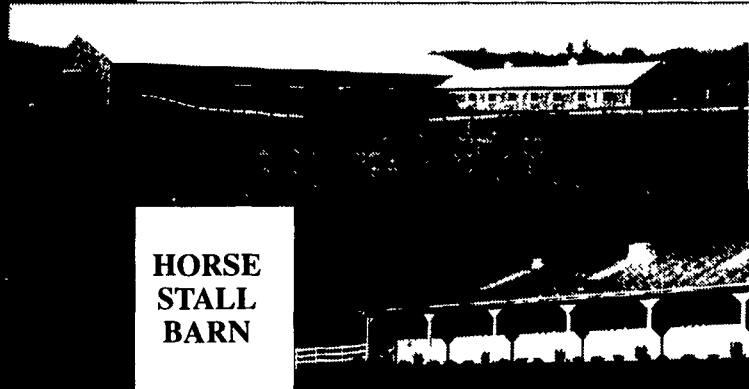
"Quality Feeder Cattle Our Specialty"

ORDER BUYING AVAILABLE

Contact: Grey H. Puckett, Jr., Manager - (540) 364-1566

**Planning to expand or update?**

Check with Agri-Inc. where quality is our standard.



RIDING ARENA AND HORSE STALL BARN

HORSE STALL BARN

**Site layout, building design & construction.**

- Dairy complexes and replacement stock facilities
- Horse stall barns and riding arenas
- Workshop and machinery storage buildings
- Timber column buildings for light commercial

**AGRI-INC.**

The Construction Professionals



Serving The Agriculture Industry For Over 29 Years

151 E. Farmersville Road, Ephrata, PA 17522 • (717) 354-4271

**GREENCASTLE LIVESTOCK MARKET, INC.**

Off Exit 3 of I-81  
 GREENCASTLE, PA. 17225

**SALES EVERY MONDAY at 2:00 P.M. THURSDAY at 1:00 P.M.**

**NEXT FEEDER CATTLE SALE**

Friday, March 6, 7:15 P.M.

**1000 Head**

**HAY & STRAW SALE BOTH DAYS at 11:30 A.M.**  
**FEEDER CATTLE SALE 1st Friday Night of Every Month at 7:15**  
**Poultry, Eggs, Rabbits & Produce Sale Every Wednesday at 6:30 P.M.**

Charles "Jim" Metz,  
 OFF. MGR.  
 Res. (301) 739-4470

Jeffrey S. Craig,  
 OWNER  
 Res. (717) 532-5224

OFFICE - 717-597-2171