

### Used Truck Bodies



Installed on NEW or Old Truck  
 "Makes your Old Truck Look Like NEW!"  
 • Dry Van Bodies 10' to 24' • Reefer Bodies  
 • Flat Bodies  
 (Completely Refurnished Bodies in Most Cases  
 - Same Day Service!)

**Phone 717-898-0683**  
**CHARTER ENTERPRISES, LTD.**  
 270 Hostetter Road, Manheim, Pa



1976 Chevy C60,  
 16' flatbed dump, 26,000 GVW,  
 Excellent Condition,  
**\$5,750.00 obo**  
**Call 610-965-5465**

### E-TOWN DODGE

'96 & '95 Tahoe very nice  
 '91 W-250 Cummins diesel, 4x4, nice  
 (40) '98 Club Cabs, gas & diesel  
 Full Size & Dakota  
 (2) Dual wheel 3500 diesel, quad cab pickups (in stock)  
 (10) 2500 & 3500 Diesel Quad Cabs in stock  
 (7) Durango's in stock  
**ASK FOR MILTON HESS**  
 Certified Truck Specialist  
**717-367-6644**  
**717-653-6667**  
 Elizabethtown, PA

# Sheets

## TRUCK CENTER, INC.

Hanover, PA  
 Route 94 - 5 Mile  
 South Off Rt. 30 & 94  
 Intersection  
 717-637-2108  
 PA Toll Free  
 1-800-762-1503

York, PA  
 (Route 462)  
 2818 W. Market St.  
 717-792-2277  
 PA Toll Free  
 1-800-475-3900



1984 FORD L9000 SINGLE AXLE, 28,000 GVW, 6V92 Det. Eng., 9 Speed, Power Steering, Air Ride Susps., Recently Overhauled Nov. '97.  
**\$6,995**

# ARMY TRUCK PARTS

CHAMBERSBURG, PA

COMPLETE TRUCK INVENTORY  
 COMPLETE PARTS INVENTORY  
 THE NATION'S LARGEST ARMY  
 TRUCK AND PARTS DEALER



6x6 TRUCKS  
 2 1/2 & 5 TON  
 UNITS AVAILABLE  
 ENGINES  
 TRANSMISSIONS  
 TRANSFER CASES  
 DRIVE TRAIN  
 CAB KITS

Army truck parts catalogs available

## MEMPHIS EQUIPMENT

821 Lincoln Way West  
 P.O. Box M  
 Chambersburg, PA 17201

**717/263-4194 FAX 717/263-4555**



GLENN ALLEMAN, GEN. MGR.  
 MARK SIPES, PARTS MGR.



### DUMP TRAILERS

Self-Contained  
 Removable Sides  
 Electric Brakes

The only 10,000 GVW trailer built on a  
 12,000 GVW chassis










Size	GVW	Price
6 x 10	10000 #	\$3400

Ringo Hill Farms Equipment Co., Inc.  
 1624 Route 212, Quakertown, PA 18951  
 Phone (610) 346-7340 Fax (610) 346-8041

Visit our web page:  
<http://www.quickpage.com/Rringofarm>

### Warehouse Direct To Your Door!

Free UPS  
 Over \$35

<b>Trailer Hitches</b> 	<b>Brake Controls</b> 	<b>Fold-down Gooseneck</b> 	<b>Convert - a - Ball</b> 
<b>Ball Mounts</b> 	<b>"PLUG-IN" Simple Wiring Hook</b> 	<b>Pintle Hooks</b> 	<b>Elec. Plugs &amp; Adapters</b> 
\$12.95	\$59.95	\$89.95	\$31.95

**WEAVER DISTRIBUTING 1-800-WEAVER-D** Free Catalog  
 RR2 Fredericksburg, PA 17026 1-800-932-8373



(25) CUMMINS ENGINES IN STOCK From 180 to 400 Horsepower Starting at \$750 Call Us With Your Needs



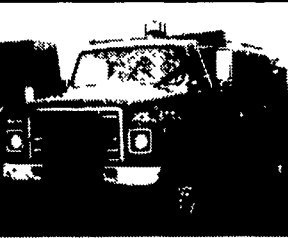
1987 GMC 7000 w/22 Flat Bed, 3208 CAT, 6 Speed, 4 88 Rear, 24 5 Radials on Budds, 30,000 GVW, Nice Truck \$8,900



(3) TRAILMOBILE VAN TRAILERS 1984's-1986's 48' Long, 13'6" High, 96" Wide Sliding Tandems, Swing Doors, 1984's \$3,500 ea. 1986's \$4,500 ea.



1988 PETERBILT 362 Double Bunk TT, 3406B Cat 400 HP w/Jake, RTO 14613, DS381 Rears, 24 5 Low Pros, PS, Nice Unit \$8,900



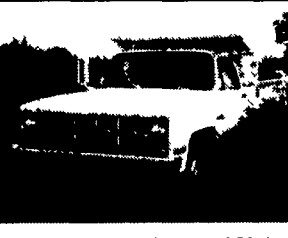
1979 INTERNATIONAL Model 1824 4x4 Dump w/Plow & Spreader, 446 Gas, 5 Speed, 10 00R 20 Rubber on Spokes, Low Mileage Great Buy At \$8,900



1988 FREIGHTLINER TT, Day Cab, 315 Cummins, 15 Speed, SQ100 Rockwells on Air Ride, PS, 24 5 Radials On Aluminum Budds \$12,900



1985 GMC Sierra, w/ 9' Dump Body, 427 V8, Automatic, 10.00 x 20 Rubber on Spokes, 30,000 GVW, Good Value \$6,900



1982 GMC 3500 Dumps, 350 Gas, 4 Speed, Dual Rear Wheels, 10,000 GVW, New Paint \$5,900



1989 PETERBILT 378 TT, 350 CATS w/Jakes, RT14609, DS402 Rears on Pete Air Ride, New 24 5 Rubber, 36" Bunks, Sharp Units starting at \$17,900



1,000 TRUCK DIFFERENTIAL CARRIER ASSEMBLIES, Rockwell, Eaton, Spicer, International, Mack, GM. Call Us For Your Needs



1986 Ford E350, w/ 14' Van Body, 7 3 Diesel, Automatic, 16' Dual Tires, 11,000 GVW, Clean Unit \$6,900



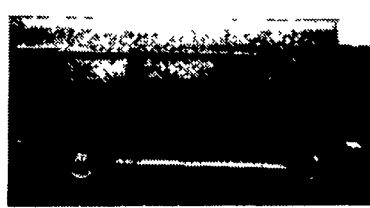
1985 Mack R688T Car Hauling TT, Sleeper, E6-350 Mack, 10 Speed, Straight Rear w/ Air Bag Tag, Air Ride, 22 5 Budds, Alum Fronts, Good Buy \$8,900



Clubwagon Country!  
 (4) 96, (1) 95, (2) 94, (1) 93  
 Ford E150 XLT/Chateau, 7/8 Pass., 300/302/351, Loaded, Good Miles, Call For Details



1996 Chevy Express LS 1500, 8 Pass., 350 AT/OD, Dual Air & Heat, PW, PL, Tilt, Cruise, Pri. Glass, Cassette & CD, Towing Pkg., 35K Miles, Also '97 Available



1995 Ford E350 XLT 12 Pass, 351, AT/OD, Dual Air/Heat, PL, PW, Tilt, Cruise, Pri Glass, 44 K mi.



1997 Ford E350 XLT, 12 Pass, 5.4 Triton V8, AT/OD Dual A/C & Heat, Privacy Glass, PW, PL, Tilt, Cruise, 4 to 35K Mi, (3) Available



1996 Ford E350 XLT, 15 Pass, 351 AT/OD, Dual Air/Heat, PW, PL, Tilt, Cruise, Pri Glass, 22-47K Mi, (3) Available



1997 E150 Club Wagon XLT, 8 Pass, 5 4 V8, Auto, PS, PB, Dual Air, Dual Heat, PW, PL, Tilt, Cruise, Privacy Glass, 7,000 Mi #2586

## FIRESTONE MOTORS, INC.

330 S. THIRD ST. • LEMOYNE, PA 17043 • (717) 763-7721 • TOLL FREE 1-888-668-6778

## Four Way Auto Sales

New Holland, PA

Specializing In Vans

Toll Free 1-888-847-8029 or 717-354-3199