

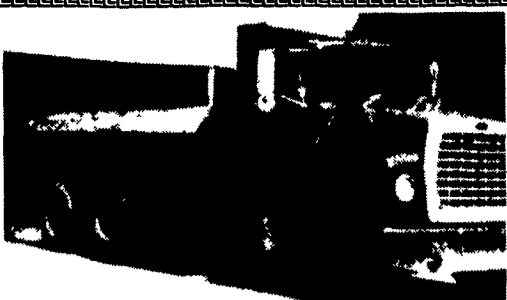


**1977 Ford V8**

5 Spd., 21' Body w/Liftgate and Tico Hyd. boom, 37,000 Miles  
6940 lbs. @ 6'9"  
2475 lbs. @ 17'3"

**\$6,500**

**Brewer Equipment Co.**  
Orangeville, PA 17859  
(717) 683-5411



**'82 FORD**

LN9000 with 16 Ft. Dump Bed & Air Lift Tag Axle Set Up With Pintle Hook and Air & Electric 10 Speed, Rr, 238 Detroit, Completely Rebuilt with Papers, 6 New tires, Dump Lift, Cylinder Rebuilt, Runs Excellent, Asking \$7800 OBO

**717-362-3773 Evenings**

Hart 2 horse slant GN 1996 aluminum, rear tack, 7' LS, 5' SS, DR, \$10,200 FIRM. (814)322-1575

Hillsboro gooseneck trailer, 24,000# GVW, twin Bogi 8-wheel electric brakes, 9x14.5, 12-ply tires, fold down cattle sides, loading ramp, roll tarp, Binkley 5th wheel hitch, D.O.T. approved. 610-678-2103

**MACK PARTS FOR SALE:** Engines, blocks, heads & cranks, cabs, hoods & doors, trans, rears, ALL MACK PARTS REASONABLE PRICES MACK TRUCKS BOUGHT (complete or parts) 888-625-6485.

Mack MS250 1987 GVW 32,000, 6-cyl turbo diesel, full air-brakes, 24' Grove rollback, 72,000 original miles. Call 410-877-9889.

Trailer- 10,000 GVWR, electric brakes, just inspected, very nice, \$1800; small 8x12 flatbed trailer, tandem wheels, \$400. 717/445-4890.

Truck bed: heavy duty Baker contractors/mechanics workbox for medium series trucks (9'L, 7 1/2' W), floors nice in all cabinets, all doors shut and lock. \$790/obo. (717)299-2112

Truck body, wooden, 22' long 8' rack over cab, 4' removable sides, shed kept, excellent condition, \$500. Delivery available. 410-357-4073 after 7pm

Utility bed, 11', white, ex. cond., fits dual wheel truck, enclosed, \$1100/obo (717)456-7666

Utility trailers: 5'x10', \$695; 6.5'x12', 3,000#, \$795; 6.5'x12', 7,000#, \$1,295. Landscape gates available. (717)336-0896.



**'97 Dodge 1-ton dually 4x4,**  
ext cab, SLT Laramie

Black, Cummins diesel, new tires, loaded, gooseneck hitch, trailer towing package, 36,000 miles, 5-spd, 25,000 lb combination license; also 25' gooseneck trailer, '96 model

**\$32,500 - will separate**

**717-336-7375 No Sunday Calls**

**CHEVROLET GEO BUICK Oldsmobile PONTIAC CHEVY TRUCKS**  
**OUTTEN**  
TOTAL TRANSPORTATION CENTER



**93 GMC 1500 SLE**  
4x4, Ext., Cab, AT, A/C  
**\$17,995**



**95 Dodge Ram 1500**  
4x4, V8, AT, A/C, Well Equipped  
34,000 Miles  
**\$17,995**



**94 Chev C2500**  
V8, AT, A/C, Well Equipped,  
Matching Fiberglass Cap.,  
11,000 Miles  
**\$13,995**



**95 Chevy Tahoe LS 4x4**  
2 Dr., V8, AT, A/C, Well Equipped  
25,000 Miles  
**\$22,995**



**95 Ford Bronco Eddie Bauer**  
4x4, 351 V8, AT, A/C, Well Equipped, 42,000 Miles  
**\$19,495**



**93 Chev C1500**  
350 V8, AT, PS, PB,  
only 15,000 Miles  
**\$13,495**

**Outten Hamburg Rt. 61, Hamburg PA**  
1-800-451-2333 • 610-562-2216



**1984 FORD**

Remanufactured 3208 CAT, 5+2, 26' Body, 5 Side Doors, Nice Condition  
**\$8,500**

**BREWER EQUIPMENT CO.**  
Orangeville, PA 17859  
(717) 683-5411



**96 DODGE RAM 3500 CLUB CAB DUALY 4X4** Cummins Turbo Diesel, Laramie SLT, AT, A/C, PW, PL, C.T, CD Player, 32,000 Miles, Dk. Green/Pewter #D235



**90 DODGE RAM 3500 DUALY** Cummins Turbo Diesel, AT, A/C, PW, PL, C, T, LE Package, Hi-miles but looks & runs good, Charcoal/Silver



**95 DODGE RAM 3500 4X4 CONTRACTOR DUMP** w/Plow, Cummins Turbo Diesel, 5-Spd., A/C, 25,000 Miles #D229



**88 CHEV. K1500 SUBURBAN** 4x4, 6.2 Diesel, AT-OD, Dual A/C, Silverado Pkg., 3 Seats, 92,000 Miles, VERY CLEAN. (RARE) Brown/Tan #C456



**95 CHEV K3500 CREW CAB DUALY 4x4** 6.5 Turbo Diesel, Silverado Pkg., AT, A/C, Power Seat, Most Options, 78,000 Miles, Bright Red #C464



**87 FORD F250 H.D. 4X4** XL Trm, 351V8, AT, A/C, 70,000 Miles, 8600 GVW, Dk. Blue  
**Special \$8,995**



Preferred Warranties Available on Most Trucks

**Bobby Gerhart's**

**Truck World**

Mon. - Fri. 9-8, Sat. 9-3

2400  
E. Cumberland St.  
Rt. 422  
Lebanon, PA  
17042  
717-273-7995



**97 FORD F350 CREW CAB 4x4**, Power Stroke, Diesel, AT, AC, XLT Pkg, Alum Wheels, PW, PL, C.T. Only 18,000 Miles, Black #F714



**94 DODGE RAM 2500 4x4**, Cummins Turbo Diesel, AT, A/C, PW, PL, C, T, Running Boards, Bedliner, 72,000 miles, 410 LS Rear, Dk. Green #D230



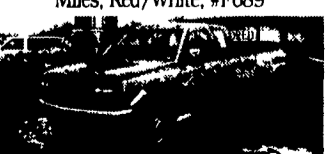
**94 FORD F250 H.D. XLT 4X4** Turbo Diesel, 5-Spd., 8600 GVW, A/C, PW, PL and Much More, 73,000 Miles, Grey/Blue #F712



**94 CHEV FULL SIZE BLAZER 4X4** 6.5 Turbo Diesel, Silverado Pkg., AT, A/C, PW & More, 83,000 Miles, White w/Gold Trm #C459



**90 FORD F350 CREW CAB 4X4** 7.3 Diesel, XLT, AT, AC, PW, PL, 102,000 Miles, Red/White, #F689



**93 CHEV. K3500 EXT. CAB DUALY 4X4** 6.5 Turbo Diesel Silverado Pkg AT, A/C, PW, PL, C T 60,000 Miles, 2-Tone Teal/Silver, #C454



**95 FORD F250 SUPER CAB 4X4** Power Stroke Diesel, XLT Pkg., AT, A/C, PW, and much More, 30,000 Miles, Maroon/Silver, #F713



**96 FORD F250 SUPER CAB 4x4** Power Stroke Diesel, XL Trm AT, A/C, 26,000 Miles, Dk Metallic Green #F702



**97 DODGE RAM 3500 CLUB CAB DUALY 4X4** Cummins Turbo Diesel, AT, AC, PW, PL, SLT Pkg., 410 LS, 1,000 Miles, Black/Pewter, Full Fact Warranty, #D226



**95 GMC 1500 SUBURBAN 4x4** 6.5 Turbo Diesel, SLE Pkg., AT, A/C, PW, PL, C.T, CD Player, Barn Doors, 48,000 Miles, Black #G187



**94 FORD F350 4X4 CONTRACTOR DUMP** 460 V8, AT, XL Trim, 63,000 Miles #F711



**95 FORD F350 CREW CAB DUALY 4x4** Power Stroke Diesel, Centurian Pkg., AT, A/C, PW, PL, C, T, TV-VCR, Alum Wheels, Power Seat, Red, 58,000 Miles, #F698



**95 DODGE RAM 2500 4X4** Cummins Turbo Diesel, 5-Spd., Laramie SLT Pkg., A/C, PW and Much More, 52,000 Miles, Dk Blue #D233



**96 FORD F250 SUPERCAB 4X4** Power Stroke Diesel, 5-Spd., A/C, XLT Trm, PW, PL, C, T, and Much More 18,000 Miles Electric Red, #F700



**94 FORD F250 W/ READING UTILITY** CAP 7.3 Diesel, AT, A/C, PS, PB, White, 80,000 Miles #F709



**95 FORD F450 SUPER DUTY** 9ft Walk-in Utility Body, 460 V8, AT, PS, PB, A/C, 14,500 GVW, 42,000 Miles, White w/Grey IntL, Cabinets & Racks, #F710