

AM GENERAL 6x6



In-Line 6-Cylinder Cummins, with Turbo. 5 Speed with Hi and Lo Transfer case. 900/20, Tires. Air Brakes. Locking differentials. Cargo body. A must for every farmer or off road work. Some with new engines and transmissions.

Priced from \$2,900 to \$10,500.

All Road Ready EXCELLENT CONDITION.

Call St. Marys, PA.
(814) 834-1018

Cat 3116 engine; Cat 3306T engine. Best offer. 717/445-6156.

Chevrolet 1983 16' walk in work van, aluminum body, dual wheels, new 350 gas, V-8 engine, four speed, excellent condition. \$4,995. (717)637-1929

Chevy 74 heavy duty pick up w/steel flatbed and custom sides, 350CI, AT, good inspection, well maintained, service records avail., workhorse and dependable. \$1650/obo. (717)299-2112

Dump truck, 1978 White, 50,000 GVW, aluminum bed, inspected, \$12,900. (717)369-2540.

FOR SALE: 1991 Chevy crew cab truck, heavy duty type, good condition, with contractors cap. Call after 6pm, (717)866-2353.

Front & rear rears, SSHD's, 6:17 ratio, very good. 717/243-6657.

ALUM-LINE, INC.

The Leader In Heavy Duty Construction

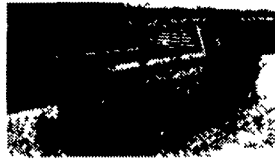
"More Trailer - Less Money"



All-Aluminum Livestock Trailers, Bumpers & Goosenecks • 8' to 39' Lengths • Double Deck Package Available

"The Finest Truck Bed You'll Own"

All-Aluminum Stake Body Beds • 6' To 24' Lengths • Many Standard & Optional Features • All Types of Tool Boxes



Also from Alum - Line, a complete line of aluminum pickup boxes and truck tool boxes

Wolfe Auction
9801 Hansonville Rd.
Frederick, MD 21702
800-443-9580

Goose Neck Trailers



Size	GVW	Price
8x20	12,000	\$4,280
8x24	14,000	\$5,000

Standard Features:

- Electric Brakes
- I-Beam Construction
- Pine or Oak Floor
- E-235x85x16 Radial Tires
- Drop Leg Jack
- Convertible Dove Tail
- Flip Up Ramps
- Stake Pockets & Rub Rail

Ringo Hill Farms Equipment Co., Inc.

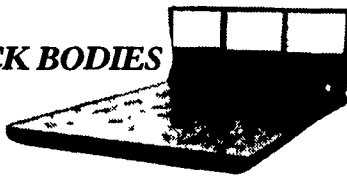
1624 Rt. 212, Quakertown, Pa. 18951

(610) 346-7340

Visit our web page @ <http://www.quikpage.com/R/ringofarm>

RINGO TRUCK BODIES

Headboard (Square or Tapered)
Stake Pockets, Rubrail Smooth Steel Plate
or 2' Wood Floor Heavy Duty Construction
OPTIONS Diamond Plate Floor \$10 per linear Ft



Length	Width	Frame Width	Price
7 FT	66"	38" or 40"	\$595
7 FT	80"	34,38 or 40"	\$600
8 1/2 FT	80" or 90"	34" or 38"	\$600
8 1/2 FT	94" or 96"	34" or 38"	\$700
10 FT	90"	34" or 38"	\$750
10 FT	94" or 96"	34" or 38"	\$820
12 FT	90"	34" or 38"	\$1100
12 FT	94" or 96"	34" or 38"	\$1150
14 FT	94" or 96"	34" or 38"	\$1350

ASK US ABOUT SPECIALS UP TO 24 FT. LONG

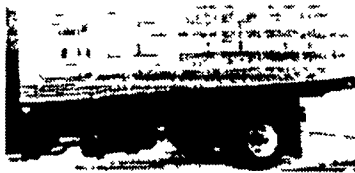
Accessories:
Solid Steel Sides
Steel Slat Sides
Plastic Slat Sides



Gooseneck Ball Hitches & Sub Frames



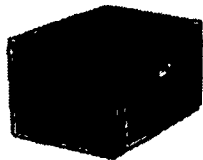
Trailer Hitches & Accessories



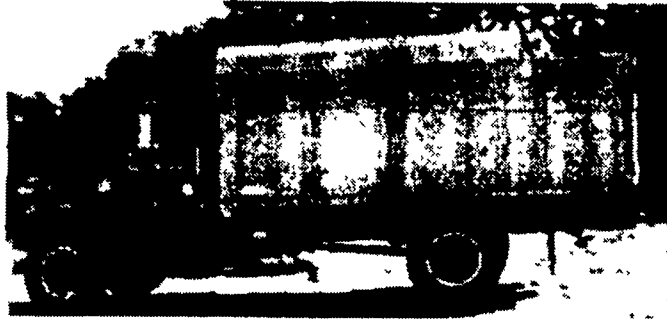
Drop Hinge Scissor Hoists Systems



Underbed Tool Boxes Installation Available



Commercial Truck Bodies

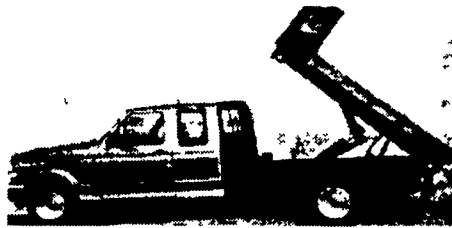


Sizes - 10-18 FT.

Types - Grain bodies
Trash bodies
Chipper bodies

Call with your needs
Cab & Chassis also available

DUMPING TRUCK BODIES



LENGTH	WIDTH	PRICE
8 1/2'	80/90"	\$2,575.00
9 1/2'	90"	\$2,990.00
12'	90"	\$3,500.00

Includes Flat Bed With Headboard Scissor Hoist, Sub Frame, Electric Hydraulic Pump & Cab Printed Controls. Easy to Install, simply Bolt sub frame to your truck. Installation Available.

Ringo Hill Farms Equipment Co., Inc.

1624 Rt. 212, Quakertown, PA. 18951

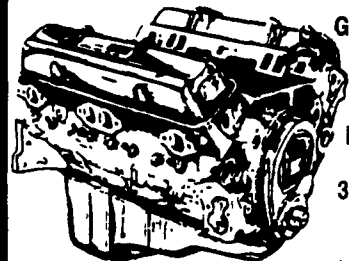
Phone (610) 346-7340 Fax (610) 346-8041

Call For a FREE Catalog or for a Dealer Close to You

Visit our web page @ <http://www.quikpage.com/R/ringofarm>

JONES

Goodwrench ENGINE HEADQUARTERS



GM GOODWRENCH
350 V8 1973-85
Part Number
10067353
New Engine - Not Rebuilt
36 Month or 50,000 Mile Warranty

New Engine - No Core Fee \$1199⁰⁰

WE'LL MATCH ANY COMPETITOR'S PRICE!

6.5L GOODWRENCH DIESELS From \$3,175

Call 394-0711 for prices on other New or Remanufactured Goodwrench Engines. 2.5 Liter thru 454 cid. Gas and Diesel

Chevrolet - Pontiac - Olds - Buick - Cadillac - GMC

JONES GM PARTS CENTER

1335 Manheim Pike, Lancaster, PA 17604
Easily Located on Rt. 72 Just off of Rts. 283 & 30
Hours: Mon-Fri 7:30 a.m. - 9 p.m. Sat 7:30-3
(717) 394-0711



Largest Stocking & Selling Extended Cab GMC Dealer in 7 States

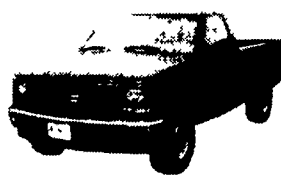
JONES BEST BUY 4X4'S TRUCKS

PONTIAC • HONDA GMC TRUCK 1335 Manheim Pike, Lancaster

Prices based on straight sale, Tax & Tags extra. Trades accepted at actual cash value. Must present this ad at time of purchase for sale price



'94 TOYOTA 4x4
5spd, 4cyl, 43K Miles
#7748 Was \$13,900
SALE \$10,880



'95 GMC K15 4x4
AT, AC, Vortec 4300, Clean
#7705 Was \$16,800
SALE \$13,900



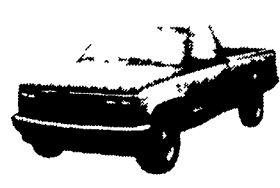
'97 GMC 14' CUBE VAN
AT, AC, V8, 22K #7669
ONLY \$18,999



'93 GMC C3500 X Cab, 6.5 Turbo
AT, AC, SLE, 38K Miles
#7772 Was \$18,900
ONLY \$16,850



'94 FORD F150 4x4 XLT, AT, AC, V8, 34K Miles
#7771 Was \$17,800
SALE \$15,500



'88 CHEV K15 4x4
350 Silverado, AC, 5-Spd., 90K #7738
ONLY \$6,900



'96 PLYMOUTH VOYAGER
AT, AC, V6, 7 Pass
#7733 Was \$16,800
SALE \$13,700



'97 GMC YUKON 4x4
SLE, AT, AC, 350, 18,000 Miles #7735 Was \$30,700
SALE \$27,900



'91 CHEV ASTRO AWD, AT, AC, V6, SLT
#7768 Was \$8,900
SALE \$6,450



'97 GMC K15 4x4
V8, AT, AC, 6' Bed, 7K Miles
#7764 Was \$20,750
SALE \$19,100

JONES

717-394-0711