

**15 FEED & SEED**

**ATTENTION FARMERS**

*Paper Bedding More Absorbant than Straw. Less Flies.*

\$65/ ton FOB

Prices Subject to Change Without Notice

**STOLTZFUS ENTERPRISES**

Box 704, RD 1, Honey Brook, PA 19344  
or call answering service 610/273-9266 7-8 am M-F  
or contact our sales rep.  
**Irvin Martin 717/768-3076**  
or your nearest dealer

**James Kreider**  
Quarryville  
717/786-3936

**Paul Armstrong**  
Port Royal  
717/527-4554

**David Rohrer**  
Mt. Pleasant Mills  
717/539-8508  
(Snyder Co.)

**FOR SALE**

**SAWDUST**

- Quality Mulch •
  - Two Grades Available •
  - Fresh Shredded Wood •
- We Deliver**

**WANTED**

*Standing Saw Timber,  
5 Acres or More*

**TUSCARORA HARDWOOD, Inc.**

Manufacturer of Hardwood Lumber  
P.O. Box 64, Route 274  
Ellittsburg, PA 17024

**800/253-0263 or 717/582-4122**

**GOOD'S AG SERVICE**

**Liquid Fertilizer Sales & Application**

9-18-9	6-24-6	30% N
5-15-15	10-34-0	12-0-0-26s
3-18-18	7-21-7	Liquid Calcium

For more information call:

**DALE GOOD - 717-949-2371**  
ASK ABOUT EARLY DISCOUNTS

**Sweet 'n (K) with Sulfur  
PARA-AG**

14014 Paradise Ch. Rd.  
Hagerstown, MD 21742

Info. Phone: 301-745-1473 or  
301-797-3483

**Min. Analysis**

40% Cal. Ox.	200 Mesh 98% Dry
1.5% Mg. Ox.	100 Mesh 99% Dry
2.5% K <sub>2</sub> O (Potash)	60 Mesh 99% Dry
3% SO <sub>2</sub> (Sulfur)	20 Mesh 99% Dry
72% CEC	Reg. MD, PA

Application: Damp

Farmers: Direct Field Delivery  
Dealers Wanted: Handle, Apply and  
Stock Pile

Correct your P.H. and add 2 valuable  
nutrients in same product

**F.O.B. Hagerstown, MD**  
Call For Pricing

**17 PLANTS**

Rooted Cuttings: Vinca  
Vine, Yellow Strawflower,  
Blue Scaveola, Blue  
Torenia, New Guinea Im-  
patiens. (518)673-8223

Taking orders for 609 and  
41 greenhouse tobacco  
plants. 717-786-2493

We are taking orders for  
cabbage, broccoli, caulif-  
lower plants for spring  
planting. Christian K. Esh,  
2008 Horseshoe RD., Lan-  
caster, PA 17602  
717-299-3721

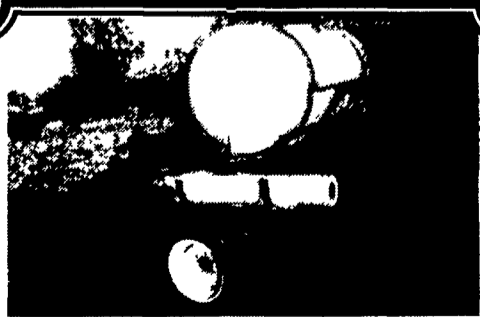
**18 FRUITS & VEGETABLES**

Bryon 103 sweet corn  
harvester, like new, asking  
\$7500. Central PA  
717/433-3580.

Strawberry Plants- Earli  
Glow, Delmarvel, Honey  
Oye, Raritans, All Starts,  
Sparkies, Late Glow, Wi-  
nonnas. 1000 plants per  
case, \$93.00; Mixed var-  
ties to a case, \$120. Add  
12% to total cost to get  
shipping cost. PA residents  
add 6% sales tax unless  
tax no. is included. Closed  
Sundays. Long Lane  
Greenhouse, Reuben B.  
Fisher, 1977-A Mine Road,  
Paradise, PA 17562. 6  
miles south of Strasburg to  
Georgetown. Get Mine Rd.  
1 mile north on Mine Road

600 treated cyprus tomato  
stakes 4", .15cents each;  
Challenger #1800 plastic  
mulch lifter, \$900; water  
wheel transplanter \$1,000;  
Planting wheels \$50; 8' en-  
closed shelved plant trailer  
\$200.; Snyder County,  
717-539-2272. No Sunday  
Calls.

Complete tomato grader  
5'x4' components, Haines  
water flume, grading tables  
& sizing units, Lobee brush  
waxer, tri-pack dryer, as-  
sorted conveyors, 9 auto-  
matic tri-pack box fillers  
w/75' power rollers and  
automatic traffic cops.  
Complete price \$30,000.  
Call for detailed informa-  
tion. 717-587-1725



**PLASTIC LAYER &  
TRANSPLANTER  
COMBINATION**

Save You Lots of Time & Money.  
For more information write or call  
Eve. 7:00 to 8:00 — 717-626-5809

**KINGSWAY MFG.**  
192 W. Millport Rd., Lititz, PA 17543

**18 FRUITS & VEGETABLES**

E-ZY Grower green-  
houses, in stock, 21x48'  
\$880; 21x96' \$1,660;  
24x96' \$1,886. Tufflite  
greenhouse plastic, Mod-  
ine gas heaters, potting  
soil, flats, inserts, plastic  
mulch and drip irrigation  
supplies. Write or call for  
FREE catalog. Martin's  
Produce Supplies, 625 Brit-  
tan Rd., Shippensburg,  
PA, 17257 (717)532-5918.

**19 NURSERY**

15' #1 railroad ties, very  
nice. (717)653-4923

8-10' Nigra Arbovitae, 3'-4'  
Globe Arbovitae, yews,  
juniper- you dig! Cheap!  
(717)244-1756.

'97 commercial Bunton  
lawn mower, 61" deck, 25  
hp Kohler engine, hydro-  
static driven, 1 season op-  
eration, VG condition.  
(717)483-6882.

Bark mulch and mushroom  
soil, trailer loads and  
smaller loads also avail-  
able. Garman's Coal and  
Mulch Products,  
(717)653-9580.

Black Walnut tree stand-  
ing, 57" round, 13' main  
trunk, no iron.  
(717)868-6147

Clearing NURSERY  
STOCK, row run prices,  
Hemlocks, Arbs, yews etc  
Call for prices.  
(410)398-3082.

Easy-Lawn 600 gallon  
hydro-seeder, 1997,  
\$8,500; Harley power rake,  
6' 1996, \$4,400; NH555  
skid steer loader, 1993  
1200hrs., \$10,900; Bobcat  
943 1,150hrs., 1989,  
\$17,500 obo.  
(717)456-7410

EVERGREEN  
SEEDLINGS &  
TRANSPLANTS.  
Spruce, Pine, Fir for Christ-  
mas trees & nursery stock.  
Write or call for price list.  
Crosshaw Nursery, P.O.  
Box 339, Columbus, NJ.  
08022. or call  
609-298-0477

Japanese Maples, Blood-  
good, 8-12", \$3.00; Garnet  
& Red Select, 12-15",  
\$4.00; 15-18", \$5.00. Lar-  
ger sizes available. Cavag-  
naro Nursey, 154 Fairview  
Drive, Neshanic, NJ.  
08853. (908)369-5899

LANDYSHADE MULCH  
P R O D U C T S  
717-898-7689. Mushroom  
Mulch 100bu, \$70; 500bu,  
\$170, 1200bu \$198. Mulch  
delivered FREE within 25  
miles of Lancaster. We  
carry Bark Mulch, Topsoil

MUSHROOM SOIL AND  
BARK MULCH. We deliver.  
Akron Nursery Inc., PA  
(717) 859-1101  
(800)485-7525

TC-120 ULTRA ALUMI-  
NUM pickup dumpers,  
w/ad \$2995. TRUCK-  
CRAFT ORWIGSBURG.  
717/366-0790.

Trailer, 2-axle, 24' deck, 5'  
Beaver tail, 12,000# ca-  
pacity, needs no decking,  
\$2000 firm. 609-894-2849

Tree Spades, 20" to 60";  
Tree Planters, 3" shoe to  
24" shoe; Tree Boss, one-  
man tree loading system.  
TREE EQUIPMENT DE-  
SIGN INC. RD 1, Box 104,  
New Ringgold, PA 17960  
717/386-3515.

Tree Spade Vermeer  
TS60S on 73 GMC 7500  
series V6, \$25,000.  
717/225-1694 after  
5:30pm.

Want to buy Christmas tree  
farm or Douglas & Frazer  
Fir on the stump. Please  
call 814/692-4110.

**GROFF  
TREE MOVING SERVICE**  
Contract Digging  
24" to 84" Ball (B&B)  
Any Amount - Anywhere  
-Buy/Sell Wholesale -  
Call Don 717-664-4587

Container & B&B Nursery  
Stock, Wide Selection  
For free price list  
**Stoudt Landscape  
& Nursery**  
RD 2, Box 1324  
Schuylkill Haven, PA 17972  
717/739-4650

**Quality  
Sheared  
Evergreens**  
White Pine,  
Blue Spruce,  
4-8' Hemlock  
B&B  
Spencer Tree  
Farm  
Luzerne Co  
717/864-3532

**Landyshade  
Mulch  
Products**  
Lancaster, PA  
17601  
717-898-7689  
**Railroad ties**  
#1 & #2  
We also sell  
mulch & topsoil

**FOR SALE**  
12' Lawn Roller  
(717) 748-1093

**NURSERY STOCK FOR SALE**  
Azaleas, Rhodos, Flowering Trees  
Junipers, Arbovitae  
Call For Price Lists  
**MASKELLS MILL NURSERIES**  
Salem, NJ  
(609) 935-4675 Fax (609) 935-6623

**TWIN BROOK TRANSPLANTS**  
Quality in product  
Integrity in business  
Many species of Firs, Spruces,  
Pines, and Hemlock shipped fresh  
to your doorstep  
Order Now for April Delivery  
**TWIN BROOK PLANTATIONS**  
Located in Northeastern PA  
**1-800-595-GROW • 717-256-3440 Fax**  
Choice evergreen planting stock for Christmas  
tree, landscape, and conservation planting.  
"We're working harder to serve you better"

**16 FERTILIZER**

Buying and  
Selling  
Broiler Manure  
Mushroom  
Mulch For Sale  
Penn Ag Products  
717/354-4174

**16 FERTILIZER**

**Shearer's  
Ag-Limestone**  
Damp Burnt Limestone  
**\$1.00/Ton**  
Product code KS 50.  
Pick up at Baker's, York Plant  
or can be delivered.  
(717) 792-3267

**CORN SILAGE**  
Approx. 400 Ton out of 16'x70' Silo  
Good Corn Content - You Haul It  
**Irwin H. Martin**  
717-949-6817 - Lebanon County, PA



**WANTED**  
Grass Hay  
for mulch  
Large or Small  
Square or Round  
Bales. New or Old  
in good condition.  
Picked up or be  
delivered.

For Sale-hay suitable for  
dry cows & heifers  
(610)444-1651

**WANTED**

**EARLY ORDER  
TWINE SPECIAL**  
 \$21.89  
SKID LOTS  
7200'-9000'  
Brazilain Top Knot  
Guaranteed 40 lb  
**EMHERR**  
Rt. 272 South  
14 Herrville Road  
Willow Street, PA 17584  
Ph. 717-464-3321 or  
Toll Free 800-732-0053

For All Your Non-Chemical  
Organic Fertilizer Needs  
• General Farm Crops  
• Gardens  
• Homeowners - lawns, etc.  
Soil test taken as needed.  
Also available for local farmers  
• Fertilizer bins  
• Spreaders for customers and non-customers  
• Mulch to meet all your needs -  
mushroom soil, bark mulch, screened top soil  
• Delivery service on all above.  
**Symo-Life, Inc./Erth-Rite**  
633 Quarry Rd., Gap, PA 17527  
717-442-4171  
Plant Mgr. Home Phone 717-354-0316  
Rt 10 North of Rt 30, Left on Quarry, 1/2 mi on right  
- Dealer inquiries welcome - available in some areas -