

# One, Two, Three – Go!



## ***With The New Case IH MX Series MAXXUM® Tractors!***

- 1...** *Rugged power and maneuverability to get the job done fast*
- 2...** *Improved hydraulic system with 47% more flow, redesigned PTO and heavier hitch capacity for more responsiveness in the field or the feedlot*
- 3...** *Up to 44% torque rise to tackle demanding applications*

*And, all-new styling that improves visibility and adds comfort in a newly designed, quieter cab to improve your productivity every day.*

We are committed to providing you with the best in farm machinery, professional product support and flexible Case Credit finance options. All this adds up to keeping you on the go, season after season for the kind of productivity and profitability you would expect!

**CASE CREDIT**

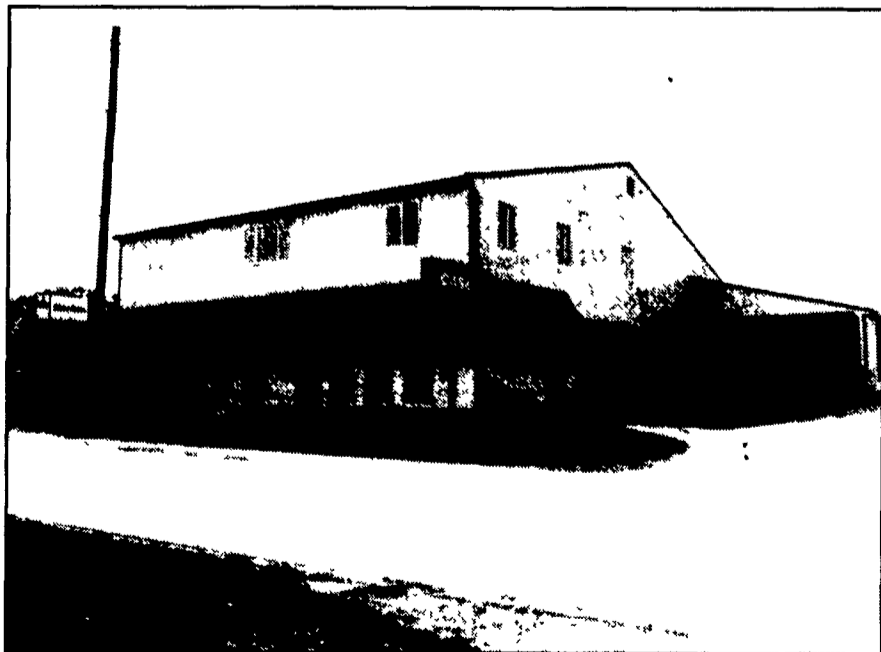
Bringing people and product together®

**PRODUCT SUPPORT**

COMMITTED TO EVERY PART™

## **SEE YOUR LOCAL CASE IH DEALER TODAY!**

A. L. Herr & Bro. Inc. is located in Quarryville, Pa. The dealership has just completed a major building project which has more than doubled the size of the original building. The new building boasts a larger parts department with more stock. A second story has been added for sales offices, a meeting room, bookkeeping department, and storage space. A new three bay Service Center offers superb working conditions for service technicians. With this new facility, Herr's have obtained greater efficiency and are better equipped to meet customer needs. A dedicated staff is ready to help you with your agriculture and utility equipment needs with new weekday hours from 7:00 A.M. to 5:00 P.M.



65 Years  
A Case IH Dealer

**A. L. HERR & BRO.**  
*Established 1890*

Park Ave., Quarryville, PA 17566  
(717) 786-3521  
We ship Parts U P S

© 1998 CASE CORPORATION

Visit us on the Internet at <http://www.casecorp.com>

Case IH and Case Credit are registered trademarks of Case Corporation.

**CASE IH**