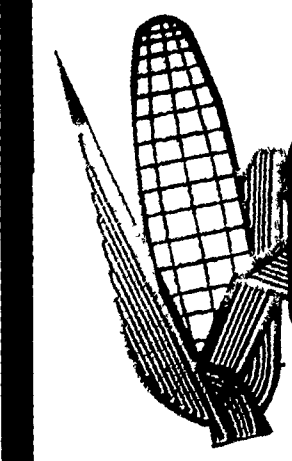


★ A LANCASTER FARMING EXCLUSIVE ★

The Official Publication For The PENNSYLVANIA MASTER CORN GROWERS ASSOC.



CORN TALK

PENNSYLVANIA MASTER CORN GROWERS ASSOC., INC.

Corn Talk, Lancaster Farming, Saturday, January 24, 1998

A
SPECIAL
SECTION
IN

LANCASTER
FARMING
MARCH

7

★
ADVERTISERS
PLAN NOW
TO RESERVE
YOUR SPACE

★
PHONE

717-626-1164

OR

717-394-3047

★
DEADLINE

FRIDAY

FEBRUARY 27

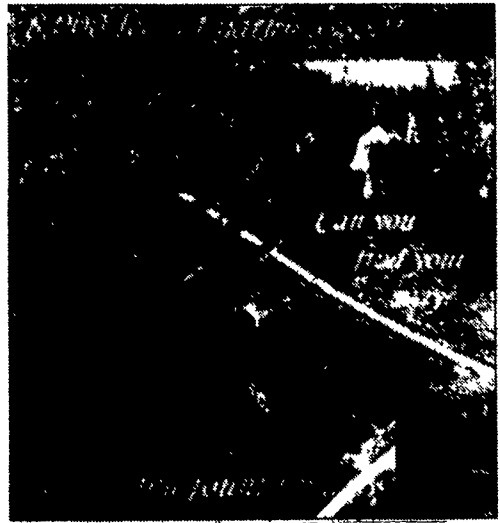
★

McPhersons Cultivate A-Maize-Ing Entertainment

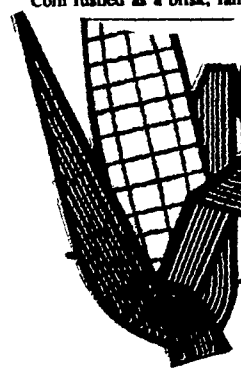
JOYCE BUYP
York Co. Correspondent
NEW PARK (York Co.) —
Don't cut through the corn.
Don't pull off any ears. No run-
ning. No cigarettes!
Got those rules? Then
you're ready to take on the
challenge of Maize Quest.
After an introductory initia-
tion to the fine art of safely ne-
gotiating their way through a
corn field, including a pointed
warning about how cigarettes
can start fires in a dry field,
several thousand people did
just that last fall at the McPherson
family's Maple Lawn
Farms, New Park. The south-
ern York County corn maze
was one of several such con-
sumer-entertainment out-
reaches that have been culti-
vated around the region in the
last few years.
Corn rustled as a brisk, fall

breeze stirred through the dry-
ing stand of upside-down ears
and drooping, brown stalks.
A cricket dashed across a
packed path, seeking a haven
from a pounding by passing
sneakers.
And a gleeful cluster of chat-
tering church-group members
gathered to add yet another
section to their map of the intri-
cate corn maze. If they could
complete the map, it would
show them the way out.
Maize Quest was truly a
family endeavor of the Paul
and Gail McPherson clan,
longtime advocates of educat-
ing the consuming public about
where food originates. From
their U-pick orchard to periodic
newsletters sent to a wide
mailing list of customers, the
McPherson's Maple Lawn fruit
and grain operation has always
been on the leading edge of

agriculture-education activism.
Sharing in the major plan-
ning and implementation of
Maize Quest, with its heavy
emphasis on information along
with entertainment, were sib-
lings Hugh and Gretchen Mc-
Pherson. Hugh, a recent Penn
State graduate with an ag busi-
ness degree, combined his
interest in undertaking a new
farm venture with the art de-
gree of his sister, Gretchen,
who lives in California.
Their brainstorming birthed
the Maize Quest idea months
before the first corn seed went
into the soil. Hugh had heard
about other mazes in the area
and saw it as an extension and
alternative use of the farm's
normal planting of a large acre-
age of grain corn. They envi-
sioned a corn maze that would
not only entertain visitors, but

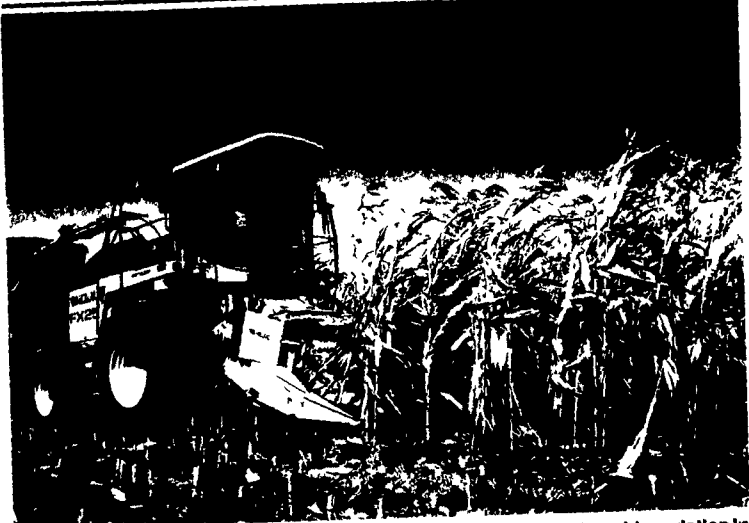


(Turn to Page 2)



CORN TALK

Corn Talk, Lancaster Farming, Saturday, October 11, 1997



Corn yields are becoming evident as harvest is in full swing with a wide variation in yields because of weather conditions. Clarence Hoover runs the silage harvester on the John S. Nolt farm north of New Holland.

New PMCGA President Wants Vote On Corn Checkoff

ANDY ANDREWS
Lancaster Farming Staff
SHELOCTA (Indiana Co.)
— Chris Kimmel is steadfast
about his plans.
The new president of the
Pennsylvania Master Corn
Growers Association
(PMCGA) intends, within the
next two years, to put a referen-
dum before the state corn
growers.
That referendum will
address the question: will Pen-
nsylvania have a corn
checkoff?
Already, the PMCGA knows
the direction it must take. At the
Crops Conference in Grantville
early this year, corn growers

discussed heavily in
crops, including about 800 in
corn. The passing of a checkoff,
calculated at point of sale and
based on a similar program in
Maryland, would mean a lot to
the commercial growers who
want to see better promotion of
the product, in addition to
money for research at land-
grant universities (Those same
universities are already experi-
encing the withdrawal of govern-
ment money — those dol-
lars have to come from
somewhere).
This is the first time Kimmel
has served as president of
PMCGA, although he has
served as vice president for a
few years. He serves on the
com...

- GROWERS INFORMATION
- FEATURE INTERVIEWS
- STATE & NATIONAL ASSOCIATES NEWS
- PRESIDENT'S NEWSLETTER