

35 TRUCKS & TRAILERS

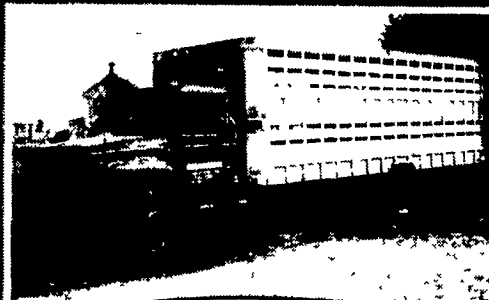
1990 Ford super duty cab and chassis, 460 gas engine, new clutch. Will accommodate 12' body.
\$7,000 OBO
(610)746-9150



— 1990 IH 4700 22 ft. C&C DT360 —
170HP Diesel, 5 Spd P/S, Under CDL, 120,000 Miles New Paint & Inspection - V. Clean
\$13,300

K.T. GRAHAM, INC.
(717) 859-3168

Price Reduced - \$14,900



1988 1754 International,
28,000 GVW, 5 spd + 2 spd Rear, 22' Eby Livestock Body with deck rail, Excellent Condition, Garage Kept "Will Separate Body"
717/597-2661

FOR SALE



**1995 FORD F350
12 FT. STAKE BODY**
Power Stroke Diesel, 5 Spd, A/C, 161" WB, 85" Cab to Axle, 11,000 GVW, 31,000 Miles
\$18,500

**SCHAEFFERSTOWN
AUTO & TRUCK SALES**

Rt 501, 1 1/2 miles South of Schaefferstown
717-949-2812

KEIM
YOUR CHEVY GEO FAMILY

(717) 768-8225
(800) 223-KEIM

RT. 30 Lincoln Highway East
Paradise, PA 17562

**YOUR TRUCK, VAN & 4x4
HEADQUARTERS**

1-800-223-KEIM



95 CHEVY SILVERADO 4X4
3/4 T Extended Cab, 4x4, Auto, A/C, 35,000 Miles



96 FORD CLUB WAGON
E350, 12 Passenger, 5.8 V8, Auto A/C, 42,000 Miles



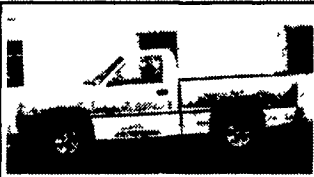
98 CHEVY DUMP TRUCK
3500 HD 4x4, 12,000 GVW



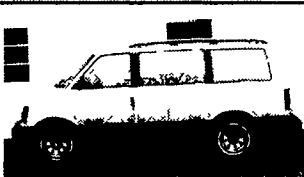
**97 CHEVY SILVERADO
K1500**
Ext Cab, 3rd Door, Z71 Suspension, Blue Green, Only 7,000 Miles



94 GMC SLE
Extended Cab, V8, 2WD, Auto, A/C



**97 DODGE LARAMIE SLT
4X4**
V8, Auto, A/C, PW, PL, Only 17,000 Mi



91 GMC SAFARI
AWD, Auto, A/C, 7 Passenger



**98 CHEVROLET G30
CARGO VAN**
Auto, A/C, Adrian Upfitters Custom

**LESHER Mack
SALES & SERVICE**

27th & Cumberland St. Lebanon, Pa
Route 422 West 17042



1995 MACK CH 613, E7-350, V-MAC, T2090 Trans, Ratio 3.86, AL40 Air Ride, 11R245 Tires on Alum Wheels



1993 CH 613, E7-350, RTX 14709H, Air-DS402-411R, Steel Disc, Hubplot, 192WB, 42 in Highrise, Tank Fairings, 500,000 miles Plenty to choose from



5/8 1994 CH 613 (Clean Trucks), Day Cabs, E7-300 (could be made 350) RTX 1709H, 9-Spd, 12 Ft. 38 Air Ride, Eaton Rears, 4 11 R, 151" WB, 22.5 Disc Wheels, PS, AC

717-273-4535

**PHONE
717-274-2000**

**Toll Free
1-800-650-1420**

**RTE. 422 WEST
LEBANON, PA**

(Across From Lebanon Valley Mall)

CAR VILLAGE

HEAVY DUTY TRUCKS

**Business Hours
Mon.-Fri. 9-9
Sat. 9-4**

THIS IS ONLY A PORTION OF OUR HUGE INVENTORY



\$18,900
92 FORD F250 4X4 HEAVY DUTY
3/4 Ton Diesel Power, AT, AC, Only 62,000 Miles, Very Nice Truck



93 4X4 DODGE CLUB CAB
LE Pkg., Cummins Turbo Diesel, Heavy Duty 3/4 Ton, Lock Out Hubs, Extra Clean, 53,000 Miles



DODGE TOW MACHINES



5 SPD. DUALY
97 DODGE 3500 SLT LARAMIE
Awesome Tow Machine, Cummins Turbo Diesel, 5 Spd., AC, Tilt, Cruise, Heavy Duty Frt & Rear Dana Axles, 4 10 Gear, New Truck Warranty



FARM FLATBEDS
'84 Ford F350, '85 Chevy C-30 Run Well, Call For Details \$4,000



MECHANIC'S SPECIAL
89 Ford F250, 4x4, V8, 5sp - \$3,500



Rack Body Dump 96 CHEVY HD 3500
Big 15,000 GVW, High Output 6.5 Turbo Diesel, 12ft Body, New TK Warranty, Only 14,500 Miles



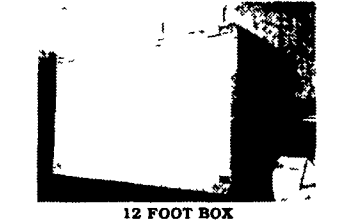
4 DOOR F250 4 WHEEL DRIVE
96 FORD HEAVY DUTY
Powerstroke Turbo Diesel, 5 Spd., AC, Tow Pkg., It's Perfect, Only 19,000 Miles



4x4 CLUB CAB DUALY
96 DODGE 3500 SLT LARAMIE
Cummins Turbo Diesel, AT, AC, 4-10 Limited Slip Axle, 30,800 Miles



CATTLE HAULER 91 FORD F350
7.3 Diesel, 5 spd., Eby Aluminum Body, Rear & Side Doors, Loading Ramp



12 FOOT BOX
Like New Reinforces Roof, Ladder Racks, Roll Up Rear Door, Extra Clean Inside & Out Brand New \$6,500 - Your Price \$3,500



6 WHEEL DRIVE
96 CHEVY SUPER CAB DUALY
Perfect, Only 6,500 Miles, High Output 6.5 Turbo Diesel, AT, A/C, 4.10 Gears, Loaded Silverado, Chrome Simulators, Lots Less \$\$\$ Than New.



4x4 DODGE CLUB CAB
96 DODGE 2500 SLT LARAMIE
A Nice One, Only 28,000 Miles, Cummins Turbo Diesel, AT, A/C, Limited Slip, 4.10 Gears, Chrome Wheels, Ready To Tow



QUAD CAB - 4 DOOR, 98 DODGE 3500 4X4
Almost New, Only 700 Miles, Cummins Turbo Diesel, 5 Spd., AC, 4-10 Limited Slip Axle, Great Tow Machine



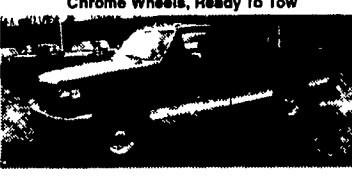
5 SPD. CUMMINS TURBO
96 DODGE 2500 4x4
5 Spd's Are Hard To Find, Don't Wait Strong & Fuel Efficient Diesel Power H.D., 5 Spd., Only 35,000 Miles



460 POWERHOUSE 92 FORD F250 SUPER CAB 4X4 Ready To Pull Those Heavy Loads, Fuel Inj V8, AT, A/C, Capt Chairs, It's All Muscle, 59,000 Miles \$16,900



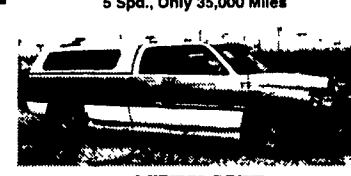
14 FT. BOX TR. 95 FORD E-350
A Must See If You're Looking For A Clean One This Is It. 56,000 Maintained Miles, V8, Auto, A/C, 14 Ft. Body - \$16,500



4X4 POWERSTROKES
HEAVY DUTY FORD F250'S
96 - AT, 12,000 K; 96 - 5 Spd., 21,000 K; 95 - 5 Spd., 49,000 K



4x4 SUPER CAB DIESEL, 94 GMC 8LE
Good Looking & Only 48,000 Miles, 6.5 Turbo Diesel, AT, A/C, Capt. Chairs, Console, Aluminum Wheels, Remaining Factory Warranty \$19,000



2 WHEEL DRIVE
96 DODGE 2500 LE CLUB CAB
Cummins Turbo Diesel, 5 Spd., AC, Fact Chrome Wheels, Tow Pkg., 30,000 Miles



4x4 UTILITY
94 FORD F250
V8, AC, 63,000 Miles, Enclosed Body



\$15,900
93 FORD F250 XL 4 WHEEL DRIVE
Very Affordable Heavy Duty, Diesel Power, AT, Vinyl Floor, Lock Out Hubs, 58,000 Miles



4X4 CREW CAB DUALY
88 CHEVY SILVERADO
It's A Beauty, Only 48,000 Original Miles, Fuel Inj 454, 4 Spd, Trans., AC, Class 3 Hitch, Chrome Simulators, Ready To Tow



Work Van.
95 FORD E250 Super Cargo Van
Nice & Clean, 47,000 Miles, Heavy-Duty 3/4 Ton V8, Auto, A/C, Rear Glass Only



5 SPD. CUMMINS
91 DODGE 250 LE
1 Owner Trade, 77,000 Original Miles, LE Pkg., AC, Excellent Body, Nice Driver



\$17,900
4X4 HEAVY DUTY 93 FORD F250
Diesel Power, 5 Spd, AC, Lock Out Hubs, Dual Tanks, Only 66,000 Miles, Real Clean