

Aluminum dump box, construction type, 18' floor needs work, no hoist, \$1800; 78 Chevy 2500 4WD, 350 4-spd, high miles, body poor, runs good, gooseneck hitch, \$2200. 717/463-3938 No Sunday calls.

Rogers 24', 50 ton detachable gooseneck trailer w/ wetline, pony motor. Tri-Brook 24' aluminum dump trailer. 1981 Ford F-350 utility body. 1979 tandem axle GMC general. (610)367-1630.

WANTED
1-Ton Rollback
Chevy or Ford
Alum. Body
Good Shape
& Good Price
Ask for Marty
or Dave
410-479-1477

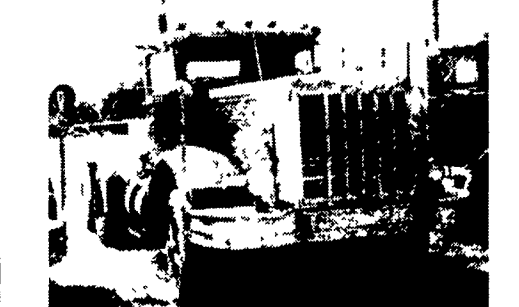


1988 Ford F350 XLT 4x4
 Auto Rebuilt 460, 7 1/2 Meyer Plow, Meyer Mini Salt Spreader, Insert East Dump, Extra Set of Tires & Wheels, Strong Work Truck \$10,000.00 - Will Separate
410-876-2566

'78 MACK "R" Model; 300, PS; 5 Spd. ~~\$13,500~~ **\$8,500**
 '78 MACK "R" Model; 300; PS; 6 Sp. A/C ~~\$14,900~~ **\$9,500**
 '79 KENWORTH 450 HP; Detroit 8V92; 15 sp; PS; AC; Wetline; Jake Brake ~~\$18,500~~ **\$12,900**



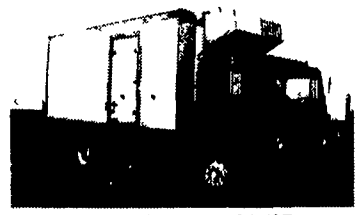
'77 INT-H 4200, 8V71T, 10 sp. RR, Wetline, Good Body, Good Truck ~~\$12,500~~ **\$8,900**
 '72 AUTOCAR 1693 CAT 425; 13 sp. Fuller; 38000 Rockwell 11.24.5 Radials; 84" CA; 156" W8; Neway Air Ride; Fontaine 5th Wheel, 750 Luberliner - Only Two Left ~~\$7,500~~ **\$4,900**
 '79 AUTOCAR 3406 CAT; 13 sp. Fuller; 38000 Rockwell 11.24.5 Radials, 84" CA; 156" W8; Neway Air Ride; Fontaine 5th Wheel; 750 Luberliner ~~\$12,500~~ **\$7,900**




'84 WHITE Expeditior NTC; 240 Cummins; RT 1110 Trans; 23 Rears; a/b; 22 ft. Fiberglass Box, Good Shape ~~\$7,900~~ **\$4,900**




'77 TRAILMOBILE Flat Bed Log Trlr ~~\$2,500~~ **\$1,000**
 MACK R-Model Fairings Tops & Sides ~~\$850~~ **\$200**
 '85 FORD F350, Diesel New Mini-Dump with Roll Up Tarp and Headboard, 4 Sp. ~~\$8,500~~ **\$7,500**
 '80 FORD L800 Rollback 24' JerrDan 5/2; 429 Real Good Condition, New Springs ~~\$12,500~~ **\$11,500**
CALL 1-800-783-7867
 ext. 15 for Nick or after 6 p.m. call **717-456-7497**
 Equipment located 40 miles North of Baltimore or 40 miles South of York, Pa. on the Md.-Pa Line



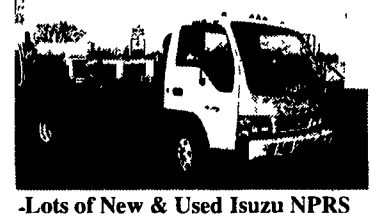
1992 MACK MS250P
 33,000 GVW, 18' Morgan Refrig. Van, TK MD II with Standby. low miles **ASK FOR KEITH**



1995.5 ISUZU NPR,
 14,250 GVW, stick, 16' Morgan Van, Super LOW Miles. Excellent Condition Call Keith



1985 MACK 'R' MODEL
 E6 350; 15-Speed Fuller, Good Condition -**CALL FOR DETAILS.**




-Lots of New & Used Isuzu NPRS Pick your specs. Call Keith and Ask About Our NEW REBATE PROGRAM

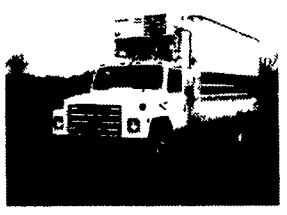
Large inventory of Iveco Parts in stock

READING MACK
610-929-9433
 4226 Pottsville Pike
 Reading, PA


Ask Keith how you can save on demos




2 - 1980's Ford LN 8000 20' Reefer
 Body Self Contained, 3208 CAT 210 HP, 5 Sp Trans, 2 Spd Rear, 33,000 GVW, Very Good Thru Out, Will Separate **\$12,500 Ea.**



1981 INT. S1800
 20' Reefer Body, Self Contained, 3208 Cat 210 HP, 5 Sp Trans, 2 Sp Rear, 33,700 GVW, Very Good Thru Out, Will Separate **\$12,500**



1985 FORD F-700
 12 Dump Construction Bed, 370 Gas, 5 Spd Trans, 2 Sp Rear, Hyd Brakes, 83,000 Miles, 24,700 GVW, Exc Cond **\$13,500**



1984 FORD LN8000
 C&C, 3208 Cat, 210 HP, 10 Spd Trans, 32,000 GVW, Exc Cond **\$14,500**

Al Hamilton Management Co.
 Used Medium & Heavy Duty Trucks
 P.O. Box 157 • 55 Doe Run Rd.
 Manheim, PA 17545
 Phone: 717-665-7145 Fax: 717-665-2137

AMERICAN SERVICE

700 North State Rd.
 Rts. 11 & 15
 Marysville, PA 17053
 717 957-2999
 1-800 654-4020
 1-800 507-4359
 Fax 717 957-2272

ENGINES

American Service Warranty, Corp. - Specializing in:
Extended Warranties For Used Cars & Engine Distribution!!

Remanufactured Engines:

- ★ Excellent Availability
- ★ Prompt Delivery
- ★ Most Engine Warranties - 36mo. Unlimited Mileage
- ★ Monthly Specials
- ★ Engines As Low As \$995.00
- ★ Warranties On Drop-In Diesels 2 yr./200,000 Mi.

Your Source For Remanufactured Engines!
Complete Line Of Domestic and Japanese Engines!
Now Available
 6.9 Drop-In Diesel \$4,695 And 7.3 Drop-In Diesel \$4,895
 Other Diesel Engines Available

"Your Satisfaction is Our Guarantee"

★★ DOMESTIC
 ★★ FOREIGN
 ★★ DIESELS

Ford/Navistar Drop In
 6.9 Liter \$4,695
 7.3 Liter \$4,895

Largest Stocking & Selling Extended Cab GMC Dealer in 7 States

PONTIAC • HONDA • GMC TRUCK
 1335 Manheim Pike, Lancaster
 Prices based on straight sale, tax & tags extra. Trades accepted at actual cash value. Must present this ad at time of purchase for sale price.

JONES
717-394-0711

| | | | | |
|--|--|--|--|---|
|  '94 TOYOTA 4x4 5spd, 4cyl, 43K Miles #7748 Was \$13,900 SALE \$10,880 |  '95 GMC K15 4x4 AT, AC, Vortec 4300, Clean #7705 Was \$16,800 SALE \$13,900 |  '97 GMC 14' CUBE VAN AT, AC, V8, 22K #7669 ONLY \$18,999 |  '88 Chev C15 AT, AC, 350, Silverado, 79K #7762 Was \$8,900 SALE \$6,950 |  '94 GMC K25 4x4 3/4, AT, AC, 350, SLE #7718, Was \$17,900 SALE \$14,400 |
|  '88 CHEV K15 4x4 350 Silverado, A/C, 5-Spd., 90K #7738 ONLY \$7,400 |  '96 PLYMOUTH VOYAGER AT, AC, V6, 7 Pass #7733 Was \$16,800 SALE \$14,300 |  '97 GMC YUKON 4x4 SLE, AT, AC, 350, 18,000 Miles #7735 Was \$30,700 SALE \$28,800 |  '95 GMC K15 XCAB 4x4 AT, AC, 350, Z71, SLE #7750 Was \$20,750 SALE \$19,100 |  '97 GMC K15 4x4 SLE, AT, AC, 350, Low Miles #7719 Was \$22,700 SALE \$20,760 |