

Central Carlot Beef Report

Wednesday, February 18, 1998
 USDA NATIONAL CARLOT BEEF REPORT (includes major production areas in the Midwest and TX) as of 3:00 PM COW & BULL CARCASS FOB OMAHA Loads Reported. Compared to Tuesday's 3:00 P.M. report: Cow and bull carcasses not established.

Lds Price Range Latest Estb. Mkt. UT,brk 2-4 450#/up 61.50 D UT,bng 1-3 400#/up 65.50 D Cutter 1-2 350#/up 66.00 C Bulls YG 1 500#/up

COW & BULL CARCASS CAF WEST COAST Loads Reported. Compared to last week: Market for Week Ended: February 12, 1998 Lds Price Range UT,brk 2-4 450#/up UT,bng 1-3 400#/up 63.00 Cutter 1-2 350#/up 63.00 Bulls YG 1 500#/up BONELESS PROCESSING BEEF/BEEF TRIMMINGS 114.0 Loads Reported. Lean boneless processing beef 3.00 higher; 75% and 65% steady. Demand light to moderate on light offerings. Beef trimmings weak on light to moderate demand and moderate to heavy offerings.

FOB OMAHA BASIS: Chm Ln Lds Price Range Wtavg 90% fr 12 103.0 - 105.5 104.63 90% fz unq 85% fr 92.0 - 94.0 93.00 A 85% fz unq 75% fr 4 69.0 - 71.0 70.00 75% fz unq 65% fr 4 53.0 53.00 65% fz unq 50% fr 58 28.00 - 29.50 28.98 50% fz 20 33.00 - 34.00 33.75 50% bx 2 31.00 31.00 Bull 92-94 unq

FOB EAST TEXAS AND OKLAHOMA: Chm Ln Lds Price Range Wtavg 90% fr 12 104.0 - 105.0 104.83 90% fz unq 85% fr unq 85% fz 75% fr 75% fz 65% fr 65% fz

CAF NORTHEAST AREAS: Chm Ln Lds Price Range Wtavg 90% fr 2 108.0 108.00 90% fz unq 85% fr unq 85% fz 75% fr 75% fz 65% fr 65% fz

CAF WEST COAST BASIS Market for

Week Ended: 2/13/98 Chm Ln Lds Price Range Wtavg 90% fr 89.00 - 96.00 93.23 90% fz unq 85% fr 85.00 - 90.00 87.50 85% fz unq 75% fr unq 75% fz unq 65% fr 53.00 - 55.00 53.80 65% fz unq 50% fr 29.50 - 31.50 30.48 50% fz unq

ABCDE after quotes represents days since last actual market test. Quotes are dropped after 5 days of no test or before if they no longer reflect current market conditions.

Lebanon Valley Livestock

Fredericksburg, PA
 Feb. 17

Report Supplied by Auction

STEERS: CHOICE 1280-1405 LBS. 63.00-64.75.

HOLSTEINS: CHOICE 1435-1515 LBS. 55.50-59.00, SELECT 50.25-55.75, STANDARD 1155-1670 LBS. 44.50-47.50.

HEIFERS: CHOICE 1175-1250 LBS. 60.25-61.50, SELECT 1480 LBS. 55.75.

COWS: BREAKING UTILITY AND COMMERCIAL 1300-1500 LBS. 39.00-42.00, CUTTER AND BONING UTILITY 1250-1400 LBS. 34.00-38.25; CANNER AND LOW CUTTER 1150-1350 LBS. 28.75-33.95; SHELLS 24.00-27.50.

BULLS: YG#1 2155 LBS. 50.00; YG#2 1075-2595 LBS. 36.25-40.00.

FEEDER CATTLE: 435 HEREFORD 67.50; 395-810 LBS. 39.00-54.50 HEAD.

CALVES: STANDARD AND GOOD 80-85 LBS. 20.00-38.00.

FARM CALVES: #1 HOLSTEIN BULLS 95-115 LBS. 100.00-124.00, #2 HOLSTEIN HEIFERS 90 LBS. 34.00-40.00.

BEEF X BULLS AND HEIFERS 105 LBS. 110.00.

HOGS: US#1-3 255-365 LBS. 30.25-35.00.

SOWS: US#1-3 480-565 LBS. 26.00-28.00; US#2-3 425-450 LBS. 23.00-25.00.

BOARS: 300-615 LBS. 15.50-17.00.

Grantsville Livestock

Grantsville, Maryland
 Report Supplied by Auction
 Sat., February 14, 1998

STOCK BULLS AND STEERS 200-500 LBS. 50.00-80.00.

STOCK HEIFERS 40.00-75.00. SLAUGHTER STEERS GOOD TO CHOICE, NONE AVAILABLE; MEDIUM TO GOOD 45.00-60.00.

HOLSTEIN STEERS GOOD, NONE AVAILABLE; LIGHT 35.00-49.75.

SLAUGHTER HEIFERS GOOD TO CHOICE, NONE AVAILABLE; MEDIUM TO GOOD 42.00-58.00.

BULLS: HEAVY 36.00-45.00, LIGHT 40.00-48.25.

COWS: UTILITY HOLSTEINS 33.00-41.75, CANNERS 28.00-32.00, CULLS 27.00 AND DOWN.

VEALS GOOD TO CHOICE UP TO 84.00, MEDIUM TO GOOD 35.00-55.00.

BOB CALVES: 30.00 AND DOWN. HOLSTEIN BULL CALVES RETURN TO FARM: 90-120 LBS. UP TO 92.00.

HOLSTEIN HEIFER CALVES RETURN TO FARM UP TO 90.00.

BEEF X CALVES RETURN TO FARM: UP TO 80.00.

HOGS: TOP QUALITY 33.00-41.00, HEAVY 33.00-40.00, LIGHT 32.00-38.00, FEEDER PIGS BY THE HEAD, UP TO 40.00.

SOWS: UP TO 38.00.

MALE HOGS: UP TO 22.00.

LAMBS: 70-85 LBS. UP TO 90.00; 85-125 LBS. UP TO 88.00; 30-60 LBS., UP TO 118.00; CULLS 75.00 AND DOWN.

SHEEP: UP TO 50.00.

GOATS: ALL BY THE HEAD, LARGE 50.00-85.00; MEDIUM 20.00-60.00; SMALL 11.00-30.00.

Morrison Cove Livestock

Martinsburg, Pa.
 February 16, 1998

Report supplied by auction

CATTLE 190. STEERS CHOICE 60.00-64.00; GOOD 56.00-60.00.

HEIFERS: CHOICE 60.00-63.00; GOOD 56.00-60.00.

COWS: UTILITY & COMMERCIAL 35.00-43.85; CANNER & LOW CUTTER 21.00-35.00.

BULLOCKS: 40.00-53.00.

BULLS: YIELD GRADE NO. 1 41.00-49.50.

FEEDER CATTLE: STEERS 52.00-69.00; BULLS 45.00-55.00; HEIFERS 40.00-65.00.

CALVES 127. PRIME, NO MKT. TEST; CHOICE 79.00-85.00; GOOD 65.00-75.00; STANDARD 15.00-32.00.

HOLSTEIN BULLS 90-130 LBS. 50.00-105.00; HOLSTEIN HEIFERS 90-130 LBS. 50.00-100.00.

HOGS: 226. US NO. 1-2 37.00-38.00; US NO. 1-3 35.00-36.00.

SOWS: US NO. 1-3 22.00-33.00.

BOARS: 15.50-26.50.

FEEDER PIGS: 41 HEAD. US#1&3 20-50 LBS. 12.00-39.00.

SHEEP: 27 HEAD. CHOICE LAMBS 85.00-95.00; GOOD LAMBS 80.00-85.00; SLAUGHTER EWES 40.00-52.00.

GOATS: 35.00-90.00 EACH.

Frederick Livestock Auction

Frederick, Md.
 February 16, 1998

Report Supplied by Auction

SLAUGHTER COWS: 89 HEAD, STEADY PRICES. UTILITY 35.00-40.00; HIGH DRESSING TO 41.50; CANNERS 30.00-35.00; SHELLY 29.00 DOWN.

BULLS: 8 HEAD, GOOD DEMAND! YG#1 1100-1950 LBS. 46.00-50.75; YG#2 42.00-46.00.

HEIFERS: FEW HOLSTEINS 42.00-46.00.

VEAL CALVES: 265 HEAD. 1 GOOD 325 LBS. AT 64.00; CULLS 85-110 LBS. 25.00-36.00; 60-85 LBS. 18.00-28.00.

FARM CALVES: STEADY PRICES. HOLSTEIN BULLS #1 95-120 LBS. 90.00-112.00; 85-95 LBS. 60.00-85.00; #2 35.00-55.00; HOLSTEIN HEIFERS FEW #1 90-120 LBS. 95.00-117.00; 80-90 LBS. 40.00-90.00; BEEF X BULLS 40.00-110.00; HEIFERS 36.00-110.00.

BUTCHER HOGS: 15 HEAD. 1 LOT 267 LBS. 36.50; 4 LOTS 290-320 LBS. 33.00-37.00.

SOWS: NONE.

BOARS: 375-450 LBS. 14.00-14.50. STOCK CATTLE: 30 HEAD, GOOD DEMAND.

STEERS: FEW OFFERED; COUPLE HEREFORD X 400-500 LBS. 64.00-71.00.

HEIFERS: 300-500 LBS. 60.00-70.00; 500-700 LBS. 54.00-64.00; 1 300 LB. HOLSTEIN AT 70.00.

BULLS: 400-650 LBS. 60.00-75.00; 700-800 LBS. 60.00-62.00.

LAMBS: WOOLED 85-100 LBS. 83.00-89.00.

GOATS: 1 MED. NANNY AT 57.00.

Frederick Livestock Auction

Frederick, Md.
 February 16, 1998

Report Supplied by Auction

SLAUGHTER COWS: 89 HEAD, STEADY PRICES. UTILITY 35.00-40.00; HIGH DRESSING TO 41.50; CANNERS 30.00-35.00; SHELLY 29.00 DOWN.

BULLS: 8 HEAD, GOOD DEMAND! YG#1 1100-1950 LBS. 46.00-50.75; YG#2 42.00-46.00.

HEIFERS: FEW HOLSTEINS 42.00-46.00.

VEAL CALVES: 265 HEAD. 1 GOOD 325 LBS. AT 64.00; CULLS 85-110 LBS. 25.00-36.00; 60-85 LBS. 18.00-28.00.

FARM CALVES: STEADY PRICES. HOLSTEIN BULLS #1 95-120 LBS. 90.00-112.00; 85-95 LBS. 60.00-85.00; #2 35.00-55.00; HOLSTEIN HEIFERS FEW #1 90-120 LBS. 95.00-117.00; 80-90 LBS. 40.00-90.00; BEEF X BULLS 40.00-110.00; HEIFERS 36.00-110.00.

BUTCHER HOGS: 15 HEAD. 1 LOT 267 LBS. 36.50; 4 LOTS 290-320 LBS. 33.00-37.00.

SOWS: NONE.

BOARS: 375-450 LBS. 14.00-14.50. STOCK CATTLE: 30 HEAD, GOOD DEMAND.

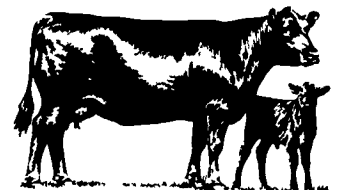
STEERS: FEW OFFERED; COUPLE HEREFORD X 400-500 LBS. 64.00-71.00.

HEIFERS: 300-500 LBS. 60.00-70.00; 500-700 LBS. 54.00-64.00; 1 300 LB. HOLSTEIN AT 70.00.

BULLS: 400-650 LBS. 60.00-75.00; 700-800 LBS. 60.00-62.00.

LAMBS: WOOLED 85-100 LBS. 83.00-89.00.

GOATS: 1 MED. NANNY AT 57.00.



It's been more than sixty years and we're still running circles around the competition.



Walker-Gordon Farms, 1,500 cows, 1929, Plainsboro, NJ

We've been designing and building our own rotary stall systems since 1929. Years of hands-on experience and dedication to quality are why our rotary stalls are the finest on the market. We offer durable, all-welded steel construction and steel rollers, plus our unique heavy-duty Turn-Styles™ design is built to stand up to years of use.

Flexible sizes (from 20 to 60 stalls) allow you to fit the system to your operation. Plus, the safe, smooth operation of our systems assures cow welfare and

milker comfort so you can milk more cows per hour while reducing labor costs.

If you're challenged with how to achieve higher milking performance, here's the solution—a high-quality, all-steel rotary stall system from Alfa Laval Agri™. Talk to your local independent Alfa Laval Agri dealer about the time-tested advantages of an Alfa Laval Agri rotary stall system.



The only Heavy-Duty Rotary Stall available in America

Alfa Laval Agri

11100 N. Congress Ave. Kansas City, Missouri 64153
 © 1997 Alfa Laval Agri

STEWART
Oster
Model 510 Clipmaster Animal Clipper 3000
 cutting cycles per minute.

Used for clipping horses, dairy cattle, beef cattle and large dogs. Electric.
 List \$169.75
Sale Price \$161.25

SALES AND SERVICE
Pequea Battery Co.
 103-A North Ronks Rd., Ronks, PA 17572
717-687-0880