

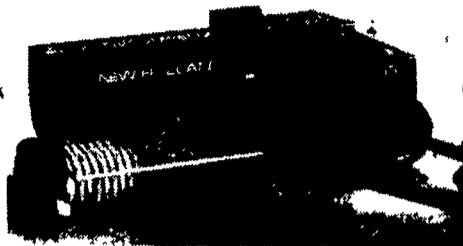
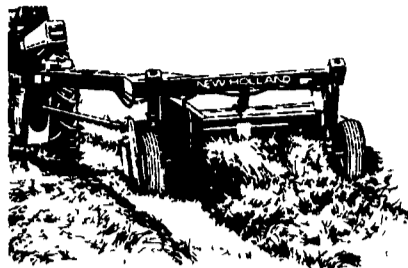
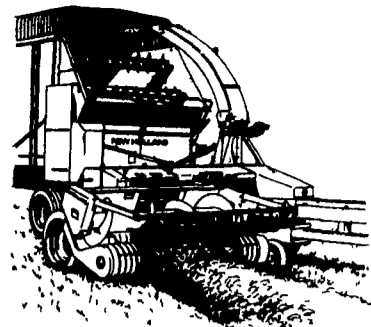
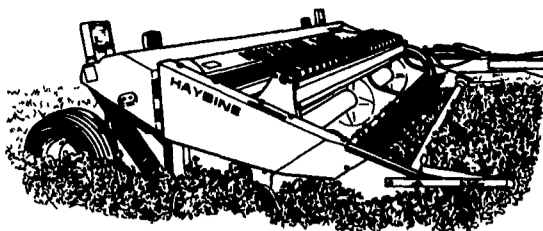
0

%

**NO INTEREST
NO PAYMENTS**

36 MONTHS

On Selected New Holland Hay And Forage Equipment



**ALL NEW
FOR 1998**



**ONE SPREADER DOES IT ALL
PEN PACK OR SLURRY**

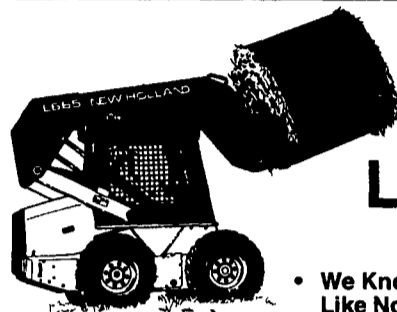
- NH 3102 - 1005 Gals.
- NH 3110 - 1818 Gals.
- NH 3106 - 1375 Gals.
- NH 3114 - 2476 Gals.
- NH 3118 - 3188 Gals.



Reminder!
We Still Offer:

**EMERGENCY
AFTER HOURS
PARTS SERVICE CALL:**

- Lynn Strickler... 653-5166
- Terry McGarvey... 361-7585
- Ed Prosser... 367-2368
- Jim Sensenich... 653-5723



WHEN IT COMES TO
**SKID
LOADERS**



• We Know Skid Loaders,
Like No One Else!

- The Best Parts & Service People
To Keep You Going...Going...
- Rental Units Available



NEW HOLLAND
Credit Company

MESSICK'S
SERVING TWO LOCATIONS



Rheems Exit - Route 283
Elizabethtown, PA 17022
717-367-1319 717-653-8867

RD 1, Box 225A, Abbottstown, PA 17301
West of York, PA On Route 30
717-259-6617

Best Buys in Used Equipment

- TRACTORS**
- IH 656 Utility Tractor (A)
 - IH 240 Wide Front w/3 Pt Hitch
 - IH 3088 - Nice!
 - IH 1088 Tractor w/Cab
 - Case IH 885 4x4 w/2255 Loader
 - Case IH 7210, 4x4, 850 Hrs
 - Case IH 5220, 2WD, Cab, 50 Hrs., Power Shift
 - Case IH 7120 4WD ROPS
 - Case IH 5250, 115 HP, 2WD w/Cab
 - Case IH 585 w/Canopy, Shutter Shift, 33 Hrs
 - Ford 9700 (A)
 - Ford 7000
 - Ford TW35, 4WD (A)
 - Ford 2000 Turf Tractor (A)
 - Ford 800, 3 Pt., Excellent (A)
 - Ford 3000 w/New Tires (A)
 - Ford 3400 w/Loader (A)
 - JD 2010 Wide Front (A)
 - AC 180 Tractor (A)
 - MF 240 - 42 HP, 825 Hrs., Like New
 - MF 30 (A)

- COMPACT TRACTORS**
- Case IH 235, 4WD
 - Ford 1520 4x4 w/Loader
 - Ford 1100 4x4 w/Belly Mower (A)
 - Kubota 97100, 80 Hrs w/New 80" Mower, 4WD, Hydro
 - Kubota B7200 w/Mower (A)
 - Kubota L2050 w/Mower & Front Blade
 - Kubota B6100 4x4 w/Loader

- PLANTING & TILLAGE**
- Brillion 12' Packer
 - Brillion 11' Cultipacker
 - Case IH 900, 8 Row, Dry Fert, Insecticide Hopper, No-III; Ex:1
 - Case IH 3900 Disc Harrow 22' Rock Flex w/3 Bar Leveling Rake, Like New
 - IH 720, 4 Bottom, 18" Plow w/Auto Reset
 - IH 400 Planter, 4 Row Narrow
 - IH 140, 3 Bottom Roll Over Plow
 - IH 370 12' Disc Harrow
 - IH 800 4RN Planter w/Dry Fertilizer, Nice
 - JD 7240 11 Row Soybean & Corn Planter
 - JD 10' Cultipacker
 - Krause 14' Disc

- BREADERS**
- Case IH 585 Spreader
 - NH 12A Spreader
 - NH 480 Hyd. End Gate, Top Beater
 - NH 213 Spreader w/Top Beater
 - NH 514 Spreader w/End Gate
 - NH 518, Nice (A)
 - NH 510 Spreader w/Endgate
 - NH 308 Spreader - Like New (A)
 - 800 Gal. Vacuum Manure Tank

- CONSTRUCTION & INDUSTRIAL EQUIP.**
- 11MD Bradco Backhoe
 - Ford 350 Ind. Tractor Loader
 - Ford 555A Tractor, Loader, Backhoe
 - Ford 335 Tractor Loader (A)
 - Komatsu Excavator (A)

- S.P. EQUIPMENT**
- John Deere 5830, 4x4 w/Crop Processor & Pickup (A)
 - FX 45 Demo Unit - SAVE \$\$\$
 - FX 25 - 4 Row Corn Head, Pickup, 750 Hrs, Like New
 - JD 6810 Harvester w/6R Kemper Head & Pickup

- HAY & FORAGE**
- Badger Forage Wagon (A)
 - 2 - NH 8 Forage Box Wagons
 - Case IH 6440 Round Baler, Exc
 - Deutz Fahr 8' PTO Rotary Rake
 - Deutz Fahr 4 Spinner Tedder
 - Ford 532 Baler
 - Hesston 1280 Forage Harvester, 3 Row Corn Head & Pickup
 - Hesston 530 Round Baler, Excellent
 - JD 1480 Disc Bline
 - IH 35 Rake w/Dolly Wheels
 - JD 672 Rake w/Dolly Wheels
 - NH 258 Rake (A)
 - NH 411 Discbine
 - NH 830 Round Baler, 4x4
 - NH 640 Round Baler

- NH 163 Hay Tedder
- NH 418 12' Disc Bline
- NH 853 Round Baler
- NH 575 Baler w/72 Thrower
- NH 565 Sq Baler
- NH 855 Round Baler (A)
- NH 326 Baler w/Thrower
- NH 469 Haybine
- NH 488 Haybine
- NH 492 Haybine
- NH 488 Haybine
- NH 498 Haybine (A)
- NH SP 1468 Haybine, 9 Ft
- NH 1499 Haybine (A)
- NH 892 Harvester 824 Corn Head, Good Cond.
- NH 782 Forage Harvester
- NH 218 Hyd-Fold Rake, Up to 27'
- NH 315 w/Thrower
- NH 320 Baler w/Thrower
- NH 144 Invtor

- SKID LOADERS**
- Bobcat 642 w/Bucket - Like New!
 - Case 1835C w/Back Hoe
 - Case 1845B Skid Loader - Diesel
 - Case 1845 C w/Bucket-Nice!
 - Gehl 450 Skid Loader w/Bucket
 - NH LX 885 Less than 500 Hrs (A)
 - NH L583 Skid Loader w/Bucket
 - NH 553 Skid Loader (A)

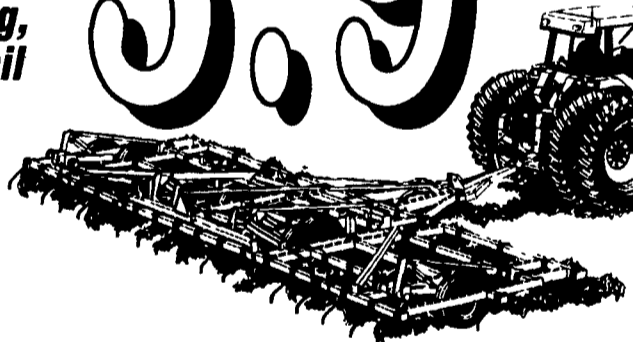
- USED LAWN & GARDEN**
- Cub Cadet 1641, 46" Deck, Like New, Only 69 Hrs.
 - Cub Cadet 2284, 48" Deck
 - Cub Cadet 1884 w/48" Deck
 - Kubota G1900 4W/Steer, 48" Mower
 - Steiner 420 w/Onan Gas, 20 HP, 840 Hrs
 - Steiner 420 w/22HP Kohler, 250 Hrs.

- MISC.**
- 1000 Gal. John Blue Sprayer, 45' Boom
 - Richardson Dump Wagon
 - South East 14' Skid Loader Trailer
 - Laley 4 Ton Spinder Fert. Spreader, Tandem Axle
 - Grain-O-Vator Cart - 80 Bu
 - Woods FM72 Flail Finishing Mower
 - Large Bale Grapple Hook
 - Woods 20' Batwing Mower (A)
 - Hard 1200C Trailer, 8 HP Fert. Spreader
 - C8 Transplanter

Case IH is offering low **3.9% financing** for 36 months on Case IH planting, seeding and soil preparation equipment.

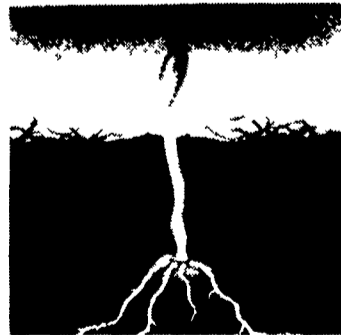
3.9%

This special offer is good on Case IH Early Riser planters, grain drills, disk harrows, field cultivators and more.



Case IH 4300 Field Cultivator

Tillage Practices Change. A Seed's Requirements Do Not.



An Early Riser Planter Is "The Germinator"

Remember What's most important is the combination of planting to moisture, uniform depth control, seed-to-soil contact, uniform soil pressure, accurate population and seed spacing. Early Riser planter makes a difference. That means a one- to seven-day faster emergence, a 7 bu. per acre average yield advantage in corn. That is real value.

In Stock - Case IH 950 Planter w/No Till Liquid or Dry w/Insecticide

MESSICK FARM EQUIPMENT, INC.

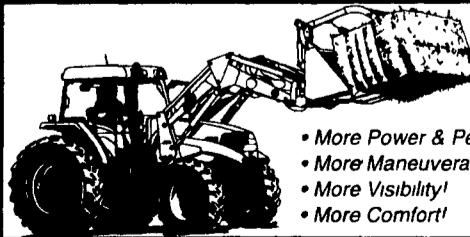
Rheems Exit - Rt. 283, Elizabethtown, PA

717-367-1319, 717-653-8867

©1998 CASE CORPORATION
Visit us on the Internet at <http://www.casecorp.com>
Case IH is a registered trademark of Case Corporation



CONSIGNMENT AUCTION Of Farm Equipment Saturday, March 28



**MAXXUM® TRACTOR
MX 135 - 115 HP
w/LOADER
IN STOCK**

- More Power & Performance!
- More Maneuverability!
- More Visibility!
- More Comfort!

ATTENTION FARMERS: If parts are needed after hours to keep you going, call Lynn at home (717) 653-5166 or Terry at (717) 361-7585

MESSICK FARM EQUIPMENT, INC.

Rheems Exit - Rt. 283, Elizabethtown, PA

717-367-1319, 717-653-8867

©1998 CASE CORPORATION
Visit us on the Internet at <http://www.casecorp.com>
Case IH is a registered trademark of Case Corporation

