

Public Auction Register

Closing Date Monday 5:00 P.M.
of each week's publication

PUBLIC SALE
Electrical Contractor
Equipment & Supplies
1984 Ford 1/2 Ton Van
Loads of Small Items
TUES., FEB. 17, 1998
9:00 A.M.

Located at 1340 North Tenth Street, Reading, Berks Co., PA.

GREENLEE TOOLS

inc. #640 Power Cable Puller, #777 & #880 Benders, #7306 Knockout Punch, #766 Cable Puller, #689 Storage Box, #755 Hand Pump, (2) #710 Stud Punches, #512 Vermette 500 Lb. Lift, Tristand Rigid Pipe Mills, Greenlee Repair Parts, (2) 8 Ft. Fiberglass Ladders, 14 Ft. Wooden Ladder, Honda Portable Generator, Metal & Aluminum Scaffolding, Vacuum Pump, Pipe Wrenches, Electric Hand Tools, Extension Cords, Pipe Stand Supports, Pipe Cutters, Hand Threaders, Lot Heavy Duty Metal Shelving and other good tools used in electrical business.

LOT OF NEW ITEMS

inc. (7) Crescent 24BM440A12ESB Fixtures, Rigid Conduit, Emt. Conduit, Explosion Proof Fittings & Starters, Fixtures, Transformers, Electric Heaters, Pipe Benders, Air Conditioner Parts, Wire, Bulbs, Electrical Fittings, 1 and 3 Phase Breakers, loads of other new electrical supplies.

Terms by

RICHARD L. HAFER
HAFER ELECTRIC

DALE L. PUTT, Auctioneer
AU-000733-L
Phone Akron (717) 859-1430

WED AUG 5 - 10AM Wolgemuth Auction, 109 N. Maple Ave., Leola, Lanc Co., PA Wolgemuth Hay Sale Dennis Wolgemuth, Auct

WED AUG 5 - 6:30PM 100 W Jackson St, New Holland, Lanc Co., Pa Winross, Hess, farm & toys A&C Diffebach Auction Inc

SAT. AUG 8 - Lebanon Valley Lst Mkt, 1 mi E of Fredericksburg, PA along Rt 22 Work, driving & riding horse sale Consign welcome, 717-866-5783 Keith Byers & Gerald Hoover, Aucts

MON AUG 10 - 10AM 100 W Jackson St, New Holland, Lanc Co., Pa. Hay, grain & straw auction A & C Diffebach Auction, Inc.

WED AUG 12 - 10AM Wolgemuth Auction, 109 N Maple Ave, Leola, Lanc Co., PA Wolgemuth Hay Sale Dennis Wolgemuth, Auct

FRI, AUG 14 - 9AM 100W Jackson St, New Holland, Lanc Co., Pa Tractors, farm equip, & supplies A&C Diffebach Auction Inc

FRI AUG 14 - 1:30PM 548 Alexander Spring Rd., Carlisle, PA State graded feeder pig sale Carlisle Livestock Market, Inc., 717-249-4511

FRI AUG 14 - 7 PM Middleburg Livestock Auct Sis, Inc Middleburg, PA Dairy Sale Clarence Shirk & John Shirk, Owners 717-837-2222

SAT AUG 15 - 10AM New Holland Sales Stables, Inc, 101 W Fulton St, New Holland, Lanc Co., PA Horse Sale 717-354-4341

MON. AUG 17 - 10AM 100 W Jackson St, New Holland, Lanc Co., Pa Hay, grain & straw auction A & C Diffebach Auction, Inc

TUES AUG 18 - 548 Alexander Spring Rd., Carlisle, PA Fed Cattle Sale Carlisle Livestock Market, Inc., 717-249-4511

TUES AUG 18 - 7:30PM 548 Alexander Spring Rd., Carlisle, PA Feeder cattle sale Carlisle Livestock Market, Inc., 717-249-4511

WED AUG 19 - 10AM Wolgemuth Auction 109 N Maple Ave., Leola, Lanc Co., PA Wolgemuth Hay Sale Dennis Wolgemuth, Auct

WED AUG 19 & THURS AUG 20 - 8:30AM 5174 Horst Rd, Chambersburg, PA Lawn & garden, misc (Wed), farm machin-

ery & tractors (Thurs) Marion Auction Service, 717-375-4700

FRI AUG 21 - 7PM Middleburg Lst Auct Sis Inc, Middleburg, PA Feeder Sale Clarence Shirk & John Shirk, Owners, 717-837-2222

SAT AUG 22 - Mel's Stables, 834 Wallace Rd., New Holland, Lanc Co., PA Horse Sale Mel Hoover, Auct 717-354-8397

MON AUG 24 - 10AM 100 W Jackson St New Holland, Lanc Co., Pa Hay, grain & straw auction A & C Diffebach Auction, Inc

WED AUG 26 - 109 N Maple Ave, Leola, Lanc Co., PA Farm Equipment Auction Wolgemuth Auction, 717-656-2947

WED AUG 26 - 10AM Wolgemuth Auction, 109 N Maple Ave., Leola, Lanc Co., PA Wolgemuth Hay Sale Dennis Wolgemuth, Auct

FRI AUG 28 - 1:30PM 548 Alexander Spring Rd., Carlisle, PA State graded feeder pig sale Carlisle Livestock Market, Inc., 717-249-4511

SAT AUG 29 - 8:30AM - Tack 11AM Horse Sale Middleburg Lst Auct Sis Inc, Middleburg, PA Clarence Shirk & John Shirk, Owners 717-837-2222

MON AUG 31 - 10AM 100 W Jackson St, New Holland, Lanc

Co., Pa Hay, grain & straw auction A & C Diffebach Auction, Inc

SEPTEMBER

TUES SEPT 1 - 548 Alexander Spring Rd., Carlisle, PA Fed Cattle Sale Carlisle Livestock Market, Inc., 717-249-4511

WED SEPT 2 - 109 N Maple Ave, Leola, Lanc Co., PA Lumber & Building Materials Sale Wolgemuth Auction, 717-656-2947

WED SEPT 2 - 10AM Wolgemuth Auction, 109 N Maple Ave., Leola, Lanc Co., PA Wolgemuth Hay Sale Dennis Wolgemuth, Auct

WED SEPT 2 - 6:30PM 100 W Jackson St, New Holland, Lanc Co., Pa Winross, Hess, farm & toys A&C Diffebach Auction Inc

FRI SEPT 4 - 9AM Belleville Livestock Market, Belleville, PA Fall Machinery Sale 1PM Tractors & Hay For more info Gene Glick, 717-667-2703 or Sale Barn, 717-935-2146

SAT SEPT 5 - Mel's Stables, 834 Wallace Rd., New Holland, Lanc Co., PA Horse Sale Mel Hoover, Auct 717-354-8397

MON SEPT 7 - 10AM 100 W Jackson St, New Holland, Lanc Co., Pa Hay, grain & straw auction A & C Diffebach Auction, Inc

WED SEPT 9 - 10AM Wolgemuth Auction, 109 N Maple Ave., Leola, Lanc Co., PA Wolgemuth Hay Sale Dennis Wolgemuth, Auct

FRI SEPT 11 - 9AM 100 W Jackson St, New Holland, Lanc Co., Pa Tractors, farm equip, & supplies A&C Diffebach Auction Inc

FRI SEPT 11 1:30PM 548 Alexander Spring Rd., Carlisle, PA State graded feeder pig sale Carlisle Livestock Market Inc 717-249 4511

FRI SEPT 11 - 7PM Middleburg Livestock Auct Sis, Inc Middleburg, PA Dairy Sale Clarence Shirk & John Shirk Owners 717-837-2222

SAT SEPT 12 - Lebanon Valley Lst Mkt, 1 mi E of Fredericksburg, PA along Rt 22 Work, driving & riding horse sale Consign welcome, 717-866-5783 Keith Byers & Gerald Hoover, Aucts

SAT SEPT 12 - 10AM New Holland Sales Stables Inc 101 W Fulton St New Holland, Lanc Co., PA Dairy Heifer Sale 717-354-4341

MON SEPT 14 10AM 100 W Jackson St, New Holland, Lanc Co Pa Hay grain & straw auction A & C Diffebach Auction Inc

TUES SEPT 15 - 7:30PM 548 Alexander Spring Rd Carlisle, PA Feeder cattle sale Carlisle Livestock Market Inc 717 249-4511

REMINDER!!
MONTHLY TWO DAY SALE OF FARM EQUIPMENT

at our place of business located 6 miles south of Chambersburg, PA, 1 mi. E. of Marion, just E. off I-81 at Marion (Exit 4) along Rt. 914

Wed., February 18, 1998 - 8:30 A.M.

Lawn & Garden Tractors, misc. items

Thurs., February 19, 1998 - 8:30 A.M.

Misc. Items, Tires, Posts, etc.

10:00 A.M. - Farm Equipment and Tractors Selling for F.S.A. at app. 1:00 P.M.

2 - Case IH 585 Orchard Special, JD 2030 w/Front Forks, MF 135 Orchard w/Front Forks, DB 995, CAT 941-B High Lift, Vermeer M-450 Ditch Witch w/Hoe, JD Offset Disc, Diesel Orchard Sprayer, Gas Orchard Sprayer, Tree Planter, Vicon Seeder, 3-Front Fork Masts, Various Fork Att., 2-Plastic Layers, 3-Woods Mowers, 2-Bin Trailers, Irg Pipe, 3 Axle Gooseneck Trailer, 2- B-61 Macks (rough), And Other Orchard Related Items

New 3 pt. equipment sold daily.

We accept consignments daily.

M - F 8 - 5 Sat. 8 - 1 Closed Sunday
Next Sale - March 18, 19 Closed April 10

Marion Auction Service

Jerrold L. Jr. & Gloria Oaks

5174 Horst Rd., Chambersburg, PA

717-375-4700 Lic. #AH-89-L

Public Auction
Gordonville Fire Co.
ANNUAL SPRING AUCTION
Quilts, Antiques, Household Goods,
Buggies & Farm Equipment
Sat., March 14, 1998 • 8:30 AM

Loc. 10 miles east of Lancaster Rt. 30 turn North at Corestates Bank Paradise 1 mile to Gordonville Fire Hall.

Quilts & Quilt Tops only (no crafts) will be consigned at the Gordonville Bookstore, 275 Old Leacock Rd., Gordonville, PA. starting Monday, Feb. 2 thru Feb 19, 8:00 am to 4 00 pm, Monday thru Sat. All other items including crafts will be consigned at the Fire Hall March 9 thru March 13. No consignments will be accepted on Sale Day. For more information, call 717-768-3869 No Guns.

Terms By

Gordonville Sales Committee

Ron Funk & Local Auct

AU-314L

PUBLIC AUCTION

Monday, February 23, 1998

70 Head Herd Dispersal,

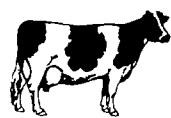
Draft Horses, Crops, Farm Equipment



9:00 A.M.

9:00 A.M.

Directions: From Gap take 41 South to 10 South, approx. 8 miles to Church Rd. turn right to 1st road right, Scroggy Road go over Route 1 Bridge to 1st road right Osborne Road to sale. From Strasburg take 896 South to Noble Rd. turn right to 1st road left, Bell Road go straight on Scroggy Road to Osborne Road turn left to sale.



12:00 Noon

70 Hd. Herd Dispersal 70 Hd.

42 Cows - 25 Heifers - 2 Bulls

7 Fresh in last 60 days

5 Fresh in Nov.

5 Due in March

21 Head in 1st and 2nd Lactation, 8 Head Breeding Age or Bred

15 Yearlings to Calves - 2 Breeding age Bulls

4 Compartment Calf Hutch with Feed Entry

Milking Equipment

3 Cylinder Lister Diesel, Masport M-3 Vacuum Pump, Cooling Compressor, Air Compressor, 275 Gal. Fuel Tank, Stainless Steel Twin Tubs, Gas Hot Water Heater, 600 Gal. Surge Milk Tank, Sputnick, 4 DeLaval Milkers with 70 lb and 80 lb Buckets, Drying Rack



7 Hd. Draft Horses 7 Hd.

4 Geldings, 3 Mares,

2 Registered Belgian Mares

These horses are broke to all farm machinery and ready for work

Horse Related Items

8 Sets Front Gears, 8 Bridles, 12 Collars, Jockey Stick, Check Lines, Backers,

1, 2, 3, 4, 5 & 6 Horse Hitches.

Crops

Around 25 Bales - Plastic Wrapped 4th Cutting Haylage, Approx. 150 Ton Corn

Silage, 7 Ton Mixed Grass Hay, Approx. 40 Ton High Moisture Corn, 50 Ft. Baled Haylage in Agbag

Farm Equipment

Case 600 Diesel Tractor on Steel with Pulley (Just overhauled), I & J One Row Tandem Axle Corn Binder with Aluminum Loader and Hydraulic with Honda Engine - harvested less than 50 acres, New Holland 565 Baler with 2 Cylinder Wisconsin Engine and Gandy Applicator (like new), New Holland 401 Crimper with 2 Cylinder Wisconsin Engine, Nicholson Hay Tedder, New Holland 55 Rake, New Holland 56 Rake, 2 - 16 ft. Flatbed Wagons with Corn Sides and Corn Chutes, 16 in. Denlinger Cutter with Pulley, McCormick Deering No. 9 Regular Gear Ground Driven Mower, 2 - 1 Row McCormick Deering Cultivators, 2 Row McCormick Deering Corn Planter, 1 Bottom 16 in. McCormick Deering 2 Way Plow, Oliver 2 Bottom 14 in. Trailer Plow, New Idea 1 Row Transplanter, Clark Field Sprayer with 300 Gal. Tank and 28 ft. Booms and Pump, New Idea 7 ft. Cuditioner - good condition, 2 - Auto Turn Fore carts, 12A New Idea Manure Spreader, 3 Section Spring Tooth Harrow, 9 ft. Brillion Cultipacker, 20 KBA Disc, 675 E.L.S. Liquid Manure Spreader, 8 ft. E.L.S. Pit Pump, Chrysler 6 Cylinder Engine with Clutch and Hydraulics, 1 Horse Gutter Cleaner, 2 Row McCormick Deering Corn Planter for Parts.

Misc. Items

2 - 10 ft. Hay Racks on skids, 2 - 3 1/2 Ton Wooden Feed Bins, 3 Minnich Tobacco Presses, 8000 Tobacco Lath, 10 Lath Holder, Tobacco Shears and Spears, 4 ft. Portable Barn Fan, 2 Silage Carts, 2 Grain Carts, Barn Dry, Shovels, Brooms, Forks, Silage Forks, not many small items.

Sale due to lack of health.

Terms by

Jonas F. & Fannie E. Stoltzfus
1300 Osborne Rd., Oxford, Pa. 19363

Cash or Honorable Pa. Check Only
All Announcements Sale Day Take Precedence Over All Advertising
Not Responsible for Accidents
Food on Premises

Auctioneer: Mel Hoover AU-003111-L
717-354-8397 Home or 717-354-6431 Barn



PUBLIC SALE

SAT., FEB. 21, 1998 at 10:00 A.M.

LOCATED AT 538 Bullshead Rd., Newville, PA From Newville, follow Rt 533 West approx 4 miles to Bullshead Rd, turn left From Shippensburg, follow Rt 533 East approx 6 miles to Bullshead Rd, turn right Sale signs will be posted at Bullshead Rd Sale Day

TRACTORS & SKID LOADER

Massey Ferguson 1085 diesel, factory cab, good tires, dual hyd., power steering, Massey Ferguson 1085 diesel tractor, dual hyd & power steering Long 510 diesel, 4 wheel drive, power steering, good tires, heavy duty loader with 2 buckets, Gehl 4510 gas skid loader, good cond.

COMBINE

New Holland T R 70 with Cat 3208 diesel engine, 4 row narrow corn head (good cond.)

TRUCKS

1976 Ford 900, with Cat 1150 diesel engine with fertilizer spreader box, 1971 Kenworth, with Detroit diesel engine, dump bed. 1986 Isuzu, pick up, diesel engine 79,865 miles, 4x4

HAY EQUIPMENT

New Holland 852 round baler (auto wrap), New Holland 477 Haybine 7 ft. cut, 3 pt hitch wheel rake (4 wheels), 2 round bale carriers, 3 pt hitch, round bale feeder.

FARM EQUIPMENT

J D 11 ft transport disc (22 in disc), J D 11 ft transport spring tooth Harrow, Int Chisel plow 3 pt 7 tooth; Oliver 546 4 bottom auto reset plow, Brillion 12 ft cultipacker; Brady 1440 stalk shredder, 12 ft 1000 R P M., Central tractor 300 gal field sprayer, pull type, Badger 160 manure spreader, 2 beater, Gravity bin wagon, (heavy duty wagon), Hutchinson 52" by 6" PTO grain auger (transport), White 543 4 row narrow no till corn planter, Huskee Model 6 flat bed wagon, Baltic 3 pt fertilizer spreader, Oliver #5 1 row cornpicker, Smidley self feeding range feeder, 3 pt hitch, post driver; 2 row 3 pt. cultivators, Rotary cutter 6 ft cut 3 pt. 40 ft extension ladder (aluminum), 2 Wisconsin engines, air compressor, 3 pt. wood splitter 20' hyd cylinder, Honda 3 wheeler, 150 & 250 gal fuel tanks with pumps, 5 hp. electric motor; (15 K.W. PTO GENERATOR WITH 200 AMP ELECTRIC WELDER; ACETYLENE WELDING SET, 2 TANKS & CART), N.H. 352 Grinder-Mixer

SALE BY:

STEPHEN S. SMITH

R-3, Box 526

MANCHESTER, KENTUCKY 40962

PHONE: 1-606-599-9318

TERMS: Cash or good check, sale day

I.D REQUIRED FOR BIDDER NO

Not Responsible For Accidents

Auct. Foreman AU1163L

Clerks; Foremans'

SALE INFO: RICHARD SMITH (717)-776-3984

Auct. Note: Steve & his family have taken up residence in Kentucky All equipment is in good cond. & very clean Not a lot of small items to sell Please be Prompt, approx a 2 hr. Sale

Sale site is at RICHARD SMITH property, on Bullshead Road.