



Apple Industry Rewards Retailers

HARRISBURG (Dauphin Co.)
— Produce manager's displays have been selected as the top fall apple displays in the 1997 Pennsylvania Apples retail display contest held in celebration of National Apple Month. Fourteen managers vied for \$2,600 in cash prizes. Each first-place winner receives \$500 in prize money for his/her creative efforts.

The winning displays were selected from entries submitted from more than 14 supermarket chains and wholesalers based in Pennsylvania and New York. These retailers represent more than 1,400 supermarkets in the mid-Atlantic Region. Produce managers built creative displays in their stores that featured Pennsylvania's Eastern Select apples and apple products.

geographic location of the supermarket. First-place winners included: in the Eastern Region: Giant Food Store #59, Mechanicsburg; Western Region: Kittanning Foodland, Kittanning.

"This annual contest boosts sales, builds enthusiasm, and provides a partnership between the apple industry and retail produce managers," said Brenda Beleski Briggs, director of the Pennsylvania Apple Marketing Program. "The 1997 entries showed that the produce managers put a tremendous amount of effort into building impressive and effective displays. Winning produce managers reported that sales of fresh apples increased by as much as 17 percent."

Judging criteria focus heavily on volume and variety of fresh apples displayed; all first-place winners displayed a minimum of six varieties of apples. Winning displays also earned points for creativity, shopability, and cross merchandising.

Contest entries were judged by

Berks Society 7

Berks County Society of Farm Women Group held their Christmas Party on December 6 at the Pleasantville Hotel. Nine members and their guests enjoyed the meal, gift exchanges, and singing Christmas carols. County President, Ruth Walters was present to install the new officers. They are as follows: president, Karen Hoffman; vice president, Naomi Mest; recording secretary, Dorothy Wagner; corresponding secretary, Joyce Mast; and treasurer, Barbara Kelchner.

Members visited honorary member Ruth Merbein in Manor

Care Nursing Home in December.

The January meeting was a luncheon in the home of Iona Houp. The by-laws were read by President Karen Hoffman. Janet Schlegel, Naomi Mest and Pearl Hoffman attended the State Convention on January 12th.

The books were audited by Dorothy Wagner and Iona Houp and were found to be correct. A donation was given to project graduation O.U.M.S. Bash.

The February meeting will be a luncheon at Shanesville Hotel.

York Society 26

President Athena Beshore was hostess to York County Farm Women #26 at her home in January.

14 members attended this meeting and Janet Lahr was a visitor.

A report was given on the Christmas banquet that was held at Normandie Ridge at York.

The by-laws were read by the group and reports on the State Convention were given by the delegates attending the convention.

Birthdays for the month of January were Mary Conley and Luna Kohler.

Food Safety Workshop

LANCASTER (Lancaster Co.)
— Volunteers at banquets, community festivals or church suppers often just rely on the cooking skills they use at home to prepare food for several hundred people. Professional chefs know the se-

crets for safely cooking foods in large quantities. Now non-professionals can know them too.

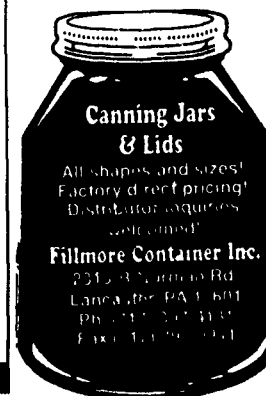
A Penn State workshop for occasional quantity cooks, the people who occasionally volunteer at events where food is cooked or

served to a crowd, is available for your organization. Nancy Wiker, extension agent with Penn State Cooperative Extension and certified master food handler, will train your group of 10 or more in safe food handling techniques.

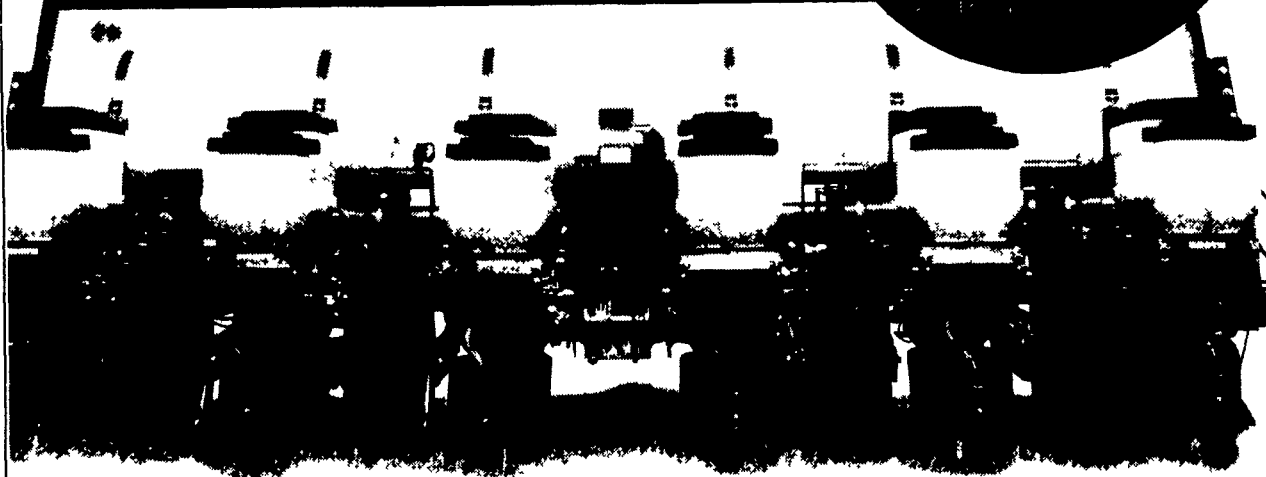
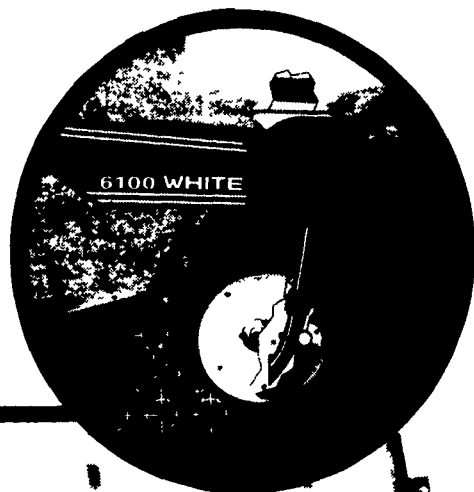
Foodborne illness strikes Americans more than 12 million times each year. More than three quarters of the outbreaks are blamed on food eaten outside the home. While such illnesses can be as mild as a stomachache, it can be more serious and sometimes fatal. Children and the elderly are among those who are most at risk.

Penn State encourages persons with disabilities to participate in its programs and activities. If you anticipate needing any type of accommodation or have questions about the physical access provided, please contact our office (717-394-6851) in advance of your participation or visit.

The next scheduled workshop at the Farm and Home Center is on Tuesday, February 17, from 6-9 p.m. The cost is \$5 per person. Additional workshops may be requested for a group of 10 or more at your site. Call Nancy Wiker, Penn State Cooperative Extension at (717) 394-6851 for information.



On The Mark, Get Set, Grow!



The 6100 Series Rigid And Vertical Fold Planters.

Precision farming starts with precision seed placement. And that's exactly what you'll get with the White 6100 Series planters. Our pull-type planters feature an exclusive air-metering system that's designed to singulate every seed. Its low air pressure, edge-drop seed discs and short, 18" seed drop ensure precise seed placement for maximum germination.

Adaptable To Any Tillage Situation.

Our 4, 6, 8 and 12 row planters have the flexibility to meet most tillage

practices both now and in the future. They're built rugged with a massive 7" x 7" frame and strong, welded-tongue design to handle the demands of heavy residue. Add a 6900 splitter attachment for interplant capability.

This season get the planter that places each seed where it'll grow the best — and perform the best. Stop by your AGCO® White Planter dealer today.



See Your AGCO White Dealer Listed Below.

Delaware

Georgetown
Baxter Farms

Maryland

Dayton
J.D. Mullinix

Lineboro
Wertz Farm Equipment

Pennsylvania

Bechtelsville
Miller Equipment

Bethel
Zimmerman's Farm Service

Bloomsburg
William F. Welliver

Carlisle
Carlisle Farm Service

Elizabethtown
Hernley's Farm Equip., Inc.

Greencastle
Meyers Implements

Klingerstown
Stanley's Farm Service

Lebanon
Umbergers of Fontana

Mifflinburg
B, S&B Repair

Oakland Mills
Peoples Sales & Service

Somerset
Lincoln Supply